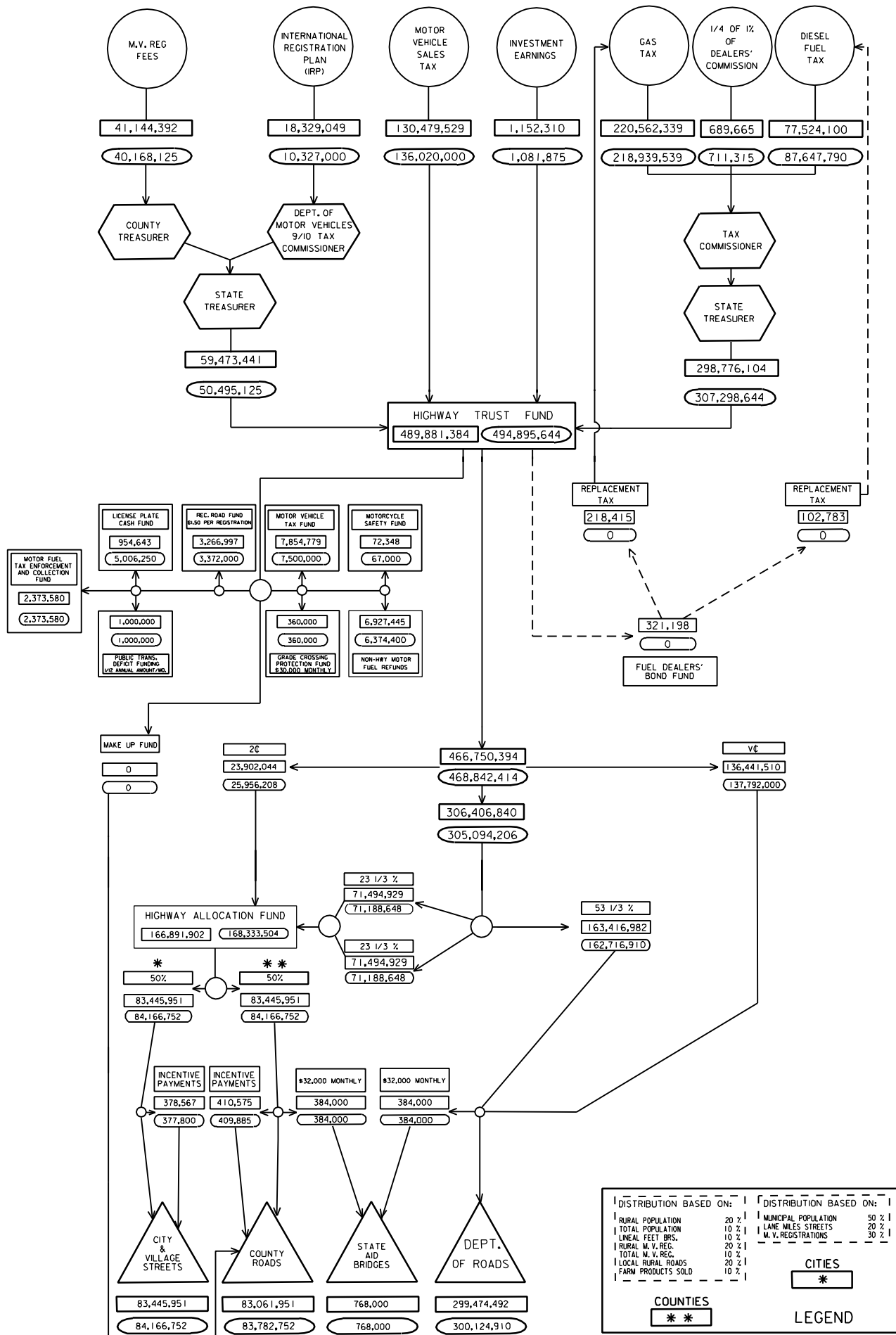


DISTRIBUTION OF STATE HIGHWAY TRUST FUND CALENDAR YEARS 2000 & 2001

CY 00 ACT.
CY 01 EST.

(BASED ON MONTH DISTRIBUTED)
(IN DOLLARS)



DISTRIBUTION BASED ON:		DISTRIBUTION BASED ON:	
RURAL POPULATION	20 %	MUNICIPAL POPULATION	50 %
TOTAL POPULATION	10 %	LANE MILES STREETS	20 %
LANE MILES STREETS	10 %	M.V. REGISTRATIONS	30 %
LOCAL RURAL ROADS	20 %		
FARM PRODUCTS SOLD	10 %		
		CITIES	
		*	
		COUNTIES	
		**	
		LEGEND	