

# the Roadrunner

Nebraska ♦ Department ♦ of ♦ Roads

August/September 2003

## A Trip Down Memory Lane...

This restored 1935 Ford dump truck, parked on a three-mile, original brick-paved segment of the Lincoln Highway near Elkhorn, evokes memories of a bygone era.

*See story on page 5.*

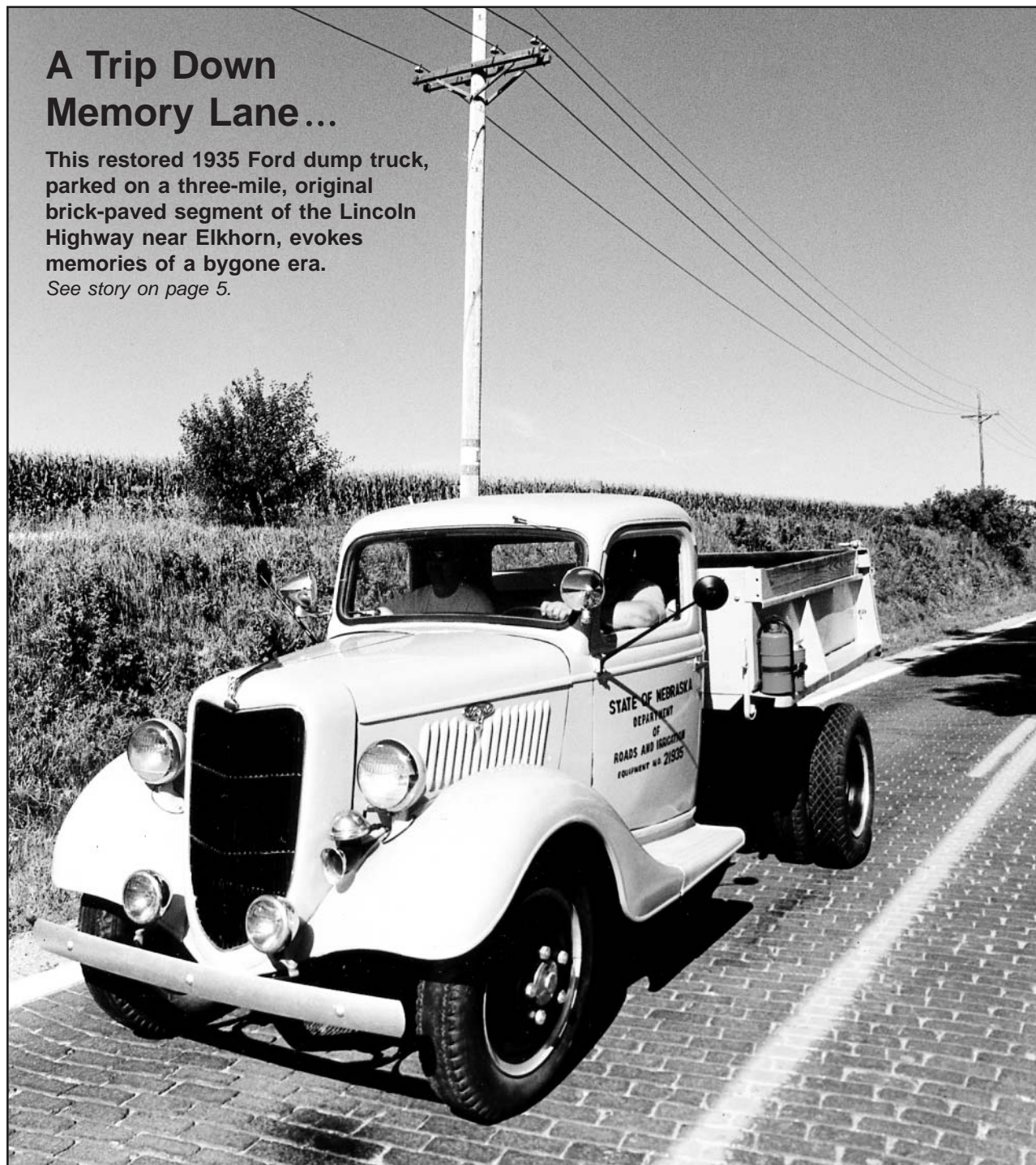


Photo by Jay Bailey

Published every two months by the  
**Nebraska Department of Roads**

Communication Division  
1500 Highway 2  
PO Box 94759  
Lincoln NE 68509-4759  
(402)479-4512  
[www.nebraskatransportation.org](http://www.nebraskatransportation.org)

**Governor Mike Johanns**

**Highway Commission**

Duane Acklie	Doug Leafgreen
Dick Reiser	Ronald Books
John Kingsbury	Greg Wolford
Donna Wanitschke	Jerome Fagerland

**Administration**

Roads Director ..... John L. Craig  
Deputy Director ..... Monty Fredrickson  
Deputy Director ..... John Jacobsen  
Legal Counsel ..... Jeff Schroeder

**Divisions**

Bridge ..... Lyman Freemon  
Communication ..... Mary Jo Hall  
Construction ..... Claude Oie  
Controller ..... Steve Maraman  
Government Affairs ..... Larry Shafer  
Human Resources ..... Sue Larson  
Information Systems ..... Jon Ogden  
Logistics ..... Dale Dvorak  
Materials & Research ..... Moe Jamshidi  
Planning & Project Development ..... Arthur Yonkey  
Project Scheduling ..... Roger Winkelhake  
Rail & Public Transportation ..... Ellis Tompkins  
Right-of-Way ..... Randy Needham  
Roadway Design ..... Eldon Poppe  
Traffic Engineering ..... Randy Peters  
Transportation Technology ..... Paul Cammack

**Districts**

District 1 ..... Richard Ruby  
District 2 ..... Tim Weander  
District 3 ..... Kristine Winter  
District 4 ..... V. Charles McCann  
District 5 ..... Craig Lind  
District 6 ..... Lester O'Donnell  
District 7 ..... James Knott  
District 8 ..... Mark Kovar

Editor ..... Linda M. Wilson  
Photographer ..... Jay Bailey  
Graphics ..... Diane German  
Jan Havranek, Jim Pester  
Printers ..... Dale Dreeszen, Craig Harrington

*printed on recycled paper*

The information in this newsletter is contributed  
by employees, retirees and friends of NDOR.



# Meritocracy

By **John L. Craig**  
Director, Nebraska Department of Roads

My 1967 copy of Webster's Seventh New Collegiate Dictionary does not have the word "meritocracy" so perhaps I have taken some liberties with the English language. The next best thing is Webster's definition of merit, "a: reward or punishment due, b: the qualities or actions that constitute the basis of one's deserts, c: a praiseworthy quality; virtue, d: character of conduct deserving reward, honor or esteem."

It is, and has been, my desire my entire life to see people rewarded and recognized based on performance regardless of other factors (gender, color of skin, creed, religion, culture, etc., etc.). It is a part of me and I cannot escape that. As such, I have strongly encouraged various initiatives within the department, including "raising the bar" on behavior and being less tolerant of grievous violations, improving the Rewards and Recognition Program, providing challenging work and rewarding high performance with rewards, recruiting, retaining and promoting the very best, allocating resources based on evidence and return on investment, etc.

## High Performance Levels

There is an implied message in all this. We want the best and expect high levels of performance. The Department of Roads has a long and proud history of doing this. In my book, demonstrated performance, as a productive member of the team, is synonymous with an organization that values "meritocracy."

So does meritocracy relate to business practices? My answer is yes. I have a book entitled "Haga's Law." The subtitle is "Bureaucracy, why the more you try to fix it the worse it gets." One of the principle assertions is that anxiety begets bureaucracy and bureaucracy begets anxiety. It is a vicious cycle. Our department culture reflects this paradox. Our department, as a part of society, is evolving toward deemphasizing command and control

to allow for a "freer" flow of work. Our country is founded on individual freedom. This is due in large part to the threat and anxiety created by a powerful few. In theory, democracy (the total population arriving at consensus) is great, but impractical. Therefore, our forefathers developed a republic (the population is represented by elected representatives). A republic is the form of government in the United States and Nebraska. However, these forms of government are bureaucratic in themselves and as this bureaucracy begets anxiety and anxiety begets bureaucracy, the cycle seems inescapable. As a practical matter, bureaucracy is an inescapable part of life, including in the Department of Roads.

## Benefits Outweigh Costs

So, what does any of this have to do with meritocracy? Meritocracy is a means to sort out where the benefits outweigh the costs. Not every new system, new office, division, section or position is worthy of inculcating into our culture and business practices. These kinds of decisions cannot be left to chance. They must be well analyzed and thought through to ascertain the costs versus the benefits. In the end, do these business processes have merit? Our "Quality Program" within the department is an essential component for us to wisely evaluate, change, institute or improve business practices. Like our Rewards and Recognition Congress last fall, I am anxious to improve our Quality Program, and there are efforts underway to do just that.

Meritocracy is about continuous improvement and rewarding and recognizing the best, whether people or business practices, and, by extension, contractors, consultants and our many partners. Incorporating "meritocracy" within the Department of Roads is the best of continuous improvement and it portends our future. It's going to be great! ♦





The bridge de-icing system at the Roca Spur, located off of U.S. Highway 77, south of Lincoln, was put to the test the first weekend of April with an anticipated snowstorm approaching. Further tests will be conducted this coming winter.

# Unique Bridge De-icing System Completed at Roca Spur

The Roca Spur, located off of U.S. Highway 77, south of Lincoln, has a unique new bridge, according to NDOR District 1 Project Manager Bob Traudt.

"The bridge is a normal 36.6 meter (120 feet), three-span concrete bridge," Traudt noted, "but it has an experimental bridge de-icing system."

According to Traudt, the system consists of a conductive concrete overlay on the deck that is powered by a three-phase 240-volt circuit. A computer control center located at the bridge site monitors the temperature of the bridge deck, ambient air temperature, and the electrical current draw.

The conductive concrete deck overlay is divided into 52 separate panels that alternate during the heating process. Each panel has a temperature sensor to monitor the concrete temperature, and the data is recorded in the computer memory. The computer may be connected at the site or by telephone modem.

According to NDOR Assistant Bridge Engineer Gale Barnhill, one of the bridge's designers, the conductive concrete system is designed to warm up enough to keep snow and ice from accumulating on the bridge. It is not intended to "dry out" the deck. There are only temperature sensors in the overlay.

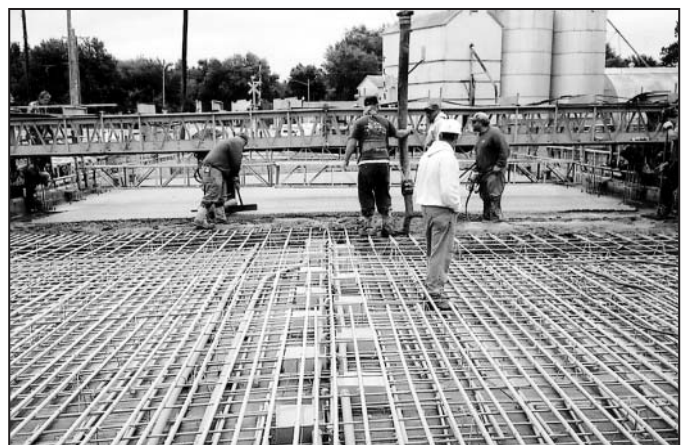
The de-icing system was energized for the weekend of April 5 this year with an anticipated snowstorm approaching. Stored data revealed that the ambient outside temperature was 31 degrees, and the average deck temperature was between 44 and 48 degrees. The bridge de-icing will be tested further this coming winter.

"The Roca Bridge is a prototype," according to Barnhill. "We know that conductive concrete has been used for a sidewalk project in Ohio. But this is the first time for a bridge."

NDOR research funds were used for research and a portion of the material costs associated with the conductive concrete. Federal funds paid for the remaining costs.

Work on the Roca Spur (S55F) began in April 2002 and was completed this past June. NDOR bridge designers Barnhill, Fouad Jaber and Terry Holman worked with University of Nebraska-Lincoln professor Chris Tuan, Scott Christensen, of Christensen Brothers, Inc., and Bill Kunze of Kayton Electric during the design and construction of the de-icing system.

Christensen Brothers, Inc. of Cherokee, IA, had the \$1,478,121 contract. Work on the project included grading, culverts, removal and replacement of the Salt Creek Bridge at the west edge of Roca, asphalt paving, guard rail and seeding. Bob Traudt was the project manager. Barry Hergenrader and Sharon Brandt performed all of the inspections on the project. ♦



Contractors are shown pouring the concrete for the structural deck.

# Internet Filtering Increases Flexibility, Reduces Risks

By Jon Ogden  
Information Systems Division  
Carolyn Mattice  
Human Resources Division

As you may have noticed, we have begun filtering Internet sites. If you go to a blocked site, you receive a message explaining why that site is blocked along with a reference link to NDOR's Acceptable Use Policy. This article will explain why we are filtering Internet access, what categories of sites are filtered and how we will log and report Internet usage.

Internet filtering is part of a larger system called Employee Internet Management. EIM software helps enforce acceptable use policies. It includes blocking Internet web sites deemed inappropriate as well as logging all Internet access. With EIM software, a category of Internet sites (Adult Content or Games) or a single site (<http://zone.msn.com>) can be blocked. Internet access can be blocked or allowed for a single person, a division or the whole department. Our EIM software also allows us to log, track and report Internet usage.

Filter rules set for the department do not allow access to Internet sites in the following categories:

- Adult Material  
(*Adult Content, Nudity & Sex*)
- Abortion Advocacy  
(*both Pro-Choice & Pro Life*)
- Alternative Journals
- Gambling
- Games
- Gay & Lesbian Issues
- Illegal/Questionable
- Internet Communications  
Web-based e-mail, Web chat,  
Instant Messaging
- Peer-to-peer file sharing
- Malicious Web Sites / Spyware
- Personals/Dating
- Racism/Hate
- Software/Freeware Download
- Tasteless
- Violence

Why do we need Internet filtering? We are logging and filtering Internet sites to improve employee productivity, network performance and security, and reduce liabilities from bad publicity and potential legal actions. Also, it is in accordance with both the NDOR Information Systems Acceptable Use Policy (ISAUP), available on-line at [http://intranet1/isd/quickref/security/References/NDOR\\_AUP\\_final.doc](http://intranet1/isd/quickref/security/References/NDOR_AUP_final.doc), and the Nebraska Information Technology Commission (NITC) Individual Use Policy, [http://www.nitc.state.ne.us/tp/workgroups/security/policies/individual\\_use\\_policy.pdf](http://www.nitc.state.ne.us/tp/workgroups/security/policies/individual_use_policy.pdf). Employees are encouraged to review and become familiar with these policies.

While there is no doubt the Internet has made employee's lives easier, it has also given workers access to new diversions at their desktop. With entertainment, gaming, sports, shopping and other activities available at the touch of a button, the Internet is a temptation many workers have a hard time resisting. Here are some facts on employee Internet access :

- 30 to 40 percent of Internet surfing is not business-related.
- 60 percent of online purchases made at work are for personal items.

To manage NDOR employee's Internet access, we are using a product called Websense. It is both a software application and a service. The application sits between your desktop PC and the Internet. When you go to an Internet site, the Websense software checks your request against the filter rules and its master database to determine if you are allowed to visit that site. The master database contains over 4 million web sites organized into 80 categories. It is updated nightly. Websense (not Roads) determines what sites are in each category.

Information regarding these categories is available on the Websense web site <http://www.websense.com/>

[products/about/database/categories.cfm](#).

Our objective is to create an environment where you can do your job while reducing the risks to Roads. As it states in the ISAUP, "NDOR employees should use IS resources for NDOR business only. Personal use of NDOR IS resources is to be kept to a minimum. NDOR management reserves the right to determine when an employee's use is excessive or improper." Accessing any site in the above categories is not required for any job at NDOR.

The Websense Internet Management application includes the ability to track and report all employees' use of the Internet. As stated in both the ISAUP and the banner message you see when you log into the network, "Anyone using this system (meaning the NDOR network) is subject to monitoring." We are not monitoring Internet activity to invade your privacy. It is done so we have general knowledge as to what Internet sites and categories are visited most often by NDOR employees. We are also looking for Internet abusers, since those are employees who may not be doing their jobs and may be wasting NDOR resources.

Our use of the Websense Internet Management tool provides us with the ability to allow great flexibility for employees while reducing risks associated with wide-open Internet access. Its use, coupled with awareness, will reduce Internet abuse and will provide greater employee productivity, network performance and security.

If you have questions regarding Employee Internet Management, our Internet Use Policy, or our use of Websense, please contact Pat Costello at 479-4593. Also, contact Pat if you believe a site is being improperly blocked. For any Human Resources issues regarding the Internet Use Policy, please contact Carolyn Mattice at 479-4346. ♦



# 2003 State Maps Offer Travelers Great Information

New official Nebraska road maps have been printed for 2003 and 2004, according to the Nebraska Department of Roads. Described as “eclectic,” they contain tried and true information from past state maps, along with several new features for travelers’ added convenience in locating planned destinations. Homage is displayed to the Lewis and Clark expedition, as Nebraska celebrates the Corps of Discovery’s 200th anniversary in 2003/2004.

New information on the map includes a county locator and a vehicle license index (by county numbers). All city populations have been updated with 2000 census information.

Additions to the map itself include two unincorporated towns added to the map and city index: St James (Cedar County) and Lindy (Knox County). New interchanges at Grand Island, Valley, Schuyler and Sioux City now appear on the map.

Two city inset maps have been added on the “back” side of the map due to their official census population increasing to over 10,000. Lexington and South Sioux City are now included with 16 other city insets.

Because of the additional map insets, the listing of licensed radio stations in Nebraska was removed. Travelers wanting a complete listing of radio stations, including locations, frequencies and call letters, may check the Nebraska Broadcasters Association website at [www.ne-ba.org](http://www.ne-ba.org).

Other new information for travelers using the 2003/2004 maps includes:

- 511 Year Round Weather & Travel Numbers
- Speeding Fine Schedule
- Updated List of Commemorative Highways

The 2003/2004 map retains the listing of Nebraska State Park areas and Nebraska’s major rules of the road.

The map’s front cover features the scenic Lewis & Clark Lake in northeast Nebraska, along with two inset photos: Chief Standing Bear

Memorial Bridge over the Missouri River at Niobrara; and the Strategic Air & Space Museum entrance on I-80, near Ashland. The back cover carries a photograph of Governor Mike Johanns and First Lady Stephanie near the State Capitol, and their welcoming message.

The printing cost for 1.6 million maps is \$137,473, about 8.6 cents per map. The maps will be available free of charge through Nebraska Department of Roads offices, Nebraska Travel and Tourism offices, local chambers of commerce, and tourism industry outlets. The highway map is also available on-line at [www.nebraskatransportation.org/maps/](http://www.nebraskatransportation.org/maps/) by downloading the free DjVu viewer (available on the Maps page). You may view/download a compressed version of the new map in high resolution. The new map is also available to view/download in jpg format. ♦



## About the Cover

### A Trip Down Memory Lane...

When a restored 1935 Ford dump truck recently traveled down the Lincoln Highway west of Omaha near Elkhorn, more than 150 years of history came together. Thanks to the efforts of many, it is possible for future generations to better understand and appreciate the way of life of their ancestors.

Tom Miller, Highway Maintenance Worker Sr. at the Elkhorn Maintenance Yard in District 2, completed the restoration of the truck in June 2002, accomplishing his goal of restoring the truck and dedicating it to the Department of Roads employees who died while on the job. (See October/November 2002 issue of the Roadrunner.) Miller attends area car shows and drives the truck in antique car tours.

A partnership between Douglas County, the City of Omaha, the City of Elkhorn, NDOR and the Nebraska State Historical Society has resulted in an innovative preservation project for this original segment of 1920 roadway listed on the National Register of Historic Places. While urban development and growth in the Elkhorn-Douglas County area has resulted in tremendous traffic pressures, efforts are being made to deal with the highway’s immediate and long-term preservation.

The Lincoln Highway Association, created in 1913, envisioned the Lincoln Highway as the transcontinental road that would link New York City with San Francisco. The three miles of brick pavement in Douglas County is thought to be the only rural section of the Lincoln Highway in Nebraska that remains in good condition. ♦

# NECTAR Sweetens Access to Transportation Data

New web-based Geographic Information Systems tool provides NDOR employees with user-friendly access to current transportation-related information.



A new web-based Geographic Information Systems (GIS) tool has been developed by NDOR's Information Systems Division to provide employees with a user-friendly access to current transportation-related information, according to GIS Manager Dick Genrich. The Nebraska Enterprise Centerline Transportation Attribute Resource (NECTAR) provides access to data pertaining to roads, bridges, railroads, average daily traffic (ADT) locations, and a variety of other transportation categories, which were not easily accessible in the past, Genrich said.

Genrich commented, "We've got tons of data and it always has been hard to access. This is another desktop tool that hopefully will be useful to many."

Genrich noted that NECTAR is a decision-support tool, which allows the user to query multiple databases and map the results. Reports may also be generated using the data. He said the program came about after a GIS strategic plan was completed in 2000, indicating the need for easier access to data.

## Strategic Goals

Two of the five strategic goals which directly applied to NECTAR include:

- Establishing GIS as an integral part of the way the department conducts business and distributing the technology throughout the organization; and
- Gaining cooperation and buy-in for GIS through marketing, education, training and providing a support structure throughout the department.

The consultant, GeoDecisions, who developed the strategic plan, provided some key observations and critical issues, and four of the thirteen issues pertained to NECTAR:

- Many personnel would like to improve their access to and understanding of data for use in completion of their work tasks.
- More simple to use, direct access to data for GIS analysis is needed, especially through web-enabled interfaces.
- There is a data access "roadblock," because most of the databases are on the state Department of Administrative Services (DAS) mainframe.
- Extension of GIS capabilities to district offices is desirable.

## Favorable Results

Utilizing these observations, a plan was set in motion, and work began September 2002 to develop the NECTAR program. GIS Section Programmer, Mike Niedermeyer, and others at NDOR, worked with Genrich to prepare a pilot project, which was shown to District Engineers and a few Division Heads with favorable results. Claude Oie, NDOR Construction Engineer, was instrumental in the development of a specific application for his functional area.

According to Genrich, the NECTAR program became available early in July on the NDOR Intranet. Consequently, anyone with a web browser may access the program.

An example of the wide range of information available includes access to current construction projects, including project name and number, location, contractors, type of work and amount of time used and money spent. While this type of information is available on another program, SiteManager, a construction software package, NECTAR provides the information in a more concise manner, generating less paperwork. Once the query results are generated, a map can be created and viewed in any of the

following categories: statewide, U.S. Congressional Districts, Nebraska Legislative Districts, NDOR Districts, NDOR Maintenance Superintendents, NDOR Maintenance Supervisors, Counties or First Class Cities.

Some other helpful utilities include the 7½ minute quads, which are scanned images of topographic maps, called Digital Raster Graphics (DRG), from the United States Geological Survey, as well as aerial photography, called digital ortho photo quarter quarter quads (DOQQ). Also, Digilog photos taken by the GIS Section may be viewed with the generated features.

Other information that has been incorporated within NECTAR includes maintenance activity, guardrail locations, State of the System (SOS), fatal crash locations and Needs Study data, which incorporates the Integrated Highway Inventory (IHI). In addition to information relating to NECTAR, several other applications frequently used by NDOR employees are accessible on the page, including the reference post logbook, Digilog, 511 information and Road Weather Information System (RWIS).

## Expansion Plans

Genrich noted that while there is a great amount of information available, this is the tip of the iceberg, with plans for expansion in the future. Some possibilities include expansion of NECTAR to other divisions and applications, and plans to create an Internet version of the program.

According to Genrich, NECTAR's implementation should ultimately result in a better acceptance of the technology, enterprise-wide use of the technology, improved data accuracy and better use of time, which will translate into savings for the department. ♦

## Service Awards

**Congratulations** to these dedicated individuals for their work and continued service with the Department of Roads. They celebrate their service dates in *August* and *September*.

### 40 Years

Edward Barnes, District 2  
David Merklin, District 7  
Emerson Steele, District 8  
Lance Wallin, District 6

### 30 Years

Kevin Hindley, District 2  
Roger Niemann, Roadway Design  
Lloyd Peterson, Deputy Engineering  
Robert Samek, District 1  
Raymond Walrod, District 7

### 20 Years

Kenneth Adams, District 6  
Gregory Blunck, District 3  
David Gomez, Materials & Research  
Jerry Grooms, District 4  
Lorraine Hoevet, District 5  
Danny Kuss, District 7  
Ryan McKay, Construction  
C. Rex Wilson, Planning & Proj. Develop.

### 10 Years

Eugene Arduser, District 4  
Bernard Ganshert, District 5  
Richy Johnson, District 3  
David Kempkes, District 7  
Steve Loose, District 5  
Melissa Sheard, District 2  
Daniel Vanderheiden, District 3  
Jeffrey Walter, Right-of-Way

## A Rewarding Thought

*"We covet recognition  
that we earn by dint of  
our own hard effort."*

- Dennis LaMountain,  
Management Consultant

*Brought to you by the Rewards  
& Recognition Agency Panel.*

Nomination forms can be found on the  
Intranet at <http://www.dor.state.ne.us>  
on the Human Resources page.

# Rewards & Recognition

April, May, June 2003

## Employees & Managers of the Quarter

### Employees

### Managers

#### District 1

**Dean Dowding**  
Hwy. Construction Tech III  
Lincoln

**Hugh Holak**  
Project Manager  
Lincoln

#### District 2

**Donald E. McAndrew**  
Auto/Diesel Mechanic  
Elkhorn

**Gary Forman**  
Hwy. Maintenance Supervisor  
Omaha

#### District 3

**Chris Tuttle**  
Hwy. Maintenance Worker  
Norfolk

**Judy Schoenfeldt**  
Administrative Assistant  
Norfolk

#### District 4

**John Kropatch**  
Auto/Diesel Mechanic  
Osceola

**Dave Koelzer**  
Survey Coordinator  
Grand Island

#### District 5

**Alvin Rahmig**  
Maintenance Crew Chief  
Scottsbluff

None

#### District 6

**Doug Gertsch**  
Construction Tech  
North Platte

**Randal S. Keith**  
Hwy. Maintenance Supervisor  
Lexington

#### District 7

**Wes Collicott**  
IT Infrastructure Tech  
McCook

None

#### District 8

**Larry Goshorn**  
Hwy. Maintenance Worker  
Ainsworth

None

#### Central Headquarters

**Kathy Pankoke**  
Budget Officer II  
Controller

**John Schulte**  
Accounting Cost Manager  
Controller

**Mike Robbins**  
Highway Designer  
Bridge

**Brian Johnson**  
Engineer III  
Roadway Design



# Another 'Minor Miracle' on I-80

**On Friday, May 23, disaster struck Interstate 80 in western Nebraska for the second time within a year.**

A westbound semi-trailer truck, loaded with food cargo, slammed into the center support of a country road overpass head-on about three miles west of Big Springs, killing the driver and causing the bridge to collapse onto one of the nation's busiest highways. To compound the situation, the accident occurred during Memorial Day weekend.

The other incident occurred on July 6, 2002, when a flash flood caused the closure of a seven-mile stretch of I-80, between the Ogallala and Brule Interchanges, while bridge approaches that washed out in the weekend flood were repaired.

For the second time in a year, Nebraska Department of Roads employees, contractors, subcontractors,

law enforcement officials, emergency responders and many other transportation partners joined forces during a busy holiday weekend to complete needed cleanup and traffic restoration in record time.

Within 48 hours of the crash, all four lanes of I-80 were reopened, surpassing most estimates and easing concerns about problems with Memorial Day traffic. Six miles of I-80 were closed on both sides of the bridge while crews worked around the clock to remove 650-700 tons of debris from the crash site.

In addition to the semi that slammed into the bridge, three other eastbound semis were damaged, one when the bridge collapsed on the trailer, trapping it. The other two were damaged when they struck the partially collapsed bridge. A car was also trapped under the wreckage.

The interstate was not damaged, since the bridge landed on the median.

NDOR maintenance forces hauled twenty truckloads (approximately 200 cubic yards) of sand to protect the interstate mainline pavement.

## Cleanup and Traffic Control

More than 57 Nebraska Department of Roads workers from Districts 5 and 6 were involved in both cleanup and traffic control efforts. Districts 1 and 2 provided message boards and web postings. Capital Contractors Inc., of Lincoln, Nebraska, was the prime contractor for the demolition and removal of the structure. Several subcontractors assisted, including MGM of Ogallala, which was responsible for the removal of the destroyed semis and the car.

The Nebraska State Patrol dispatched troopers from Troop D, North Platte and Troop E, Scottsbluff. Troop E handled the investigation, detour route and security. The Deuel County Sheriff's Department also assisted. The Union Pacific Road Master managed the rail crossing on the detour route, assisting with flagging and traffic control. The Colorado Department of Transportation managed the traffic control for the detour route through Julesburg, Colorado, for the I-76 detour traffic.

Eastbound traffic on I-76 was directed around the closure on Highway 138 from Julesburg, Colorado through Big Springs, Nebraska. Westbound traffic exited at Big Springs and was directed on Highway 30 to Chappell, Nebraska.

NDOR Director John Craig provided oversight and District 6 Engineer Les O'Donnell served as Roads Incident Commander during the cleanup effort, assisted by District 6 Maintenance Superintendent Roger Klasna. District 5 Maintenance Superintendent Chris Ford, District 5 Highway Maintenance Supervisor Todd Peterson, Ogallala Area Highway Maintenance Superintendent Layne Childers and District 6 Highway Maintenance Supervisor



Working on a cushion of sand, the heavy equipment began the job of tearing apart the overpass so it could be hauled away.



# in Western Nebraska

Robert Hilton controlled state operations. Highway Project Manager Toby Thomsen of North Platte supervised contractor cleanup efforts and temporary access road construction.

The District 6 Operations Center was staffed by Connie Lyons, Office Clerk III; Jim Morpew, Permit Officer; and Tim Callahan, IT Support Technician.

When the interstate was closed at 9:30 p.m. on Friday, May 23, the most optimistic plans were to have I-80 reopened by the following Monday morning. But workers opened a west-bound lane by midmorning Sunday, May 25, and had all four lanes in both directions open at 11:00 p.m. Sunday, May 26.

Nebraska Governor Mike Johanns called the non-stop cleanup an "incredible accomplishment." He added, "There was a major amount of destruction that occurred out there. To think that that much debris was cleaned up and removed in that short of a time period is nothing short of miraculous."

Cleanup costs after the accident totaled \$263,000, including amounts for both contractors and state crews.

Les O'Donnell, NDOR District 6 Engineer, said the interstate bridge, built in 1969, was in good condition. Plans are to build a new two-span bridge eliminating the shoulder piers. The new bridge will be 28 feet wide, 6 feet wider than the demolished bridge. Cost to build the new bridge is approximately \$727,000 and Reiman Corp. of Cheyenne, Wyoming, is the contractor. A temporary road, which carries local traffic from the county road to the I-80 interchange at Big Springs, about three miles to the east, was recently completed at a cost of



**Top** - Before the damage on the I-80 overpass near Big Springs could be cleared, sand was brought in to cover and protect the interstate below the collapse.  
**Bottom** - Fortunately for this driver, his truck cab was not directly under the collapsed overpass.

approximately \$350,000. Federal matching funds will help cover costs.

## Web Page Updates

The NDOR website, [www.nebraska.transportation.org](http://www.nebraska.transportation.org), included a Big Springs web page, which was posted on the morning of May 24, and provided continuous updates several times a day throughout the I-80 cleanup. The website received an unusually high number of visits from May 24-25, and the Big Springs web page received 2,902 visits from May 24-31—almost 4 percent of the total hits

for the entire NDOR site. Also, the Big Springs page was "Number 5" on the list of NDOR website twenty top entry pages for May, indicating it was bookmarked by many and was the first place they went on the website.

May 24 was the busiest day for the Safetravel/USA Nebraska web page, which contains "511" road and weather information. The site received 3,376 visits on May 24, compared to an average of around 350 visits for the rest of the month. The May 24th total was one-fourth of the total for the entire month. ♦

# Job Directory

NDOR Highway Improvement Projects Currently Under Contract as of 7/18/03

Location Work Description Prime Contractor			
<b>District 1</b>			
Roca Northwest Bridge MCC, LLC Dearmont, Virgil (402)441-7681 \$563,983.95	Wilber - Crete Gr, Culv, Seed, Br, Gdrl, Elec, Bit Dobson Brothers Constr. Co. & Affiliates Kuper, Melvin (402)729-3489 \$4,440,125.55	Ceresco - Wahoo Gr, Conc Pav, Culv, Seed, Br, Gdrl, Elec Dobson Brothers Constr. Co. & Affiliates Sanburn, Bob (402)471-0850 \$13,765,215.42	N-2 at 148th Street, Lincoln Gr, Conc Pav Constructors, Inc. Traudt, Bob (402)471-0850 \$175,007.40
US-77 West Conc Pav U.S. Asphalt Co. England, Jim (402)471-0850 \$1,313,886.73	Brock West Gr, Culv, Br, Gdrl Elk Horn Construction Co. Lane, Chris (402)483-5466 \$374,446.97	Syracuse East & West Landscaping D.F. Lanoha Landscape Nursery, Inc. Sidiqi, Abdul (402)471-0850 \$138,495.00	In Bennet & South Bituminous Constructors, Inc. Traudt, Bob (402)471-0850 \$219,533.32
Seward East Gr, Conc Pav, Culv, Seed, Br, Gdrl, Bit Hawkins Construction Co. England, Jim (402)471-0850 \$1,605,852.33	Wymore Southeast Bridge Herbst Construction, Inc. Lane, Chris (402)483-5466 \$302,579.75	Davey - Ceresco Landscaping D.F. Lanoha Landscape Nursery, Inc. Sidiqi, Abdul (402)471-0850 \$68,524.00	Wymore North & South Bridges Gr, Br, Gdrl, Elec, Bit Herbst Construction, Inc. Vandegrift, Allen (402)729-3489 \$2,148,561.59
In Dawson Gr, Culv, Elec, Bit U.S. Asphalt Co. Habegger, Michael (402)335-4131 \$1,279,164.34	Talmage Southeast Bridge L.J. Webb Contractor, Inc. Mueller, Gerald (402)335-4131 \$554,971.11	I-80 To Utica Bituminous Werner Construction, Inc. Sidiqi, Abdul (402)471-0850 \$2,787,580.92	<b>District 2</b>
Dawson North Seed, Gdrl, Bit, Constructors, Inc. Habegger, Michael (402)335-4131 \$1,467,951.69	Nebraska City West Bridge Herbst Construction, Inc. Mueller, Gerald (402)335-4131 \$234,232.78	In Rising City & East Bituminous Omni Engineering, Inc. & Subsidiaries Sidiqi, Abdul (402)471-0850 \$1,908,965.42	West Dodge Bridge Over I-680 Gr, Conc Pav, Culv, Seed, Br, Gdrl, Fnc, Elec, Sign Chas. Vrana & Son Constr. Co. Baehr, Dennis (402)595-2534 \$15,694,829.63
Turkey Creek Channel Gr Negus-Sons, Inc. Habegger, Michael (402)335-4131 \$67,190.00	Julian North & South Gr, Conc Pav, Culv, Seed, Elec Dobson Brothers Constr. Co. & Affiliates Mueller, Gerald (402)335-4131 \$12,645,541.65	Staplehurst Spur Bituminous Omni Engineering, Inc. & Subsidiaries Sidiqi, Abdul (402)471-0850 \$336,460.25	Blair - Kennard Gr, Culv, Br, Gdrl, Elec, Bit Luxa Construction Co., Inc. Brown, Darin G (402)727-3292 \$4,244,619.96
In Peru Culv TCW Construction, Inc. Hitzeman, Don (402)335-4131 \$313,731.31	Milford - Lincoln Bituminous Werner Construction, Inc. Niazi, Babrak (402)471-0850 \$4,409,864.76	N-66 North Bituminous Omni Engineering, Inc. & Subsidiaries Sidiqi, Abdul (402)471-0850 \$1,129,635.54	In Greta & South Gr, Conc Pav, Culv, Seed, Gdrl, Elec Hawkins Construction Co. Farivari, Mo (402)595-2534 \$7,341,896.09
Humboldt Northwest Bridge L.J. Webb Contractor, Inc. Hitzeman, Don (402)335-4131 \$384,584.97	Hawthorne Avenue - Crete Gr, Conc Pav, Culv, Elec Werner Construction, Inc. Niazi, Babrak (402)471-0850 \$2,418,062.09	Jct US-34/L-80G Electrical Watts Electric Co. Sidiqi, Abdul (402)471-0850 \$7,919.60	N-370 to N-50 Gr, Conc Pav, Culv, Seed, Br, Gdrl, Fence, Elec, Sign Hawkins Construction Co. Fisher, Rick (402)595-2534 \$18,862,392.57
Cornhusker Hwy. Interchange Gr, Conc Pav, Culv, Seed, Br, Gdrl, Fence, Elec, Sign Constructors, Inc. Holak, Hugh (402)471-0850 \$11,870,599.65	Friend - Milford Bituminous Werner Construction, Inc. Niazi, Babrak (402)471-0850 \$1,351,028.45	Bellwood Northwest Bridge A.M. Cohron & Son, Inc. Sidiqi, Abdul (402)471-0850 \$302,044.15	Fairview Bridge Gr, Culv, Br, Gdrl Hawkins Construction Co. Fisher, Rick (402)595-2534 \$1,032,931.44
Princeton to N-33 Landscaping D.F. Lanoha Landscape Nursery, Inc. Holak, Hugh (402)471-0850 \$90,398.00	Friend South Culverts TCW Construction, Inc. Niazi, Babrak (402)471-0850 \$93,523.69	County Road At N-63 Gr, Culv, Bit Dobson Brothers Constr. Co. & Affiliates Sidiqi, Abdul (402)471-0850 \$193,899.53	N-370 To Ruff Road Gr, Conc Pav, Culv, Seed, Gdrl, Fence, Elec, Sign Hawkins Construction Co. Fisher, Rick (402)595-2534 \$39,143,149.79
Nebraska City South Gr, Conc Pav, Culv, Seed, Elec Dobson Brothers Constr. Co. Knutson, Dewaine (402)471-0850 \$7,989,733.51	Palmyra - Unadilla Landscaping D.F. Lanoha Landscape Nursery, Inc. Preble, Rodger (402)471-0850 \$107,400.00	Roca Spur Gr, Culv, Seed, Br, Gdrl, Bit Christensen Bros., Inc. Traudt, Bob (402)471-0850 \$1,478,120.53	168th St. Bridge Gr, Culv, Br, Gdrl Hawkins Construction Co. Fox, Mike (402)595-2534 \$955,735.90
Plymouth South Gr, Conc Pav, Br, Gdrl Elk Horn Construction Co. Kuper, Melvin (402)729-3489 \$490,101.70	Beatrice - Lincoln Conc Pav American Civil Constructors, Inc. & Subsidiary Preble, Rodger (402)471-0850 \$2,158,307.37	E Jct US-77/N-2 to Dodge Co. Line Conc Pav Ten Point Construction Co., Inc. Traudt, Bob (402)471-0850 \$206,183.10	Ft. Calhoun South Gr, Culv, Gdrl, Bit Western Engineering Co., Inc. Gjersvik, John (402)595-2534 \$1,129,155.72
	Wahoo South Gr, Culv, Seed, Br Hawkins Construction Co. Sanburn, Bob (402)471-0850 \$10,598,858.45		Fremont Southeast Bituminous Western Engineering Co., Inc. Jacobs, Micky (402)727-3292 \$642,430.19



60th/"L" St., Omaha  
Gr, Conc Pav, Culv, Elec  
Tab Holding Co., Inc.  
DBA Tab Construction  
Khalaf, Zahi (402)595-2534  
\$192,934.68

Springfield North  
Gr, Conc Pav, Culv, Br, Gdrl  
MCC, LLC  
Khalaf, Zahi (402)595-2534  
\$899,718.76

Jct I-680 - 96th St., Omaha  
Conc Pav  
Musselman &  
Hall Contractors, Llc  
Khalaf, Zahi (402)595-2534  
\$88,809.08

Papillion West  
Gr, Conc Pav, Culv, Br, Gdrl  
WBE Co., Inc.  
Peterson, Roger (402)255-3831  
\$3,299,003.92

In Blair  
Gr, Conc Pav, Culv,  
Seed, Fence, Elec  
Luxa Construction Co., Inc.  
Trujillo, Ray (402)727-3292  
\$6,183,447.41

I-680 to N-36, Omaha  
Gr, Conc Pav, Culv, Seed,  
Br, Gdrl, Elec  
Hawkins Construction Co.  
Veverka, Frank (402)727-3292  
\$12,915,674.88

198th St. - Skyline Dr., Omaha  
Gr, Conc Pav, Culv, Seed,  
Br, Gdrl, Fence, Elec, Sign  
Hawkins Construction Co.  
Weander, Marty (402)595-2534  
\$18,371,814.38

In Gretna  
Gr, Conc Pav, Culv, Br, Gdrl  
Chas. Vrana & Son Constr. Co.  
Wiebers, Steve (402)399-8552  
\$764,280.93

Waterloo Northwest  
Conc Pav  
Iowa Erosion Control, Inc.  
Wilson, Bill (402)595-2534  
\$323,343.02

Linoma Beach to N-31  
Gr, Seed, Gdrl, Bit  
Pavers Companies  
Wilson, Bill (402)595-2534  
\$844,000.00

72nd St., Western Ave. - 76th Dr.,  
Omaha  
Gr, Conc Pav, Culv, Elec  
Chas. Vrana & Son Constr. Co.  
Zelensky, Rich (402)595-2534  
\$7,069,253.11

Missouri River Br., Omaha  
Painting  
W.S. Bunch Co.  
Zelensky, Rich (402)595-2534  
\$750,165.70

### District 3

Schuyler East & West  
Gr, Conc Pav, Culv, Br,  
Gdrl, Elec, Sign  
Dobson Bros. Constr. Co.  
& Affiliates  
Anderson, David (402)564-5751  
\$19,184,951.80

Schuyler North  
Bituminous  
Werner Construction, Inc.  
Anderson, David (402)564-5751  
\$2,279,705.64

Coleridge - Hartington  
Bituminous  
Monarch Oil, Inc.  
Becker, Roger (402)254-6552  
\$249,279.75

US-20 to N-59  
Gr, Culv, Seed, Gdrl, Bit  
Dobson Brothers Constr. Co.  
& Affiliates  
Becker, Roger (402)254-6552  
\$1,647,544.98

Pender Southeast  
Gr, Br, Gdrl  
Christensen Bros., Inc.  
Brummond, Scott (402)375-7071  
\$566,762.96

Martinsburg - Ponca  
Br, Gdrl  
Herbst Construction, Inc.  
Brummond, Scott (402)375-7071  
\$171,037.25

Waterbury West  
Bridge  
Dixon Construction Co.  
Brummond, Scott (402)375-7071  
\$297,071.60

Emerson - Dakota City  
Bituminous  
Brower Construction Co.  
Brummond, Scott (402)375-7071  
\$1,429,665.45

Orchard East & West  
Gr, Culv, Seed, Bit  
Dobson Bros. Constr. Co.  
& Affiliates  
Colfack, Gene (402)336-2051  
\$3,498,473.27

Norfolk East  
Gr, Conc Pav, Culv, Seed, Elec  
Dobson Brothers Constr. Co.  
Davis, Rob (402)370-3474  
\$18,274,985.53

Tilden Northeast  
Gr, Conc Pav, Br, Gdrl  
Christensen Bros., Inc.  
Davis, Rob (402)370-3474  
\$951,589.68

In Decatur  
Gr, Conc Pav, Culv,  
Gdrl, Fence, Elec  
M.E. Collins Contracting Co., Inc.  
Francis, Jeff (402)375-7071  
\$2,717,717.15

Wayne East  
Gr, Culv, Br, Gdrl, Elec, Bit  
Brower Construction Co.  
Francis, Jeff (402)375-7071  
\$4,418,941.08

Niobrara State Park  
Gr, Culv, Gdrl, Bit  
Knight Asphalt, Inc.  
Hausman, Larry (402)254-6552  
\$1,212,890.38

Ponca State Park Recreation Rd.  
Gr, Culv, Seed, Bit  
Henningsen Const., Inc.  
Lane, Chris (402)483-5466  
\$1,600,015.76

Verdigre Northwest  
Gr, Br, Gdrl  
Herbst Construction, Inc.  
Lane, Chris (402)483-5466  
\$382,367.55

Wayne Northeast  
Gr, Culv, Br, Gdrl  
A.M. Cohron & Son, Inc.  
Mainelli, Mark (402)421-1717  
\$849,748.41

N-57 to West Jct N-15  
Bituminous  
Constructors, Inc.  
Mueting, Curt (402)370-3474  
\$796,720.66

Pender South  
Gr, Seed, Br, Gdrl, Elec, Bit  
Werner Construction, Inc.  
Mueting, Curt (402)370-3474  
\$1,723,825.71

Us-81 at Benjamin Ave., Norfolk  
Electrical  
Kayton Electric, Inc.  
Mueting, Curt (402)370-3474  
\$39,737.00

Albion Southeast  
Bridge  
A.M. Cohron & Son, Inc.  
Rathjen, Scott (402)362-7117  
\$300,406.20

Petersburg Southwest  
Bridge  
The Diamond Engineering Co.  
Rathjen, Scott (402)362-7117  
\$272,487.70

Winside North  
Br, Gdrl, Bit  
Brower Construction Co.  
Schulz, Ron (402)370-3474  
\$823,556.68

Battle Creek Southeast  
Bituminous  
Constructors, Inc.  
Schulz, Ron (402)370-3474  
\$786,348.62

Columbus South  
Bridge  
Dixon Construction Co.  
Trosper, Steven (402)564-5751  
\$990,505.49

Tarnov South  
Landscaping  
Gross Seed Co., Inc.  
Trosper, Steven (402)564-5751  
\$88,824.11

N-45 to US-81  
Bituminous  
Dobson Brothers Constr. Co.  
& Affiliates  
Trosper, Steven (402)564-5751  
\$2,059,726.96

5th St - 8th St, Columbus  
Gr, Conc Pav, Culv, Elec  
Paulsen, Inc.  
Trosper, Steven (402)564-5751  
\$1,371,729.60

Crofton North  
Gr, Culv, Seed, Br, Gdrl, Elec, Bit  
Constructors, Inc.  
Wiebelhaus, Bob (402)254-6552  
\$4,203,935.00

Jackson East Bridge  
Bridge  
Cramer & Associates, Inc.  
Wiebelhaus, Bob (402)254-6552  
\$187,411.00

US-20 to Missouri River Bridge  
Conc Pvmr Repair  
American Civil Constructors, Inc.  
& Subsidiary  
Wiebelhaus, Bob (402)254-6552  
\$365,765.43

Ponca Spur  
Gr, Culv, Seed, Bit  
Brower Construction Co.  
Wiebelhaus, Bob (402)254-6552  
\$467,100.83

Belden West  
Bridge  
Graves Construction Co., Inc.  
Wiebelhaus, Bob (402)254-6552  
\$218,677.91

Hartington North  
Culverts  
L.J. Webb Contractor, Inc.  
Wiebelhaus, Bob (402)254-6552  
\$141,700.05

### District 4

In Waco  
Gr, Conc Pav, Culv  
Paulsen, Inc.  
Anderson, Tom (402)362-5934  
\$857,029.49

Deshler East  
Gr, Br, Gdrl, Bit  
L.J. Webb Contractor, Inc.  
Anderson, Tom (402)362-5934  
\$1,094,967.63

Henderson - Waco  
Bituminous  
Werner Construction, Inc.  
Anderson, Tom (402)362-5934  
\$6,790,024.71

Sutton - Grafton  
Bituminous  
Werner Construction, Inc.  
Anderson, Tom (402)362-5934  
\$1,191,138.61

Elm Creek Viaduct  
Gr, Culv, Br, Gdrl, Elec, Bit  
United Contractors, Inc.  
Farber, Tom (308)865-5434  
\$4,282,819.97

Miller North  
Bituminous  
Dustrol, Inc.  
Farber, Tom (308)865-5434  
\$124,294.56

Kearney North  
Gr, Conc Pav, Culv, Seed,  
Br, Gdrl, Elec  
Werner Construction, Inc.  
Farber, Tom (308)865-5434  
\$5,884,195.46

Jct. US-30 & N-10/N-44, Kearney  
Electrical  
Dominion Construction Co.  
Farber, Tom (308)865-5434  
\$67,248.45

Grand Island East  
Gr, Conc Pav, Culv, Elec  
Werner Construction, Inc.  
Griepentstroh, Scott (308)385-6265  
\$2,455,189.41

I-80/US-34/281 Interchange  
Landscaping  
Gross Seed Co., Inc.  
Gripenstroh, Scott (308)385-6265  
\$36,364.20

Fullerton Northeast  
Br, Gdrl  
M.E. Collins Contracting Co., Inc.  
Gripenstroh, Scott (308)385-6265  
\$180,342.60

Fullerton South  
Gr, Br, Gdrl, Bit  
The Diamond Engineering Co.  
Gripenstroh, Scott (308)385-6265  
\$1,067,266.84

Alda - Grand Island  
Bituminous  
Werner Construction, Inc.  
Gripenstroh, Scott (308)385-6265  
\$36,910.73

N-2 over I-80  
Gr, Conc Pav, Culv, Br, Gdrl  
Capital Contractors, Inc.  
Gripenstroh, Scott (308)385-6265  
\$1,487,344.88

Central City East  
Culv, Br, Gdrl, Bit  
The Diamond Engineering Co.  
Heermann, Dennis (308)385-6265  
\$1,847,783.03

In Dannebrog  
Bridge  
L.J. Webb Contractor, Inc.  
Heermann, Dennis (308)385-6265  
\$407,600.55

Geneva North & South  
Gr, Conc Pav, Culv, Br, Gdrl, Elec  
Werner Construction, Inc.  
Kohmetscher, Lyle (402)462-1996  
\$16,859,071.23

Geneva North & South  
Seeding  
Nebraska Hydro-Seeding Co.  
Kohmetscher, Lyle (402)462-1996  
\$110,017.00

Shelton - Wood River  
Bituminous  
Western Engineering Co., Inc.  
Kohmetscher, Lyle (402)462-1996  
\$2,564,644.02

Minden - Gibbon  
Bituminous  
Constructors, Inc.  
Kohmetscher, Lyle (402)462-1996  
\$1,473,941.23

Junction US-30/N-92  
Gr, Culv, Seed, Br, Gdrl, Elec, Bit  
Hawkins Construction Co.  
Kwiatkowski, Rick (308)754-5411  
\$3,093,801.73

Pleasanton North & South  
Gr, Br, Gdrl, Elec, Bit  
Wilke Contracting Corp.  
Kwiatkowski, Rick (308)754-5411  
\$2,350,966.50

Elba Northwest  
Gr, Br, Gdrl  
L.J. Webb Contractor, Inc.  
Kwiatkowski, Rick (308)754-5411  
\$305,860.50

Cotesfield North & South  
Gr, Culv, Seed, Gdrl, Bit  
Dobson Bros. Construction Co.  
& Affiliates  
Kwiatkowski, Rick (308)754-5411  
\$1,623,386.61

US-30 West  
Bituminous  
Werner Construction, Inc.  
Kwiatkowski, Rick (308)754-5411  
\$1,396,719.42

Lawrence East  
Gr, Culv, Seed, Br, Gdrl, Bit  
Werner Construction, Inc.  
Meyer, Steve (402)462-1996  
\$5,644,665.62

Red Cloud West  
Bituminous  
Werner Construction, Inc.  
Meyer, Steve (402)462-1996  
\$857,740.24

Ayr East  
Gr, Culv, Br, Gdrl  
Simon Contractors & Subsidiaries  
Meyer, Steve (402)462-1996  
\$319,563.31

Clay Center South  
Bituminous  
Werner Construction, Inc.  
Meyer, Steve (402)462-1996  
\$501,951.27

Strang North & South  
Gr, Conc Pav, Culv, Seed, Elec  
Werner Construction, Inc.  
Ruxton, Bob (402)462-1996  
\$8,708,874.79

Ong West  
Bituminous  
Werner Construction, Inc.  
Ruxton, Bob (402)462-1996  
\$197,302.42

Grand Island South  
Gr, Conc Pav, Culv, Seed,  
Br, Gdrl, Fence, Elec, Sign  
Werner Construction, Inc.  
Weber, Kirk (308)385-6265  
\$9,800,324.79

Prosser North  
Gr, Culv, Br, Gdrl, Bit  
The Diamond Engineering Co.  
Weber, Kirk (308)385-6265  
\$613,457.24

In Scotia  
Gr, Conc Pav, Culv, Elec  
Werner Construction, Inc.  
Woodgate, Gerald (308)385-6888  
\$1,832,596.16

Wolbach West  
Gr, Culv, Seed, Br, Gdrl, Elec, Bit  
L.J. Webb Contractor, Inc.  
Woodgate, Gerald (308)385-6888  
\$2,308,111.47

S Jct N-91/US-281 to Boone Co.  
Line  
Bituminous  
Topkote, Inc.  
Woodgate, Gerald (308)385-6888  
\$101,587.04

## District 5

Scottsbluff/Sioux Co. Line North  
Bituminous  
Western Engineering Co., Inc.  
Applegate, Joe (308)632-7727  
\$2,007,202.24

Niobrara River South of Rushville  
Gr, Culv, Br, Gdrl, Bit  
Perrett Construction, Ltd.  
Carnahan, Brian (308)432-6144  
\$2,690,897.68

In Chadron  
Conc Pav  
Dana Fuller DBA Fuller Constr.  
Carnahan, Brian (308)432-6144  
\$96,440.50

In Bridgeport  
Bituminous  
Western Engineering Co., Inc.  
Custer, Dennis (308)262-1920  
\$730,732.26

Oshkosh North  
Bituminous  
Brown & Brown, Inc.  
Custer, Dennis (308)262-1920  
\$573,920.99

Statewide DMS  
Gdrl, Sign  
Watts Electric Co.  
Custer, Dennis (308)262-1920  
\$779,314.73

Scottsbluff - Minatare  
Gr, Conc Pav, Culv, Seed, Elec  
Western Engineering Co., Inc.  
Fast, Dean (308)632-7727  
\$8,552,774.73

In Alliance  
Gr, Conc Pav, Culv, Elec  
Simon Contractors & Subsidiaries  
Frickey, Russ (308)262-1929  
\$1,957,596.79

Melbeta West  
Gr, Culv, Seed, Bit  
Western Engineering Co., Inc.  
Gardner, Jerrold (308)632-1429  
\$2,692,228.41

Harrison Northeast  
Bridge  
Perrett Construction, Ltd.  
Gardner, Jerrold (308)632-1429  
\$448,691.06

West Kimball - East Kimball  
Bituminous  
Western Engineering Co., Inc.  
Gardner, Jerrold (308)632-1429  
\$1,492,615.76

Dix East  
Bituminous  
Western Engineering Co., Inc.  
Gardner, Jerrold (308)632-1429  
\$527,443.92

Chappell WB Rest Area  
Bldg. Construction  
M.E. Collins Contracting Co., Inc.  
Smith, Don (308)262-1920  
\$185,353.97

Chappell EB Rest Area  
Bldg. Construction  
M.E. Collins Contracting Co., Inc.  
Smith, Don (308)262-1920  
\$182,992.25

Box Butte Reservoir  
Bituminous  
Micheels Construction Co.  
Smith, Don (308)262-1920  
\$123,417.50

## District 6

Sutherland West  
Gr, Conc Pav, Culv, Seed,  
Gdrl, Fence  
Cement Products, Inc.  
Brinker, Gary (308)535-8033  
\$1,003,601.75

Gothenburg South  
Bridge  
Wilke Contracting Corp.  
Brinker, Gary (308)535-8033  
\$401,809.95

Gothenburg East  
Conc Pav, Br, Gdrl  
BRB Contractors, Inc.  
Brinker, Gary (308)535-8033  
\$1,686,626.59

Sutherland - Hershey  
Conc Pav  
Musselman & Hall Contr., Llc  
Brinker, Gary (308)535-8033  
\$412,668.92

Western Canal Bridge  
West of Ogallala  
Gr, Conc Pav, Br, Gdrl, Fence  
Simon Contractors & Subsidiaries  
Brinker, Gary (308)535-8033  
\$1,420,829.66

Tryon Northwest  
Bituminous  
Simon Contractors & Subsidiaries  
Halstead, Kerri (308)535-8031  
\$438,034.10

Ringgold North  
Bituminous  
Simon Contractors & Subsidiaries  
Halstead, Kerri (308)535-8031  
\$800,867.33

Sutherland Viaduct  
Gr, Culv, Seed, Br, Gdrl, Elec, Bit  
Capital Contractors, Inc.  
Morrell, Richard (308)535-8031  
\$4,410,332.06

US-83, North Platte Interchange  
Gr, Conc Pav, Culv, Seed,  
Gdrl, Fence, Sign  
Paulsen, Inc.  
Morrell, Richard (308)535-8031  
\$3,289,838.98

Newberry Interchange, No. Platte  
Gr, Conc Pav, Culv, Gdrl, Elec  
Cement Products, Inc.  
Morrell, Richard (308)535-8031  
\$719,586.85

District 6 - Districtwide  
Conc Pav  
Iowa Erosion Control, Inc.  
Morrell, Richard (308)535-8031  
\$143,620.34

Big Springs South  
Gr, Conc Pav, Br, Gdrl, Elec  
Western Engineering Co., Inc.  
Morrell, Richard (308)535-8031  
\$1,272,970.23

Big Springs West  
Bridge  
Reiman Corp.  
Morrell, Richard (308)535-8031  
\$727,075.47



Brule - Ogallala  
Gr, Culv, Seed, Gdrl, Elec, Bit  
Paulsen, Inc.  
Sawyer, Harlan (308)535-8033  
\$2,017,141.00

Ogallala Northeast  
Bituminous  
Micheels Construction Co.  
Sawyer, Harlan (308)535-8033  
\$39,196.90

I-80, Ogallala West Fence Repair  
Fence  
American Fence Co.  
Sawyer, Harlan (308)535-8033  
\$77,949.40

Halsey North  
Bituminous  
Constructors, Inc.  
Smith, Lloyd (402)376-2691  
\$371,856.04

Brady East  
Conc Pav  
Diamond Surface, Inc.  
Thomsen, Toby (308)535-8033  
\$1,889,966.54

Cozad - Darr  
Conc Pav  
Diamond Surface, Inc.  
Thomsen, Toby (308)535-8033  
\$1,903,226.79

Hershey - North Platte  
Gr, Conc Pav, Culv  
Cement Products, Inc.  
Thomsen, Toby (308)535-8033  
\$370,058.98

Statewide I-80 Rest Area Signing  
Sign  
Garcia-Chicoine Enterprises, Inc.  
Thomsen, Toby (308)535-8033  
\$294,700.75

Big Springs  
Emergency Repair -  
Clean Up Big Springs Bridge  
Capital Contractors, Inc.  
Thomsen, Toby (308)535-8033  
\$124,519.56

Big Springs  
Temporary Road - Big Springs  
Adams Construction Co. &  
Adams Land Improvement, Inc.  
Thomsen, Toby (308)535-8033  
\$305,251.00

Anselmo - Merna  
Gr, Culv, Seed, Gdrl, Elec, Bit  
Constructors, Inc.  
White, Dennis (308)872-6735  
\$3,986,213.77

Berwyn - Ansley  
Conc Pav  
Upper Plains Contracting, Inc.  
White, Dennis (308)872-6735  
\$2,664,865.54

Oconto North  
Gr, Culv, Seed, Br, Gdrl, Bit  
Paulsen, Inc.  
White, Dennis (308)872-6735  
\$9,181,360.56

## District 7

Curtis West & Eustis East  
Gr, Br, Gdrl  
Wilke Contracting Corp.  
Collins, Duane (308)345-8490  
\$184,046.60

Orafino to US-283 Bridges  
Gr, Agg, Culv, Seed, Br, Gdrl  
Adams Construction Co. &  
Adams Land Improvement, Inc.  
Collins, Duane (308)345-8490  
\$2,507,145.68

W 4 St - E 7 St, McCook  
Gr, Conc Pav, Culv, Br, Gdrl, Elec  
Paulsen, Inc.  
Doyle, Kelly (308)995-5397  
\$3,189,394.06

In Minden  
Conc Pav  
Iowa Erosion Control, Inc.  
Kuhn, Kenton (308)995-5397  
\$404,145.90

Holdrege North & South  
Bituminous  
Monarch Oil, Inc.  
Kuhn, Kenton (308)995-5397  
\$456,078.19

Franklin South  
Gr, Culv, Seed, Br, Gdrl, Bit  
Werner Construction, Inc.  
Quinn, Jerry (308)995-5397  
\$3,774,917.37

In Hendley  
Bituminous  
Paulsen, Inc.  
Quinn, Jerry (308)995-5397  
\$107,757.76

Funk to N-44  
Bituminous  
Paulsen, Inc.  
Quinn, Jerry (308)995-5397  
\$2,274,885.15

Hendley Southeast  
Bridge  
Simon Contractors & Subsidiaries  
Quinn, Jerry (308)995-5397  
\$258,506.98

Orleans East  
Gr, Culv, Seed, Br, Gdrl, Elec, Bit  
Werner Construction, Inc.  
Sell, Tim (308)995-5397  
\$4,813,919.34

Trenton Southeast  
Bridge  
Simon Contractors & Subsidiaries  
Stadler, Lisa (308)345-3710  
\$315,288.89

Hayes Center Northeast  
Culv  
Midlands Contracting, Inc.  
Stadler, Lisa (308)345-3710  
\$96,821.02

Hayes Center Southeast  
Culvert  
Midlands Contracting, Inc.  
Stadler, Lisa (308)345-3710  
\$120,826.55

District 7 - Districtwide  
Painting  
Vogel Traffic Services, Inc.  
Ziebell, Roger (308)345-8490  
\$763,213.73

Danbury Southwest  
Bridge  
Simon Contractors & Subsidiaries  
Ziebell, Roger (308)345-8490  
\$375,836.83

Butler Lake North  
Culverts  
Cement Products, Inc.  
Ziebell, Roger (308)345-8490  
\$388,279.95

Culbertson Southwest  
Bridge  
L.J. Webb Contractor, Inc.  
Ziebell, Roger (308)345-8490  
\$336,766.75

## District 8

Crookston - Valentine  
Bituminous  
Paulsen, Inc.  
Gustafson, Jay (402)376-1350  
\$1,467,869.66

Niobrara River Br. North & South  
Bituminous  
Monarch Oil, Inc.  
Gustafson, Jay (402)376-1350  
\$192,265.38

Maintenance Facility At Naper  
Bldg. Construction  
Radec Construction Co. Inc.  
Rau, Larry (402)387-2471  
\$402,040.00

Newport North  
Culv, Br, Gdrl, Bit  
Werner Construction, Inc.  
Rau, Larry (402)387-2471  
\$2,559,569.32

Wood Lake - Johnstown  
Bituminous  
Monarch Oil, Inc.  
Rudnick, Michael (402)387-2471  
\$345,749.34

Stuart North  
Bridge  
Christensen Bros., Inc.  
Smith, Lloyd (402)376-2691  
\$686,849.40

Chambers Northwest  
Gr, Br, Gdrl  
A.M. Cohron & Son, Inc.  
Smith, Lloyd (402)376-2691  
\$431,778.07

O'Neill North  
Gr, Culv, Seed, Bit  
Werner Construction, Inc.  
Ziska, Dan (402)336-2051  
\$5,268,204.49

### Key:

Bituminous - Bit  
Bridge - Br  
Building - Bldg  
Concrete Pavement - Conc Pav  
Culverts - Culv  
Electrical - Elec  
Grading - Gr  
Guardrail - Gdrl  
Seeding - Seeding

## Our Top Twenty

NDOR employees with the most *total state service*  
as of July 2003.

Name	Office	Service Date
1. Andreasen, Merritt A.	Elkhorn (D-2)	05-28-51
2. Hausman, Larry J.	Hartington (D-3)	08-15-51
3. Wenzl, Louis P.	Lincoln (HQ)	05-01-53
4. Bumanis, Osvalds O.	Lincoln (HQ)	12-04-53
5. Voss, Ernest W.	Lincoln (HQ)	03-22-54
6. Regelean, Irene G.	Lincoln (HQ)	05-28-54
7. Henning, Arnold H.	Lincoln (HQ)	08-04-54
8. Norris, Barbara K.	Lincoln (HQ)	09-12-55
9. Schaefer, E. L.	Norfolk (D-3)	04-12-56
10. Henning, Loren E.	Lincoln (HQ)	10-08-56
11. Engel, Barbara K.	Lincoln (HQ)	03-28-57
12. Eglite, Andrejs	Lincoln (HQ)	06-07-57
13. Sharp, Daniel J.	Lincoln (HQ)	06-10-57
14. Shafer, Larry G.	Lincoln (HQ)	09-07-57
15. Pavel, Leland D.	Lincoln (HQ)	09-09-57
16. Yonkey, Arthur B.	Lincoln (HQ)	12-01-57
17. Freemon, Lyman D.	Lincoln (HQ)	01-20-58
18. Smets, William N.	Lexington (D-6)	04-01-58
19. Ronnau, Dalyce F.	Lincoln (HQ)	06-09-58
20. Lentz, Freddie D.	Omaha (D-2)	07-28-58

# We Get Letters ...

June 20, 2003

Dear Mr. Craig,

*In my many travels back to Ainsworth, I have never had any car problems, but on June 13, I had the unfortunate luck to experience a blowout between the towns of Brewster and Dunning. It was a rainy afternoon, and even though I put my hazard lights on, several cars passed me by. I admit looking at a flat tire, especially in the rain, wouldn't be a big drawing card to very many. But to my great appreciation, one of your employees happened by and stopped to offer assistance. Don Whiteman was the man who stopped by to help me. He said he was out of Broken Bow.*

*The tire changing proved a challenging job with the weather conditions, but Mr. Whiteman was determined to get me on the road again. I offered to pay him for his trouble and he stated he would take nothing for the job he did. He said that he just hoped someone would help his wife if she should ever have trouble on the road. I thought that was a kind and caring comment.*

*I just wanted to convey to you what a great job Mr. Whiteman did that day in assisting me. I am grateful to him for helping me. Congratulations on having such an exceptional employee.*

Sincerely,

Linda L. Palmer  
Colorado Springs, CO

**Editor's Note:** Don Whiteman is a District 5 Hwy. Maintenance Supervisor at Broken Bow.

July 9, 2003

*On July 7, I had car trouble on Highway 30 near Brule. The road crew working there stopped and helped me get the assistance I needed. They were so nice and so helpful, I just wanted to make sure someone knew how much it meant to me. Thanks again to the great people who helped!*

Cynthia Colean

**Editor's Note:** The helpful Roads employees are Brian Roehrs and Justin Smith, Hwy. Maintenance Workers at District 6 in North Platte.

**The Department of Roads receives numerous complimentary letters. The letters printed here are representative of those often sent praising the many fine and deserving employees of the Department of Roads.**

## TURF & GARDEN

By Dick Gray  
Agronomist



## Enjoy Late Summer's Bounty

**Turf** - Where has the summer gone?? It is time to plant grass again. Try to have your fescue and bluegrass planted by September 1 for best results. Keep the mower at 3 inches until the temperature cools down; then you can go lower to 2½ inches for the remainder of the season. Will the rains return? Keep the water at 1 to 1½ inches per week, and as it cools down you can apply a little less. Remember Zoysia, the answer to no lawn maintenance? Forget that. Zoysia has a fungus problem that is expensive to stop. Bayleton is the chemical to use. It is a systemic that will get into the plant and bring the fungus under control. Zoysia needs to be aerated to help prevent the fungus. A core aerator is recommended and June is the recommended month. Did you treat for grubs? If you did not and grubs are wrecking your lawn you can use Dylox as a rescue treatment.

**Trees** - With little rain since mid-July, your trees and shrubs need a good watering, too. Mid- to late August is the time to move evergreens again. This gives them enough time to develop new roots to gather moisture and gives them a better chance to make it through the winter. Mulch them with 4 inches of wood chips, and check under the wood chips before you water them. Too much water is not good for the trees, either. It is best to keep them damp, not soggy.

**Garden** - The garden produce should be rolling into the kitchen now. Too much produce? Remember the food banks with your extra veggies. Has the growing season increased? From the Weather Calendar: "In parts of North America the growing season has increased up to 12 days longer than it was 100 years ago. In Eurasia the increase is as much as 18 days." Global warming? Could be.





# All <sup>in</sup> the Family

**Information for "All in the Family" should be sent to the Communication Division. Appropriate information will be included in future Roadrunners.**

**Please note: Birth announcements, which were temporarily discontinued in the "All in the Family" section of the Roadrunner, will once again be published as long as written permission is received by the Communication Division. This is necessary, as NDOR is required to adhere to new privacy laws under the Health Insurance Portability and Accountability Act (HIPAA).**

## Condolences

Right-of-Way Division extends sympathy to Julie Westergren on the death of her father. Julie is a Hwy. Associate II.

Sympathy to Cindy Burnett on the death of her father-in-law. Cindy is an Office Clerk III with Highway Safety-Traffic Engineering.

Condolences to Charlayne Carpenter on the death of her parents, John F. and Prudence Thiel. John retired in 1989 from District 3 in Wayne where he was a Hwy. Maintenance Worker Sr.

Condolences to the family of Arline "Gov" Ulrich. Gov retired in 1989 from District 3 in Wayne where he was a Hwy. Maintenance Worker Sr.

District 4 would like to offer condolences to Everett Koch on the death of his father. Everett is a Construction Tech III in Grand Island.

## Weddings

Congratulations to Stacey and Jason Cieslik on their marriage on May 17. Stacey's parents are Jeanne and Mark Hamilton. Jeanne is a ROW Designer III in Right-of-Way, and Mark is Facilities Maintenance Manager in Logistics.

Congratulations to Sherri and Andy Cunningham on the marriage of their son, Philip to Renee' Hruska on June 27. Andy is Hwy. Liaison Manager in Government Affairs.

## Births

Congratulations to Jan and Shawn Voss, first-time parents, who have welcomed a baby daughter, Grace Marie into their family. Jan is a Statistical Analyst in Highway Safety-Traffic Engineering.

Joey and Denny Kramer are proud grandparents of Shanna Haily, born May 30. Joey is a ROW Agent II in Right-of-Way.

George Howard is a proud grandfather of Brady Adam, born June 9. George is a Hwy. ROW Associate II in Right-of-Way.

Paul and Kimm Fintel are proud parents of Gabriel Christian, born March 16. Paul is a Hwy. ROW Designer II in Right-of-Way.

Ryan and Kay McKay are proud first-time grandparents of David Wesly, born February 19. Ryan is a Hwy. Cost Estimator in Construction and Kay is a Buyer in Logistics.

Kay and Ron Benson are proud grandparents of their fourth grandchild, Aidan Michael, born June 26. Kay is the Operations Manager in Logistics.

Lou and Laura Lenzen are proud grandparents of Max Thomas, born July 7. Lou is Assistant Design Engineer in Roadway Design and Laura is Engineer V in Traffic Engineering.

Congratulations to Stacy and Sharon Leners on the birth of Emma Grace, born August 12, 2002. Stacy is a Hwy. Maintenance Worker Sr. at District 1 in Beatrice.

Congratulations to Jason and Christy Moore on the birth of Brandon Glenn, born January 17. Jason is a Hwy. Maintenance Worker Sr. at District 1 in Beatrice.

Congratulations to Gary and Marlyss Forman on the birth of their first grandson, Gannon David, on April 3. Gary is Hwy. Maintenance Superintendent at District 2 in Omaha.

Congratulations to Shelly Minard on the birth of Alec Daniel, born April 24. Shelly is a Hwy. Construction Tech I at District 2 in Omaha.

Congratulations to Bill and Angie Kernes on the birth of Nicholas Cole-David, born May 1. Bill is a Hwy. Maintenance Worker Sr. at District 2 in Omaha.

Anthony and Julie Tschirren are proud parents of Bradyn Anthony, born June 11. Anthony is Hwy. Maintenance Supervisor at District 3 in Neligh. Grandfathers are Larry Good, Auto/Diesel Mechanic in Neligh, and Rich Tschirren, Auto/Diesel mechanic in Norfolk.

Rick and Stacy Kuehn are proud parents of Macalister John, born May 8. Rick is a Construction Tech at District 3 in Hartington.

Congratulations to Rick and Ilene Butler on the birth of granddaughter Emmy Elizabeth, born June 12. Ilene is a Staff Assistant I at District 4 in Hastings.

Congratulations to Lyle Kohmetscher on the birth of granddaughter Brooklyn Nicole, born July 19. Lyle is a Project Manager at District 4 in Hastings.

Steve Johnson is proud grandfather to Keally Elisabeth born July 16. Steve is a Hwy. Construction Tech III at District 4 in Grand Island. Keally's mother is Jenny Peck, who had worked for two summers at NDOR while attending UNL.

Congratulations to Jeff and Amy Nichols on the birth of Mason Edward, born March 23. Jeff is a Hwy. Construction Tech II at District 5 in Bridgeport.

## This 'n that

The Construction Division extends fond farewells to Sharon Nichols who retired on July 18 with over 40 years of service with NDOR. Sharon worked as Hwy. Cost Estimator in Construction Division and District 1. She will be living in Sun City, Arizona.

The Seward JAZZ 12-&-under fastpitch softball team won the State Class B Championship in North Platte over the July 4th weekend. The team also placed 5th out of 25 teams, in the Regional Tournament at Burlington, Iowa. Hailey Behlen, daughter of Kelly Behlen, Hwy. ROW Project Manager in Right-of-Way, played on the JAZZ team.

Joyce Wells, Office Clerk III, and Jean Gorham, Typist II, participated in the 2003 Lincoln Metro American Heart Walk in May, and also the American Cancer Society Relay for Life Walk held in Waverly. They both work in Highway Safety-Traffic Engineering.

Congratulations to Joe Gasper, son of Carole and Lou Gasper, who graduated from Lincoln Southeast High School. Carole is the Accident Records Supervisor in Highway Safety-Traffic Engineering.

Doug Sick was named Firefighter of the Year for the Sidney Volunteer Fire Department. Doug was cited for his work with the pickle card fund. During the past 10 years he helped the SVFD raise more than \$135,000 used to supplement equipment, ranging from vehicles, rope rescue gear and pagers. Doug is a Crew Chief at District 5 in Sidney.

Todd Vergil graduated from Hastings College with a BA degree in Computer Science and a minor in Economics and Accounting. Todd is the son of Cindy and Amador Vergil and grandson of Dennis and Barb Custer. Cindy is Staff Assistant I and Dennis is Project Manager, both at District 5 in Bridgeport.

### Year-Round Nebraska Traveler Information



**Dial from anywhere in Nebraska,  
cell phone or landline.**

**If outside Nebraska (800)906-9069.**

**Short-term, route specific weather  
forecasts and road condition  
reports for state highways.**



[www.nsp.state.ne.us](http://www.nsp.state.ne.us)



[www.dor.state.ne.us](http://www.dor.state.ne.us)

# NDOR Events Calendar

## — August —

- 12 New Employee Orientation Program**  
NDOR Central Headquarters  
Contact Steve Olson @ 479-3601
- 22 Hwy. Commission Meeting**  
10:00 a.m., Hwy. Commission Meeting Rm.  
Contact Shirley Schafer @ 479-4530
- 29 Project Scheduling Meeting**  
8:30-11:30 a.m., NDOR Auditorium  
Contact Craig Anderson @ 479-4666

## — September —

- 1 State Holiday – Labor Day**
- 3 Transit Summit**  
Embassy Suites, Lincoln  
Contact Jerry Wray @ 479-4694
- 4 Letting**  
1:30 p.m., NDOR Auditorium  
Contact Liz Wunderlich @ 479-4528
- 7-13 National Stop on Red Week**
- 9 New Employee Orientation Program**  
NDOR Central Headquarters  
Contact Steve Olson @ 479-3601
- 11 Patriot Day**
- 17-18 Annual Rewards & Recognition Ceremony**  
Red Lion Inn, Omaha
- 19 Bd. Public Roads Class & Stds.**  
9:00 a.m., NDOR Auditorium  
Contact Andrew Cunningham @ 479-4569
- 26 Hwy. Commission Meeting**  
10:00 a.m., Hwy. Commission Meeting Rm.  
Contact Shirley Schafer @ 479-4530

## — October —

- 2 Project Scheduling Meeting**  
8:30-11:30 a.m., NDOR Auditorium  
Contact Craig Anderson @ 479-4666
- 2 State Govt. Nebraska Mgmt. Exposition**  
State Capitol – Contact Lois Danico @ 479-4331
- 6-10 Drive Safely Work Week**
- 7 New Employee Orientation Program**  
NDOR Central Headquarters  
Contact Steve Olson @ 479-3601
- 8 National Walk to School Day**
- 9 Letting**  
1:30 p.m., NDOR Auditorium  
Contact Liz Wunderlich @ 479-4528
- 10 Put the Brakes on Fatalities Day**
- 13 State Holiday – Columbus Day**
- 17 Hwy. Commission Meeting**  
10:00 a.m., Hwy. Commission Meeting Rm.  
Contact Shirley Schafer @ 479-4530
- 19-25 National School Bus Safety Week**
- 27-31 Nebraska Winter Weather Awareness Week**

If you would like a key event included on upcoming calendars, call the Communication Office 479-4512 or e-mail lwilson@dor.state.ne.us. Information for the October/November Roadrunner should be received by September 19.

Nebraska Department of Roads  
Communication Division  
1500 Hwy 2  
PO Box 94759  
Lincoln NE 68509-4759  
27-6900

Address Service Requested

PRSRT STD  
U.S. POSTAGE  
**PAID**  
LINCOLN, NE  
PERMIT NO. 212