

# Highway35

---

Corridor Study and Environmental Impact Statement Public Information Meeting  
Scoping Newsletter

June 2002

## WELCOME

Thank you for taking the time to get involved in the scoping process associated with the Nebraska Highway 35 corridor improvement study.

The purpose of this meeting is to:

- Provide the public and various State and Federal agencies with an overview of the study process.
- Provide information on the general area of impact associated with corridor alternatives.
- Obtain input from the public and agencies regarding concerns/issues associated with the various corridor alternatives.
- Provide information on the study schedule.

## Study Background

The Nebraska Department of Roads (NDOR), in cooperation with the Federal Highway Administration (FHWA), is studying the impacts/benefits of providing a four-lane divided highway between Norfolk and South Sioux City, Nebraska. The proposed project study area includes Madison, Stanton, Wayne, Dixon and Dakota Counties and is adjacent to Thurston County.

The proposed action is to improve a 70-mile corridor of Nebraska Highway 35 (N-35) that extends from the US Highway 275 / Nebraska Highway 35 / Nebraska Highway 24 intersection in Norfolk to South Sioux City. The study area is shown in the figure on Page 2.

## Study Purpose and Need

The purpose of the Nebraska Highway 35 (N-35) project is to provide a four-lane improved roadway connection between Norfolk and South Sioux City. The facility would also offer improved access between northeast Nebraska and other regional and national destinations.

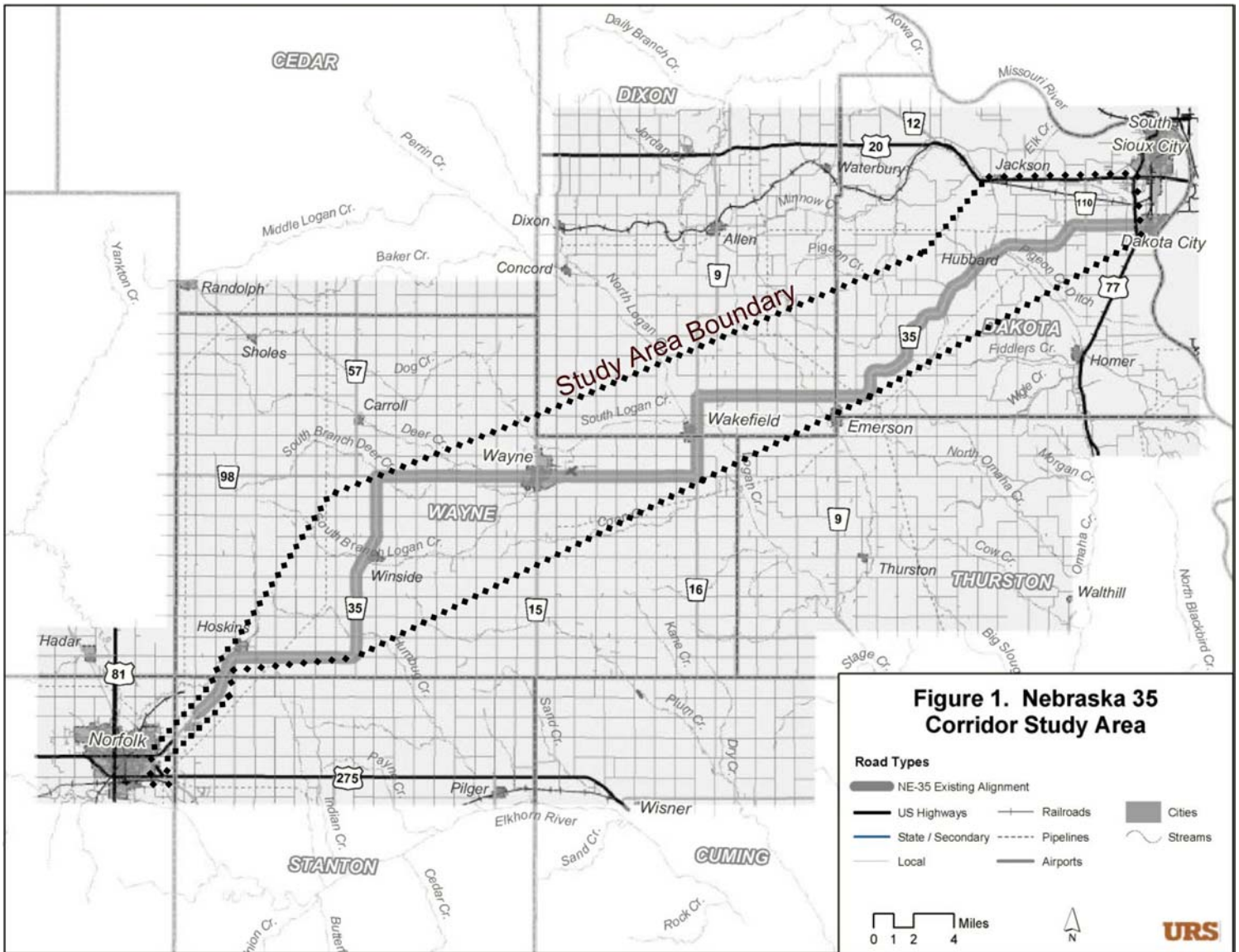
The proposed N-35 project is intended to:

- Improve mobility and accessibility within and through the region
- Improve safety
- Provide a cost-effective transportation solution
- Provide a transportation solution that minimizes environmental impacts

The proposed N-35 project is needed to complete a transportation system connection for the region. The role that the NE 35 corridor plays in the region is predicted to change as the result of upgrading to four-lane expressways the following roadways:

- US 81 between Norfolk and the Kansas State Line. South of the state line, Kansas is also improving US 81 to a four-lane expressway.
- US 75 and State Highway 60 from Sioux City, Iowa to Minneapolis, Minnesota
- US 20 between Sioux City, Iowa and Chicago, Illinois
- US 151 between Dubuque, Iowa and Madison, Wisconsin

Upgrading the N-35 corridor to a four-lane divided highway would provide enhanced system continuity in the region.



**Figure 1. Nebraska 35  
Corridor Study Area**

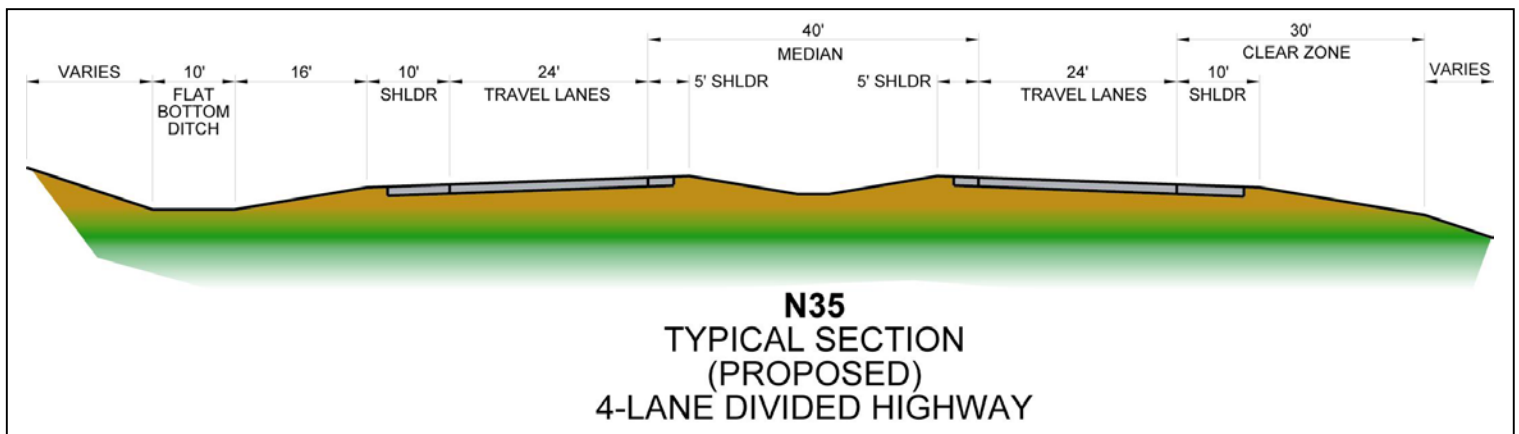
**Road Types**

- NE-35 Existing Alignment
- US Highways
- State / Secondary
- Local
- Railroads
- Pipelines
- Airports
- Cities
- ~ Streams

0 1 2 4 Miles



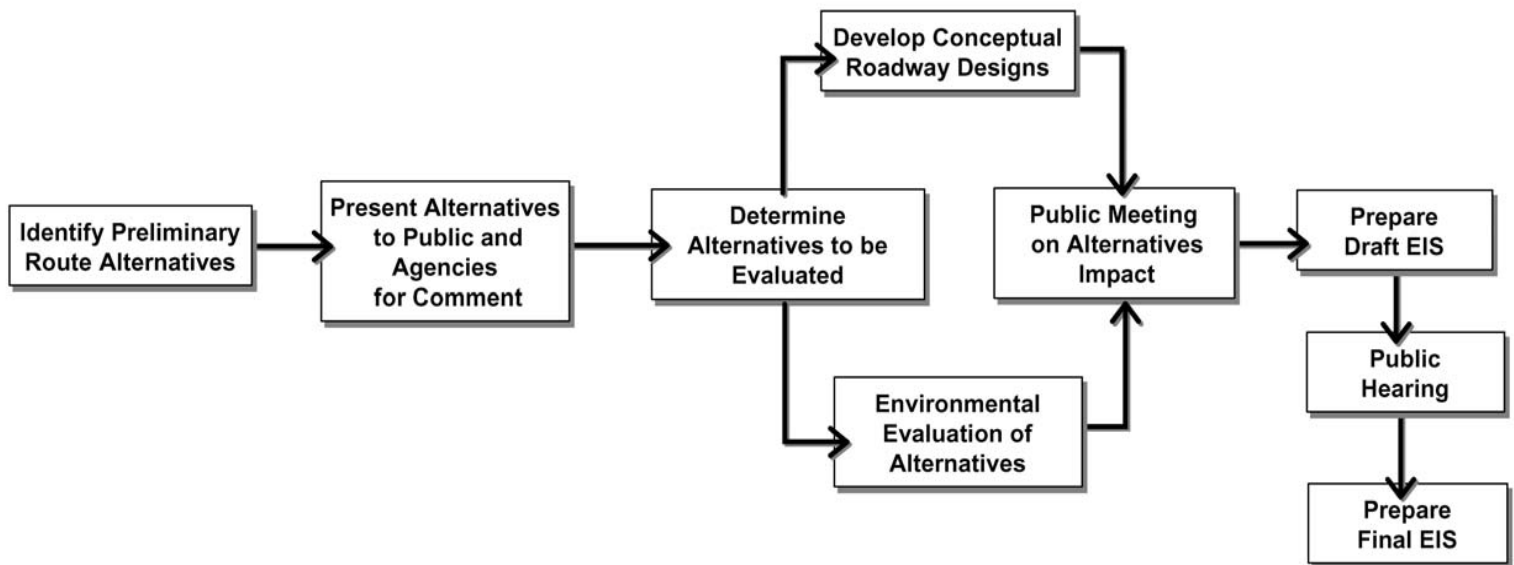
**URS**



## Process Overview

Based on the findings of a feasibility study, the Nebraska Department of Roads (NDOR) recommended that a more detailed evaluation of the N-35 corridor be completed. This process would include preliminary engineering, a Federal Environmental Impact Statement (EIS), and public input.

An EIS is done to comply with the National Environmental Policy Act (NEPA) which states that an environmental analysis must be completed to determine potential impacts before federal funds can be used for a project. The flowchart below summarizes the process and shows how engineering, environmental analysis, and public input interact.

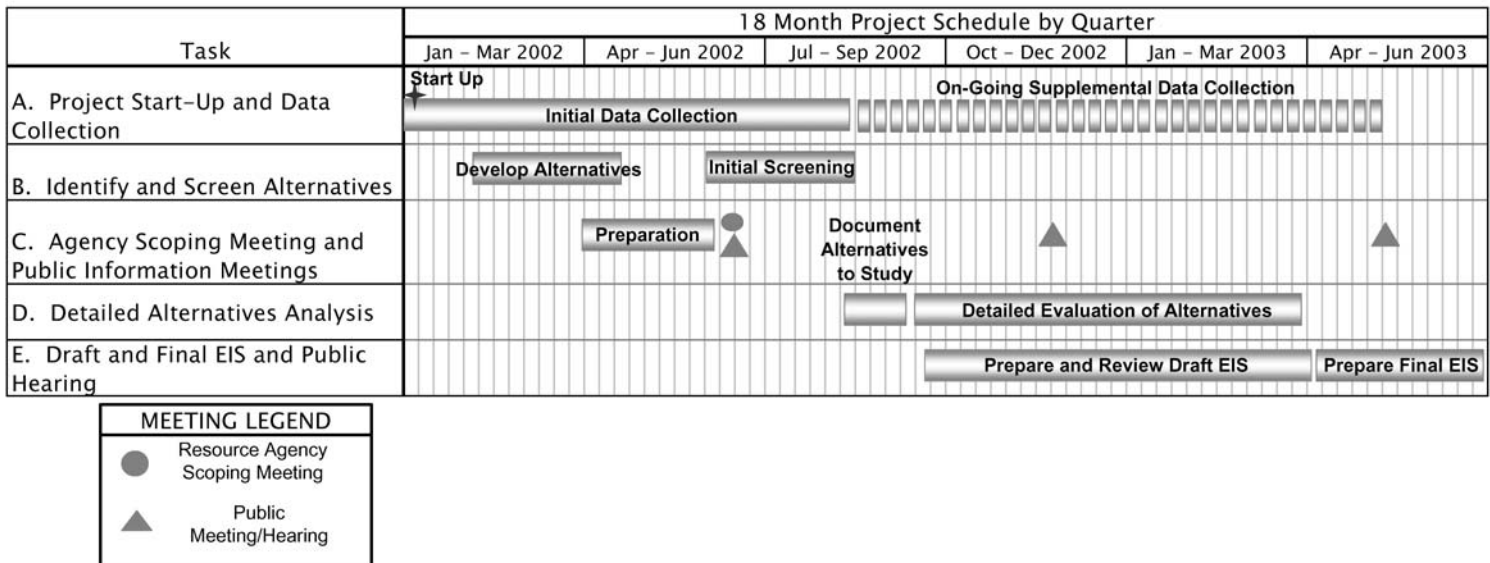


## EIS Areas of Emphasis

The most significant areas of emphasis for this EIS include evaluation of potential impacts to:

- Prime Farmland
- Irrigation Systems
- Wetlands
- Historic Structures/Cultural Resources
- Floodplains

## PROJECT SCHEDULE: NEBRASKA HIGHWAY 35 CORRIDOR STUDY AND ENVIRONMENTAL IMPACT STATEMENT



## Opportunities for Input

As shown in the schedule, public meetings will be held at three points during the next 12 or so months. To make attendance of the meetings more convenient, separate meetings (covering the same information) on the following topics will be held in Norfolk, Wayne and South Sioux City:

- Preliminary Alternatives/Project Scoping (This meeting)
- Findings of the Technical Review of the Reasonable Alternatives
- Public Hearing on Draft EIS

A project website is available for accessing information about the study and to get updates on progress. The website can be accessed through the NDOR webpage ([www.dor.state.ne.us](http://www.dor.state.ne.us)) and will include information on:

- Project Initiation/Scoping
- Initial Screening of the Alternatives
- Second Level Screening of Alternatives
- Selection of the Preferred Alternative

## Study Contacts

### URS Corporation

Bill Troe  
Project Manager  
(402) 334-8181  
12120 Shamrock Plaza  
Suite 300  
Omaha, NE 68154  
[Highway35@urscorp.com](mailto:Highway35@urscorp.com)

### NDOR

Steve McBeth, PE  
Location Engineer  
(402) 479-4417  
1500 NE Highway 2  
Lincoln, NE 68502

### Website

[www.ndor.state.ne.us](http://www.ndor.state.ne.us)