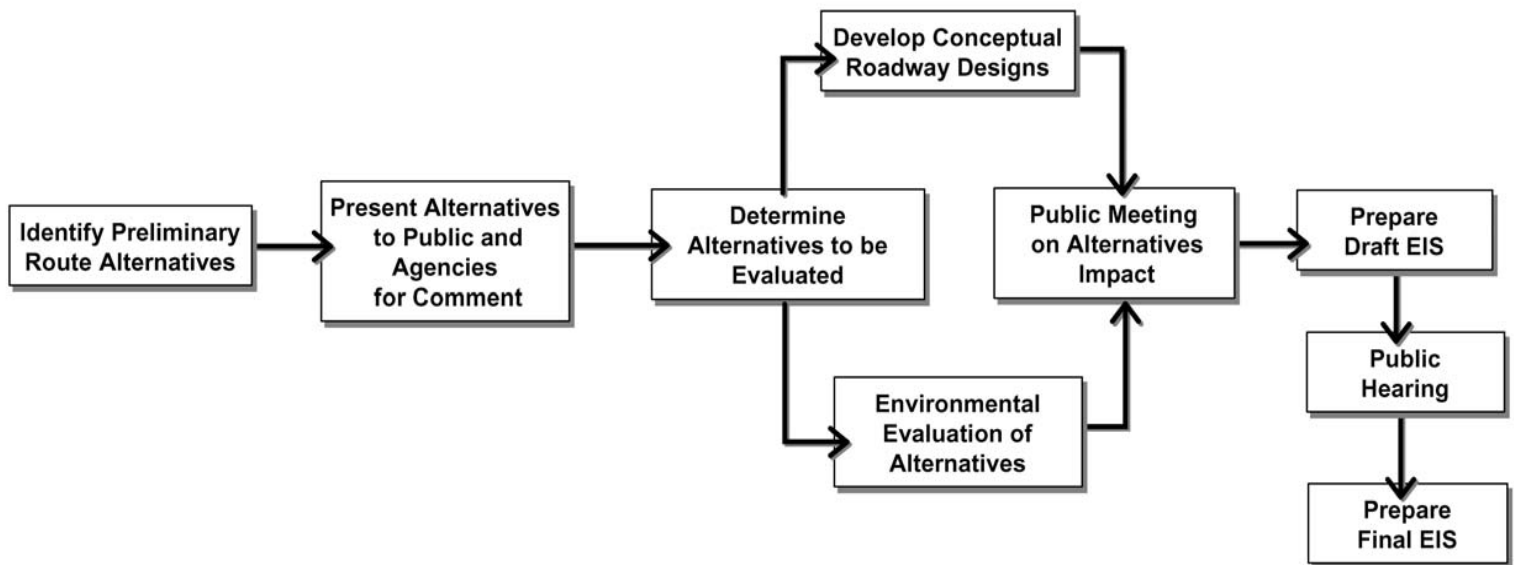


## Process Overview

Based on the findings of a feasibility study, the Nebraska Department of Roads (NDOR) recommended that a more detailed evaluation of the N-35 corridor be completed. This process would include preliminary engineering, a Federal Environmental Impact Statement (EIS), and public input.

An EIS is done to comply with the National Environmental Policy Act (NEPA) which states that an environmental analysis must be completed to determine potential impacts before federal funds can be used for a project. The flowchart below summarizes the process and shows how engineering, environmental analysis, and public input interact.



## EIS Areas of Emphasis

The most significant areas of emphasis for this EIS include evaluation of potential impacts to:

- Prime Farmland
- Irrigation Systems
- Wetlands
- Historic Structures/Cultural Resources
- Floodplains