

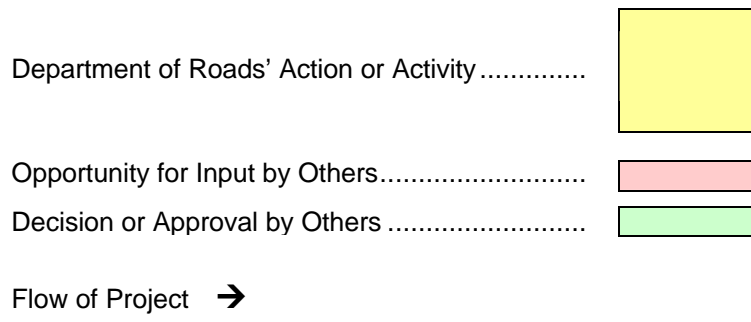
*from* **Concept**  
*to* **Construction**

**The Highway Planning  
and  
Design Process  
for the**

**Nebraska Department of Roads**

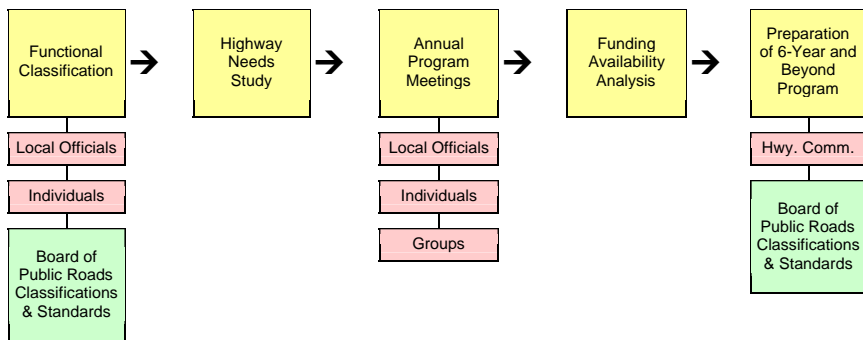
The information presented in this brochure depicts various major activities involved in the highway planning and design process. Please note, there are other activities that must occur during the many steps shown here.

Activities in the design process are depicted for projects financed entirely from state funds and projects utilizing federal funds. Attention should be given to the **footnotes** for certain activities.

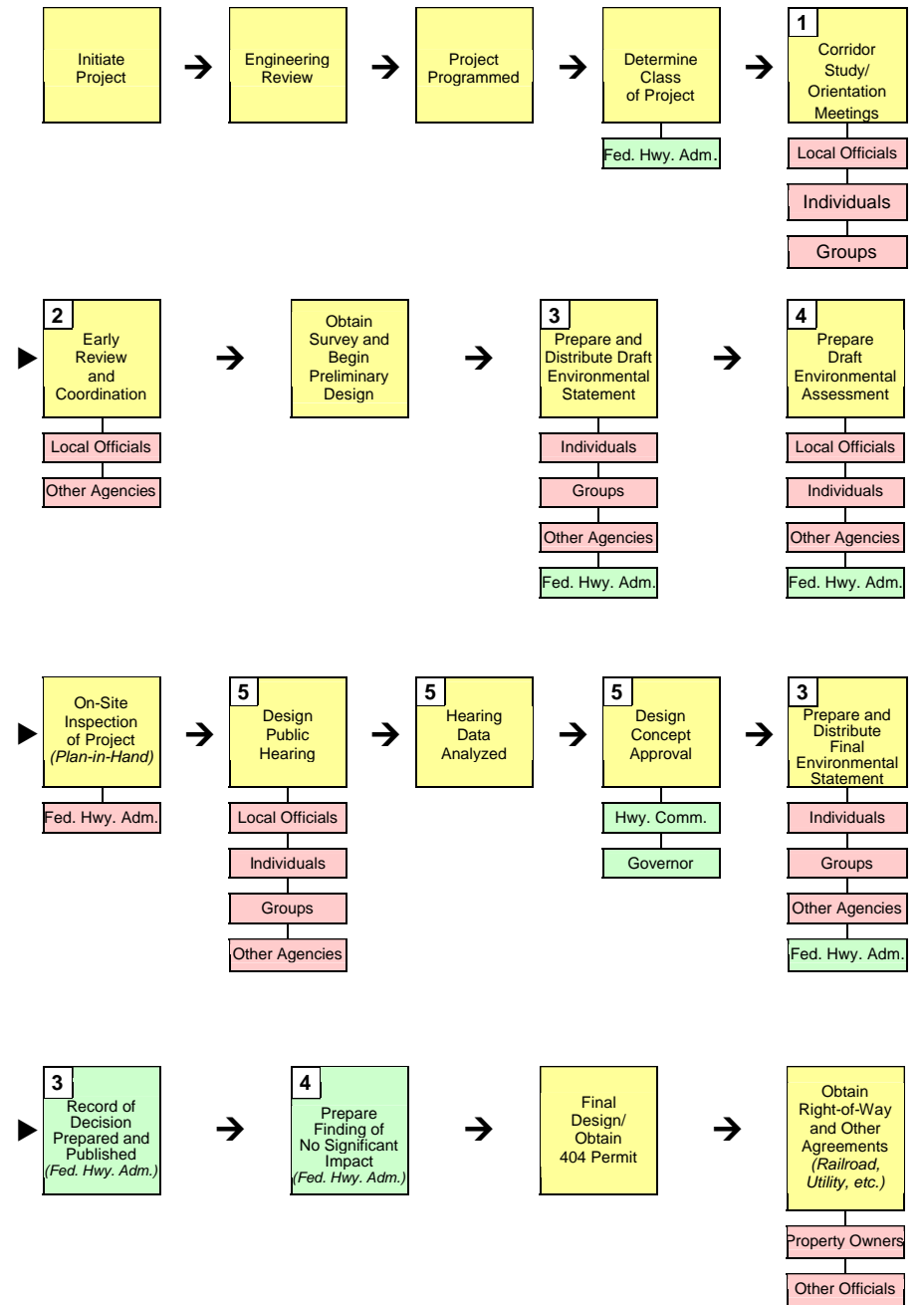


### System Planning

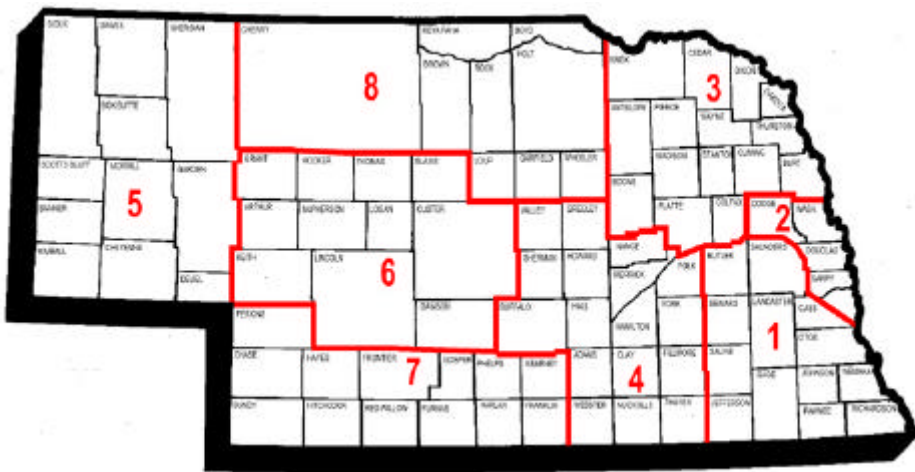
This shows the activities conducted for the State Highway System on a continuing basis.



### Activities For Federal-Aid Highway Projects

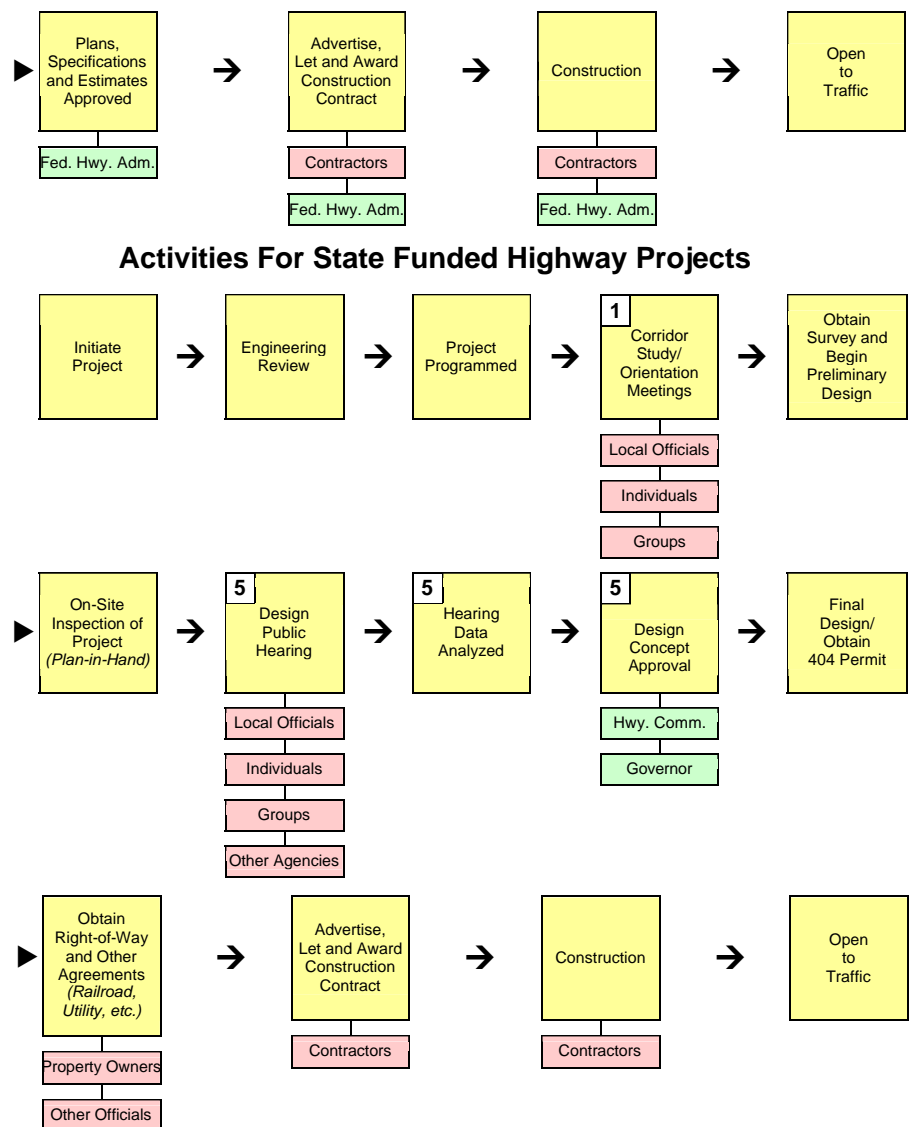


Questions or comments about the State Highway Program should be referred to the appropriate Department of Roads' District Office.



### District Offices

- |   |  |
|---|--|
| <p><b>District 1</b><br/>302 Superior St<br/>PO Box 94759<br/>Lincoln NE 68509-4759<br/>(402) 471-0850</p>          | <p><b>District 5</b><br/>514 Main St<br/>PO Box 580<br/>Bridgeport NE 69336-0580<br/>(308) 262-1920</p>          |
| <p><b>District 2</b><br/>4425 S 108<sup>th</sup> St<br/>PO Box 45461<br/>Omaha NE 68145-0461<br/>(402) 595-2534</p> | <p><b>District 6</b><br/>1321 N Jeffers St<br/>PO Box 1108<br/>North Platte NE 69103-1108<br/>(308) 535-8031</p> |
| <p><b>District 3</b><br/>408 N 13<sup>th</sup> St<br/>PO Box 1707<br/>Norfolk NE 68702-1707<br/>(402) 370-3470</p>  | <p><b>District 7</b><br/>619 Auditorium Dr<br/>PO Box 530<br/>McCook NE 69001-0530<br/>(308) 345-8490</p>        |
| <p><b>District 4</b><br/>211 N Tilden St<br/>PO Box 1488<br/>Grand Island NE 68802-1488<br/>(308) 385-6265</p>      | <p><b>District 8</b><br/>E Highway 20<br/>PO Box 66<br/>Ainsworth NE 69210-0066<br/>(402) 387-2471</p>           |



### Footnotes

- 1** This and other activities related to a new highway location may be applicable.
- 2** Applicable for Class II Environmental Action projects. Action does not have a significant effect on the environment.
- 3** Applicable for Class I Environmental Action projects. Action that may significantly affect the environment.
- 4** Applicable for Class II Environmental Action projects. Action where the significance of the impact on the environment is not clearly established.
- 5** This activity does not apply for certain reconstruction projects.