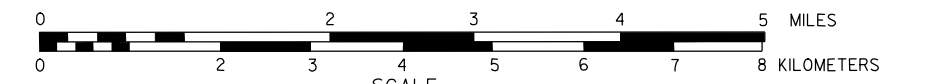


GENERAL HIGHWAY MAP WEBSTER COUNTY NEBRASKA

PREPARED BY THE
DEPARTMENT OF ROADS
INFORMATION SYSTEMS DIVISION
IN COOPERATION WITH THE
U.S. DEPARTMENT OF TRANSPORTATION
FEDERAL HIGHWAY ADMINISTRATION

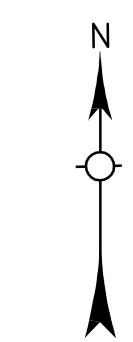
1996



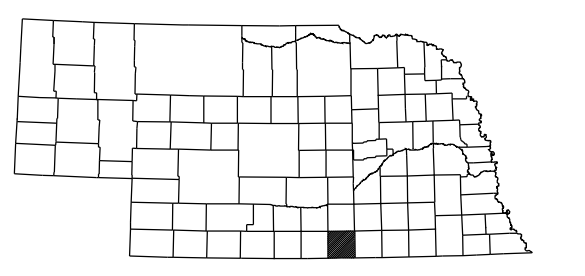
REVISION HISTORY		
NAME	DATE	REVISION
L. GOLDSMITH	OCT. 2000	911 SYSTEM
GLENN WILLIAMS	MARCH 2004	REF. POSTS

LEGEND

- | | |
|---|---|
| Primitive Road..... | Aggregate Pit..... |
| Unimproved Road..... | Agricultural Experimental Station..... |
| Gravel or Crushed Rock..... | Educational Institutions..... |
| Asphalt/Bituminous Surface..... | Public Use Area..... |
| Concrete/Brick Surface..... | Home, etc. plots, grounds, parks, etc. |
| Multiple Lane Undivided Highway..... | Recreational Facilities..... |
| Divided Highway..... | cemets. fields, cemetery club, fairgrounds, etc. |
| Interstate Highway with Full Control of Access..... | Rest Area..... |
| Side Roads and Streets..... | Ranger Station..... |
| 911 NAMED/Numbered Roads..... | Fish Hatchery..... |
| Interstate-Numbered Highway..... | Community Hall..... |
| US-Numbered Highway..... | Correctional Institution..... |
| State-Numbered Highway..... | Tourist Court or Motel..... |
| State-Numbered Highway Spur..... | Monument-Small..... |
| State-Numbered Highway Link..... | Museum..... |
| Highway Reference Post Number..... | Firestation..... |
| Interstate Exit Number..... | Courthouse..... |
| Wide Stream..... | Post Office..... |
| Narrow Stream..... | Highway Maintenance Yard..... |
| Irrigation Ditch..... | Dump Area..... |
| Reservoir, Pond or Lake..... | Sewage Disposal Plant..... |
| Reservoir, With Dam..... | Water Supply Stand Pipe..... |
| Highway Bridge-Any Type..... | Pipe Line..... |
| lower 20' spans..... | Transmission Line..... |
| Small Bridges-Closely Spaced..... | Power Plant..... |
| locations indicate bridge width..... | Power Substation..... |
| bridges are grouped..... | Radio or TV Station..... |
| General Bridge (wood, steel, concrete)..... | Pumping Station..... |
| Arch Bridge..... | Weight Station or Port of Entry..... |
| Truss Bridge..... | Commercial or Municipal Airport..... |
| Pedestrian Underpass..... | Airport with Paved Runways..... |
| Railroad Overpass..... | State Boundary..... |
| Railroad Underpass..... | County Boundary..... |
| Dam with Road on Top..... | Township Line..... |
| Cattle Guard..... | Section Line..... |
| Dwelling..... | Corporate Limit Lines..... |
| Row of Dwellings..... | Parks and Other Reservations..... |
| Cemetery..... | Boundary Limits of Area Shown in Enlargements (see enlargements for culture)..... |
| Church or Other Religious Institution..... | State Capital..... |
| Church with Cemetery Adjacent..... | County Seat..... |
| Hospital..... | Other Cities and Villages..... |
| Business..... | Incorporated City or Village..... |
| Industrial Plant..... | Triangulation Station..... |
| Filling Station..... | Points Between Which Distances Are Measured Indicated Thus..... |
| Grain Elevator..... | Latitude and Longitude..... |



LAMBERT CONFORMAL CONIC PROJECTION
1983 NORTH AMERICAN DATUM
NEBRASKA COORDINATE SYSTEM



KEY TO COUNTIES

