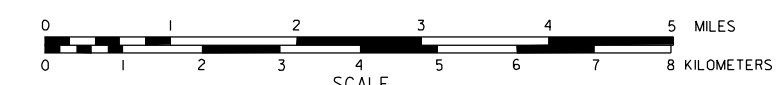


GENERAL HIGHWAY MAP VALLEY COUNTY NEBRASKA

PREPARED BY THE
DEPARTMENT OF ROADS
TRANSPORTATION PLANNING DIVISION
IN COOPERATION WITH THE
U.S. DEPARTMENT OF TRANSPORTATION
FEDERAL HIGHWAY ADMINISTRATION

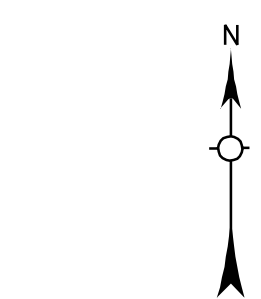
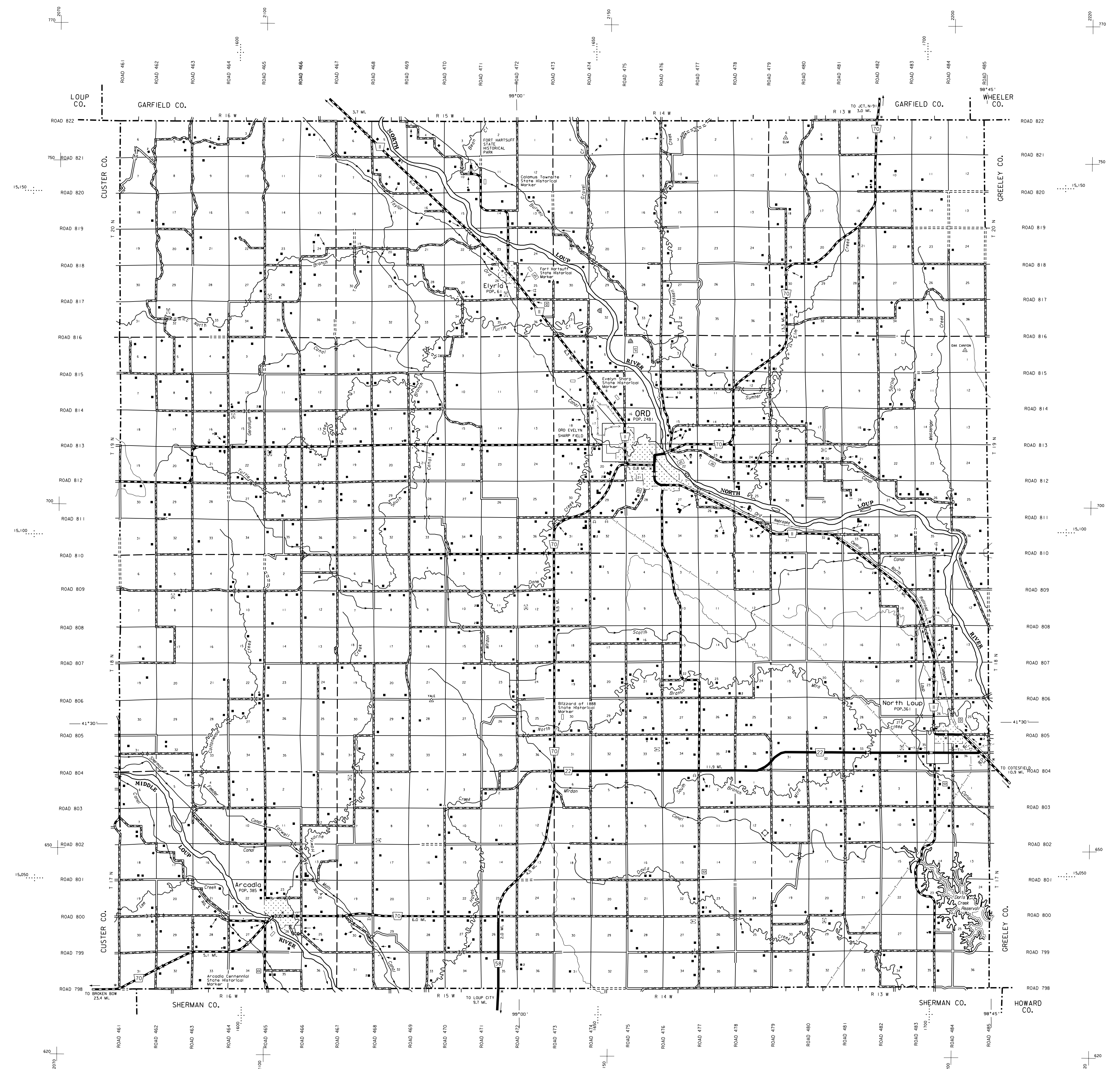
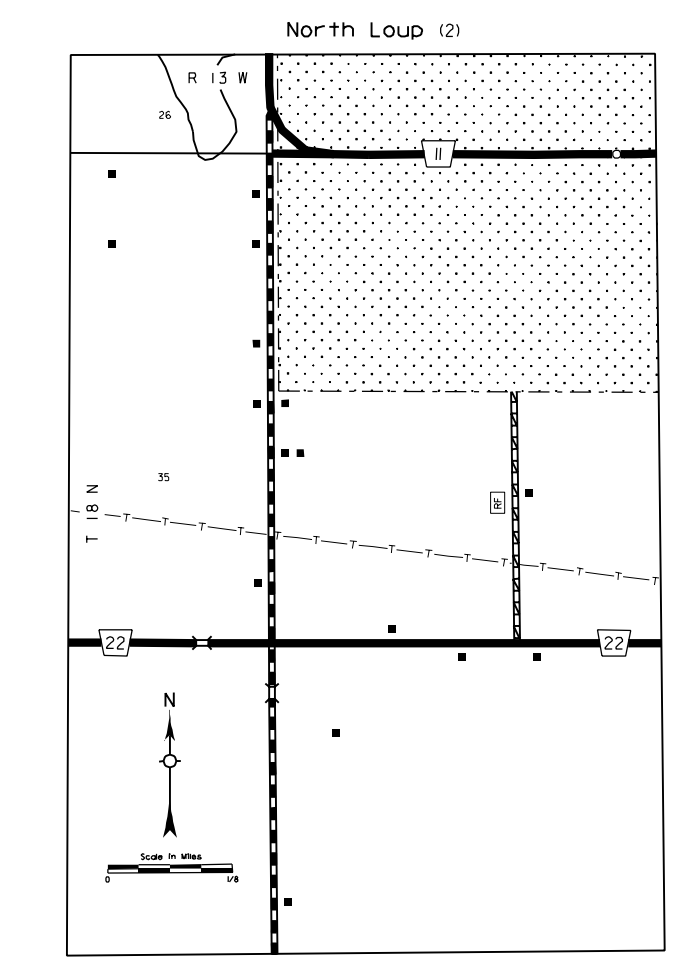
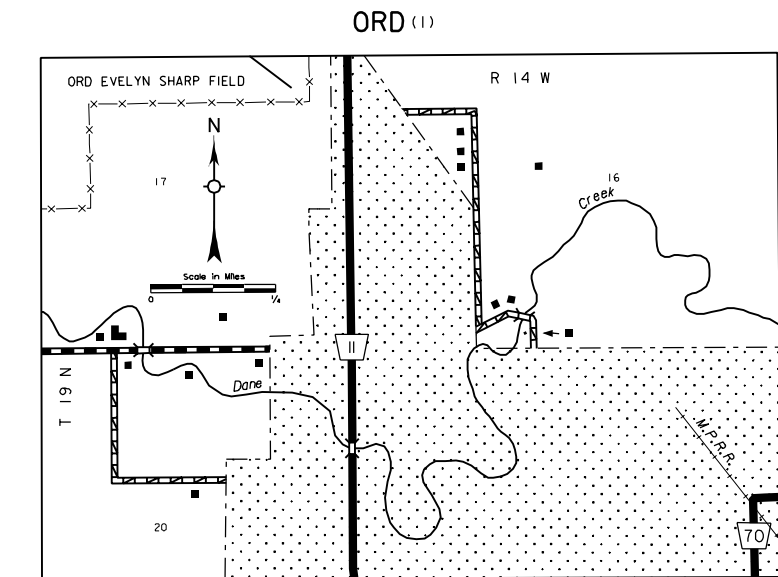
1988



REVISION HISTORY		
NAME	DATE	REVISION
L. COLDSMITH	JAN. 2001	911 SYSTEM

LEGEND

- | | |
|--|--|
| <ul style="list-style-type: none"> Primitive Road Unimproved Road Gravel or Crushed Rock Asphalt/Bituminous Surface Concrete/Bit. Surface Multiple Lane Undivided Highway Divided Highway Interstate Highway with Full Control of Access Side Roads and Streets Interstate-Numbered Highway US-Numbered Highway State-Numbered Highway State-Numbered Highway Spur Interstate Exit Number Link Wide Stream Narrow Stream Irrigation Ditch Reservoir, Pond or Lake Reservoir, With Dam Highway Bridge-Any Type Small Bridges-Closely Spaced General Bridge Arch Bridge Truss Bridge Pedestrian Overpass Railroad Overpass Railroad Underpass Railroad Dam with Road on Top Cattle Guard Dwelling Row of Dwellings Cemetery Church or Other Religious Institution Church with Cemetery Adjacent Hospital Business Industrial Plant Filling Station Grain Elevator Aggregate Pit | <ul style="list-style-type: none"> Agricultural Experimental Station Educational Institutions Public Use Area Recreational Facilities Rest Area Ranger Station Fish Hatchery Community Hall Correctional Institution Tourist Court or Motel Monument-Small Museum Firestation Courthouse Armory Post Office Highway Maintenance Yard Dump Area Sewage Disposal Plant Water Supply Stand Pipe Transmission Line Power Plant Power Substation Radio or TV Station Pumping Station Religion Station or Part of Entry Commercial or Municipal Airport Airport with Paved Runways State Boundary County Boundary Township Line Section Line Corporate Limit Lines Parks and Other Reservations Boundary Limits of Area Shown in Enclosure State Capital County Seat Other Cities and Villages Incorporated City or Village Triangulation Station Points Between Which Distances Are Measured Indicated Thus Nebraska Coordinate System Thousands of Feet |
|--|--|



LAMBERT CONFORMAL CONIC PROJECTION
1983 NORTH AMERICAN DATUM
NEBRASKA COORDINATE SYSTEM

