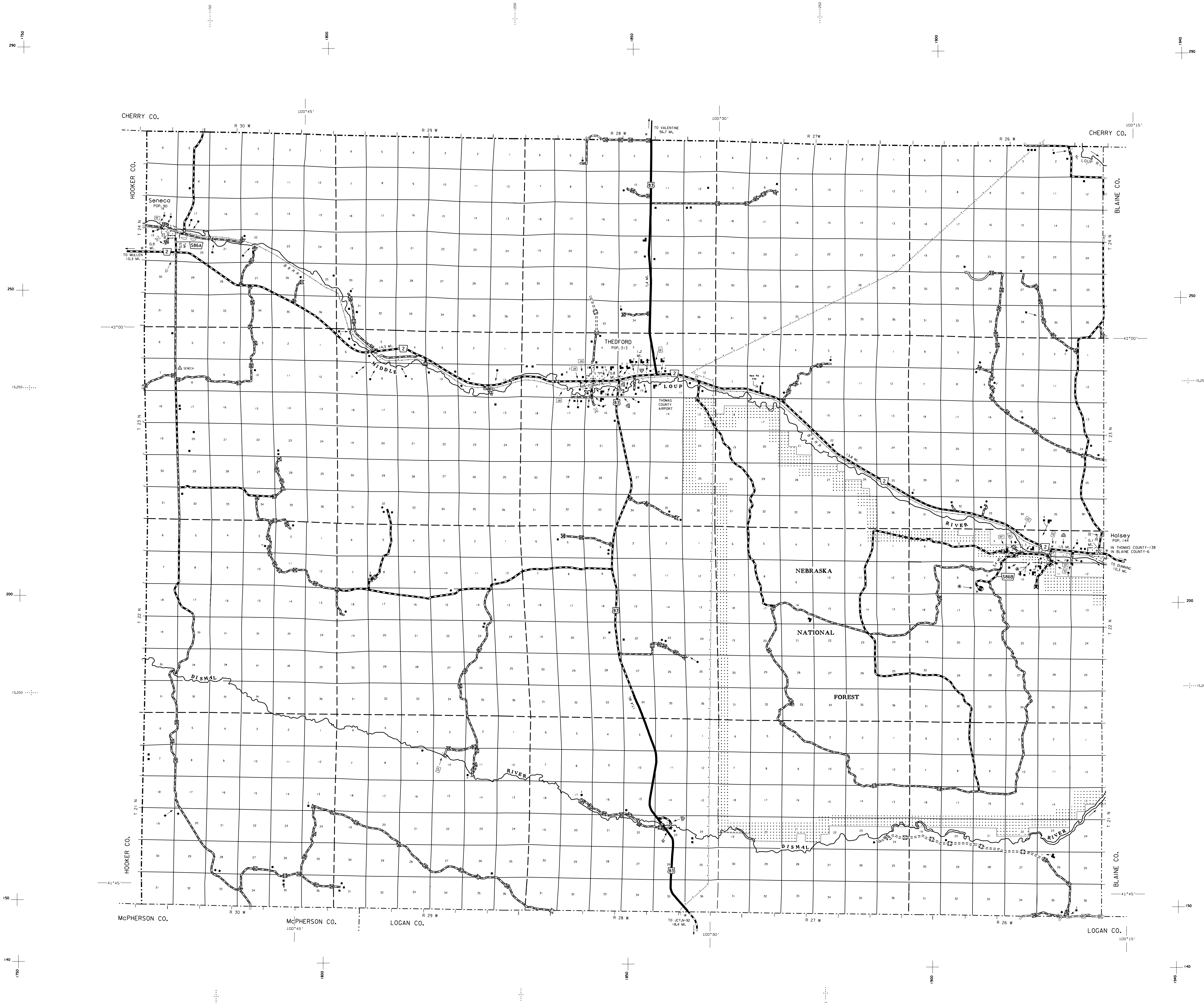
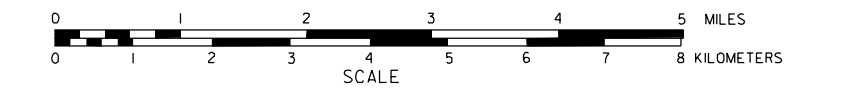


GENERAL HIGHWAY MAP THOMAS COUNTY NEBRASKA

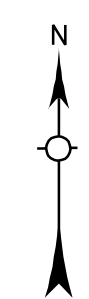
PREPARED BY THE
DEPARTMENT OF ROADS
TRANSPORTATION PLANNING DIVISION
IN COOPERATION WITH THE
U.S. DEPARTMENT OF TRANSPORTATION
FEDERAL HIGHWAY ADMINISTRATION

1985



LEGEND

- | | |
|---|--|
| Primitive Road | Public Use Area |
| Unimproved Road | Some African grass, remaining potential |
| Gravel or Crushed Rock | Recreational Facilities |
| Non Rigid Pavement (M. or ASPAL) | Domestic Field Country Club, Fairgrounds, etc. |
| Rigid Pavement (P.C.C. Asphalt or BRICK) | Rest Area |
| Multiple Lane Undivided Highway | Ranger Station |
| Divided Highway | Fish Hatchery |
| Interstate Highway with Full Control of Access | Community Hall |
| State Roads and Streets | Correctional Institution |
| Interstate-Numbered Highway | Tourist Court or Motel |
| US-Numbered Highway | Monument - Small |
| State-Numbered Highway | Museum |
| State-Numbered Highway Spur | Firestation |
| State-Numbered Highway Link | Courthouse |
| Interstate Exit Number | Armory |
| Wide Stream | Post Office |
| Narrow Stream | Highway Maintenance Yard |
| Irrigation Ditch | Dump Area |
| Reservoir, Pond or Lake | Sewage Disposal Plant |
| Highway Bridge - Any Type | Water Supply Stand Pipe |
| Small Bridges - Closely Spaced | Pipe Line - (Petroleum) |
| General Bridge (18,000 lbs. or less) - Concrete | Transmission Line |
| Arch Bridge | Power Plant |
| Truss Bridge | Power Substation |
| Pedestrian Underpass | Radio or TV Station |
| Railroad Overpass | Pumping Station |
| Railroad Underpass | Weight Station or Port of Entry |
| Railroad | Commercial or Municipal Airport |
| Dam with Road on Top | Airport with Paved Runways |
| Cattle Guard | State Boundary |
| Dwelling | County Boundary |
| Row of Dwellings | Township Line |
| Cemetery | Section Line |
| Church or Other Religious Institution | Corporate Limit Lines |
| Hospital | Parks and Other Reservations |
| Business | Boundary Limits of Area Shown in Enlargements - See enlargements for details |
| Industrial Plant | State Capital |
| Filling Station | County Seat |
| Grain Elevator | Other Cities and Villages |
| Aggregate Pit | Incorporated City or Village |
| Agricultural Experimental Station | Triangulation Station |
| Educational Institutions | Points Between Which Distances Are Measured Indicated Thus |
| | Latitude and Longitude |
| | Nebraska Coordinate System (in thousands of feet) |
| | Universal Transverse Mercator Grid (in thousands of feet) |



LAMBERT CONFORMAL CONIC PROJECTION
1927 NORTH AMERICAN DATUM
NEBRASKA COORDINATE SYSTEM-NORTH ZONE

