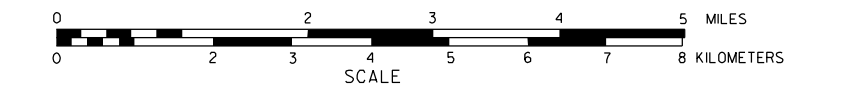


GENERAL HIGHWAY MAP STANTON COUNTY NEBRASKA

PREPARED BY THE
DEPARTMENT OF ROADS
INFORMATION SYSTEMS DIVISION
IN COOPERATION WITH THE
U.S. DEPARTMENT OF TRANSPORTATION
FEDERAL HIGHWAY ADMINISTRATION

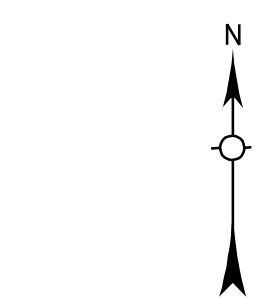
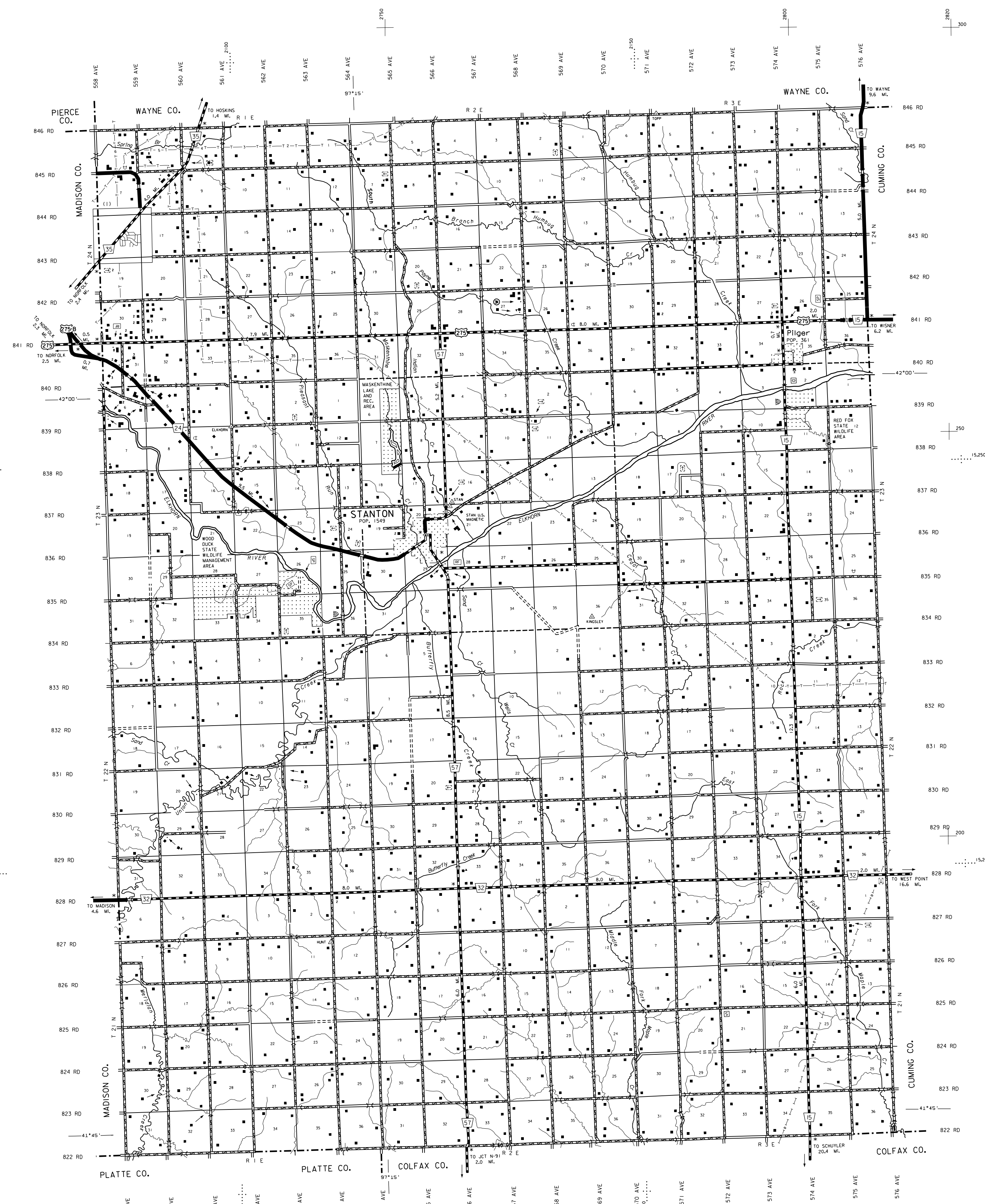
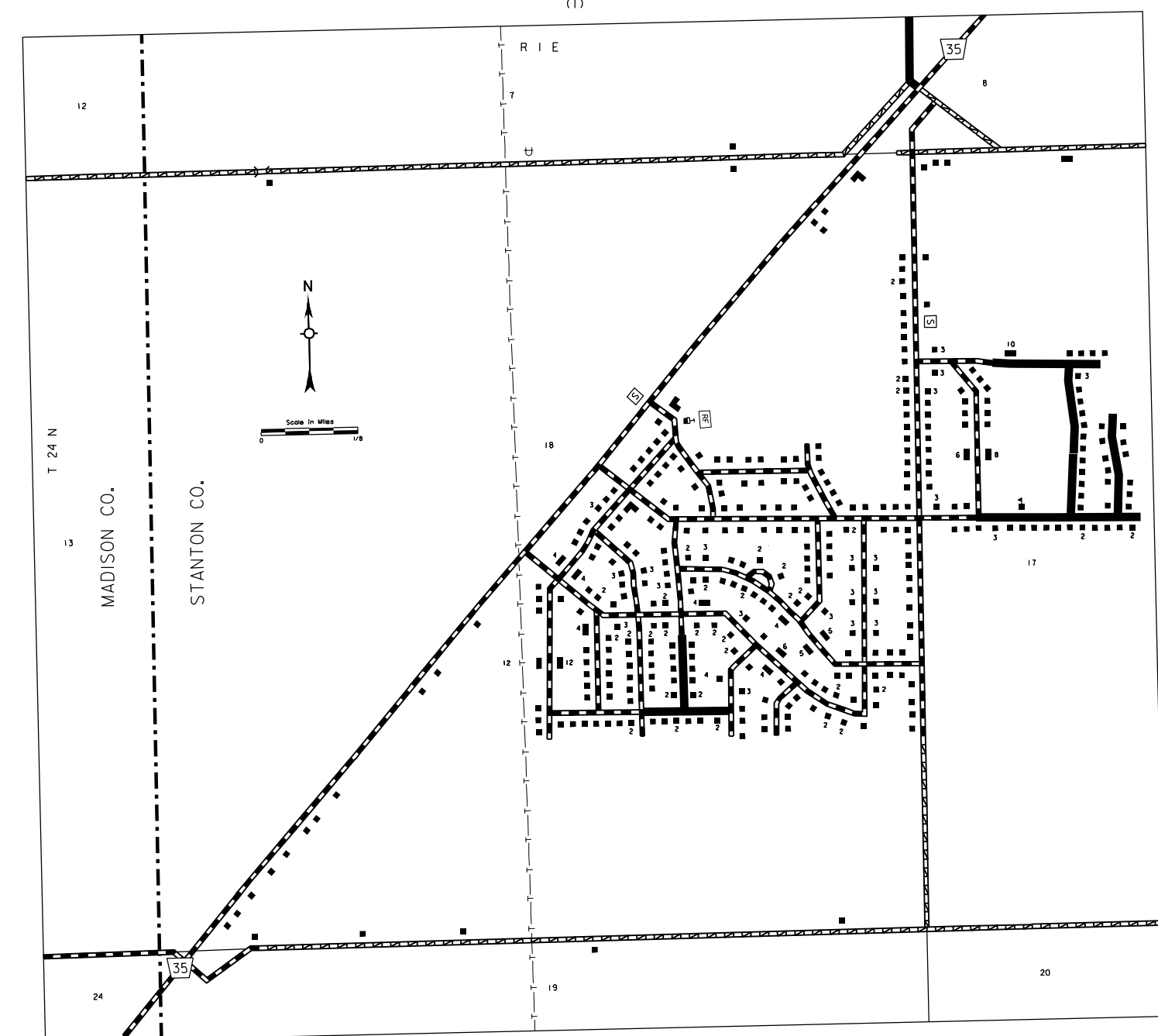
1997



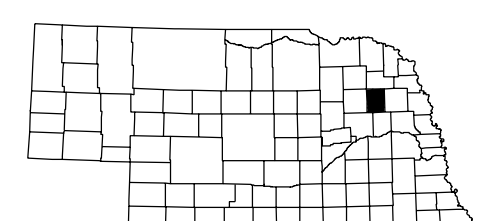
REVISION HISTORY		
NAME	DATE	REVISION
L. GOLDSMITH	JAN. 7, 2003	911 SYSTEM

LEGEND

- | | |
|--|---|
| Primitive Road | Public Use Area |
| Unimproved Road | Recreational Facilities |
| Gravel or Crushed Rock | Rest Area |
| Asphalt/Bituminous Surface | Ranger Station |
| Concrete/Brick Surface | Fish Hatchery |
| Multiple Lane Undivided Highway | Community Hall |
| Divided Highway | Correctional Institution |
| Interstate Highway with Full Control of Access | Tourist Court or Motel |
| Side Roads and Streets | Monument-Small |
| Interstate-Numbered Highway | Museum |
| US-Numbered Highway | Firestation |
| State-Numbered Highway | Courthouse |
| State-Numbered Highway Spur | Armory |
| State-Numbered Highway Link | Post Office |
| Interstate Exit Number | Highway Maintenance Yard |
| Wide Stream | Dump Area |
| Narrow Stream | Sewage Disposal Plant |
| Irrigation Ditch | Water Supply Stand Pipe |
| Reservoir, Pond or Lake | Pipe Line |
| Transmission Line | Power Plant |
| Power Substation | Radio or TV Station |
| Highway Bridge-Any Type over 20 feet | Pumping Station |
| Small Bridges-Closely Spaced, Spacings Indicate Limits within which Bridges are Graded | Weight Station or Part of Entry |
| General Bridge-Wood, Steel, Concrete | Commercial or Municipal Airport |
| Arch Bridge | Airport with Paved Runways |
| Truss Bridge | State Boundary |
| State Boundary | County Boundary |
| County Boundary | Township Line |
| Township Line | Section Line |
| Section Line | Corporate Limit Lines |
| Corporate Limit Lines | Parks and Other Reservations |
| Parks and Other Reservations | Boundary Limits of Area Shown in Enlargements-Use Arrangements for Actual |
| Boundary Limits of Area Shown in Enlargements-Use Arrangements for Actual | State Capital |
| State Capital | County Seat |
| County Seat | Other Cities and Villages |
| Other Cities and Villages | Incorporated City or Village |
| Incorporated City or Village | Triangulation Station |
| Triangulation Station | Points Between Which Distances are Measured-Indicated Thus |
| Points Between Which Distances are Measured-Indicated Thus | Latitude and Longitude |
| Latitude and Longitude | Nebraska Coordinate System (in thousands of feet) |
| Nebraska Coordinate System (in thousands of feet) | Universal Transverse Mercator Grid (in thousands of feet) |
| Universal Transverse Mercator Grid (in thousands of feet) | |



LAMBERT CONFORMAL CONIC PROJECTION
1983 NORTH AMERICAN DATUM
NEBRASKA COORDINATE SYSTEM



KEY TO COUNTIES

