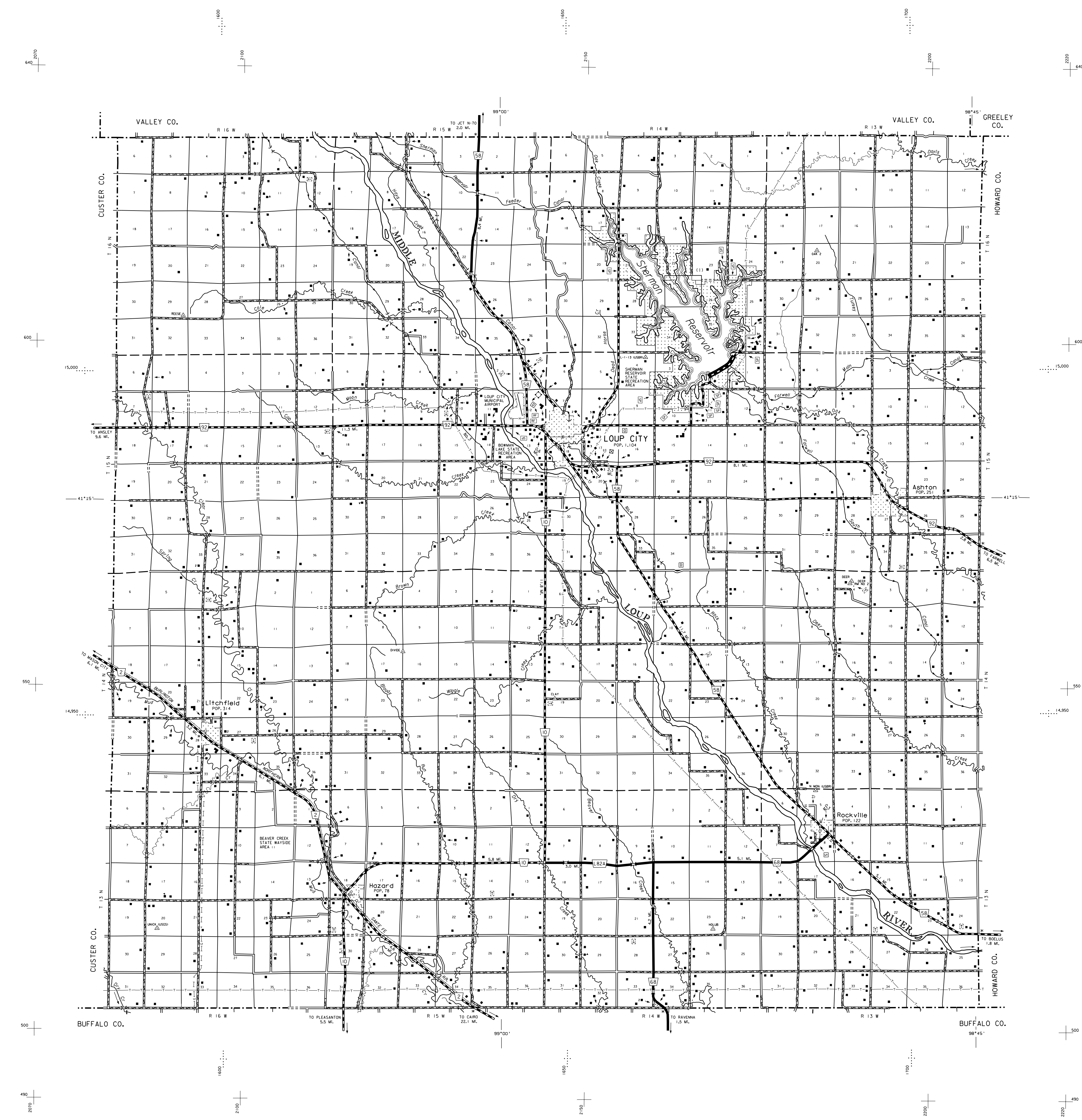
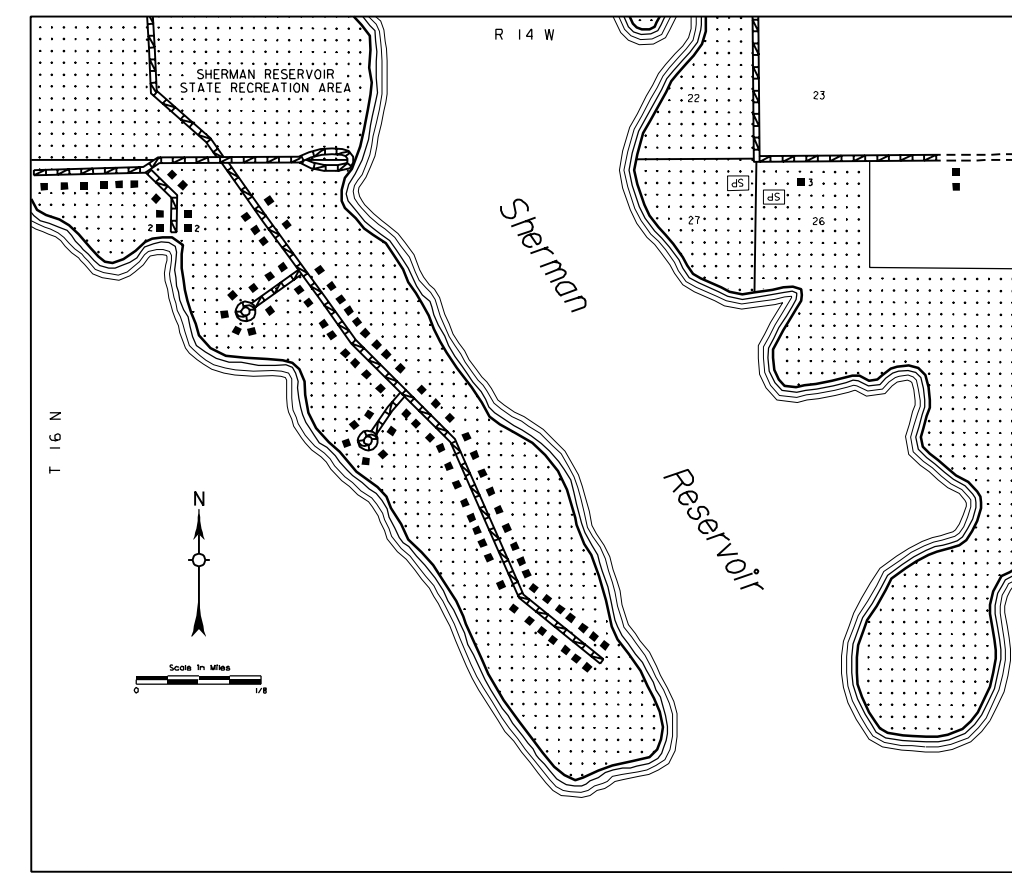
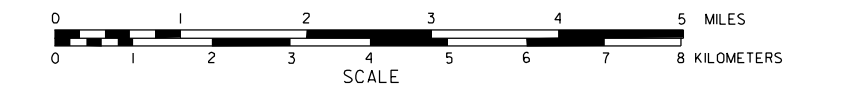


GENERAL HIGHWAY MAP SHERMAN COUNTY NEBRASKA

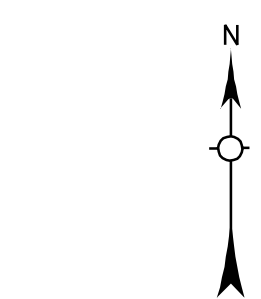
PREPARED BY THE
DEPARTMENT OF ROADS
TRANSPORTATION PLANNING DIVISION
IN COOPERATION WITH THE
U.S. DEPARTMENT OF TRANSPORTATION
FEDERAL HIGHWAY ADMINISTRATION

1988



LEGEND

- | | | | |
|---|-------|--|---|
| Primitive Road | ----- | Agricultural Experimental Station | ▲ |
| Unimproved Road | ----- | Educational Institutions | ▣ |
| Gravel or Crushed Rock | ----- | Public Use Area | ▣ |
| Asphalt/Bituminous Surface | ----- | Public Use Area (see also public grounds, swimming pools, etc.) | ▣ |
| Concrete/Brick Surface | ----- | Recreational Facilities | ▣ |
| Multiple Lane Undivided Highway | ----- | Rest Area | ★ |
| Divided Highway | ----- | Ranger Station | ▲ |
| Interstate Highway with Full Control of Access | ----- | Fish Hatchery | ▲ |
| Side Roads and Streets | ----- | Community Hall | ▲ |
| Interstate-Numbered Highway | ----- | Correctional Institution | ▲ |
| US-Numbered Highway | ----- | Tourist Court or Motel | ▲ |
| State-Numbered Highway | ----- | Monument-Small | ▲ |
| State-Numbered Highway Spur | ----- | Museum | ▲ |
| State-Numbered Highway Link | ----- | Firestation | ▲ |
| Interstate Exit Number | ----- | Courthouse | ▲ |
| Wide Stream | ----- | Armory | ▲ |
| Narrow Stream | ----- | Post Office | ▲ |
| Irrigation Ditch | ----- | Highway Maintenance Yard | ▲ |
| Reservoir, Pond or Lake | ----- | Bump Area | ▲ |
| Reservoir, With Dam | ----- | Sewage Disposal Plant | ▲ |
| Highway Bridge-Any Type, lower 20' span | ----- | Water Supply Stand Pipe | ▲ |
| Small Bridges-Closely Spaced, (distances indicate spans within which bridges are grouped) | ----- | Pipe Line - (see also 100' and 150' lines) | ▲ |
| General Bridge (wood, steel, concrete) | ----- | Transmission Line | ▲ |
| Arch Bridge | ----- | Power Plant | ▲ |
| Truss Bridge | ----- | Power Substation | ▲ |
| Pedestrian Underpass | ----- | Radio or TV Station | ▲ |
| Pedestrian Overpass | ----- | Pumping Station | ▲ |
| Railroad Overpass | ----- | Weight Station or Point of Entry | ▲ |
| Railroad Underpass | ----- | Commercial or Municipal Airport | ▲ |
| Dam with Road on Top | ----- | Airport with Paved Runways | ▲ |
| Cattle Guard | ----- | State Boundary | ▲ |
| Dwelling | ----- | County Boundary | ▲ |
| Row of Dwellings | ----- | Township Line | ▲ |
| Cemetery | ----- | Section Line | ▲ |
| Church or Other Religious Institution | ----- | Corporate Limit Lines | ▲ |
| Church with Cemetery Adjacent | ----- | Parks and Other Reservations | ▲ |
| Hospital | ----- | Boundary Limits of Area Shown in Enlargements (see enlargements for details) | ▲ |
| Business | ----- | State Capitol | ▲ |
| Industrial Plant | ----- | County Seat | ▲ |
| Filling Station | ----- | Other Cities and Villages | ▲ |
| Grain Elevator | ----- | Incorporated City or Village | ▲ |
| Aggregate Pit | ----- | Triangulation Station | ▲ |
| | | Points Between Which Distances Are Measured Indicated Thus | ▲ |
| | | Nebraska Coordinate System in thousands of feet | ▲ |



LAMBERT CONFORMAL CONIC PROJECTION
1983 NORTH AMERICAN DATUM
NEBRASKA COORDINATE SYSTEM

