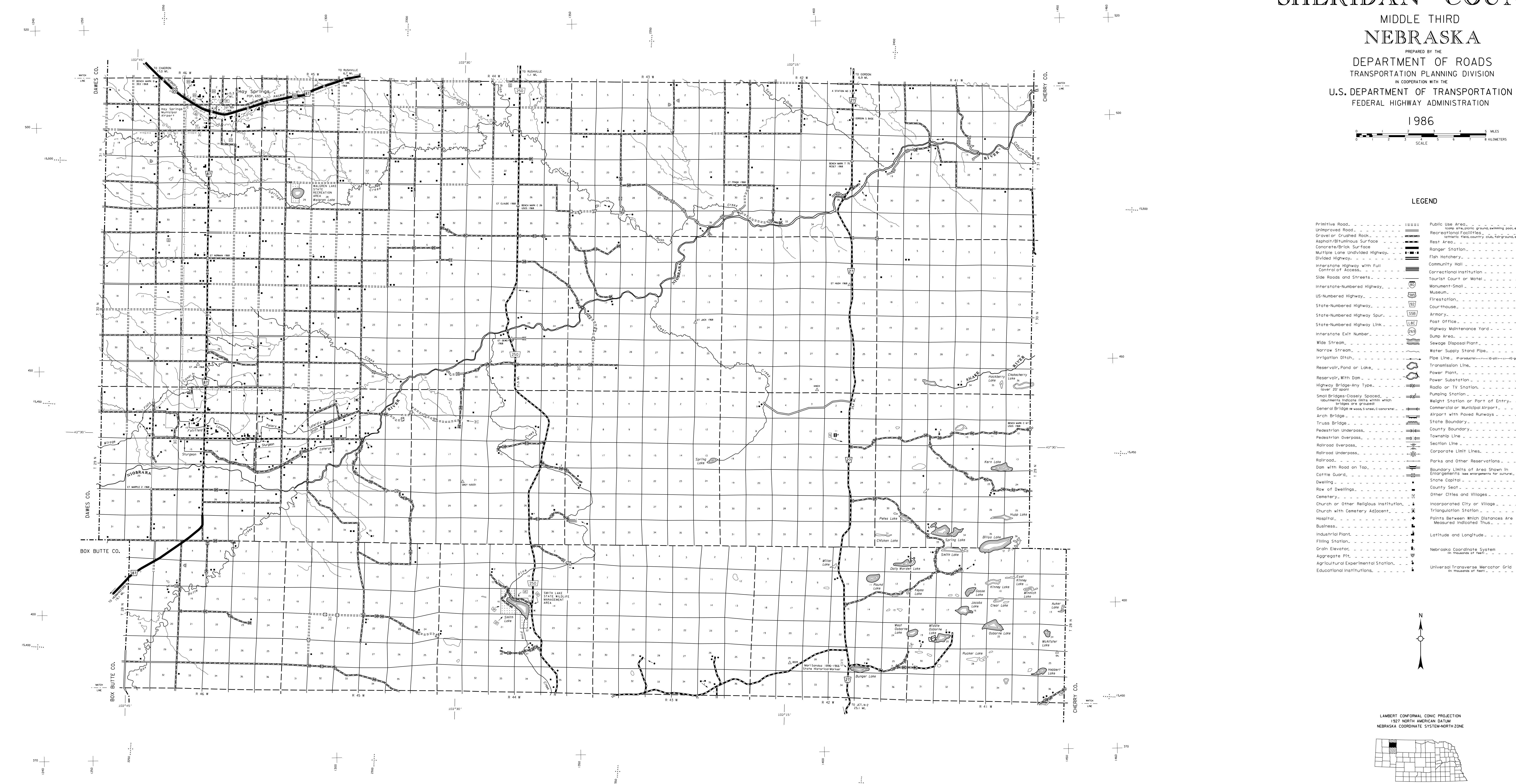


# GENERAL HIGHWAY MAP SHERIDAN COUNTY MIDDLE THIRD NEBRASKA

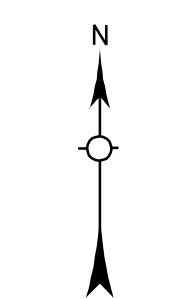
PREPARED BY THE  
DEPARTMENT OF ROADS  
TRANSPORTATION PLANNING DIVISION  
IN COOPERATION WITH THE  
U.S. DEPARTMENT OF TRANSPORTATION  
FEDERAL HIGHWAY ADMINISTRATION

1986

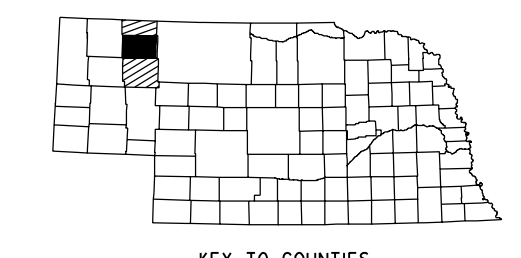


### LEGEND

- |  |   |
|--|---|
| Primitive Road   | Public Use Area   |
| Unimproved Road  | Recreational Facilities   |
| Gravel or Crushed Rock   | Rest Area   |
| Asphalt/Bituminous Surface   | Ranger Station  |
| Concrete/Brick Surface   | Fish Hatchery   |
| Multiple Lane Undivided Highway  | Community Hall  |
| Divided Highway  | Correctional Institution  |
| Interstate Highway with Full Control of Access                                 | Tourist Court or Motel  |
| Side Roads and Streets   | Monument-Small  |
| Interstate-Numbered Highway  | Museum  |
| US-Numbered Highway  | Firestation   |
| State-Numbered Highway   | Courthouse  |
| State-Numbered Highway Spur  | Armory  |
| State-Numbered Highway Link  | Post Office   |
| Interstate Exit Number   | Highway Maintenance Yard  |
| Wide Stream  | Dump Area   |
| Narrow Stream  | Sewage Disposal Plant   |
| Irrigation Ditch   | Water Supply Stand Pipe   |
| Reservoir, Pond or Lake  | Transmission Line   |
| Reservoir, With Dam  | Power Plant   |
| Highway Bridge-Army Type, lower 20' span                                       | Power Substation  |
| Small Bridge-Closely Spaced, layouts indicate extra within bridges are grouted | Radio or TV Station   |
| General Bridge-wood, steel, concrete   | Pumping Station   |
| Arch Bridge  | Weight Station or Port of Entry   |
| Truss Bridge   | Commercial or Municipal Airport   |
| Pedestrian Overpass  | Airport with Paved Runways  |
| Railroad Underpass   | State Boundary  |
| Railroad   | County Boundary   |
| Dam with Road on Top   | Township Line   |
| Cattle Guard   | Corporate Limit Lines   |
| Dwelling   | Parks and Other Reservations  |
| Row of Dwellings   | Boundary Limits of Area Shown in Entire Quarter's Use Arrangements for Survey |
| Cemetery   | State Capital   |
| Church or Other Religious Institution  | County Seat   |
| Church with Cemetery Adjacent  | Other Cities and Villages   |
| Hospital   | Incorporated City or Village  |
| Business   | Triangulation Station   |
| Industrial Plant   | Points Between Which Distances Are Measured Indicated Thus                    |
| Filling Station  | Latitude and Longitude  |
| Grain Elevator   | Nebraska Coordinate System in Thousands of Feet                               |
| Aggregate Pit  |   |
| Agricultural Experimental Station  |   |
| Educational Institutions   |   |



LAMBERT CONFORMAL CONIC PROJECTION  
1927 NORTH AMERICAN DATUM  
NEBRASKA COORDINATE SYSTEM-NORTH ZONE



KEY TO COUNTIES  
MIDDLE THIRD