

GENERAL HIGHWAY MAP SARPY COUNTY NEBRASKA

PREPARED BY THE
DEPARTMENT OF ROADS
TRANSPORTATION PLANNING DIVISION

IN COOPERATION WITH THE
U.S. DEPARTMENT OF TRANSPORTATION
FEDERAL HIGHWAY ADMINISTRATION

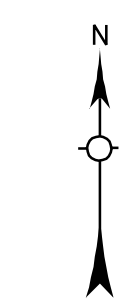
1985



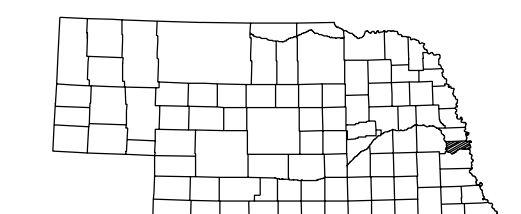
REVISION HISTORY		
NAME	DATE	REVISION
L. COLDSMITH	OCT. 2000	BIT SYSTEM

LEGEND

- | | |
|--|--|
| Primitive Road | Public Use Area |
| Unimproved Road | Recreational Facilities |
| Gravel or Crushed Rock | Rest Area |
| Non Rigid Pavement | Ranger Station |
| Rigid Pavement | Fish Hatchery |
| Multiple Lane Undivided Highway | Community Hall |
| Divided Highway | Correctional Institution |
| Interstate Highway with Full Control of Access | Tourist Court or Motel |
| Side Roads and Streets | Monument-Small |
| Interstate-Numbered Highway | Museum |
| US-Numbered Highway | Firestation |
| State-Numbered Highway | Courthouse |
| State-Numbered Highway Spur | Armory |
| State-Numbered Highway Link | Post Office |
| Interstate Exit Number | Highway Maintenance Yard |
| Wide Stream | Dump Area |
| Narrow Stream | Sewage Disposal Plant |
| Irrigation Ditch | Water Supply Stand Pipe |
| Pipe Line | Transmission Line |
| Reservoir, Pond or Lake | Power Plant |
| Reservoir, With Dam | Power Substation |
| Highway Bridge-Any Type | Radio or TV Station |
| Small Bridges-Closely Spaced | Pumping Station |
| Subments Indicate Bents within which Bridges are Grouped | Weight Station or Part of Entry |
| General Bridge | Commercial or Municipal Airport |
| Arch Bridge | Airport with Paved Runways |
| Truss Bridge | State Boundary |
| Pedestrian Underpass | County Boundary |
| Pedestrian Overpass | Township Line |
| Railroad Overpass | Section Line |
| Railroad Underpass | Corporate Limit Lines |
| Railroad | Parks and Other Reservations |
| Dam with Road on Top | Boundary Limits of Area Shown in Enlargements (see enlargements for details) |
| Cattle Guard | State Capital |
| Dwelling | County Seat |
| Row of Dwellings | Other Cities and Villages |
| Cemetery | Incorporated City or Village |
| Church or Other Religious Institution | Triangulation Station |
| Church with Cemetery Adjacent | Points Between which Distances are Measured Indicated Thus |
| Hospital | Latitude and Longitude |
| Business | Nebraska Coordinate System |
| Industrial Plant | in Thousands of Feet |
| Filling Station | Universal Transverse Mercator Grid |
| Grain Elevator | in Thousands of Feet |
| Aggregate Pit | |
| Agricultural Experimental Station | |
| Educational Institutions | |



LAMBERT CONFORMAL CONIC PROJECTION
1927 NORTH AMERICAN DATUM
NEBRASKA COORDINATE SYSTEM-SOUTH ZONE



KEY TO COUNTIES

