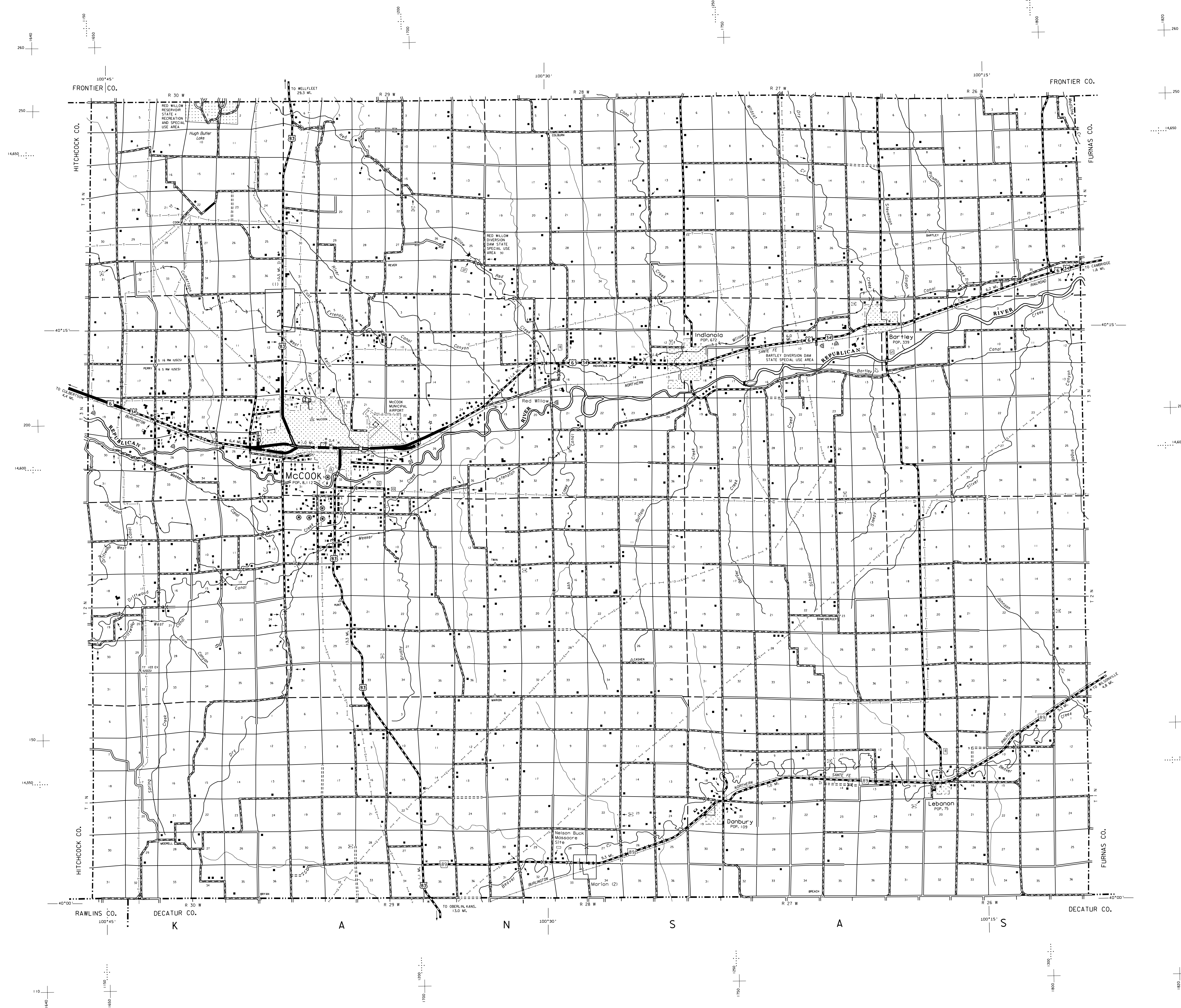
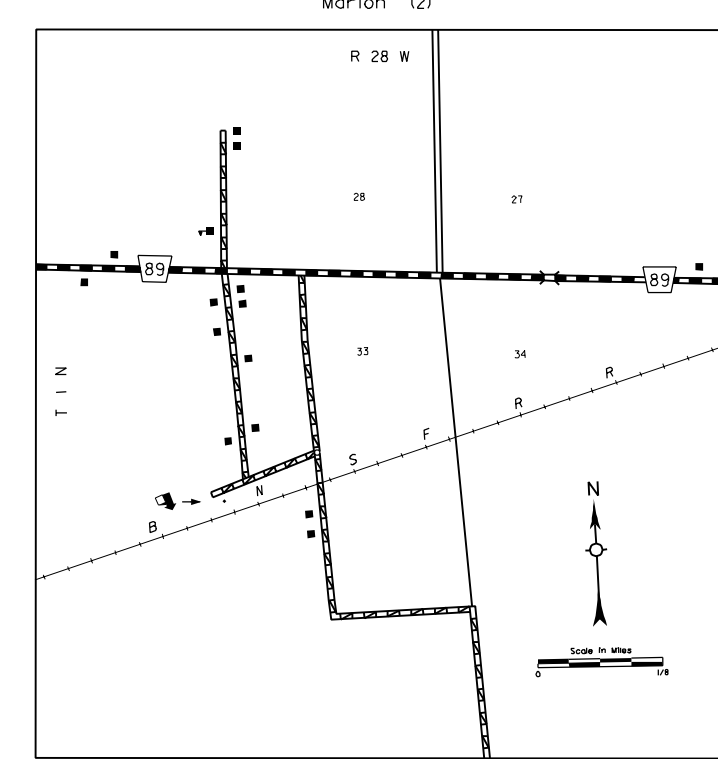
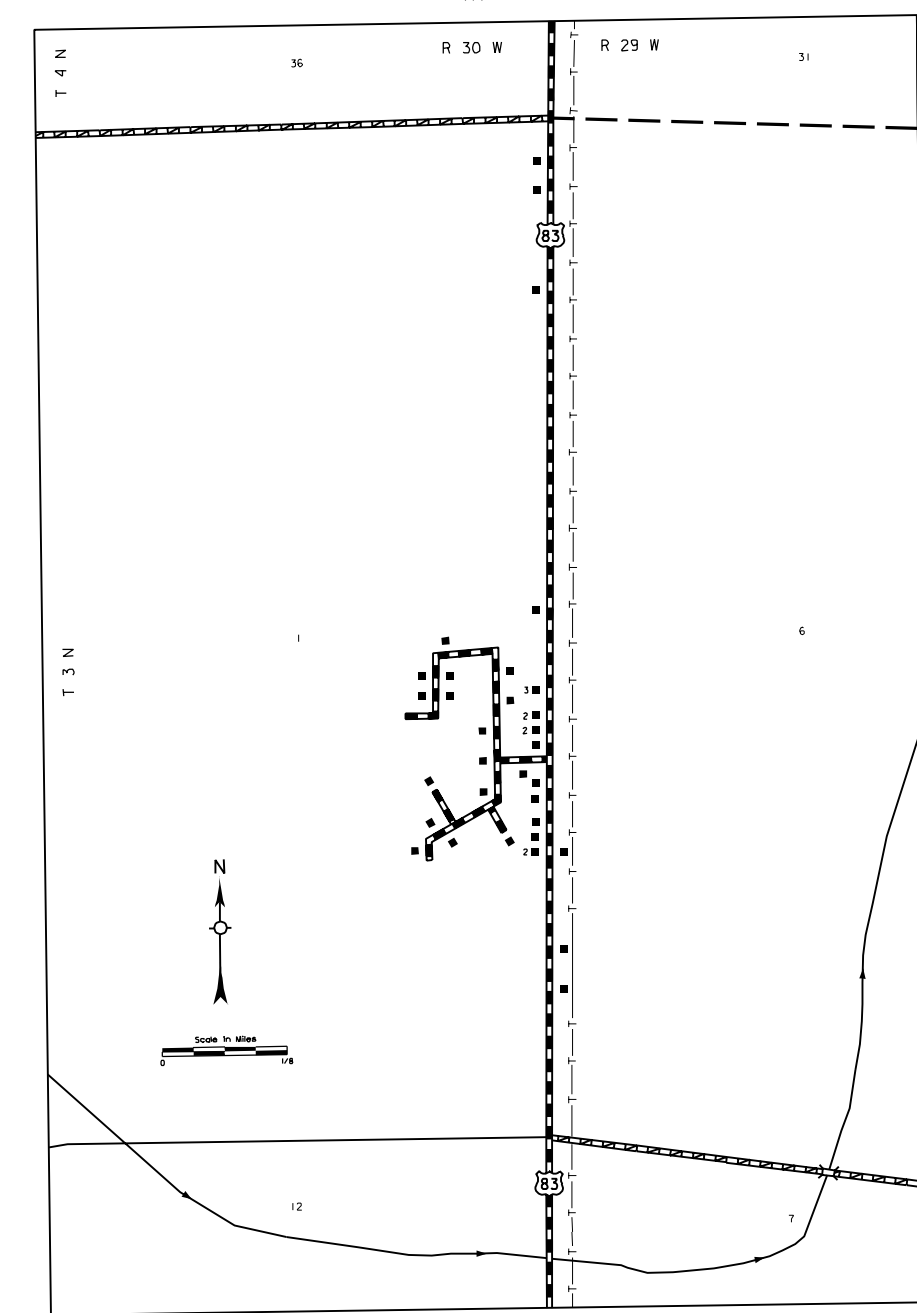


GENERAL HIGHWAY MAP RED WILLOW COUNTY NEBRASKA

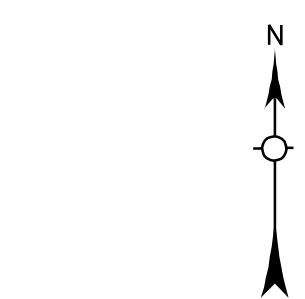
PREPARED BY THE
DEPARTMENT OF ROADS
TRANSPORTATION PLANNING DIVISION
IN COOPERATION WITH THE
U.S. DEPARTMENT OF TRANSPORTATION
FEDERAL HIGHWAY ADMINISTRATION

1996



LEGEND

- | | |
|----------------------------------------------------------|-------------------------------------------------------------------------------|
| Primitive Road | Public Use Area |
| Unimproved Road | Recreational Facilities |
| Gravel or Crushed Rock | Rest Areas |
| Asphalt/Bituminous Surface | Ranger Station |
| Concrete/Brick Surface | Flat Hatchery |
| Multiple Lane Undivided Highway | Community Hall |
| Divided Highway | Correctional Institution |
| Interstate Highway with Full Control of Access | Tourist Court or Motel |
| State-Numbered Highway | Monument-Small |
| State-Numbered Highway Spur | Museum |
| Interstate Exit Number | Courthouse |
| Wide Stream | Post Office |
| Narrow Stream | Highway Maintenance Yard |
| Irrigation Ditch | Dump Area |
| Reservoir, Pond or Lake | Sewage Disposal Plant |
| Reservoir, With Dam | Water Supply Stand Pipe |
| Highway Bridge-Any Type, Over 20' span | Pipe Line |
| Small Bridges-Closely Spaced, Spacing Indicated by Lines | Transmission Line |
| General Bridge | Power Plant |
| Arch Bridge | Power Substation |
| Truss Bridge | Radio or TV Station |
| Pedestrian Underpass | Pumping Station |
| Pedestrian Overpass | Weight Station or Port of Entry |
| Railroad Overpass | Commercial or Municipal Airport |
| Railroad Underpass | Airport with Paved Runways |
| Dam with Road on Top | State Boundary |
| Carrie Guard | County Boundary |
| Dwelling | Township Line |
| Row of Dwellings | Section Line |
| Cemetery | Corporate Limit Lines |
| Church or Other Religious Institution | Parks and Other Reservations |
| Church with Cemetery Adjacent | Boundary Limits of Area Shown in Enlargements (See Enlargements for Cultural) |
| Hospital | State Capital |
| Business | County Seat |
| Industrial Plant | Other Cities and Villages |
| Filling Station | Incorporated City or Village |
| Grain Elevator | Triangulation Station |
| Aggregate Pit | Points Between Which Distances Are Measured Indicated Thus |
| Agricultural Experimental Station | Latitude and Longitude |
| Educational Institutions | Nebraska Coordinate System (in thousands of feet) |
| | Universal Transverse Mercator Grid (in thousands of feet) |



LAMBERT CONFORMAL CONIC PROJECTION
1927 NORTH AMERICAN DATUM
NEBRASKA COORDINATE SYSTEM-SOUTH ZONE

