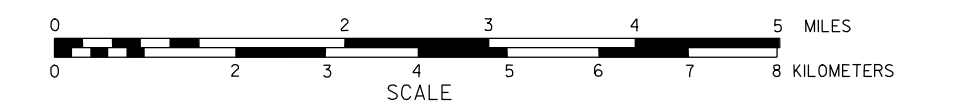


GENERAL HIGHWAY MAP NEMAHA COUNTY NEBRASKA

PREPARED BY THE
DEPARTMENT OF ROADS
INFORMATION SYSTEMS DIVISION
IN COOPERATION WITH THE
U.S. DEPARTMENT OF TRANSPORTATION
FEDERAL HIGHWAY ADMINISTRATION

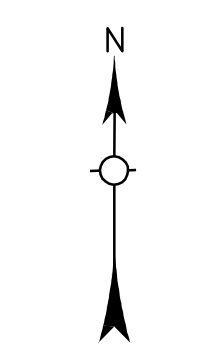
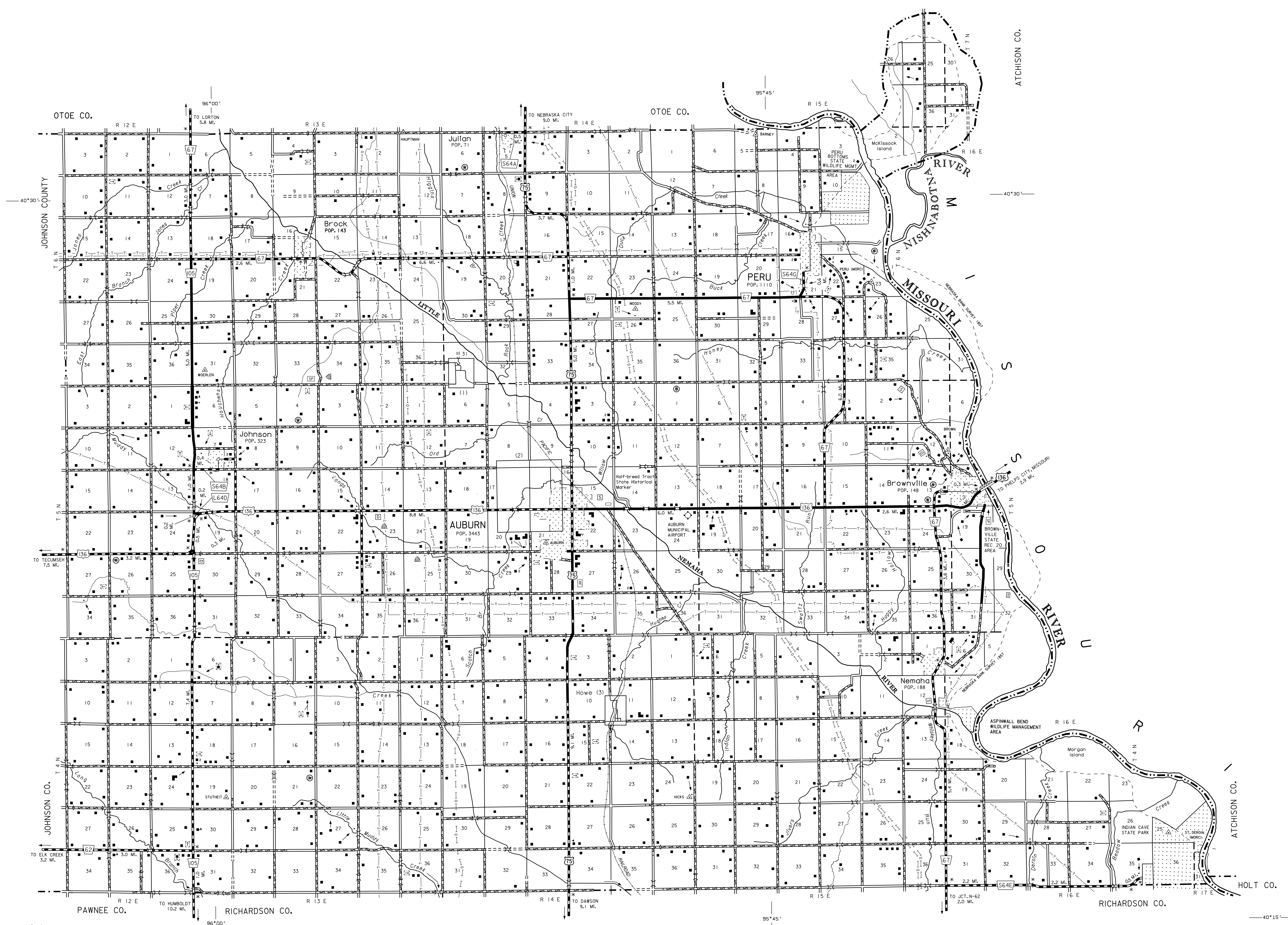
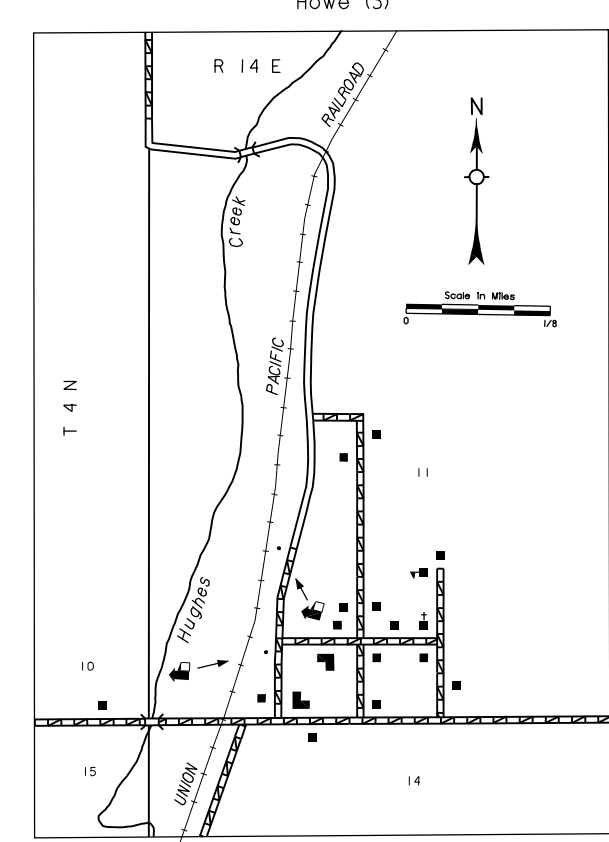
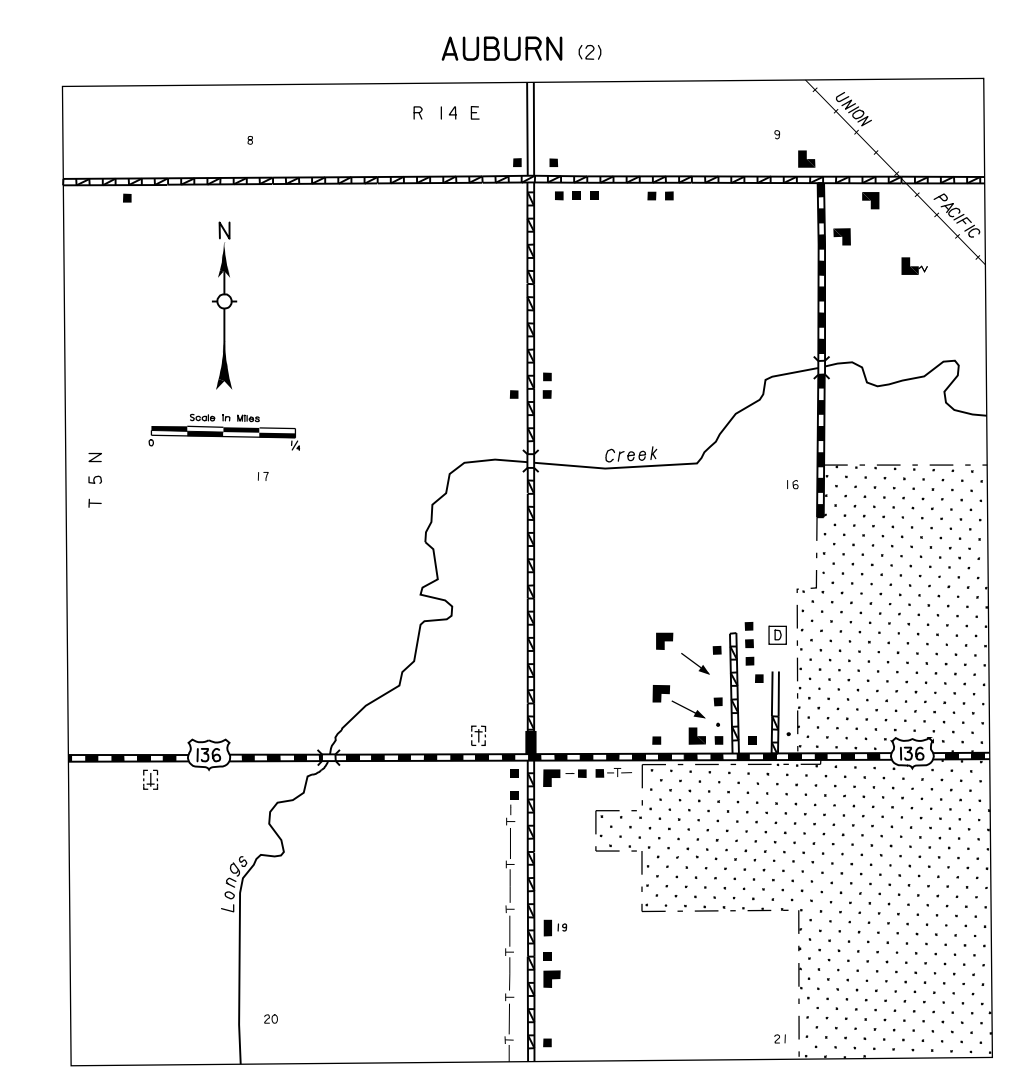
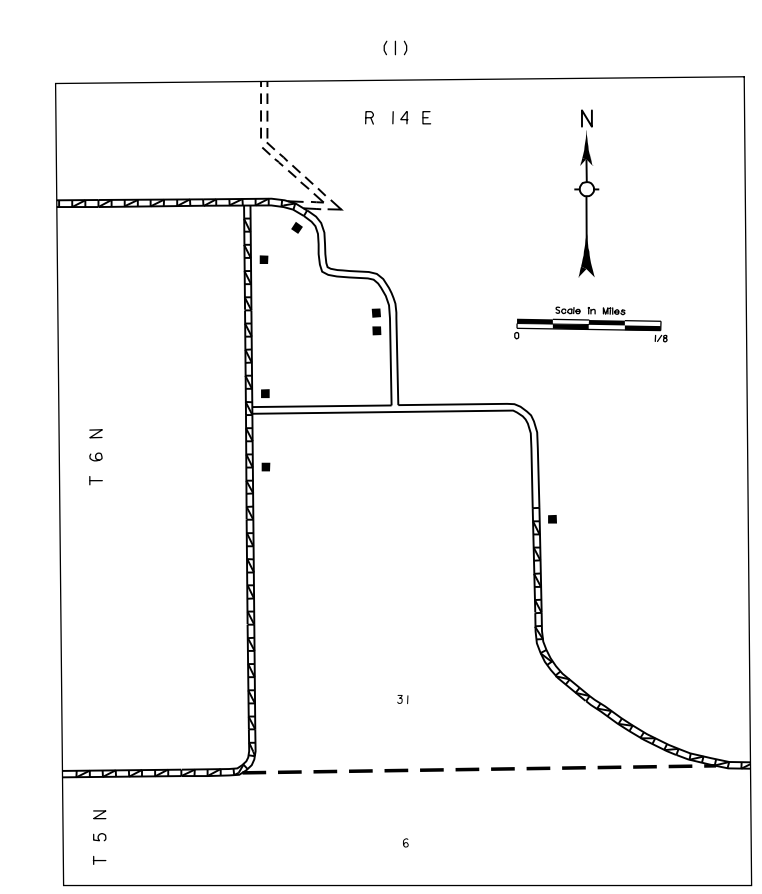
1983



REVISION HISTORY		
NAME	DATE	REVISION
GLENN WILLIAMS	AUGUST 2002	PERU BOTTOMS WMA

LEGEND

- | | |
|--|--|
| Primitive Road..... | Public Use Area..... |
| Unimproved Road..... | Recreational Facilities..... |
| Gravel or Crushed Rock..... | Rest Area..... |
| Asphalt/Bituminous Surface..... | Ranger Station..... |
| Concrete/Brick Surface..... | Fish Hatchery..... |
| Multiple Lane Undivided Highway..... | Community Hall..... |
| Divided Highway..... | Correctional Institution..... |
| Interstate Highway with Full Control of Access..... | Tourist Court or Motel..... |
| Side Roads and Streets..... | Monument-Small..... |
| Interstate-Numbered Highway..... | Museum..... |
| US-Numbered Highway..... | Firestation..... |
| State-Numbered Highway..... | Courthouse..... |
| State-Numbered Highway Spur..... | Armory..... |
| State-Numbered Highway Link..... | Post Office..... |
| Interstate Exit Number..... | Highway Maintenance Yard..... |
| Wide Stream..... | Dump Area..... |
| Narrow Stream..... | Sewage Disposal Plant..... |
| Irrigation Ditch..... | Water Supply Stand Pipe..... |
| Reservoir, Pond or Lake..... | Pipe Line..... |
| Reservoir, With Dam..... | Transmission Line..... |
| Highway Bridge-Any Type Over 20' span..... | Power Plant..... |
| Small Bridges-Closely Spaced (numbers indicate items which bridges are grouped)..... | Power Substation..... |
| General Bridge (wood, steel, concrete)..... | Radio or TV Station..... |
| Arch Bridge..... | Pumping Station..... |
| Truss Bridge..... | Weight Station or Port of Entry..... |
| Pedestrian Underpass..... | Commercial or Municipal Airport..... |
| Pedestrian Overpass..... | Airport with Paved Runways..... |
| Railroad Overpass..... | State Boundary..... |
| Railroad Underpass..... | County Boundary..... |
| Dam with Road on Top..... | Township Line..... |
| Dwelling..... | Section Line..... |
| Row of Dwellings..... | Corporate Limit Lines..... |
| Cemetery..... | Parks and Other Reservations..... |
| Church or Other Religious Institution..... | Boundary Limits of Area Shown in Enlargements (see enlargements for culture, State Capital)..... |
| Church with Cemetery Adjacent..... | County Seat..... |
| Hospital..... | Other Cities and Villages..... |
| Business..... | Incorporated City or Village..... |
| Industrial Plant..... | Triangulation Station..... |
| Filling Station..... | Points Between Which Distances Are Measured Indicated Thus..... |
| Grain Elevator..... | Latitude and Longitude..... |
| Aggregate Pit..... | Nebraska Coordinate System in thousands of feet..... |
| Agricultural Experiment Station..... | Universal Transverse Mercator Grid in thousands of feet..... |
| Educational Institutions..... | |



LAMBERT CONFORMAL CONIC PROJECTION
1927 NORTH AMERICAN DATUM
NEBRASKA COORDINATE SYSTEM-SOUTH ZONE

