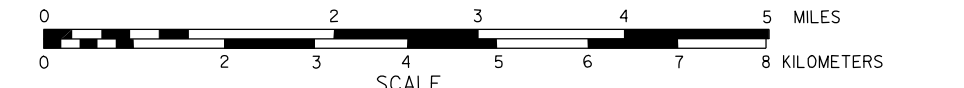


GENERAL HIGHWAY MAP
MORRILL COUNTY
 SOUTH HALF
NEBRASKA

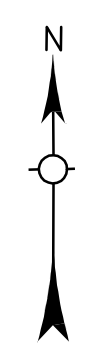
PREPARED BY THE
DEPARTMENT OF ROADS
 INFORMATION SYSTEMS DIVISION
 IN COOPERATION WITH THE
U.S. DEPARTMENT OF TRANSPORTATION
 FEDERAL HIGHWAY ADMINISTRATION
 1983



REVISION HISTORY			
NAME	DATE	REVISION	
GLENN WILLIAMS	FEBRUARY 2004	FLEESBUCK, MA	
GLENN WILLIAMS	MARCH 2004	REF. POSTS	

LEGEND

- Primitive Road.....
- Unimproved Road.....
- Gravel or Crushed Rock.....
- Asphalt/Bituminous Surface.....
- Concrete/Block Surface.....
- Multiple Lane Undivided Highway.....
- Divided Highway.....
- Interstate Highway with Full Control of Access.....
- Side Roads and Streets.....
- 911 NAMED/Numbered Roads.....
- Interstate/Numbered Highway.....
- US-Numbered Highway.....
- State-Numbered Highway.....
- State-Numbered Highway Spur.....
- State-Numbered Highway Link.....
- Highway Reference Post Number.....
- Interstate Exit Number.....
- Wide Stream.....
- Narrow Stream.....
- Irrigation Ditch.....
- Reservoir, Pond or Lake.....
- Reservoir with Dam.....
- Highway Bridge-Any Type Over 20' span.....
- Small Bridges-Closely Spaced.....
- Major Bridges-Individually Spaced.....
- General Bridge (Wood, Stone, Concrete).....
- Arch Bridge.....
- Truss Bridge.....
- Pedestrian Underpass.....
- Railroad Underpass.....
- Railroad.....
- Dike with Road on Top.....
- Cattle Guard.....
- Dwelling.....
- Row of Dwellings.....
- Cemetery.....
- Church or Other Religious Institution.....
- Church with Cemetery Adjacent.....
- Hospital.....
- Filling Station.....
- Grain Elevator.....
- Aggregate Pit.....
- Agricultural Experimental Station.....
- Educational Institutions.....
- Public Use Area.....
- Recreational Facilities.....
- Rest Area.....
- Ranger Station.....
- Fish Hatchery.....
- Community Hall.....
- Correctional Institution.....
- Tourist Court or Motel.....
- Monument-Small.....
- Museum.....
- Firestation.....
- Courthouse.....
- Armory.....
- Post Office.....
- Highway Maintenance Yard.....
- Dump Area.....
- Sewage Disposal Plant.....
- Water Supply Stand Pipe.....
- Pipe Line.....
- Transmission Line.....
- Power Plant.....
- Power Substation.....
- Radios or TV Station.....
- Pumping Station.....
- Weight Station or Port of Entry.....
- Commercial or Municipal Airport.....
- Airport with Paved Runways.....
- State Boundary.....
- County Boundary.....
- Township Line.....
- Section Line.....
- Corporate Limit Lines.....
- Parks and Other Reservations.....
- Boundary Limits of Area Shown in Enlargements (see enlargement for details).....
- State Capital.....
- County Seat.....
- Other Cities and Villages.....
- Incorporated City or Village.....
- Triangulation Station.....
- Points Between Which Distances are Measured Indicated Thus.....
- Latitude and Longitude.....



LAMBERT CONFORMAL CONIC PROJECTION
 1983 NORTH AMERICAN DATUM
 NEBRASKA COORDINATE SYSTEM

