

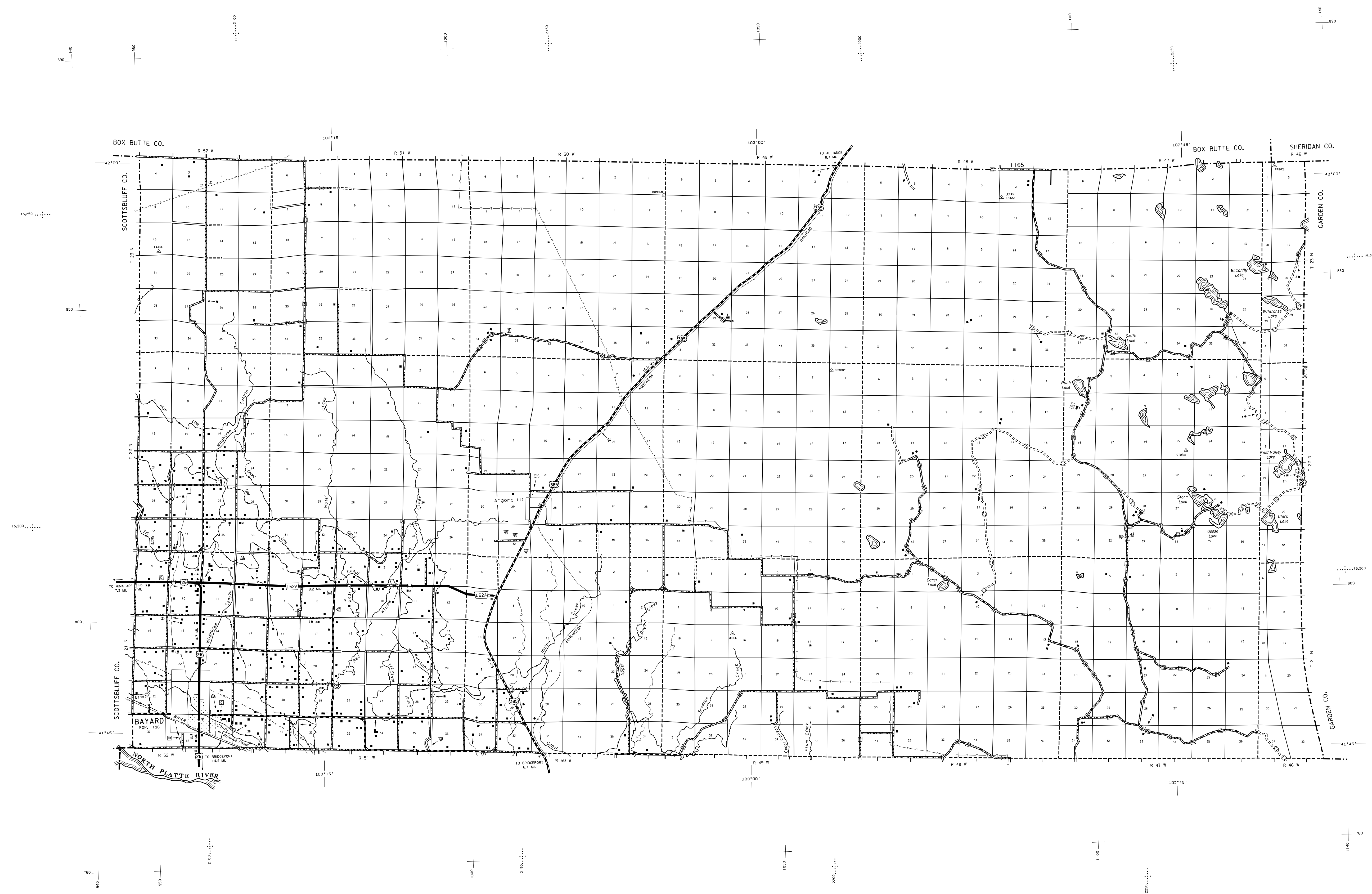
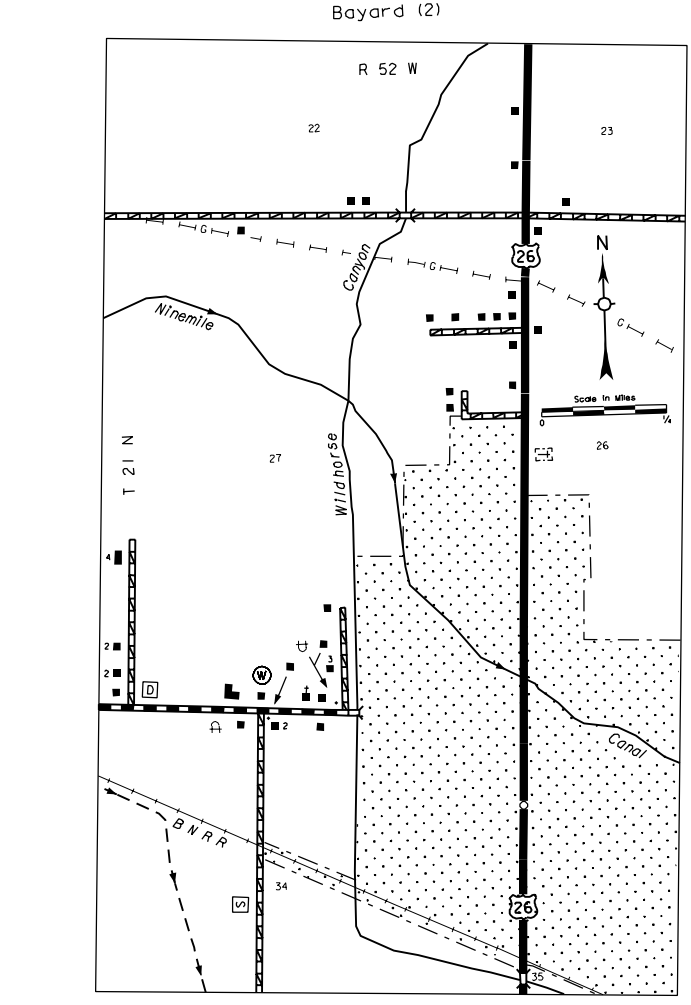
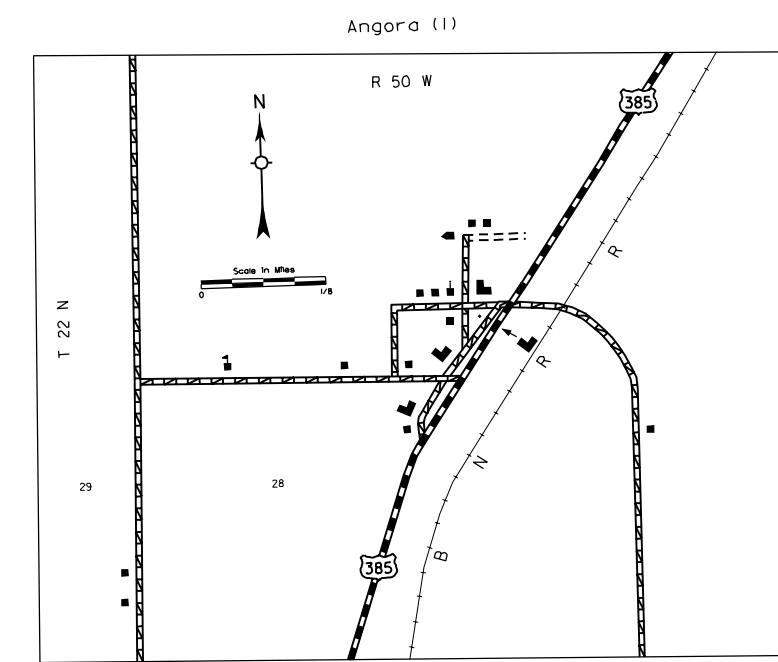
# GENERAL HIGHWAY MAP

## MORRILL COUNTY

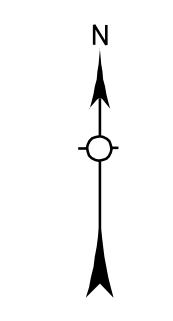
### NORTH HALF

### NEBRASKA

PREPARED BY THE  
**DEPARTMENT OF ROADS**  
 TRANSPORTATION PLANNING DIVISION  
IN COOPERATION WITH THE  
**U.S. DEPARTMENT OF TRANSPORTATION**  
 FEDERAL HIGHWAY ADMINISTRATION  
**1983**



LEGEND	
Primitive Road	Public Use Area
Unimproved Road	Recreational Facilities
Gravel or Crushed Rock	Rest Areas
Asphalt/Bituminous Surface	Ranger Station
Concrete/Brick Surface	Fish Hatchery
Multiple Lane Undivided Highway	Community Hall
Divided Highway	Correctional Institution
Interstate Highway with Full Control of Access	Tourist Court or Motel
State Roads and Streets	Monument - Small
Interstate-Numbered Highway	Museum
US-Numbered Highway	Firestation
State-Numbered Highway	Courthouse
State-Numbered Highway Spur	Armory
State-Numbered Highway Link	Post Office
Interstate Exit Number	Highway Maintenance Yard
Wide Stream	Dump Area
Narrow Stream	Sewage Disposal Plant
Irrigation Ditch	Water Supply Stand Pipe
Reservoir, Pond or Lake	Pipe Line
Reservoir with Dam	Transmission Line
Highway Bridge - Any Type	Power Plant
Small Bridges - Closely Spaced	Power Substation
General Bridge - Wood, Steel, Concrete	Radio or TV Station
Arch Bridge	Pumping Station
Truss Bridge	Weight Station or Port of Entry
Recreation Underpass	Commercial or Municipal Airport
Pedestrian Underpass	Airport with Paved Runways
Railroad Overpass	State Boundary
Railroad Underpass	County Boundary
Railroad	Township Line
Dam with Road on Top	Section Line
Cattle Guard	Corporate Limit Lines
Dwelling	Parks and Other Reservations
Row of Dwellings	Boundary Limits of Area Shown in Enticements (See enticements for details)
Cemetery	State Capital
Church or Other Religious Institution	County Seat
Church with Cemetery Adjacent	Other Cities and Villages
Business	Incorporated City or Village
Industrial Plant	Triangulation Station
Filling Station	Points Between Which Distances Are Measured Indicated Thus
Grain Elevator	Latitude and Longitude
Aggregate Pit	Nebraska Coordinate System
Agricultural Experimental Station	Universal Transverse Mercator Grid
Educational Institutions	



LAMBERT CONFORMAL CONIC PROJECTION  
 1927 NORTH AMERICAN DATUM  
 NEBRASKA COORDINATE SYSTEM-NORTH ZONE

