

GENERAL HIGHWAY MAP McPHERSON COUNTY NEBRASKA

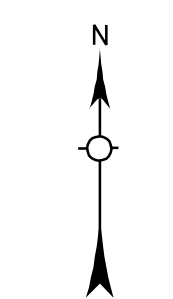
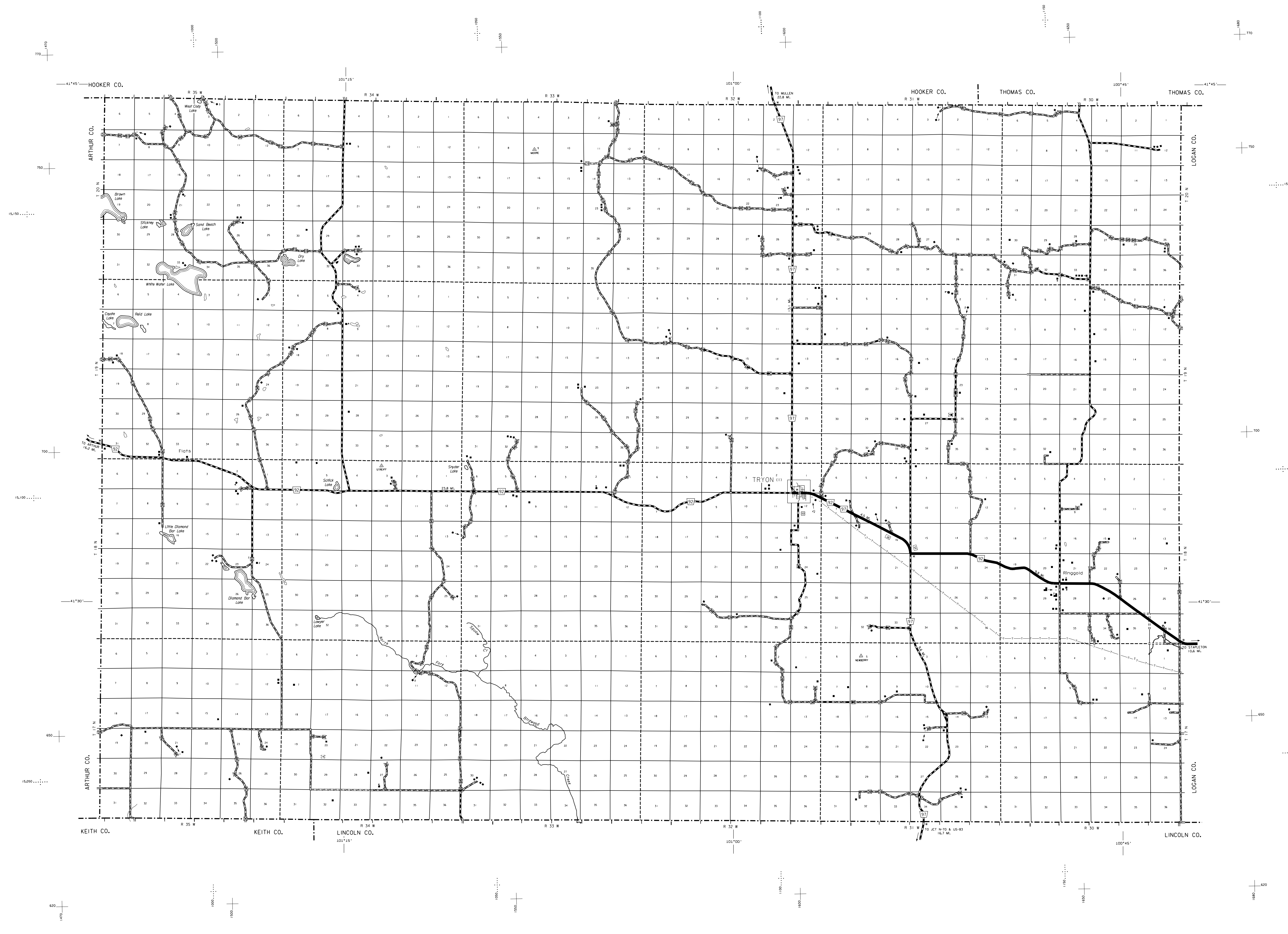
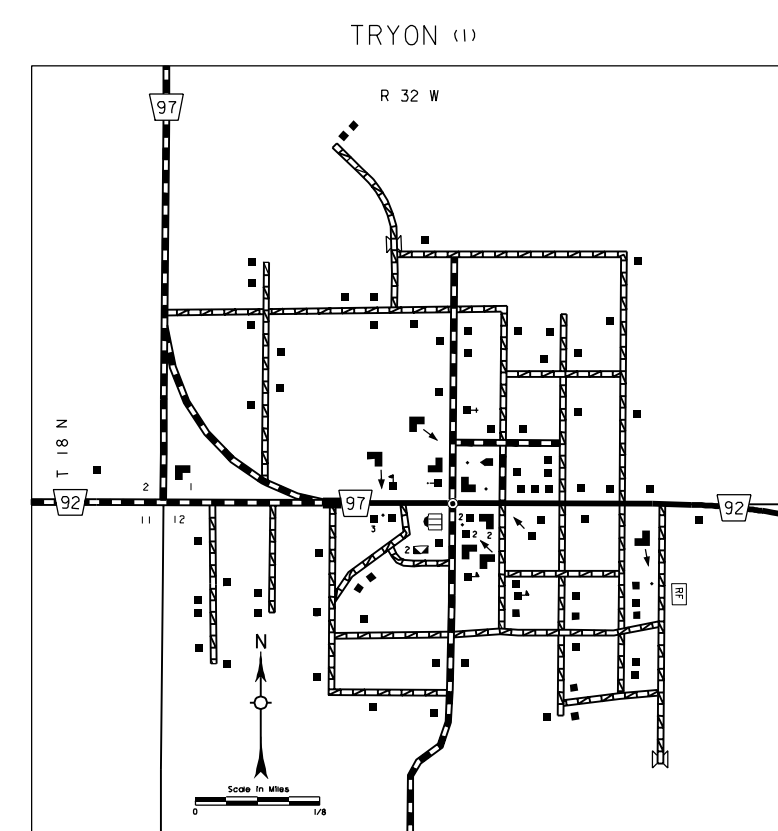
PREPARED BY THE
DEPARTMENT OF ROADS
TRANSPORTATION PLANNING DIVISION
IN COOPERATION WITH THE
U.S. DEPARTMENT OF TRANSPORTATION
FEDERAL HIGHWAY ADMINISTRATION

1986



LEGEND

- | | |
|--|--|
| Primitive Road | Public Use Area |
| Unimproved Road | Some athletic grounds, swimming pools, etc. |
| Gravel or Crushed Rock | Recreational Facilities |
| Asphalt/Bituminous Surface | Amphibious field, country club, fairgrounds, etc. |
| Concrete/Brick Surface | Ranger Station |
| Multiple Lane Undivided Highway | Flax Hatchery |
| Divided Highway | Community Hall |
| Interstate Highway with Full Control of Access | Correctional Institution |
| Side Roads and Streets | Tourist Court or Motel |
| Interstate-Numbered Highway | Monument-Small |
| US-Numbered Highway | Museum |
| State-Numbered Highway | Fire Station |
| State-Numbered Highway Spur | Courthouse |
| Interstate Exit Number | Armory |
| Wide Stream | Post Office |
| Narrow Stream | Highway Maintenance Yard |
| Irrigation Ditch | Dump Area |
| Reservoir, Pond or Lake | Sewage Disposal Plant |
| Reservoir with Dam | Water Supply Stand Pipe |
| Highway Bridge-Any Type, lower 20' span | Pipe Line - Irrigation |
| Small Bridges-Closely Spaced, spacings indicate spans within which bridges are grouped | Transmission Line |
| General Bridge - wood, steel, concrete | Power Plant |
| Arch Bridge | Radio or TV Station |
| Truss Bridge | Pumping Station |
| Pedestrian Overpass | Weight Station or Part of Entry |
| Pedestrian Underpass | Commercial or Municipal Airport |
| Railroad Overpass | Store Boundary |
| Railroad Underpass | County Boundary |
| Railroad | Township Line |
| Dam with Road on Top | Section Line |
| Cattle Guard | Corporate Limit Lines |
| Dwelling | Parks and Other Reservations |
| Row of Dwellings | Boundary Limits of Area Shown in Enlargements - see enlargements for details |
| Cemetery | State Capital |
| Church or Other Religious Institution | County Seat |
| Church with Cemetery Adjacent | Other Cities and Villages |
| Hospital | Incorporated City or Village |
| Business | Triangulation Station |
| Industrial Plant | Points Between Which Distances Are Measured Indicated Thus |
| Filling Station | Latitude and Longitude |
| Grain Elevator | Nebraska Coordinate System - in thousands of feet |
| Aggregate Pit | Universal Transverse Mercator Grid - in thousands of feet |
| Agricultural Experimental Station | |
| Educational Institutions | |



LAMBERT CONFORMAL CONIC PROJECTION
1927 NORTH AMERICAN DATUM
NEBRASKA COORDINATE SYSTEM-SOUTH ZONE

