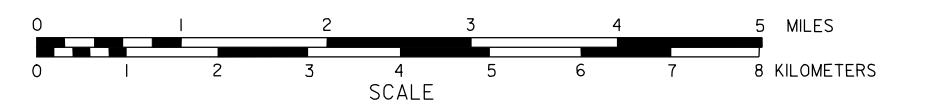


# GENERAL HIGHWAY MAP MADISON COUNTY NEBRASKA

PREPARED BY THE  
**DEPARTMENT OF ROADS**  
INFORMATION SYSTEMS DIVISION  
IN COOPERATION WITH THE  
**U.S. DEPARTMENT OF TRANSPORTATION**  
FEDERAL HIGHWAY ADMINISTRATION

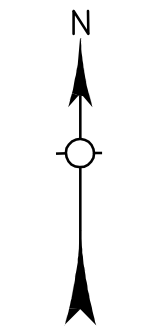
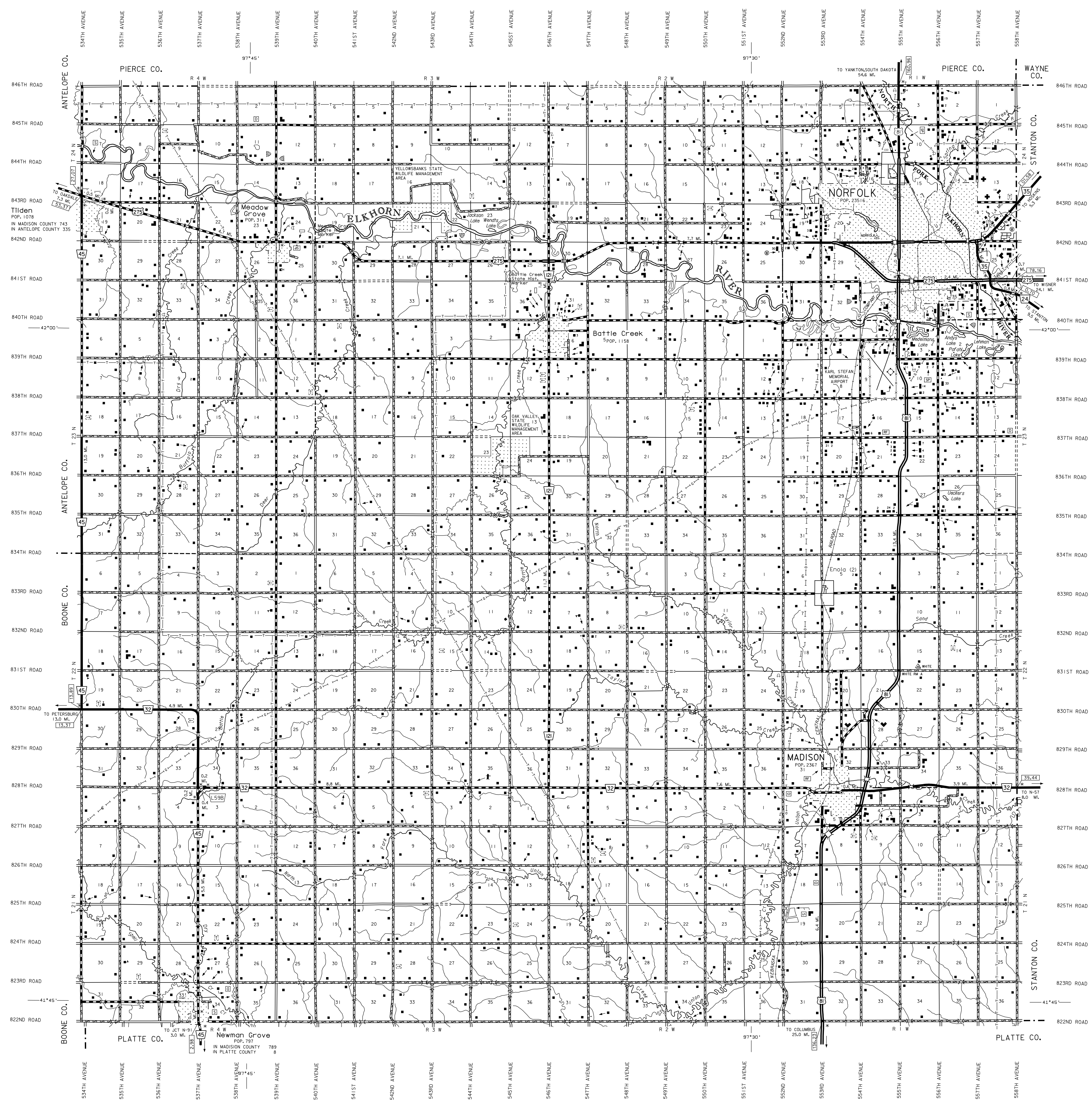
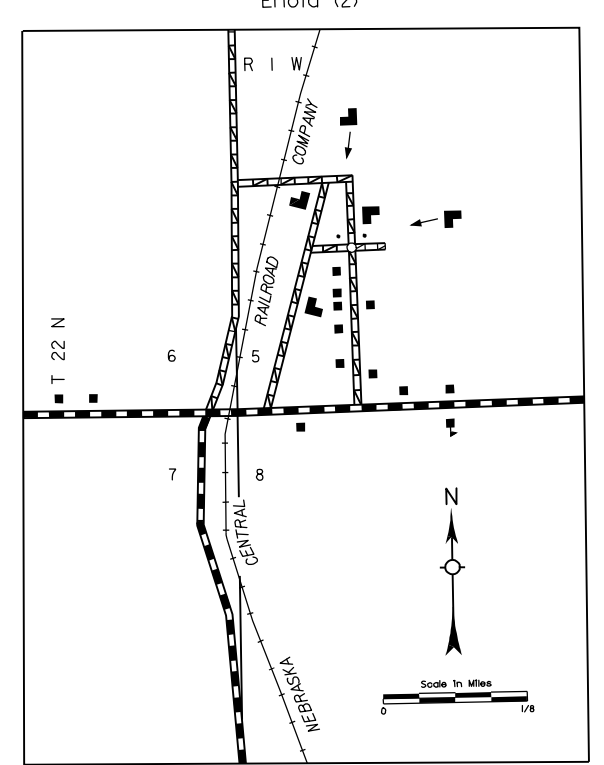
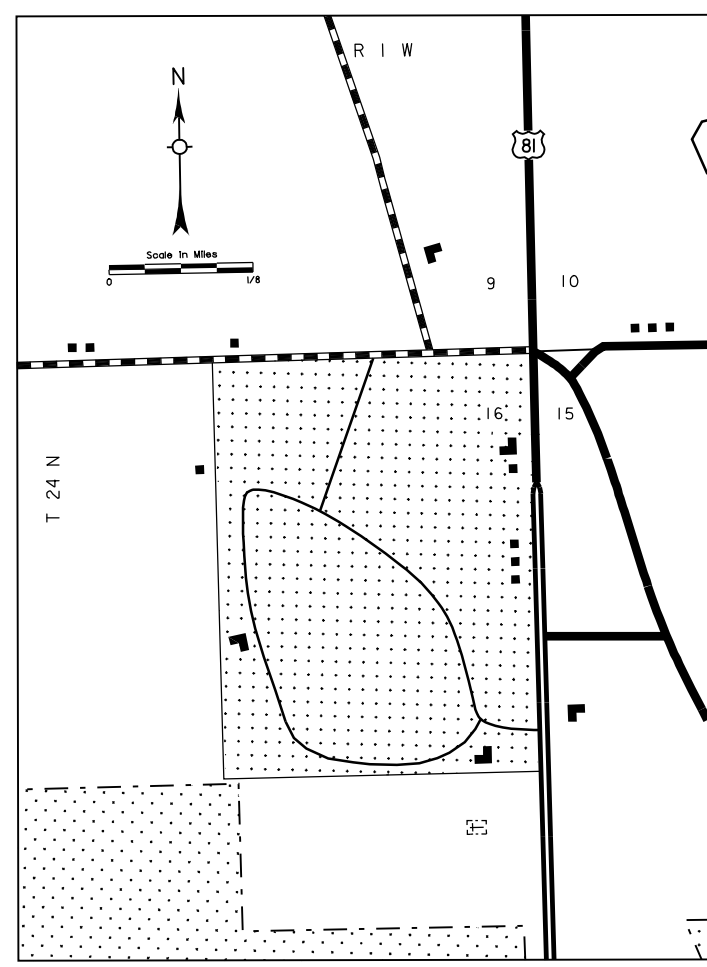


INVENTORY DATE:  
**1994**

NAME	DATE	REVISION
LARRY GRIFFITH	1995	COUNTY
COLSON SMITH	MAR 2001	911 SYSTEM
GLENN WILLIAMS	JUNE 2004	HWY REF POSTS
GLENN WILLIAMS	AUGUST 2004	CO RD ALIGNMENT

### LEGEND

- |   |   |
|---|---|
| Primitive Road.....   | Aggregate Pit.....  |
| Unimproved Road.....  | Agricultural Experimental Station.....  |
| Gravel or Crushed Rock.....   | Educational Institutions.....   |
| Asphalt/Bituminous Surface.....   | Public Use Area.....  |
| Concrete/Block Surface.....   | State, fed, state ground, swimming pool, etc.                                     |
| Multiple Lane Undivided Highway.....  | Recreational Facilities.....  |
| Divided Highway.....  | State, fed, county club, fairground, etc.   |
| Interstate Highway with Full Control of Access.....                                 | Rest Area.....  |
| State-Numbered Highway.....   | Ranger Station.....   |
| Side Roads and Streets.....   | Flm. History.....   |
| 911 NAME/Numbered Roads.....  | Community Hall.....   |
| Interstate-Numbered Highway.....  | Correctional Institution.....   |
| US-Numbered Highway.....  | Tourist Court or Motel.....   |
| State-Numbered Highway.....   | Monument-Small.....   |
| State-Numbered Highway Spur.....  | Museum.....   |
| State-Numbered Highway Link.....  | Fire Station.....   |
| Highway Reference Post Number.....  | Courthouse.....   |
| Interstate Exit Number.....   | Armory.....   |
| Wide Stream.....  | Post Office.....  |
| Narrow Stream.....  | Highway Maintenance Yard.....   |
| Irrigation Ditch.....   | Dump Area.....  |
| Reservoir, Pond or Lake.....  | Sewage Disposal Plant.....  |
| Reservoir, With Dam.....  | Water Supply Stand Pipe.....  |
| Highway Bridge-Any Type (over 20 span).....   | Pipe Line.....  |
| Small Bridges-Closely Spaced (structures indicate date, with spans or grouped)..... | Transmission Line.....  |
| General Bridge (wood, stone, concrete).....   | Power Plant.....  |
| Arch Bridge.....  | Power Substation.....   |
| Truss Bridge.....   | Radio or TV Station.....  |
| Pedestrian Underpass.....   | Pumping Station.....  |
| Pedestrian Overpass.....  | Weight Station or Port of Entry.....  |
| Railroad Overpass.....  | Commercial or Municipal Airport.....  |
| Railroad.....   | Airport with Paved Runways.....   |
| Dam with Road on Top.....   | State Boundary.....   |
| Cattle Guard.....   | County Boundary.....  |
| Dwelling.....   | Township Line.....  |
| Row of Dwellings.....   | Section Line.....   |
| State Capital.....  | Corporate Limit Lines.....  |
| Church or Other Religious Institution.....  | Parks and Other Reservations.....   |
| Church with Cemetery Adjacent.....  | Boundary Limits of Area Shown in Enlargements (see enlargements for culture)..... |
| Hospital.....   | State Capital.....  |
| Business.....   | County Seat.....  |
| Filling Station.....  | Other Cities and Villages.....  |
| Grain Elevator.....   | Incorporated City or Village.....   |
|   | Triangulation Station.....  |
|   | Points Between Which Distances Are Measured Indicated Thus.....                   |
|   | Latitude and Longitude.....   |



LAMBERT CONFORMAL CONIC PROJECTION  
1983 NORTH AMERICAN DATUM  
NEBRASKA COORDINATE SYSTEM

