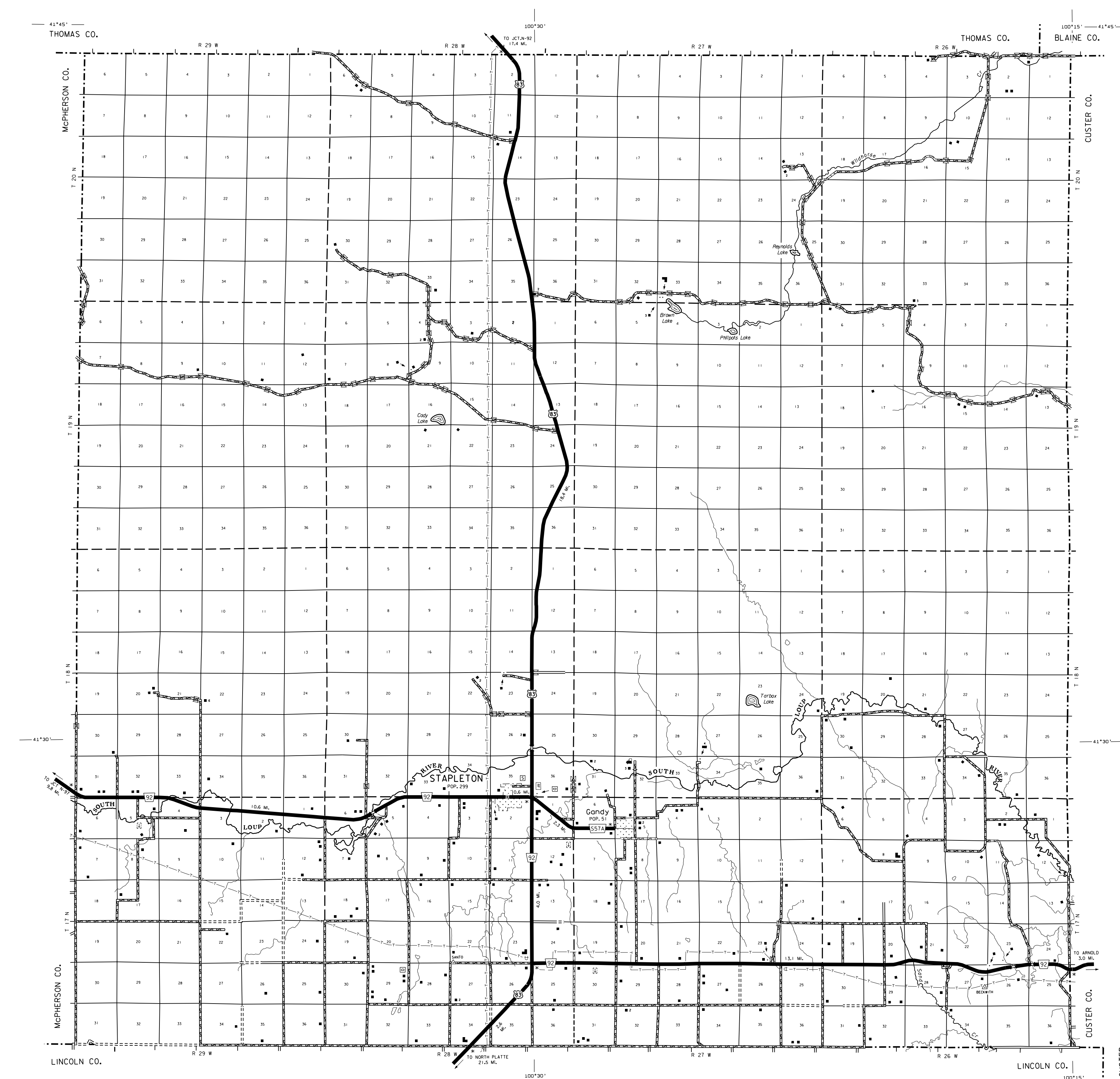
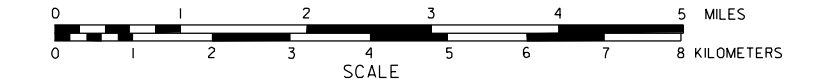


GENERAL HIGHWAY MAP LOGAN COUNTY NEBRASKA

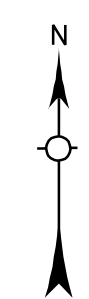
PREPARED BY THE
DEPARTMENT OF ROADS
TRANSPORTATION PLANNING DIVISION
IN COOPERATION WITH THE
U.S. DEPARTMENT OF TRANSPORTATION
FEDERAL HIGHWAY ADMINISTRATION

1986

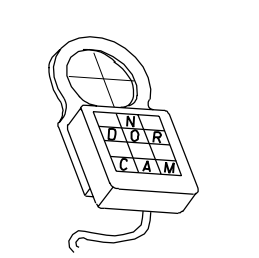
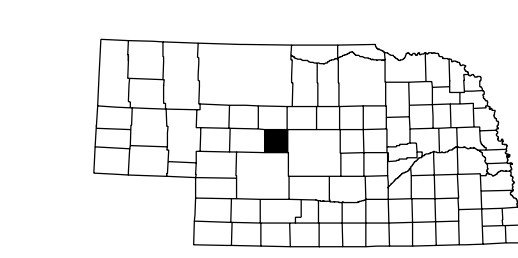


LEGEND

- | | |
|---|---|
| Primitive Road | Public Use Area |
| Unimproved Road | Recreational Facilities |
| Gravel or Crushed Rock | Rail Station |
| Asphalt/Bituminous Surface | Ranger Station |
| Concrete/Brick Surface | Fish Hatchery |
| Multiple Lane Undivided Highway | Community Hall |
| Divided Highway | Correctional Institution |
| Interstate Highway with Full Control of Access | Tourist Court or Motel |
| State Road and Streets | Monument-Small |
| Interstate-Numbered Highway | Museum |
| US-Numbered Highway | Firestation |
| State-Numbered Highway | Courthouse |
| State-Numbered Highway Spur | Armory |
| State-Numbered Highway Link | Post Office |
| Interstate Exit Number | Highway Maintenance Yard |
| Wide Stream | Dump Area |
| Narrow Stream | Sewage Disposal Plant |
| Irrigation Ditch | Water Supply Stand Pipe |
| Reservoir, Pond or Lake | Pipe Line - Petroleum |
| Reservoir, With Dam | Transmission Line |
| Highway Bridge-Any Type - over 20 spans | Power Plant |
| Small Bridges-Closely Spaced, pavements indicate spans which bridges are graded | Radio or TV Station |
| General Bridge - wood, steel, concrete | Pumping Station |
| Arch Bridge | Weight Station or Port of Entry |
| Pedestrian Overpass | Commercial or Municipal Airport |
| Pedestrian Overpass | Airport with Paved Runways |
| Railroad Overpass | State Boundary |
| Railroad Underpass | County Boundary |
| Railroad | Township Line |
| Dam with Road on Top | Section Line |
| Cattle Guard | Corporate Limit Lines |
| Dwelling | Parks and Other Reservations |
| Row of Dwellings | Boundary Limits of Area Shown in Enlargement's see enlargements for contour |
| Cemetery | State Capital |
| Church or Other Religious Institution | County Seat |
| Church with Cemetery Adjacent | Other Cities and Villages |
| Hospital | Incorporated City or Village |
| Business | Triangulation Station |
| Industrial Plant | Points Between Which Distances Are Measured Indicated Thus |
| Filling Station | Latitude and Longitude |
| Grain Elevator | Nebraska Coordinate System in thousands of feet |
| Aggregate Pit | Universal Transverse Mercator Grid in thousands of feet |
| Agricultural Experimental Station | |
| Educational Institutions | |



LAMBERT CONFORMAL CONIC PROJECTION
1927 NORTH AMERICAN DATUM
NEBRASKA COORDINATE SYSTEM-SOUTH ZONE



KEY TO COUNTIES