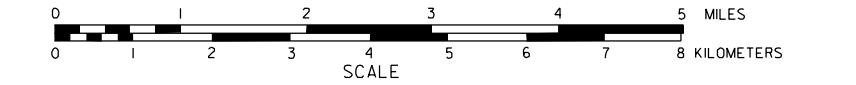


GENERAL HIGHWAY MAP KIMBALL COUNTY NEBRASKA

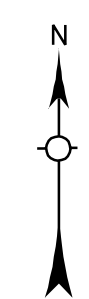
PREPARED BY THE
DEPARTMENT OF ROADS
TRANSPORTATION PLANNING DIVISION
IN COOPERATION WITH THE
U.S. DEPARTMENT OF TRANSPORTATION
FEDERAL HIGHWAY ADMINISTRATION
1985



LEGEND

- Primitive Road
- Unimproved Road
- Gravel or Crushed Rock
- Non-Rigid Pavement (e.g., Asphalt)
- Rigid Pavement (e.g., Asphalt or Brick)
- Multiple Lane Undivided Highway
- Divided Highway
- Interstate Highway with Full Control of Access
- State-Numbered Highway
- State-Numbered Highway Spur
- State-Numbered Highway Link
- Interstate Exit Number
- Wide Stream
- Narrow Stream
- Irrigation Ditch
- Reservoir, Pond or Lake
- Reservoir, with Dam
- Highway Bridge Any Type, lower 20' span
- Small Bridges-Closely Spaced, 20' spans or greater
- General Bridge-Wood, Steel, Concrete
- Arch Bridge
- Truss Bridge
- Pedestrian Underpass
- Pedestrian Overpass
- Railroad Overpass
- Railroad Underpass
- Dam with Road on Top
- Dwelling
- Row of Dwellings
- Cemetery
- Church or Other Religious Institution
- Church with Cemetery Adjacent
- Hospital
- Business
- Industrial Plant
- Filling Station
- Grain Elevator
- Aggregate Pit
- Agricultural Experimental Station
- Educational Institutions
- Public Use Area
- Recreational Facilities
- Rest Area
- Ranger Station
- Fish Hatchery
- Community Hall
- Correctional Institution
- Tourist Court or Motel
- Monument-Small
- Museum
- Firestation
- Courthouse
- Armory
- Post Office
- Highway Maintenance Yard
- Dump Area
- Water Supply Stand Pipe
- Pipe Line
- Transmission Line
- Power Plant
- Power Substation
- Radio or TV Station
- Pumping Station
- Weight Station or Part of Entry
- Commercial or Municipal Airport
- Airport with Paved Runways
- State Boundary
- County Boundary
- Township Line
- Section Line
- Corporate Limit Lines
- Parks and Other Reservations
- Boundary Limits of Area Shown in Enclosures B use enclosures for cultural
- State Capital
- County Seat
- Other Cities and Villages
- Incorporated City or Village
- Triangulation Station
- Points Between Which Distances Are Measured Indicated Thus
- Latitude and Longitude
- Nebraska Coordinate System (in thousands of feet)
- Universal Transverse Mercator Grid (in thousands of feet)

REVISION HISTORY		
NAME	DATE	REVISION
L. GOLDSMITH	OCT. 2000	RTI SYSTEM



LAMBERT CONFORMAL CONIC PROJECTION
1927 NORTH AMERICAN DATUM
NEBRASKA COORDINATE SYSTEM-SOUTH ZONE

