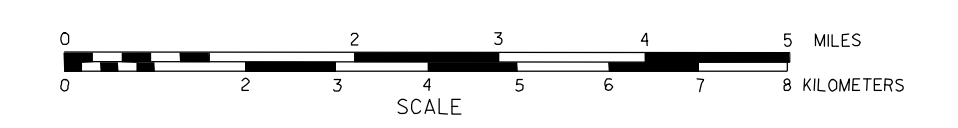


GENERAL HIGHWAY MAP KEARNEY COUNTY NEBRASKA

PREPARED BY THE
DEPARTMENT OF ROADS
INFORMATION SYSTEMS DIVISION
IN COOPERATION WITH THE
U.S. DEPARTMENT OF TRANSPORTATION
FEDERAL HIGHWAY ADMINISTRATION

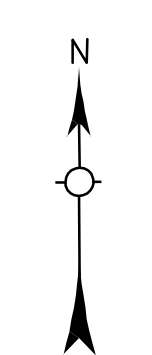


INVENTORY DATE:
1982

REVISION HISTORY			
NAME	DATE	REVISION	COUNTY
G. MICHEL	JULY 1999		KEARNEY
S. BRAIN	DEC. 2000	CD RD TYPE CHANGE	
L. LOCKSMITH	NOV. 2000	911 SYSTEM	
S. BRAIN	JUN. 2001	CD RD TYPE CHANGE	
GLENN WILLIAMS	DECEMBER 2003	911 KEARNEY SPELLING CORRECTIONS	
GLENN WILLIAMS	APRIL 2004	HWY REFERENCE POSTS AT BORDERS	

LEGEND

- | | | | |
|--|-------|--|-------|
| Primitive Road | | Agricultural Experimental Station | |
| Unimproved Road | | Educational Institutions | |
| Gravel or Crushed Road | | Public Use Area | |
| Asphalt/Bituminous Surface | | Recreational Facilities | |
| Concrete/Block Surface | | Rest Area | |
| Multiple Lane Undivided Highway | | Ranger Station | |
| Divided Highway | | Flax Hatchery | |
| Interstate Highway with Full Control of Access | | Community Hall | |
| State Roads and Streets | | Correctional Institution | |
| 911 NAMED/Numbered Roads | | Tourist Court or Motel | |
| Interstate-Numbered Highway | | Monument-Small | |
| US-Numbered Highway | | Museum | |
| State-Numbered Highway | | Firestation | |
| State-Numbered Highway Spur | | Courthouse | |
| State-Numbered Highway Link | | Army | |
| Interstate Exit Number | | Post Office | |
| Wide Stream | | Highway Maintenance Yard | |
| Narrow Stream | | Dump Area | |
| Irrigation Ditch | | Sewage Disposal Plant | |
| Reservoir, Pond or Lake | | Water Supply Stand Pipe | |
| Reservoir, With Dam | | Pipe Line - Paracable | |
| Highway Bridge-Any Type Over 20' Span | | Transmission Line | |
| Small Bridges-Closely Spaced | | Power Plant | |
| General Bridge (See State Capitals) | | Power Substation | |
| Arch Bridge | | Radio or TV Station | |
| Truss Bridge | | Pumping Station | |
| Pedestrian Underpass | | Relay Station or Part of Entry | |
| Pedestrian Overpass | | Commercial or Municipal Airport | |
| Railroad Overpass | | Airport with Paved Runways | |
| Railroad Underpass | | State Boundary | |
| Dam with Road on Top | | County Boundary | |
| Cattle Guard | | Township Line | |
| Dwelling | | Section Line | |
| Row of Dwellings | | Corporate Limit Lines | |
| Cemetery | | Parks and Other Reservations | |
| Church or Other Religious Institution | | Boundary Limits of Area Shown in Enlargements (see enlargements for details) | |
| Church with Cemetery Adjacent | | State Capital | |
| Hospital | | County Seat | |
| Business | | Other Cities and Villages | |
| Industrial Plant | | Incorporated City or Village | |
| Filling Station | | Triangulation Station | |
| Grain Elevator | | Points Between Which Distances Are Measured Indicated Thus | |
| Aggregate Pit | | Latitude and Longitude | |



LAMBERT CONFORMAL CONIC PROJECTION
1983 NORTH AMERICAN DATUM
NEBRASKA COORDINATE SYSTEM

