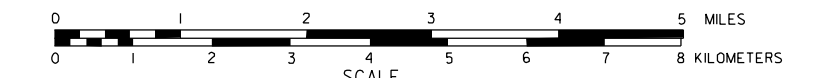


GENERAL HIGHWAY MAP JEFFERSON COUNTY NEBRASKA

PREPARED BY THE
DEPARTMENT OF ROADS
TRANSPORTATION PLANNING DIVISION
IN COOPERATION WITH THE
U.S. DEPARTMENT OF TRANSPORTATION
FEDERAL HIGHWAY ADMINISTRATION

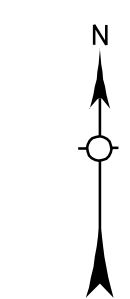
1988



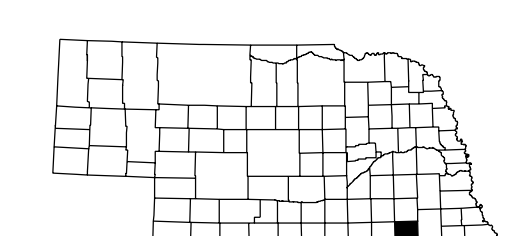
REVISION HISTORY		
NAME	DATE	REVISION
L. GOLDSMITH	NOV. 2000	STI SYSTEM

LEGEND

- | | |
|--|---|
| Primitive Road | Public Use Area |
| Unimproved Road | Recreational Facilities |
| Gravel or Crushed Rock | State Historic Site |
| Non Rigid Pavement (Bit. or Asphalt) | Ranger Station |
| Rigid Pavement (P.C.C., Asphalt or Brick) | Post Office |
| Multiple Lane Undivided Highway | Highway Maintenance Yard |
| Divided Highway | Dump Area |
| Interstate Highway with Full Control of Access | Sewage Disposal Plant |
| Side Roads and Streets | Water Supply Stand Pipe |
| Interstate-Numbered Highway | Transmission Line |
| US-Numbered Highway | Power Plant |
| State-Numbered Highway | Power Substation |
| State-Numbered Highway Spur | Radio or TV Station |
| Interstate Exit Number | Pumping Station |
| Wide Stream | Weight Station or Port of Entry |
| Narrow Stream | Commercial or Municipal Airport |
| Irrigation Ditch | Airport with Paved Runways |
| Reservoir, Pond or Lake | State Boundary |
| Reservoir, With Dam | County Boundary |
| Highway Bridge-Any Type, (over 20 span) | Township Line |
| Small Bridges-Closely Spaced, (under 20 span) | Section Line |
| General Bridge-Wood, Steel, Concrete | Corporate Limit Lines |
| Arch Bridge | Parks and Other Reservations |
| Truss Bridge | Boundary Limits of Area Shown in Entailments (see arrangements for surface) |
| Pedestrian Underpass | State Capital |
| Railroad Overpass | County Seat |
| Railroad Underpass | Other Cities and Villages |
| Railroad | Cemetery |
| Dam with Road on Top | Church or Other Religious Institution |
| Cattle Guard | Church with Cemetery Adjacent |
| Dwelling | Hospital |
| Row of Dwellings | Business |
| Cemetery | Industrial Plant |
| Church or Other Religious Institution | Filling Station |
| Church with Cemetery Adjacent | Grain Elevator |
| Hospital | Aggregate Pit |
| Business | Agricultural Experimental Station |
| Industrial Plant | Educational Institutions |
| Filling Station | |
| Grain Elevator | |
| Aggregate Pit | |
| Agricultural Experimental Station | |
| Educational Institutions | |



LAMBERT CONFORMAL CONIC PROJECTION
1927 NORTH AMERICAN DATUM
NEBRASKA COORDINATE SYSTEM-SOUTH ZONE



KEY TO COUNTIES

