

GENERAL HIGHWAY MAP HOOKER COUNTY NEBRASKA

PREPARED BY THE
DEPARTMENT OF ROADS
TRANSPORTATION PLANNING DIVISION
IN COOPERATION WITH THE
U.S. DEPARTMENT OF TRANSPORTATION
FEDERAL HIGHWAY ADMINISTRATION

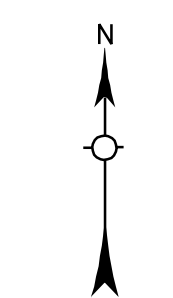
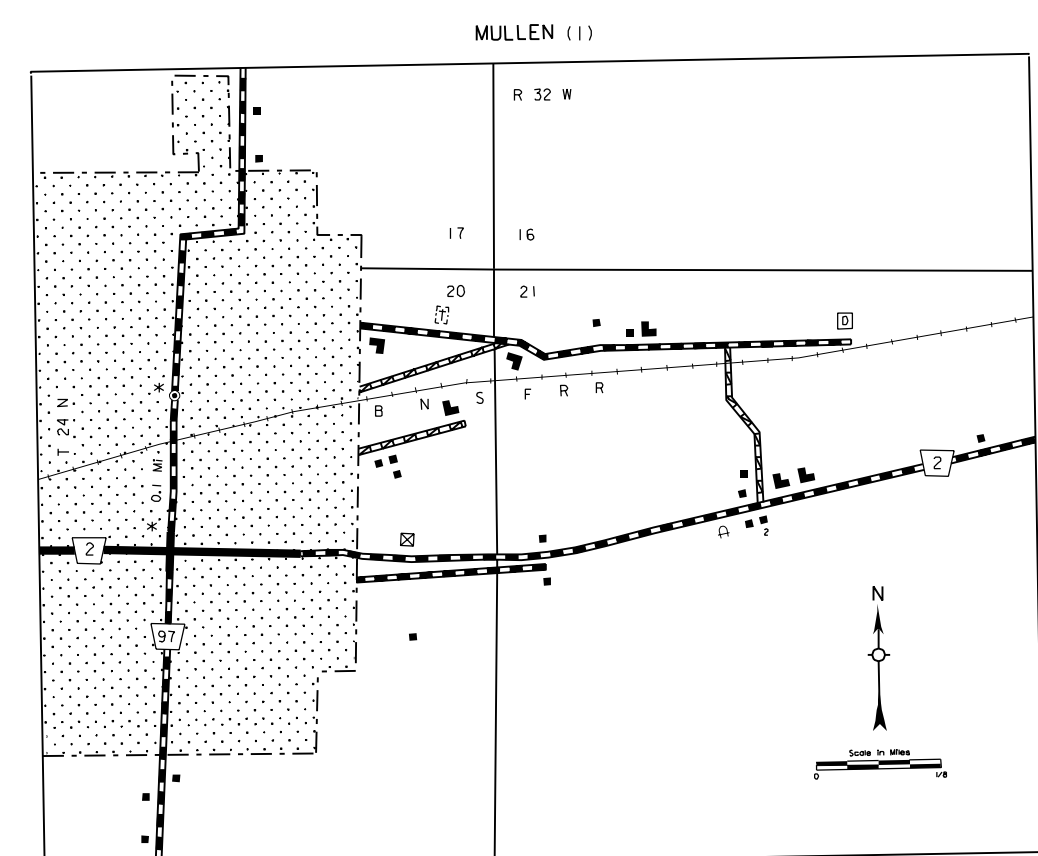
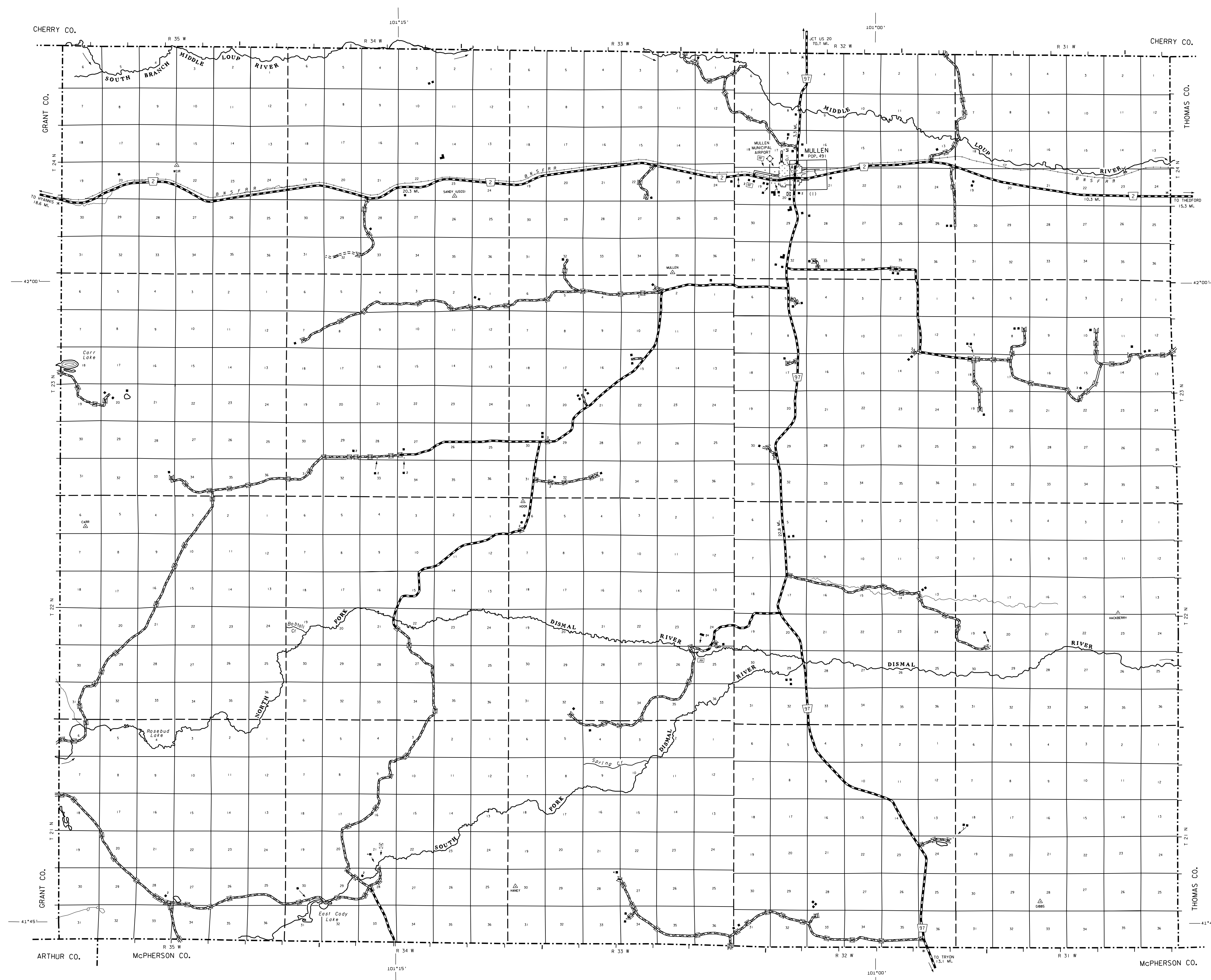
2000



REVISION HISTORY		
NAME	DATE	REVISION
C. VESKINA	MAY 2000	COUNTY

LEGEND

- | | |
|---|---|
| <ul style="list-style-type: none"> Primitive Road Unimproved Road Gravel or Crushed Rock Asphalt/Bituminous Surface Concrete/Brick Surface Multiple Lane Undivided Highway Divided Highway Interstate Highway with Full Control of Access State Roads and Streets 911 NAMED/Numbered Roads Interstate-Numbered Highway US-Numbered Highway State-Numbered Highway State-Numbered Highway Spur State-Numbered Highway Link Interstate Exit Number Wide Stream Narrow Stream Irrigation Ditch Reservoir, Pond or Lake Reservoir, With Dam Highway Bridge-Any Type Small Bridges-Closely Spaced General Bridge Arch Bridge Truss Bridge Pedestrian Underpass Railroad Underpass Dom with Road on Top Cattle Guard Dwelling Row of Dwellings Cemetery Church or Other Religious Institution Church with Cemetery Adjacent Hospital Business Industrial Plant Filling Station Grain Elevator Aggregate Pile | <ul style="list-style-type: none"> Agricultural Experimental Station Educational Institutions Public Use Area Recreational Facilities Rest Area Ranger Station Fish Hatchery Community Hall Correctional Institution Tourist Court or Motel Monument-Small Museum Fire Station Courthouse Armory Post Office Highway Maintenance Yard Dump Area Sewage Disposal Plant Water Supply Stand Pipe Pipe Line Transmission Line Power Plant Power Substation Road or TV Station Pumping Station Weight Station or Port of Entry Commercial or Municipal Airport Airport with Paved Runways State Boundary County Boundary Township Line Section Line Corporate Limit Lines Parks and Other Reservations Boundary Limits of Area Shown in Enlargements State Capital County Seat Other Cities and Villages Incorporated City or Village Triangulation Station Points Between Which Distances Are Measured Indicated Thus Latitude and Longitude |
|---|---|



LAMBERT CONFORMAL CONIC PROJECTION
1983 NORTH AMERICAN DATUM
NEBRASKA COORDINATE SYSTEM

