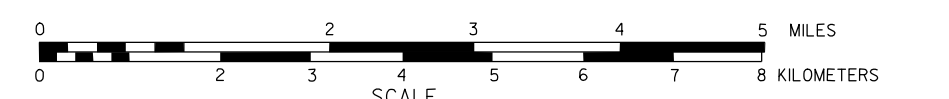


# GENERAL HIGHWAY MAP GREELEY COUNTY NEBRASKA

PREPARED BY THE  
DEPARTMENT OF ROADS  
INFORMATION SYSTEMS DIVISION  
IN COOPERATION WITH THE  
U.S. DEPARTMENT OF TRANSPORTATION  
FEDERAL HIGHWAY ADMINISTRATION

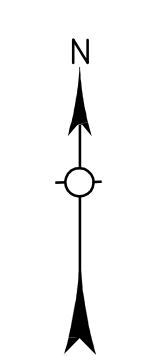
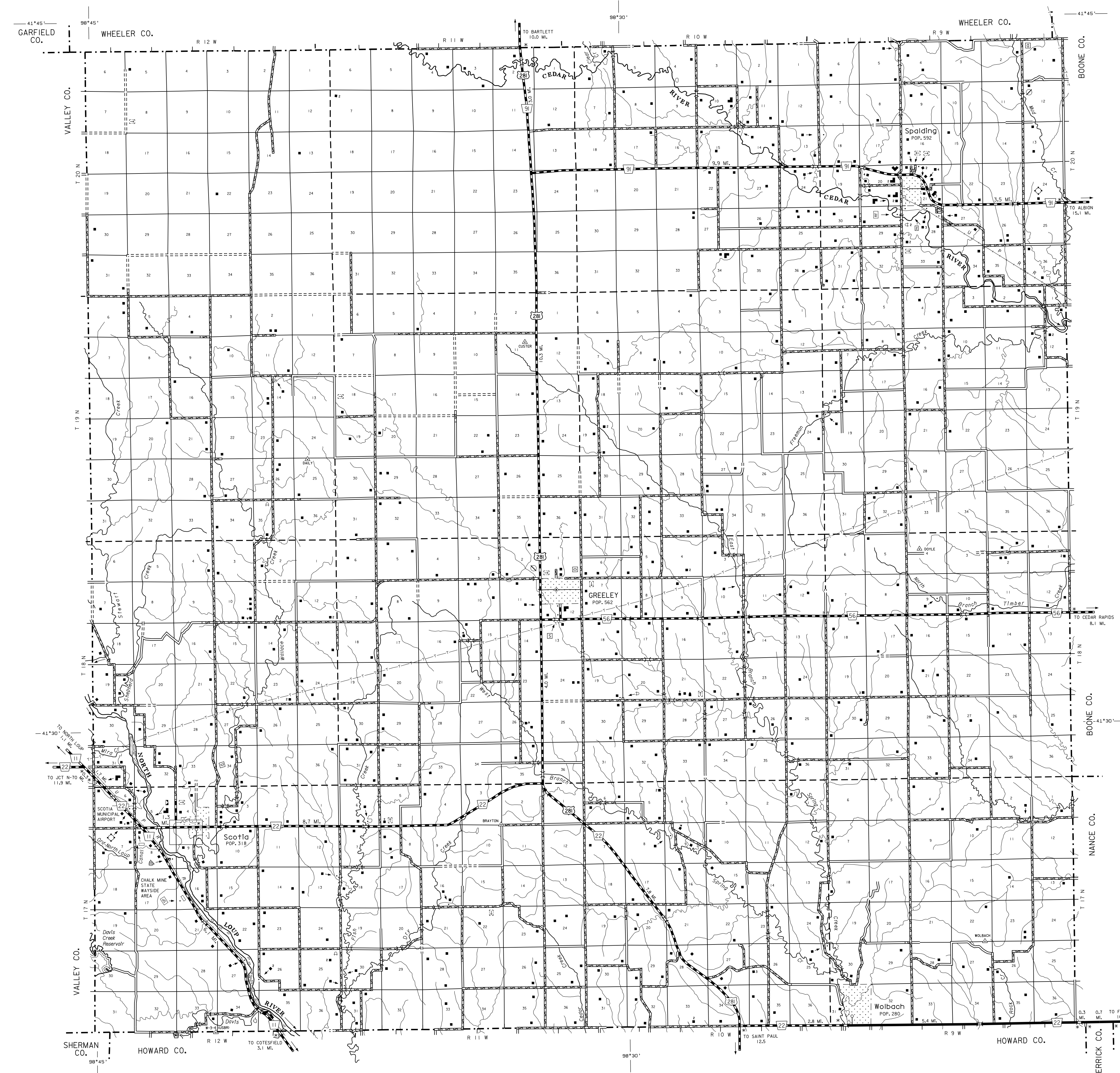
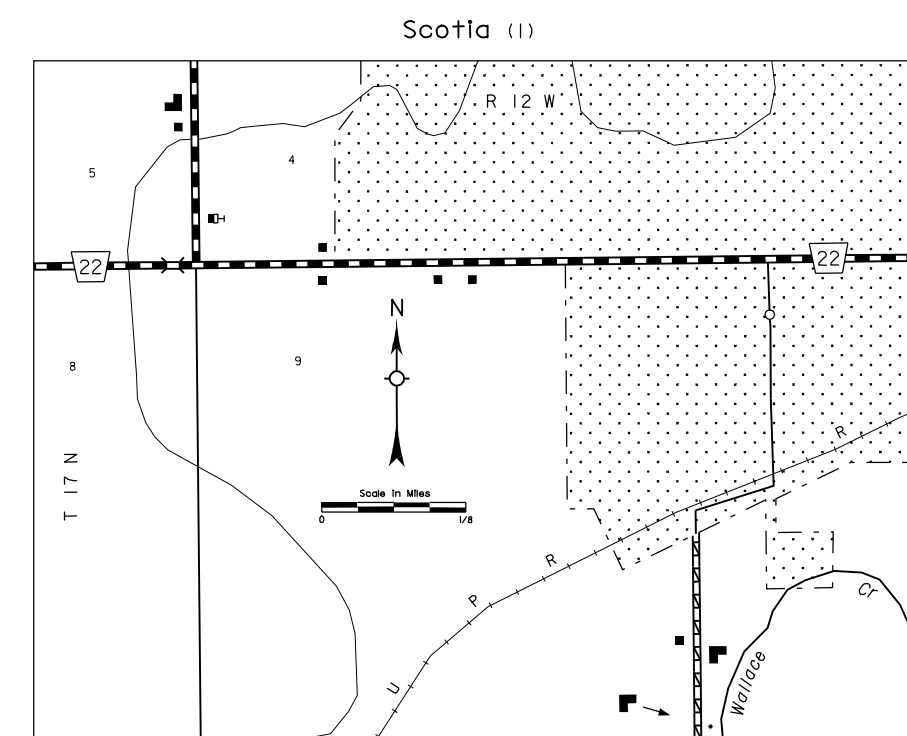
1989



REVISION HISTORY		
NAME	DATE	REVISION
R. Braun	5-13-02	Edit Co. Rd. 329

## LEGEND

- |   |  |
|---|--|
| Primitive Road.....   | Agricultural Experimental Station.....   |
| Unimproved Road.....  | Educational Institutions.....  |
| Gravel or Crushed Rock.....   | Public Use Area.....   |
| Asphalt/Bituminous Surface.....                                     | Recreational Facilities.....   |
| Concrete/Block Surface.....   | Rest Area.....   |
| Multiple Lane Undivided Highway.....                                | Ranger Station.....  |
| Divided Highway.....  | Fish Hatchery.....   |
| Interstate Highway with Full Control of Access.....                 | Community Hall.....  |
| Side Roads and Streets.....   | Correctional Institution.....  |
| Interstate-Numbered Highway.....                                    | Tourist Court or Motel.....  |
| US-Numbered Highway.....  | Museum.....  |
| State-Numbered Highway.....   | Fire Station.....  |
| State-Numbered Highway Spur.....                                    | Courthouse.....  |
| State-Numbered Highway Link.....                                    | Armory.....  |
| Interstate Exit Number.....   | Post Office.....   |
| Wide Stream.....  | Highway Maintenance Yard.....  |
| Narrow Stream.....  | Dump Area.....   |
| Irrigation Ditch.....   | Sewage Disposal Plant.....   |
| Reservoir, Pond or Lake.....  | Water Supply Stand Pipe.....   |
| Reservoir, With Dam.....  | Pipe Line.....   |
| Highway Bridge-Any Type (lower 20' span).....                       | Transmission Line.....   |
| Small Bridges-Closely Spaced.....                                   | Power Plant.....   |
| Note: Treatments indicate date within which bridge are grouped..... | Power Substation.....  |
| General Bridge (Steel, Concrete, Arch).....                         | Radio or TV Station.....   |
| Truss Bridge.....   | Pumping Station.....   |
| Pedestrian Underpass.....   | Weight Station or Part of Entry.....   |
| Railroad Overpass.....  | Commercial or Municipal Airport.....   |
| Railroad Underpass.....   | Airport with Paved Runways.....  |
| Dam with Road on Top.....   | State Boundary.....  |
| Cattle Guard.....   | County Boundary.....   |
| Dwelling.....   | Township Line.....   |
| Row of Dwellings.....   | Section Line.....  |
| Cemetery.....   | Corporate Limit Lines.....   |
| Church or Other Religious Institution.....                          | Parks and Other Reservations.....  |
| Church with Cemetery Adjacent.....                                  | Boundary Limits of Area Shown in Enlargements (see enlargements for future)..... |
| Hospital.....   | State Capital.....   |
| Business.....   | County Seat.....   |
| Industrial Plant.....   | Other Cities and Villages.....   |
| Filling Station.....  | Incorporated City or Village.....  |
| Grain Elevator.....   | Triangulation Station.....   |
| Aggregate Pit.....  | Points Between Which Distances Are Measured Indicated Thus.....                  |
|   | Latitude and Longitude.....  |



LAMBERT CONFORMAL CONIC PROJECTION  
1983 NORTH AMERICAN DATUM  
NEBRASKA COORDINATE SYSTEM

