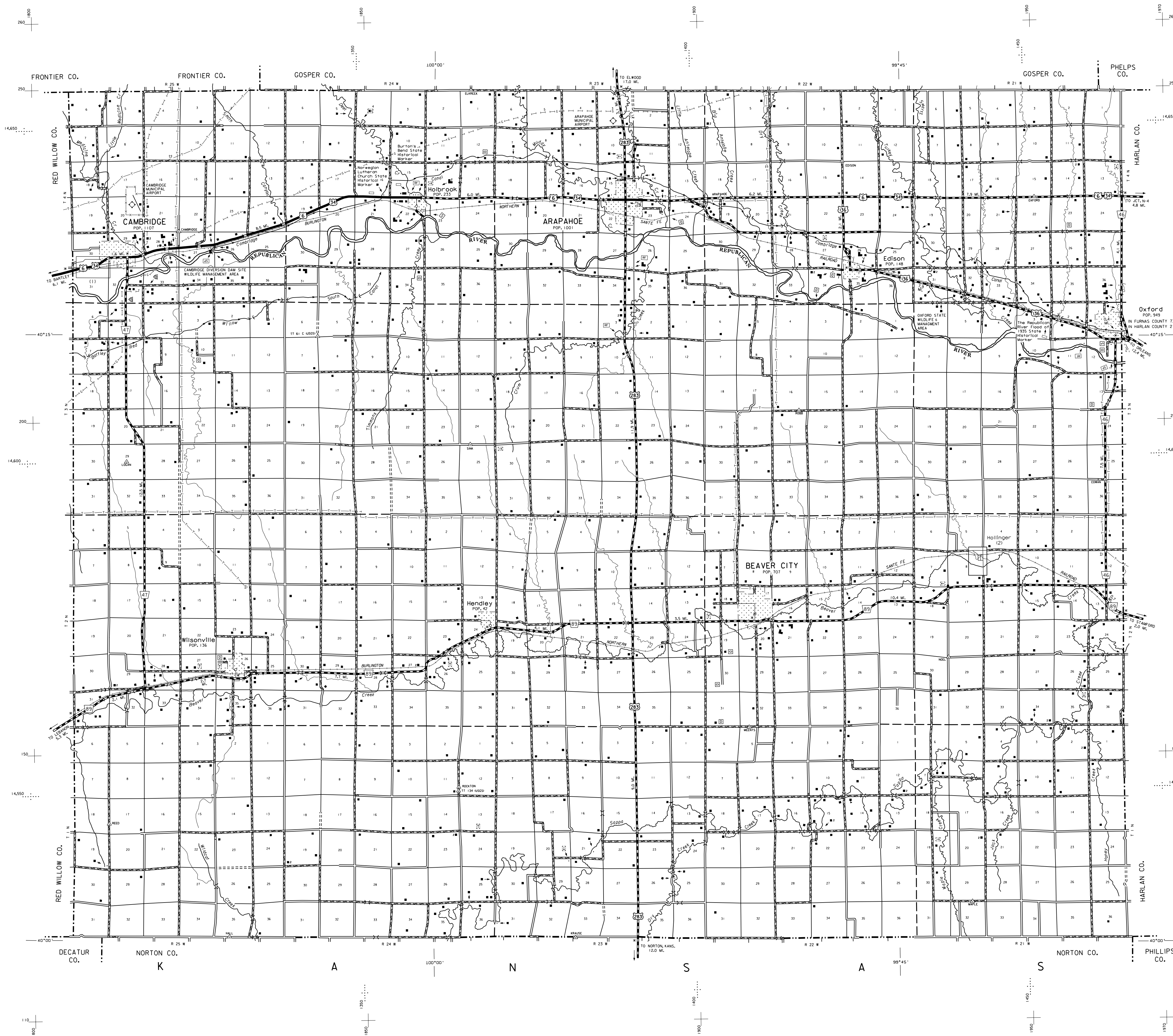
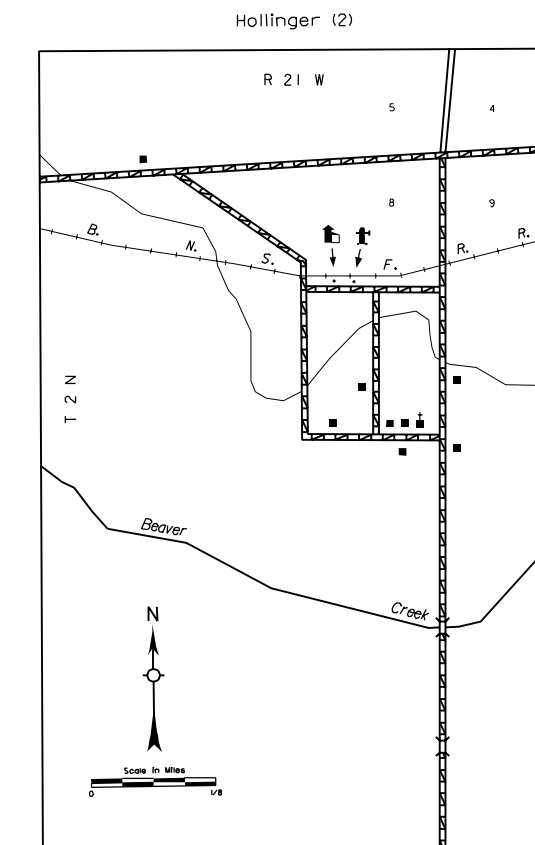
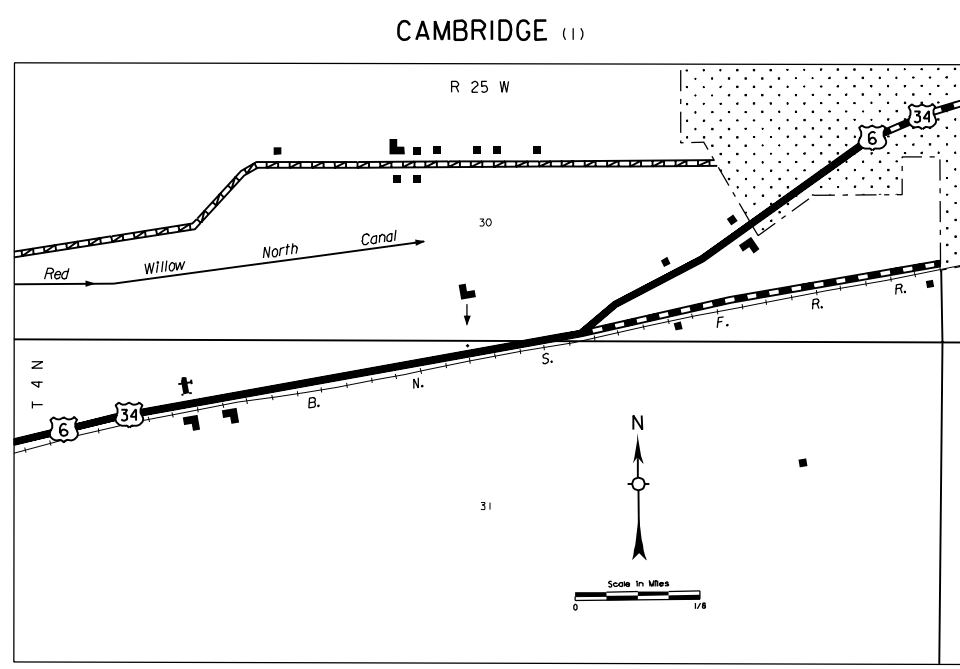
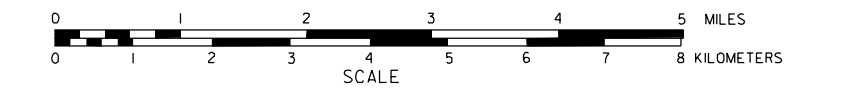


# GENERAL HIGHWAY MAP FURNAS COUNTY NEBRASKA

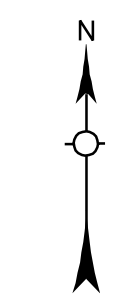
PREPARED BY THE  
DEPARTMENT OF ROADS  
TRANSPORTATION PLANNING DIVISION  
IN COOPERATION WITH THE  
U.S. DEPARTMENT OF TRANSPORTATION  
FEDERAL HIGHWAY ADMINISTRATION

1982



## LEGEND

- |  |   |
|--|---|
| Primitive Road   | Public Use Area   |
| Unimproved Road  | Recreational Facilities   |
| Gravel or Crushed Rock   | Rest Area   |
| Asphalt/Bituminous Surface   | Concrete/Brick Surface  |
| Multiple Lane Undivided Highway  | Divided Highway   |
| Interstate Highway with Full Control of Access                                     | Side Roads and Streets  |
| Interstate-Numbered Highway  | US-Numbered Highway   |
| State-Numbered Highway   | State-Numbered Highway Spur   |
| State-Numbered Highway Link  | Interstate Exit Number  |
| Wide Stream  | Narrow Stream   |
| Irrigation Ditch   | Reservoir, Pond or Lake   |
| Reservoir, With Dam  | Highway Bridge-any Type, over 20' span                                      |
| Small Bridges-Closely Spaced, abutments indicate limits, which bridges are grouped | General Bridge-wood, steel, concrete  |
| Arch Bridge  | Truss Bridge  |
| Pedestrian Underpass   | Pedestrian Overpass   |
| Railroad Overpass  | Railroad Underpass  |
| Railroad   | Dam with Road on Top  |
| Cattle Guard   | Dwelling  |
| Row of Dwellings   | Cemetery  |
| Church or Other Religious Institution  | Church with Cemetery Adjacent   |
| Hospital   | Business  |
| Filling Station  | Grain Elevator  |
| Aggregate Pit  | Agricultural Experimental Station   |
| Educational Institutions   |   |
|  | Some athletic grounds, swimming pools, etc.                                 |
|  | Amateur flea country club, fairgrounds, etc.                                |
|  | Ranger Station  |
|  | Fish Hatchery   |
|  | Community Hall  |
|  | Correctional Institution  |
|  | Tourist Court or Motel  |
|  | Monument-Small  |
|  | Museum  |
|  | Firestation   |
|  | Courthouse  |
|  | Armory  |
|  | Post Office   |
|  | Highway Maintenance Yard  |
|  | Dump Area   |
|  | Sewage Disposal Plant   |
|  | Water Supply Stand Pipe   |
|  | Pipe Line - Irrigation  |
|  | Transmission Line   |
|  | Power Plant   |
|  | Power Substation  |
|  | Radio or TV Station   |
|  | Pumping Station   |
|  | Weight Station or Part of Entry   |
|  | Commercial or Municipal Airport   |
|  | Airport with Paved Runways  |
|  | State Boundary  |
|  | County Boundary   |
|  | Township Line   |
|  | Section Line  |
|  | Corporate Limit Lines   |
|  | Parks and Other Reservations  |
|  | Boundary Limits of Area Shown in Enlargements - See enlargements for curves |
|  | State Capital   |
|  | County Seat   |
|  | Other Cities and Villages   |
|  | Incorporated City or Village  |
|  | Triangulation Station   |
|  | Points Between Which Distances Are Measured Indicated Thus                  |
|  | Latitude and Longitude  |
|  | Nebraska Coordinate System (in thousands of feet)                           |
|  | Universal Transverse Mercator Grid (in thousands of feet)                   |



LAMBERT CONFORMAL CONIC PROJECTION  
1927 NORTH AMERICAN DATUM  
NEBRASKA COORDINATE SYSTEM-SOUTH ZONE

