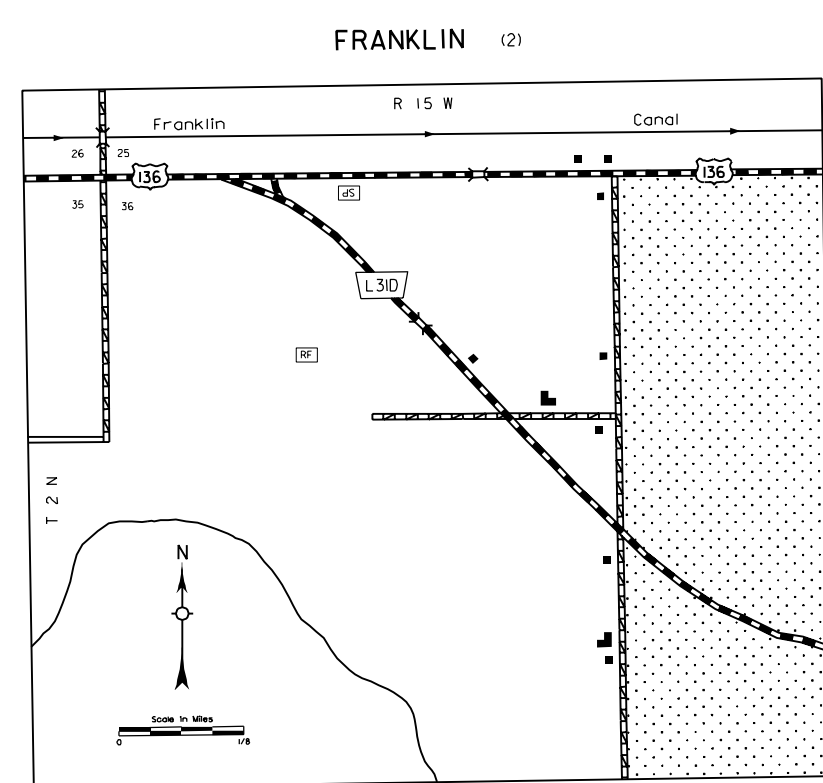
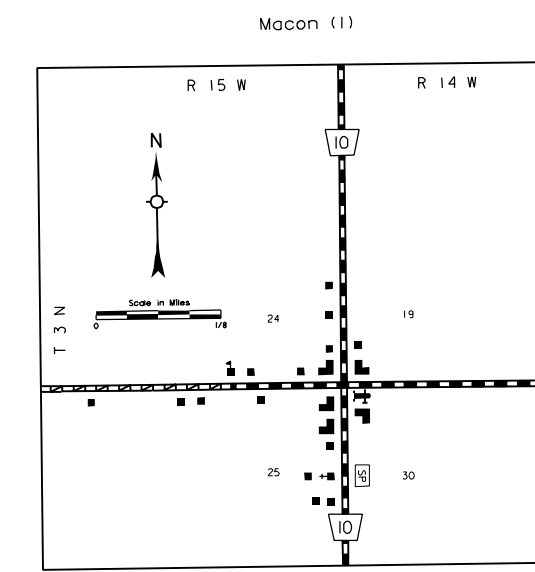
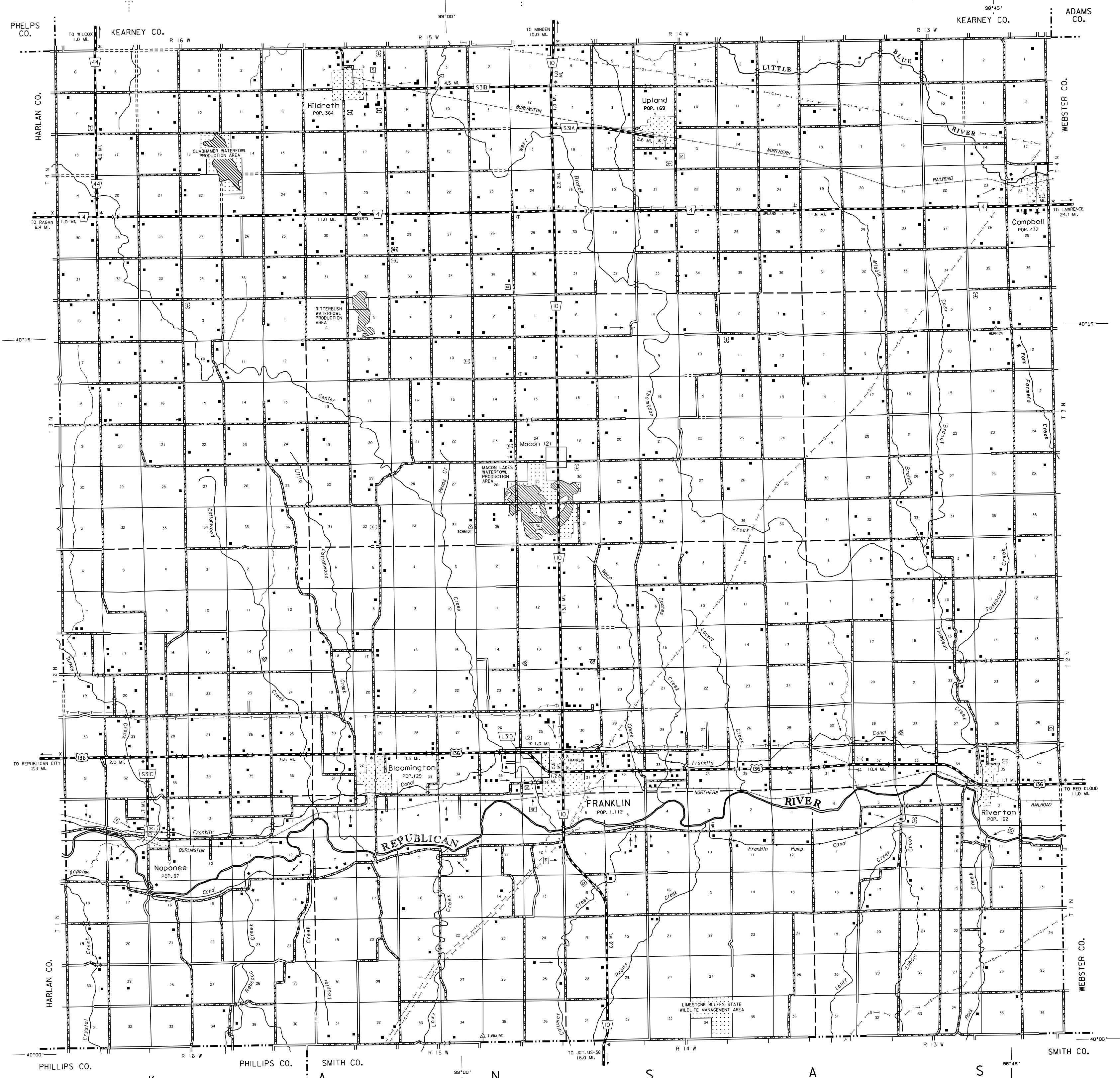
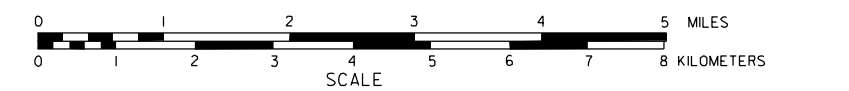


# GENERAL HIGHWAY MAP FRANKLIN COUNTY NEBRASKA

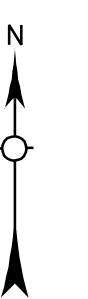
PREPARED BY THE  
DEPARTMENT OF ROADS  
TRANSPORTATION PLANNING DIVISION  
IN COOPERATION WITH THE  
U.S. DEPARTMENT OF TRANSPORTATION  
FEDERAL HIGHWAY ADMINISTRATION

1981



### LEGEND

- |  |  |
|--|--|
| Primitive Road                                 | Public Use Area  |
| Unimproved Road                                | Recreational Facilities                                    |
| Gravel or Crushed Rock                         | Rest Area  |
| Asphalt/Bituminous Surface                     | Ranger Station   |
| Concrete/Brick Surface                         | Flap Hatcher   |
| Multiple Lane Undivided Highway                | Community Hall   |
| Divided Highway                                | Correctional Institution                                   |
| Interstate Highway with Full Control of Access | Tourist Court or Motel                                     |
| State-Numbered Highway                         | Monument-Small   |
| State-Numbered Highway Spur                    | Museum   |
| State-Numbered Highway Link                    | Firestation  |
| Interstate Exit Number                         | Courthouse   |
| Wide Stream                                    | Post Office  |
| Narrow Stream                                  | Post Office  |
| Irrigation Ditch                               | Highway Maintenance Yard                                   |
| Reservoir, Pond or Lake                        | Dump Area  |
| Reservoir, With Dam                            | Sewage Disposal Plant                                      |
| Highway Bridge-Any Type                        | Water Supply Stand Pipe                                    |
| Small Bridges-Closely Spaced                   | Pipe Line (Petroleum)                                      |
| General Bridge                                 | Transmission Line  |
| Arch Bridge                                    | Power Plant  |
| Truss Bridge                                   | Power Substation   |
| Pedestrian Underpass                           | Radio or TV Station  |
| Pedestrian Overpass                            | Pumping Station  |
| Railroad Overpass                              | Weight Station or Point of Entry                           |
| Railroad Underpass                             | Commercial or Municipal Airport                            |
| Railroad                                       | Airport with Paved Runways                                 |
| Dam with Road on Top                           | State Boundary   |
| Cattle Guard                                   | County Boundary  |
| Row of Dwellings                               | Township Line  |
| Cemetery                                       | Section Line   |
| Church or Other Religious Institution          | Corporate Limit Lines                                      |
| Church with Cemetery Adjacent                  | Parks and Other Reservations                               |
| Hospital                                       | Boundary Limits of Area Shown in Enlargements              |
| Business                                       | State Capital  |
| Industrial Plant                               | County Seat  |
| Filling Station                                | Other Cities and Villages                                  |
| Grain Elevator                                 | Incorporated City or Village                               |
| Aggregate PIT                                  | Triangulation Station                                      |
| Agricultural Experimental Station              | Points Between Which Distances Are Measured Indicated Thus |
| Educational Institutions                       | Latitude and Longitude                                     |
|  | Nebraska Coordinate System                                 |
|  | Universal Transverse Mercator Grid                         |



LAMBERT CONFORMAL CONIC PROJECTION  
1927 NORTH AMERICAN DATUM  
NEBRASKA COORDINATE SYSTEM-SOUTH ZONE

