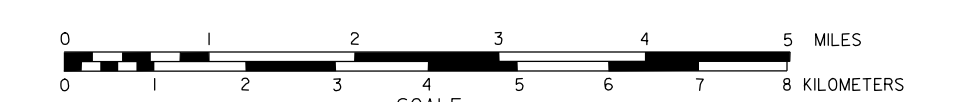


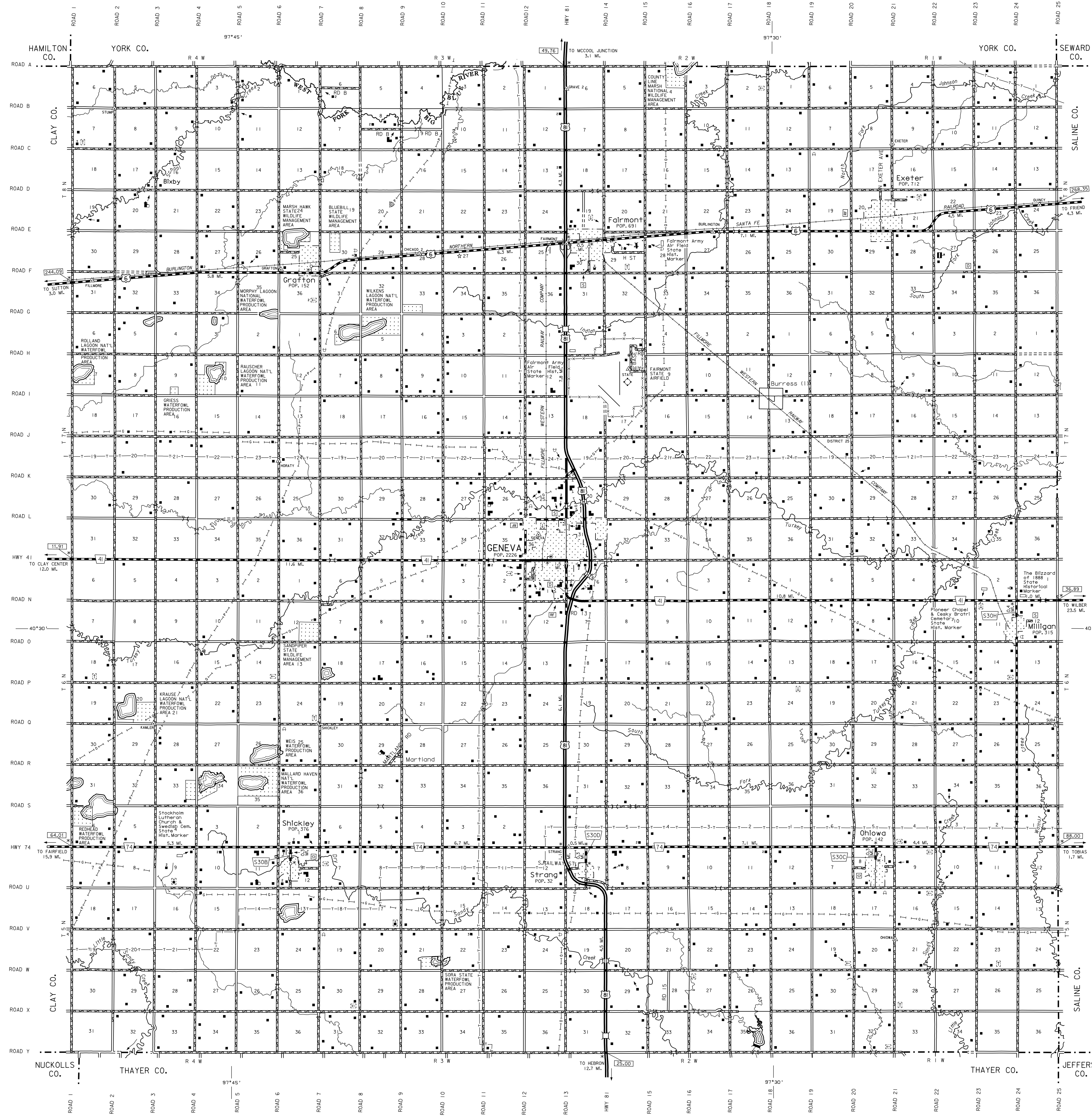
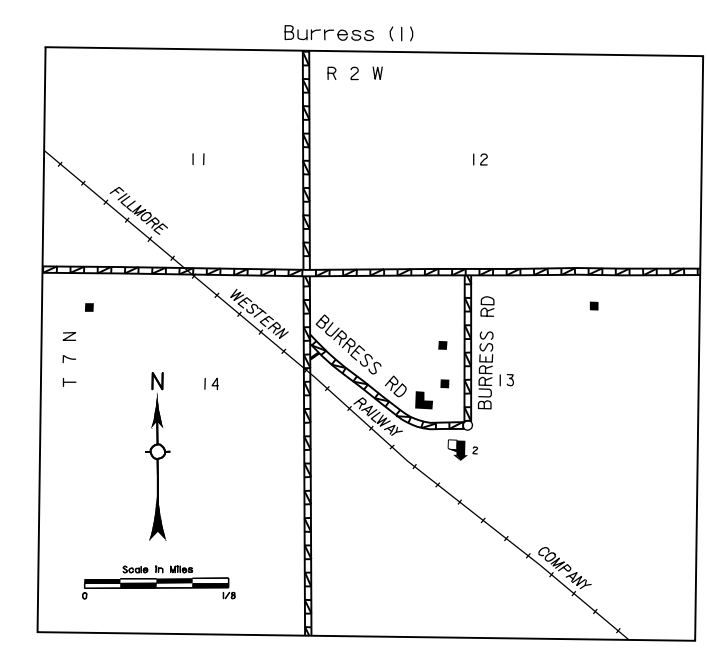
GENERAL HIGHWAY MAP FILLMORE COUNTY NEBRASKA

PREPARED BY THE
DEPARTMENT OF ROADS
INFORMATION SYSTEMS DIVISION
IN COOPERATION WITH THE
U.S. DEPARTMENT OF TRANSPORTATION
FEDERAL HIGHWAY ADMINISTRATION



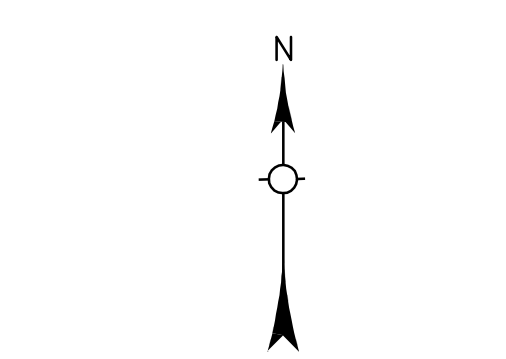
INVENTORY DATE:
2003

REVISION HISTORY		
NAME	DATE	REVISION
LAUREN SMITH	OCT. 2003	FILE SYSTEM
ELMER HESSEMER	SEPTEMBER 2003	CO. HWY SUPERINTENDENT (NEW)
GLENN WILLIAMS	AUGUST 2004	COUNTY



LEGEND

Primitive Road	Aggregate Pit
Unimproved Road	Agricultural Experimental Station
Gravel or Crushed Rock	Educational Institutions
Asphalt/Bituminous Surface	Public Use Area
Multiple Lane Undivided Highway	Recreational Facilities
Concrete/Asphalt Surface	Rest Area
Multiple Lane Undivided Highway	Ranger Station
Controlled Access	Flah Hatchery
Divided Highway	Community Hall
Interstate Highway with Full Control of Access	Correctional Institution
State-Numbered Highway	Tourist Court or Motel
US-Numbered Highway	Monument-Small
State-Numbered Highway Spur	Museum
Highway Reference Post Number	Firestation
Interstate Exit Number	Courthouse
Wide Stream	Army
Narrow Stream	Post Office
Irrigation Ditch	Highway Maintenance Yard
Reservoir, Pond or Lake	Dump Area
Reservoir, With Dam	Sewage Disposal Plant
Highway Bridge-Any Type	Water Supply Stand Pipe
Lower Span	Pipe Line
Small Bridges-Closely Spaced	Transmission Line
Treatment Islands along with bridge or groups	Power Plant
General Bridge - across stream/creeks	Power Substation
Arch Bridge	Radio or TV Station
Truss Bridge	Pumping Station
Pedestrian Underpass	Weight Station or Part of Entry
Railroad Overpass	Commercial or Multi-Use Airport
Railroad Underpass	Airport with Paved Runways
Railroad	State Boundary
Dam with Road on Top	County Boundary
Cattle Guard	Township Line
Dwelling	Section Line
Row of Dwellings	Corporate Limit Lines
Cemetery	Parks and Other Reservations
Church or Other Religious Institution	Boundary Limits of Area Shown in Enlargements - see enlargements for details
Church with Cemetery Adjacent	State Capital
Hospital	County Seat
Business	Other Cities and Villages
Industrial Plant	Incorporated City or Village
Filling Station	Triangulation Station
Grain Elevator	Points Between Which Distances Are Measured Indicated Thus
	Latitude and Longitude



LAMBERT CONFORMAL CONIC PROJECTION
1883 NORTH AMERICAN DATUM
NEBRASKA COORDINATE SYSTEM

