

GENERAL HIGHWAY MAP DOUGLAS COUNTY NEBRASKA

PREPARED BY THE
DEPARTMENT OF ROADS
INFORMATION SYSTEMS DIVISION
IN COOPERATION WITH THE
U.S. DEPARTMENT OF TRANSPORTATION
FEDERAL HIGHWAY ADMINISTRATION

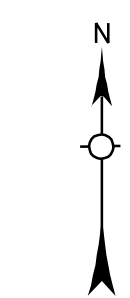


INVENTORY DATE:
1986

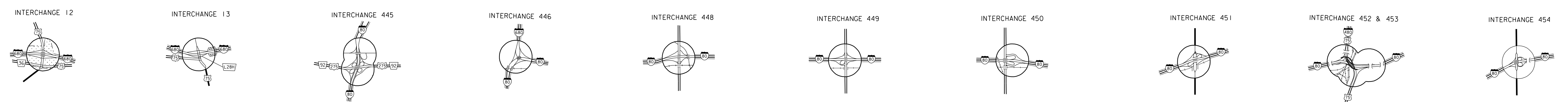
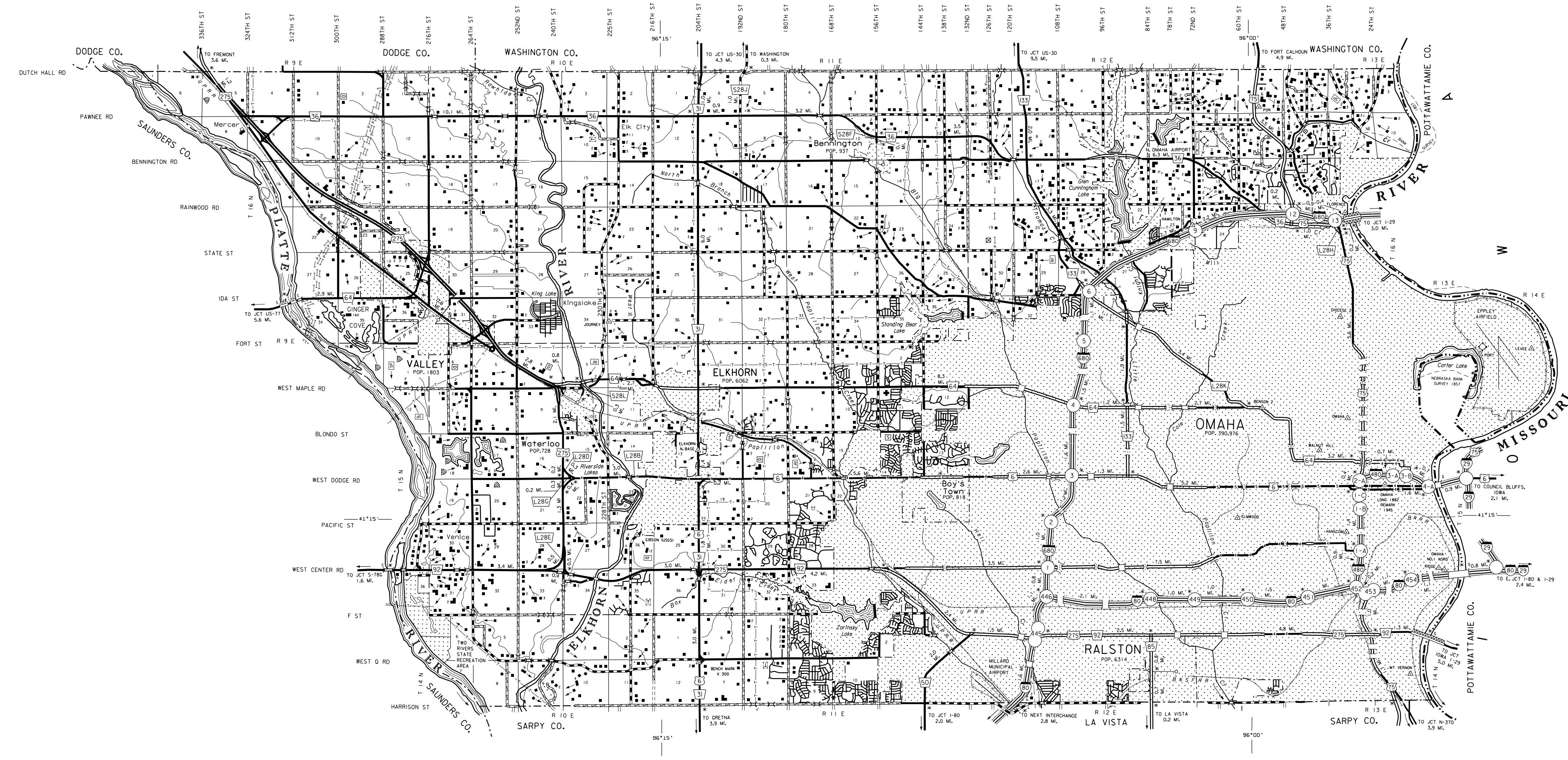
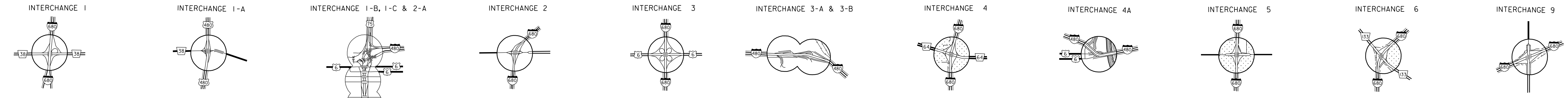
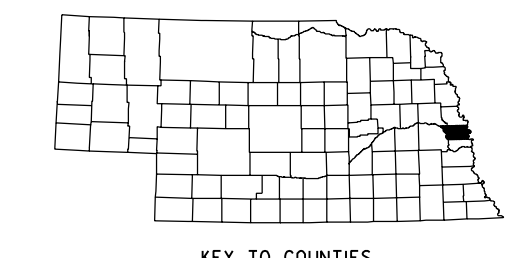
REVISION HISTORY		
NAME	DATE	REVISION
C. VESERNA	DEC. 1983	COUNTY
A. WEEKLY	JUNE 2000	OMAHA CORP. LIMITS
A. WEEKLY	JUNE 2000	ST. SYSTEM
R. SWAN	AUG. 2003	INT. ZIPS, ALIGN.

LEGEND

- | | | | |
|--|-------|--|-------|
| Primitive Road | | Agricultural Experimental Station | |
| Unimproved Road | | Educational Institutions | |
| Gravel or Crushed Rock | | Public Use Area | |
| Asphalt/Bituminous Surface | | Recreational Facilities | |
| Concrete/Brick Surface | | Rest Area | |
| Multiple Lane Undivided Highway | | Interstate Highway with Full Control of Access | |
| Divided Highway | | Side Roads and Streets | |
| Interstate Highway with Full Control of Access | | 911 NAMED/Numbered Roads | |
| Interstate Exit Number | | Interstate-Numbered Highway | |
| Wide Stream | | US-Numbered Highway | |
| Narrow Stream | | State-Numbered Highway | |
| Irrigation Ditch | | State-Numbered Highway Spur | |
| Reservoir, Pond or Lake | | State-Numbered Highway Link | |
| Reservoir, With Dam | | Highway Maintenance Yard | |
| Highway Bridge-Any Type | | Dump Area | |
| Small Bridges-Closely Spaced | | Sewage Disposal Plant | |
| General Bridge | | Water Supply Stand Pipe | |
| Arch Bridge | | Pipe Line | |
| Truss Bridge | | Transmission Line | |
| Pedestrian Overpass | | Power Plant | |
| State Boundary | | Radio or TV Station | |
| County Boundary | | Pumping Station | |
| Township Line | | Align Station or Part of Entry | |
| Section Line | | Commercial or Municipal Airport | |
| Corporate Limit Lines | | Airport with Paved Runways | |
| Cattle Guard | | State Boundary | |
| Dwelling | | County Boundary | |
| Row of Dwellings | | Township Line | |
| Cemetery | | Section Line | |
| Church or Other Religious Institution | | Corporate Limit Lines | |
| Church with Cemetery Adjacent | | Parks and Other Reservations | |
| Hospital | | Boundary Limits of Area Shown in Enlargements | |
| Business | | State Capital | |
| Industrial Plant | | County Seat | |
| Filling Station | | Other Cities and Villages | |
| Grain Elevator | | Incorporated City or Village | |
| Aggregate Pit | | Triangulation Station | |
| | | Points Between Which Distances Are Measured Indicated Thus | |
| | | Latitude and Longitude | |



LAMBERT CONFORMAL CONIC PROJECTION
1983 NORTH AMERICAN DATUM
NEBRASKA COORDINATE SYSTEM



POPULATION AS OF 1990 CENSUS
STATE HIGHWAYS CORRECTED TO 1993