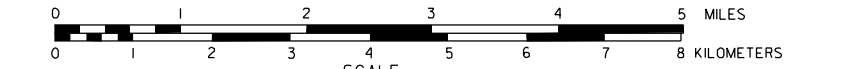


GENERAL HIGHWAY MAP DODGE COUNTY NEBRASKA

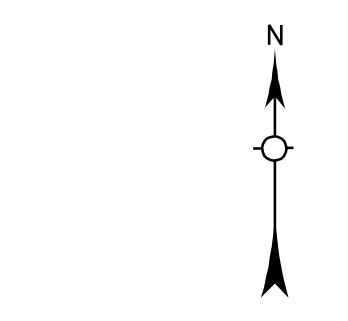
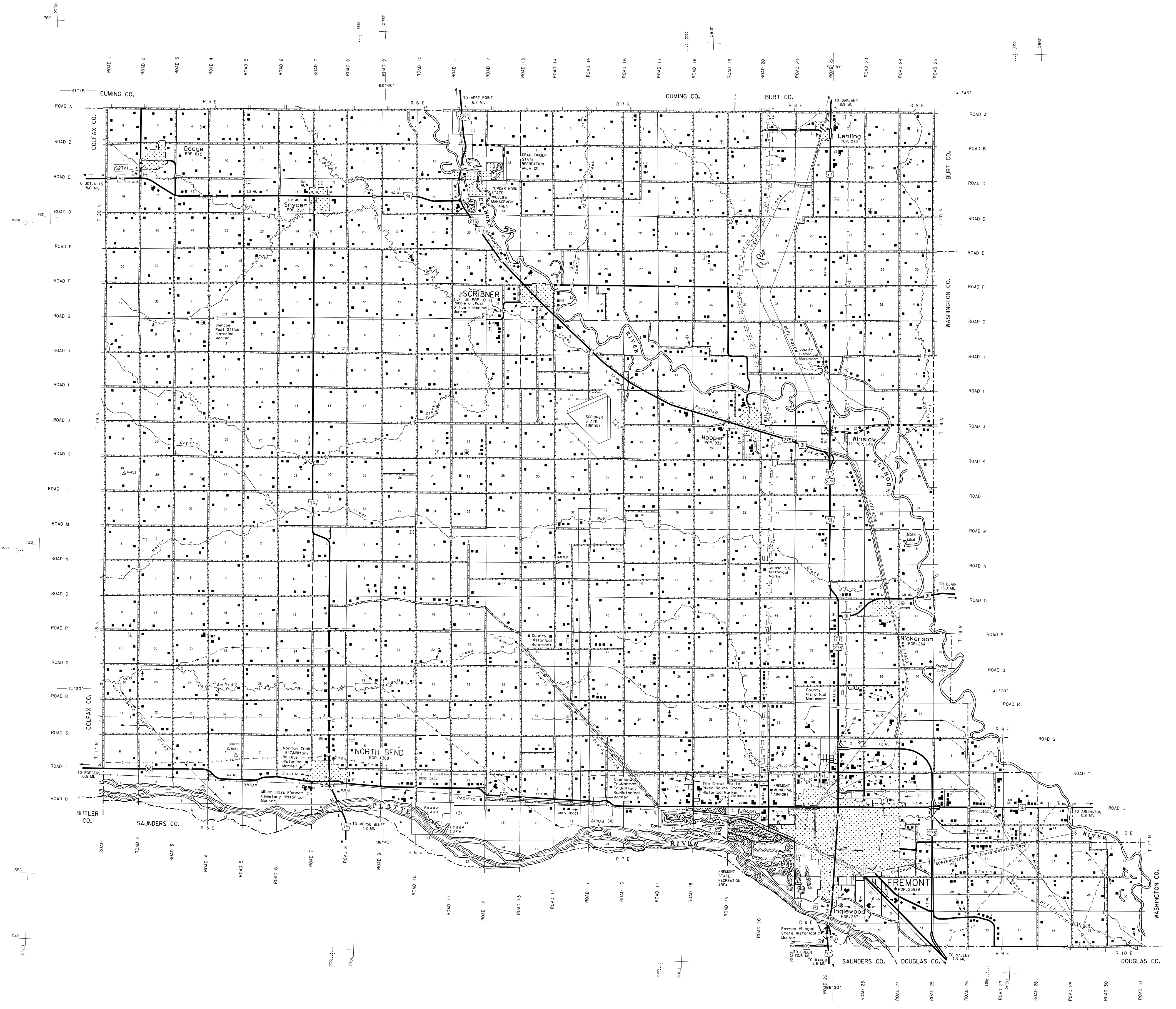
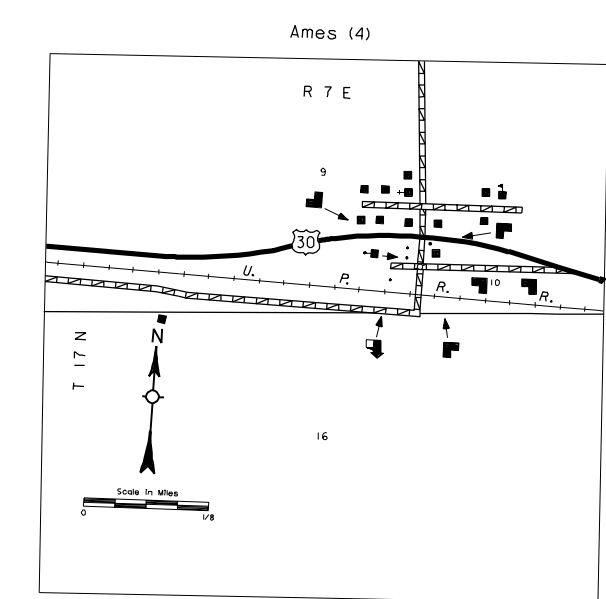
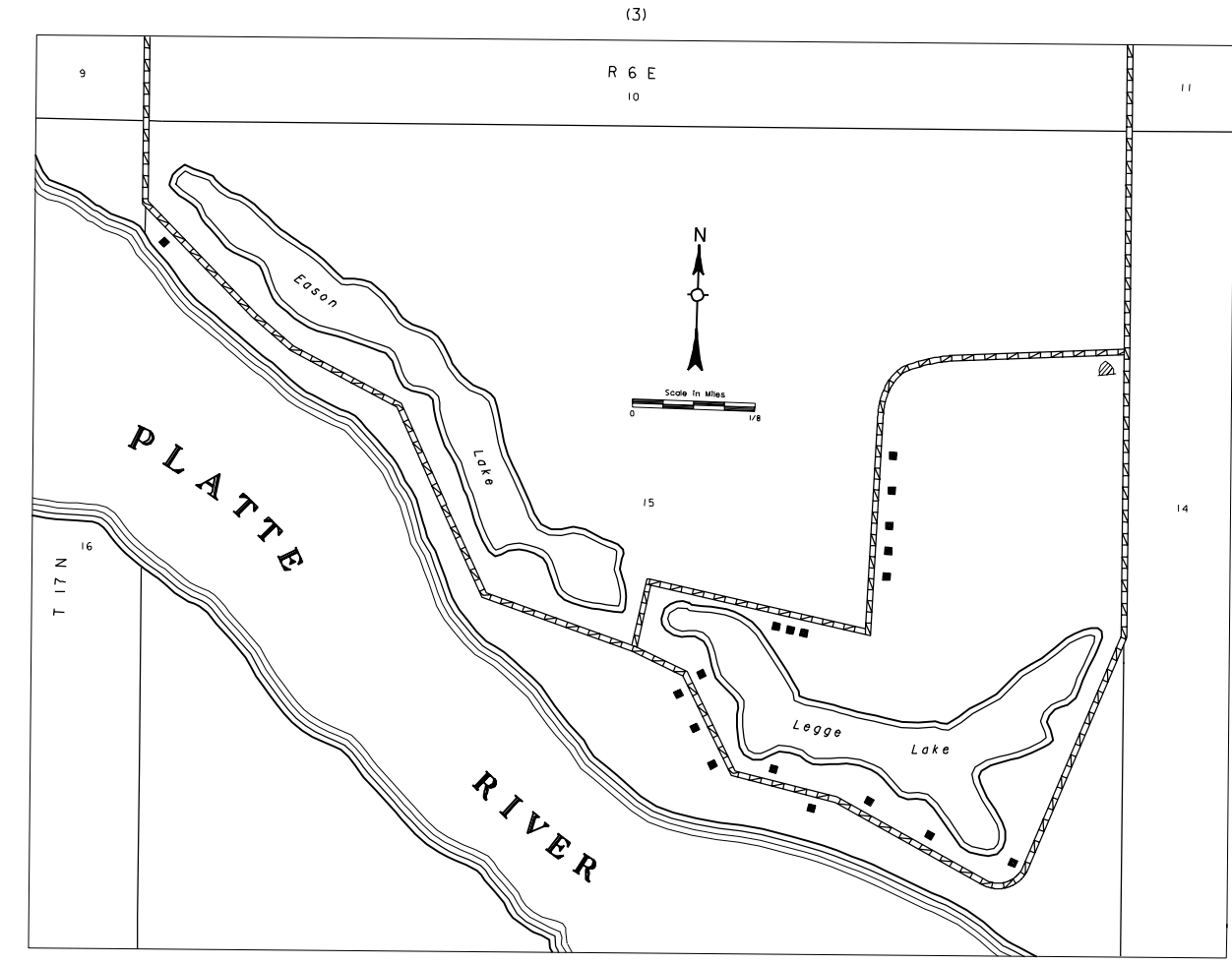
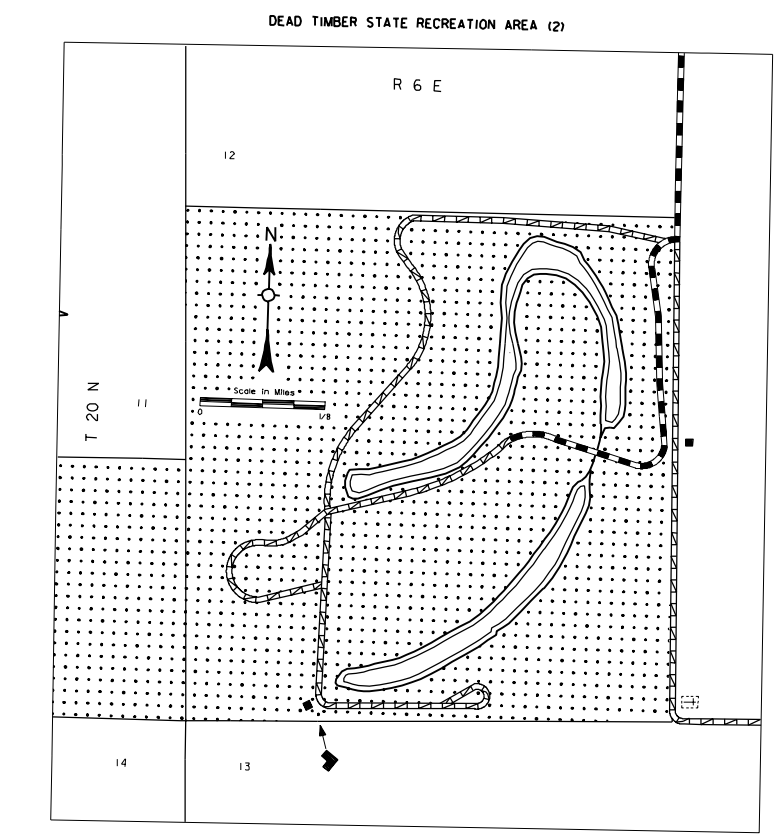
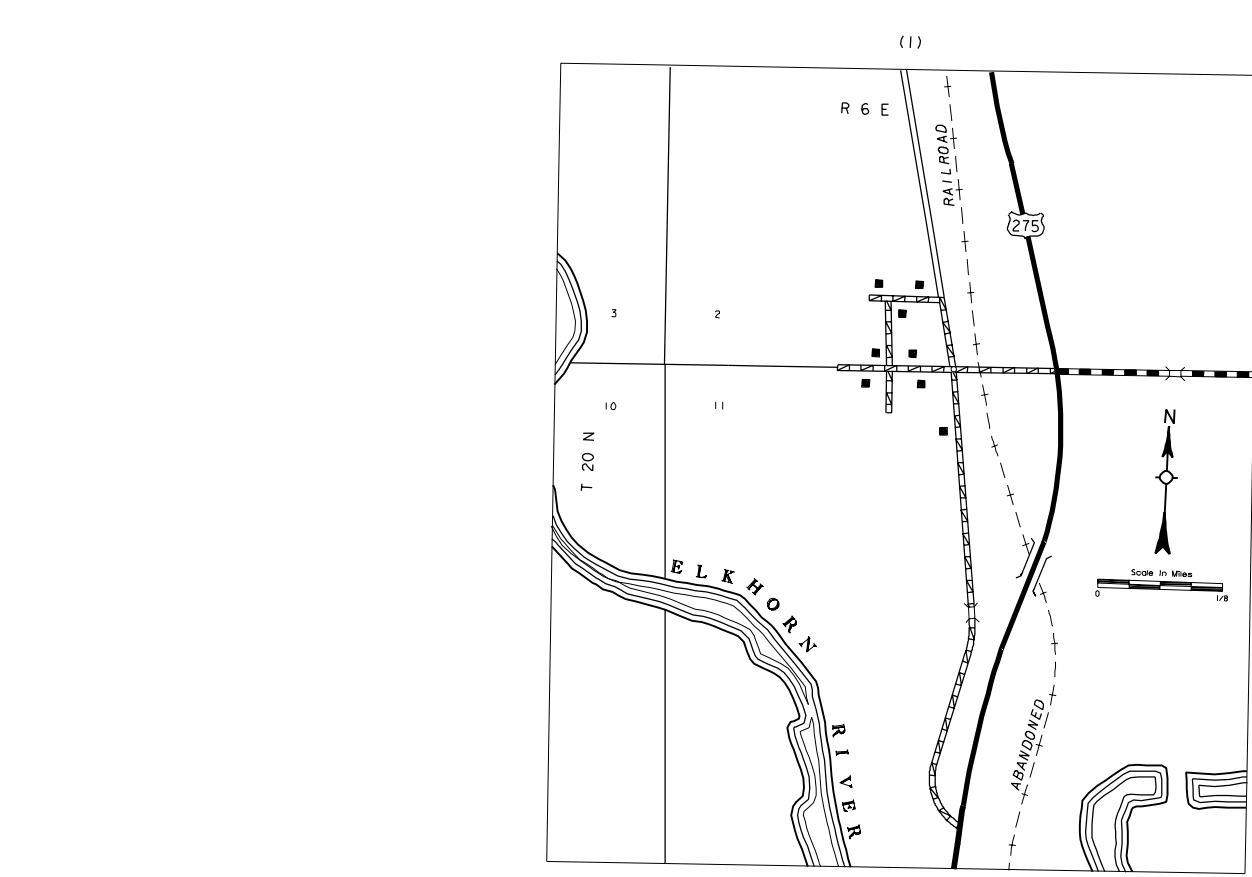
PREPARED BY THE
DEPARTMENT OF ROADS
TRANSPORTATION PLANNING DIVISION
IN COOPERATION WITH THE
U.S. DEPARTMENT OF TRANSPORTATION
FEDERAL HIGHWAY ADMINISTRATION
1984



REVISION HISTORY		
NAME	DATE	REVISION
L. COLSMITH	OCT. 2000	511 SYSTEM

LEGEND

- Primitive Road
- Unimproved Road
- Gravel or Crushed Rock
- Non Rigid Pavement, or Asphalt
- Rigid Pavement (P.C.C., ASPH. or BRICK)
- Multiple Lane Undivided Highways
- Divided Highway
- Interstate Highway with Full Control of Access
- Side Roads and Streets
- Interstate-Numbered Highway
- US-Numbered Highway
- State-Numbered Highway
- State-Numbered Highway Spur
- State-Numbered Highway Link
- Wide Stream
- Narrow Stream
- Irrigation Ditch
- Reservoir, Pond or Lake
- Reservoir, With Dam
- Highway Bridge-Any Type
- Small Bridges-Closely Spaced
- General Bridge
- Arch Bridge
- Truss Bridge
- Pedestrian Underpass
- Railroad Overpass
- Railroad Underpass
- Railroad
- Dam with Road on Top
- Cattle Guard
- Dwelling
- Row of Dwellings
- Cemetery
- Church or Other Religious Institution
- Church with Cemetery Adjacent
- Hospital
- Business
- Industrial Plant
- Filling Station
- Grain Elevator
- Aggregate Pit
- Agricultural Experimental Station
- Educational Institutions
- Public Use Area
- Recreational Facilities
- Rest Area
- Ranger Station
- Fish Hatchery
- Community Hall
- Correctional Institution
- Tourist Court or Motel
- Monument-Small
- Museum
- Firestation
- Courthouse
- Armory
- Post Office
- Highway Maintenance Yard
- Dump Area
- Sewage Disposal Plant
- Water Supply Stand Pipe
- Pipe Line
- Transmission Line
- Power Plant
- Power Substation
- Radio or TV Station
- Pumping Station
- Weight Station or Port of Entry
- Commercial or Municipal Airport
- Airport with Paved Runways
- State Boundary
- County Boundary
- Township Line
- Section Line
- Corporate Limit Lines
- Parks and Other Reservations
- Boundary Limits of Area Shown in Enlargements (see enlargements for details)
- State Capital
- County Seat
- Other Cities and Villages
- Incorporated City or Village
- Trangulation Station
- Points Between Which Distances Are Measured (indicated "True")
- Latitude and Longitude
- Nebraska Coordinate System (in thousands of feet)
- Universal Transverse Mercator Grid (in thousands of feet)



LAMBERT CONFORMAL CONIC PROJECTION
1927 NORTH AMERICAN DATUM
NEBRASKA COORDINATE SYSTEM-SOUTH ZONE

