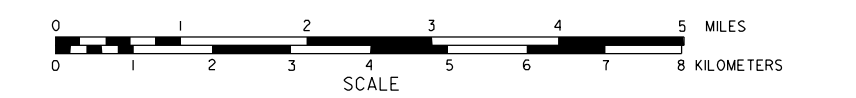


GENERAL HIGHWAY MAP DAWES COUNTY NORTH HALF NEBRASKA

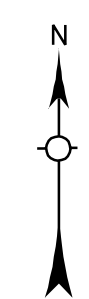
PREPARED BY THE
DEPARTMENT OF ROADS
TRANSPORTATION PLANNING DIVISION
IN COOPERATION WITH THE
U.S. DEPARTMENT OF TRANSPORTATION
FEDERAL HIGHWAY ADMINISTRATION

1986



LEGEND

- | | |
|--|--|
| Primitive Road | Public Use Area |
| Unimproved Road | Recreational Facilities |
| Gravel or Crushed Rock | Rest Area |
| Asphalt/Bituminous Surface | Ranger Station |
| Concrete/Brick Surface | Fish Hatchery |
| Multiple Lane Undivided Highway | Community Hall |
| Divided Highway | Correctional Institution |
| Interstate Highway with Full Control of Access | Tourist Court or Motel |
| State-Numbered Highway | Monument-Small |
| State-Numbered Highway Spur | Museum |
| State-Numbered Highway Link | Fire Station |
| Interstate Exit Number | Courthouse |
| Wide Stream | Post Office |
| Narrow Stream | Highway Maintenance Yard |
| Irrigation Ditch | Dump Area |
| Reservoir, Pond or Lake | Sewage Disposal Plant |
| Reservoir, With Dam | Water Supply Stand Pipe |
| Highway Bridge-Any Type | Pipe Line |
| Lower Span | Transmission Line |
| Small Bridges-Closely Spaced | Power Plant |
| Large Bridges | Power Substation |
| General Bridge | Radio or TV Station |
| Truss Bridge | Pumping Station |
| Pedestrian Underpass | Weight Station or Part of Entry |
| Pedestrian Overpass | Commercial or Municipal Airport |
| Railroad Overpass | Airport with Paved Runways |
| Railroad Underpass | State Boundary |
| Park and Other Reservations | County Boundary |
| Boundary Limits of Area Shown in Error | Township Line |
| Cattle Guard | Section Line |
| Dwelling | Corporate Limit Lines |
| Row of Dwellings | Parks and Other Reservations |
| Cemetery | Boundary Limits of Area Shown in Error |
| Church or Other Religious Institution | State Capital |
| Church with Cemetery Adjacent | County Seat |
| Hospital | Other Cities and Villages |
| Business | Incorporated City or Village |
| Industrial Plant | Triangulation Station |
| Filling Station | Points Between Which Distances Are Measured Indicated Thus |
| Grain Elevator | Latitude and Longitude |
| Aggregate Pit | Nebraska Coordinate System |
| Agricultural Experimental Station | in thousands of feet |
| Educational Institutions | Universal Transverse Mercator Grid |
| | in thousands of feet |



LAMBERT CONFORMAL CONIC PROJECTION
1927 NORTH AMERICAN DATUM
NEBRASKA COORDINATE SYSTEM-SOUTH ZONE



KEY TO COUNTIES

