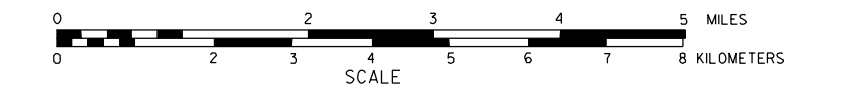


# GENERAL HIGHWAY MAP DAKOTA COUNTY NEBRASKA

PREPARED BY THE  
DEPARTMENT OF ROADS  
INFORMATION SYSTEMS DIVISION

IN COOPERATION WITH THE  
U.S. DEPARTMENT OF TRANSPORTATION  
FEDERAL HIGHWAY ADMINISTRATION

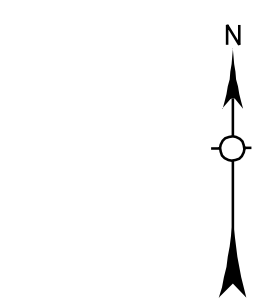
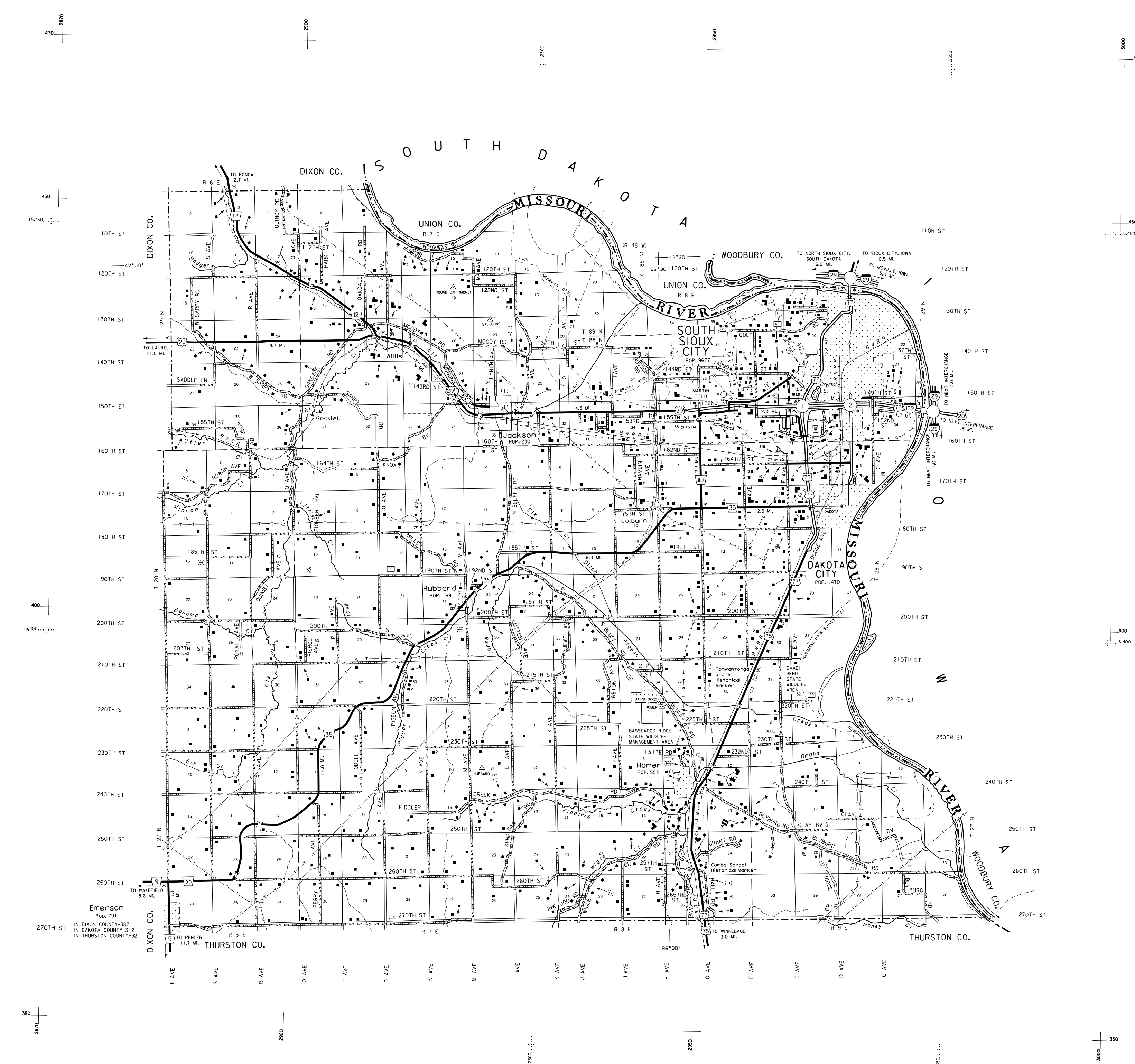
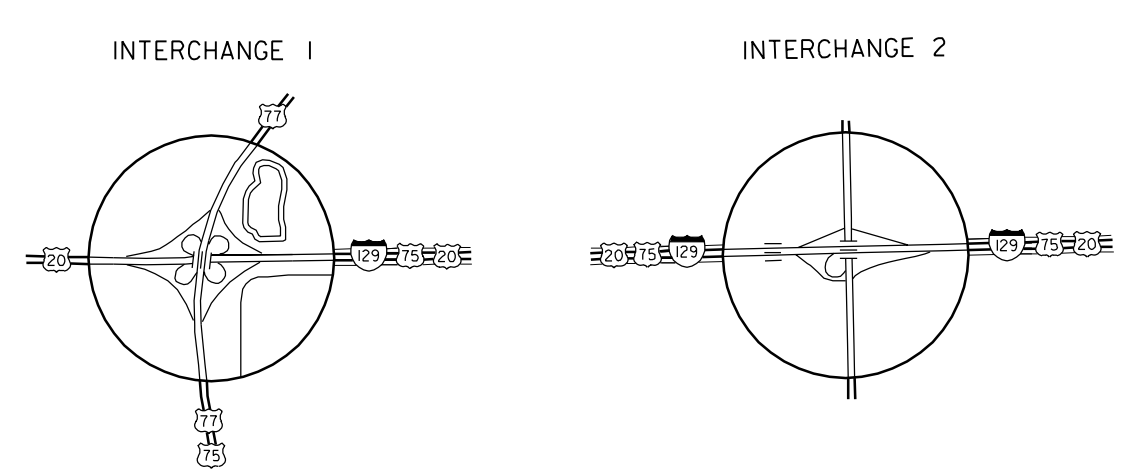
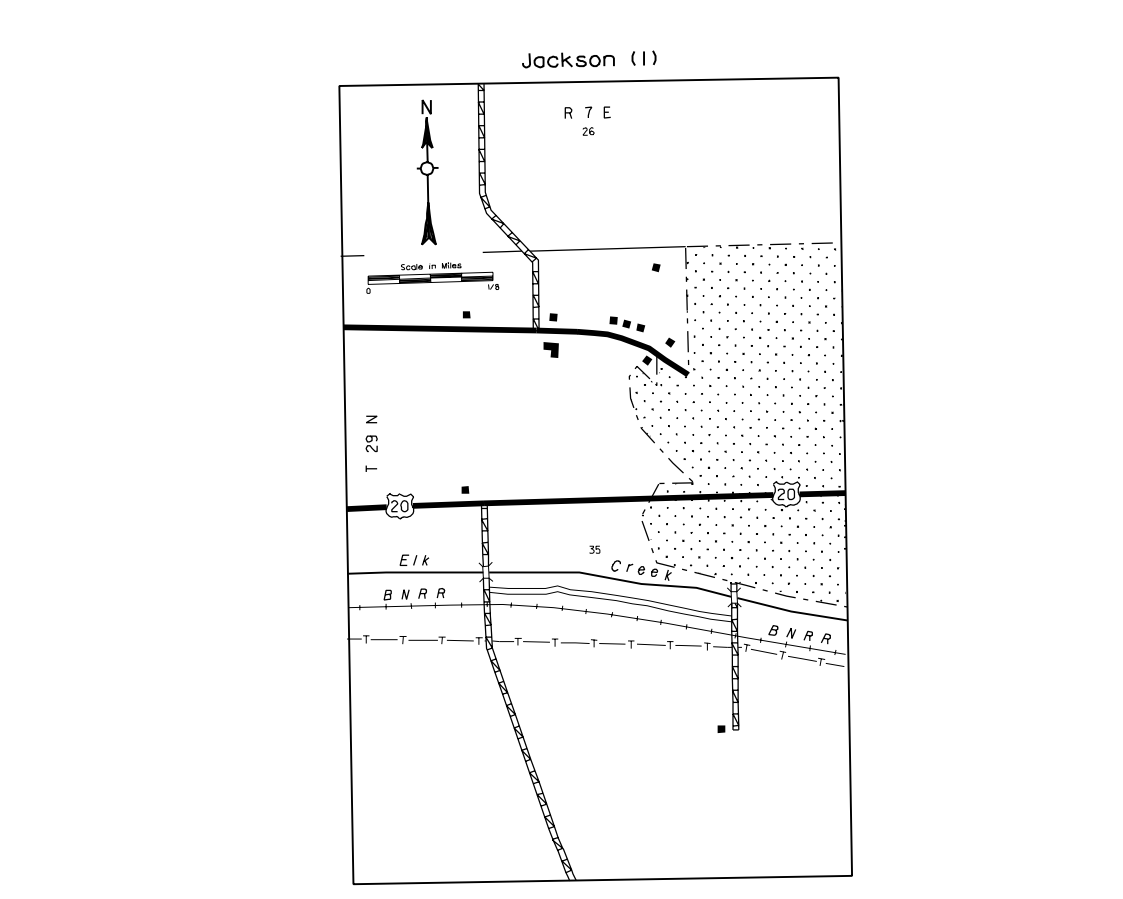
1989



REVISION HISTORY		
NAME	DATE	REVISION
L. GOLDSMITH	04-07-83	STI SYSTEM

### LEGEND

- |  |   |
|--|---|
| Primitive Road                                 | Public Use Area   |
| Unimproved Road                                | Recreational Facilities   |
| Gravel or Crushed Rock                         | Rest Area   |
| Non Rigid Pavement (Br. or Asph.)              | Ranger Station  |
| Rigid Pavement (Asph. or Brk.)                 | Fish Hatchery   |
| Multiple Lane Undivided Highway                | Community Hall  |
| Divided Highway                                | Correctional Institution  |
| Interstate Highway with Full Control of Access | Tourist Court or Motel  |
| Side Roads and Streets                         | Monument - Small  |
| Interstate-Numbered Highway                    | Museum  |
| US-Numbered Highway                            | Firestation   |
| State-Numbered Highway                         | Courthouse  |
| State-Numbered Highway Spur                    | Armory  |
| State-Numbered Highway Link                    | Post Office   |
| Interstate Exit Number                         | Highway Maintenance Yard  |
| Wide Stream                                    | Dump Area   |
| Narrow Stream                                  | Sewage Disposal Plant   |
| Irrigation Ditch                               | Water Supply Stand Pipe   |
| Reservoir, Pond or Lake                        | Pipe Line   |
| Reservoir, With Dam                            | Transmission Line   |
| Highway Bridge - Any Type                      | Power Plant   |
| Small Bridges - Closely Spaced                 | Power Substation  |
| Large Bridges - Closely Spaced                 | Radio or TV Station   |
| General Bridge                                 | Pumping Station   |
| Arch Bridge                                    | Weight Station or Port of Entry   |
| Truss Bridge                                   | Commercial or Municipal Airport   |
| Pedestrian Overpass                            | Airport with Paved Runways  |
| Railroad Overpass                              | State Boundary  |
| Railroad Underpass                             | County Boundary   |
| Railroad                                       | Township Line   |
| Dam with Road on Top                           | Section Line  |
| Cattle Guard                                   | Corporate Limit Lines   |
| Dwelling                                       | Parks and Other Reservations  |
| Row of Dwellings                               | Boundary Limits of Area Shown in Enlargements has enlargements for cultural |
| Cemetery                                       | State Capital   |
| Church or Other Religious Institution          | County Seat   |
| Church with Cemetery Adjacent                  | Other Cities and Villages   |
| Hospital                                       | Incorporated City or Village  |
| Business                                       | Trilateration Station   |
| Industrial Plant                               | Points Between Which Distances Are Measured Indicated Thus                  |
| Filling Station                                | Latitude and Longitude  |
| Grain Elevator                                 | Nebraska Coordinate System in Thousands of Feet                             |
| Aggregate Pit                                  | Universal Transverse Mercator Grid in Thousands of Feet                     |
| Educational Institutions                       |   |



LAMBERT CONFORMAL CONIC PROJECTION  
1983 NORTH AMERICAN DATUM  
NEBRASKA COORDINATE SYSTEM

