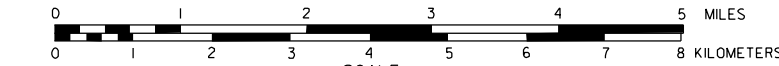


# GENERAL HIGHWAY MAP CHEYENNE COUNTY NEBRASKA

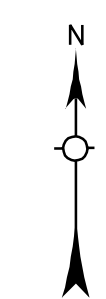
PREPARED BY THE  
DEPARTMENT OF ROADS  
TRANSPORTATION PLANNING DIVISION  
IN COOPERATION WITH THE  
U.S. DEPARTMENT OF TRANSPORTATION  
FEDERAL HIGHWAY ADMINISTRATION  
1985



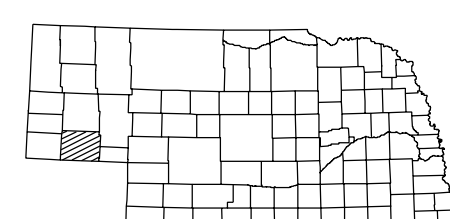
REVISION HISTORY		
NAME	DATE	REVISION
L. GOLDSMITH	OCT. 2000	511 SYSTEM

## LEGEND

- |   |   |
|---|---|
| Primitive Road  | Public Use Area   |
| Unimproved Road   | Recreational Facilities   |
| Gravel or Crushed Rock  | Rest Areas  |
| Non-Rigid Pavement (Gravel or Asphalt)  | Ranger Station  |
| Rigid Pavement (Asphalt or Brick)   | Fish Hatchery   |
| Multiple Lane Undivided Highway   | Community Hall  |
| Divided Highway   | Correctional Institution  |
| Interstate Highway with Full Control of Access                                  | Tourist Court or Motel  |
| Side Roads and Streets  | Monument-Small  |
| Interstate-Numbered Highway   | Museum  |
| US-Numbered Highway   | Firestation   |
| State-Numbered Highway  | Courthouse  |
| State-Numbered Highway Spur   | Armory  |
| State-Numbered Highway Link   | Post Office   |
| Interstate Exit Number  | Highway Maintenance Yard  |
| Wide Stream   | Dump Area   |
| Narrow Stream   | Sewage Disposal Plant   |
| Irrigation Ditch  | Water Supply Stand Pipe   |
| Reservoir, Pond or Lake   | Pipe Line - Products  |
| Reservoir, With Dam   | Transmission Line   |
| Highway Bridge-Any Type (over 20' span)   | Power Plant   |
| Small Bridges-Closely Spaced, spacings indicate sites where bridges are grouped | Power Substation  |
| General Bridge-Steel, Concrete, Arch Bridge                                     | Radio or TV Station   |
| Truss Bridge  | Pumping Station   |
| State Boundary  | Weight Station or Part of Entry   |
| County Boundary   | Commercial or Municipal Airport   |
| Township Line   | Airport with Paved Runways  |
| Section Line  | Corporate Limit Lines   |
| Corporate Limit Lines   | Parks and Other Reservations  |
| Dam with Road on Top  | Boundary Limits of Area Shown in Enclosures (has enclosures for culture, State Capital) |
| Cattle Guard  | County Seat   |
| Dwelling  | Other Cities and Villages   |
| Row of Dwellings  | Incorporated City or Village  |
| Cemetery  | Triangulation Station   |
| Church or Other Religious Institution   | Points Between Which Distances Are Measured Indicated Thus                              |
| Church with Cemetery Adjacent   | Latitude and Longitude  |
| Hospital  | Nebraska Coordinate System (in thousands of feet)                                       |
| Business  | Aggregate Pit   |
| Industrial Plant  | Agricultural Experimental Station   |
| Filling Station   | Educational Institutions  |
| Grain Elevator  | Universal Transverse Mercator Grid (in thousands of feet)                               |



LAMBERT CONFORMAL CONIC PROJECTION  
1927 NORTH AMERICAN DATUM  
NEBRASKA COORDINATE SYSTEM-SOUTH ZONE



KEY TO COUNTIES

