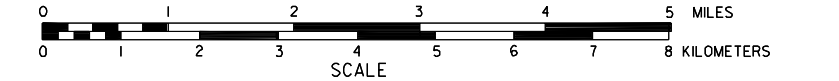


GENERAL HIGHWAY MAP
CHERRY COUNTY
 SOUTHEAST QUARTER
NEBRASKA

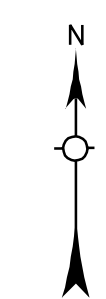
PREPARED BY THE
 DEPARTMENT OF ROADS
 TRANSPORTATION PLANNING DIVISION
 IN COOPERATION WITH THE
 U.S. DEPARTMENT OF TRANSPORTATION
 FEDERAL HIGHWAY ADMINISTRATION

1989

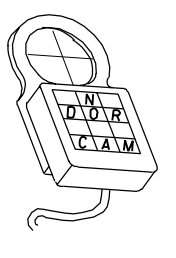
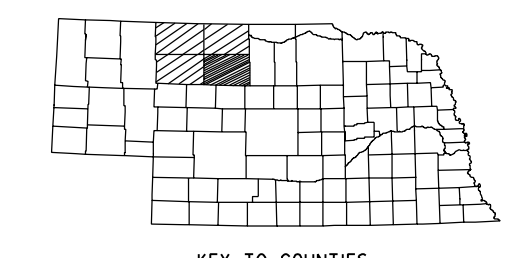


LEGEND

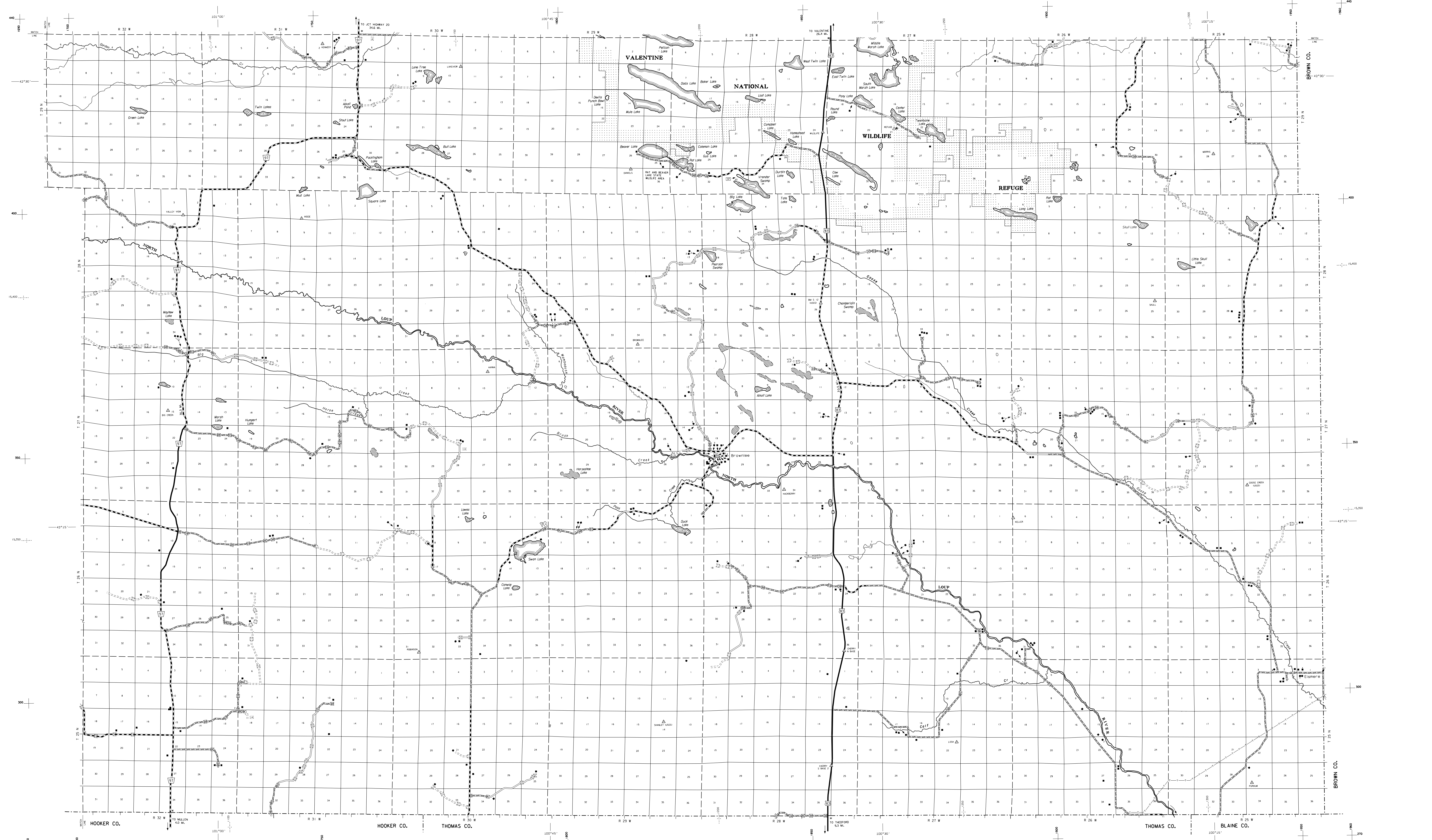
- | | |
|---|--|
| Primitive Road | Public Use Area |
| Unimproved Road | Recreation Area (Swimming Pool, etc.) |
| Gravel or Crushed Rock Road | Recreation Facility |
| Non Rigid Pavement (Dirt, or Asphalt) | Rest Area |
| Rigid Pavement (P.E.C., Seal, or Brick) | Ranger Station |
| Multiple Lane Undivided Highway | Fish Hatchery |
| Divided Highway | Community Hall |
| Interstate Highway with Full Control of Access | Correctional Institution |
| Side Roads and Streets | Tourist Court or Motel |
| Interstate-Numbered Highway | Monument-Small |
| US-Numbered Highway | Museum |
| State-Numbered Highway | Fire Station |
| State-Numbered Highway Spur | Courthouse |
| State-Numbered Highway Link | Armory |
| Interstate Exit Number | Post Office |
| Wide Stream | Highway Maintenance Yard |
| Narrow Stream | Dump Area |
| Irrigation Ditch | Sewage Disposal Plant |
| Reservoir, Pond or Lake | Water Supply Stand Pipe |
| Reservoir, With Dam | Pipe Line |
| Highway Bridge-Any Type, over 20' span | Transmission Line |
| Small Bridges-Closely Spaced, locations indicate limits within which bridges are graded | Power Plant |
| General Bridge (wood, steel, concrete) | Power Substation |
| Arch Bridge | Radio or TV Station |
| Truss Bridge | Pumping Station |
| Pedestrian Overpass | Weight Station or Port of Entry |
| Railroad Overpass | Commercial or Municipal Airport |
| Railroad Underpass | Airport with Paved Runways |
| Dam with Road on Top | State Boundary |
| Cattle Guard | Township Line |
| Dwelling | Section Line |
| Row of Dwellings | Corporate Limit Lines |
| Cemetery | Parks and Other Reservations |
| Church or Other Religious Institution | Boundary Limits of Area Shown in Enclosures (see enclosures for details) |
| Church with Cemetery Adjacent | State Capital |
| Hospital | County Seat |
| Business | Other Cities and Villages |
| Industrial Plant | Incorporated City or Village |
| Filling Station | Triangulation Station |
| Grain Elevator | Points Between Which Distances Are Measured Indicated Thus |
| Aggregate Pit | Latitude and Longitude |
| Agricultural Experimental Station | Nebraska Coordinate System in thousands of feet |
| Educational Institutions | Universal Transverse Mercator Grid in thousands of feet |



LAMBERT CONFORMAL CONIC PROJECTION
 1927 NORTH AMERICAN DATUM
 NEBRASKA COORDINATE SYSTEM-NORTH ZONE



KEY TO COUNTIES



T. RICHTERS
 CARTOGRAPHER

POPULATION AS OF 1990 CENSUS
 STATE HIGHWAYS CORRECTED TO 1992
 AERIAL PHOTOGRAPHY TAKEN IN 1966