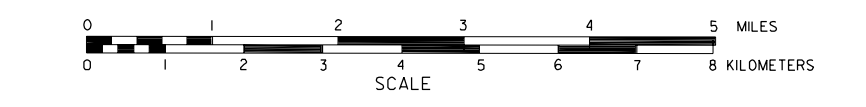


GENERAL HIGHWAY MAP CHERRY COUNTY NORTHEAST QUARTER NEBRASKA

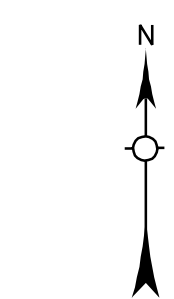
PREPARED BY THE
DEPARTMENT OF ROADS
TRANSPORTATION PLANNING DIVISION
IN COOPERATION WITH THE
U.S. DEPARTMENT OF TRANSPORTATION
FEDERAL HIGHWAY ADMINISTRATION

1989

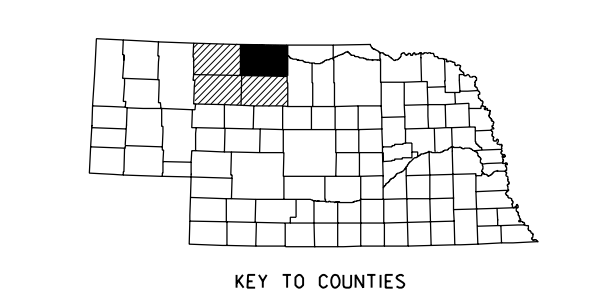


LEGEND

- | | |
|--|--|
| Primitive Road | Public Use Area |
| Unimproved Road | Recreational Facilities |
| Gravel or Crushed Road | Rest Areas |
| Non-Rigid Pavement (Dirt or Asphalt) | Ranger Station |
| Rigid Pavement (P.C.C., Asphalt or Bitum.) | Fish Hatchery |
| Multiple Lane Undivided Highway | Community Hall |
| Divided Highway | Correctional Institution |
| Interstate Highway with Full Control of Access | Tourist Court or Motel |
| Side Roads and Streets | Monument-Small |
| Interstate-Numbered Highway | Museum |
| US-Numbered Highway | Fire Station |
| State-Numbered Highway | Courthouse |
| State-Numbered Highway Spur | Post Office |
| State-Numbered Highway Link | Highway Maintenance Yard |
| Interstate Exit Number | Dump Area |
| Wide Stream | Sewage Disposal Plant |
| Narrow Stream | Water Supply Stand Pipe |
| Irrigation Ditch | Pipe Line |
| Reservoir, Pond or Lake | Transmission Line |
| Reservoir, With Dam | Power Plant |
| Highway Bridge-Any Type, over 20' span | Radio or TV Station |
| Small Bridges-Closely spaced, footpaths indicate better, where bridges are grouped | Pumping Station |
| General Bridge-where closely spaced | Weight Station or Port of Entry |
| Arch Bridge | Commercial or Municipal Airport |
| Truss Bridge | Airport with Paved Runways |
| Pedestrian Underpass | State Boundary |
| Pedestrian Overpass | County Boundary |
| Railroad Overpass | Township Line |
| Railroad Underpass | Section Line |
| Railroad | Corporate Limit Lines |
| Dam with Road on Top | Parks and Other Reservations |
| Cattle Guard | Boundary Limits of Area Shown in Other Editions (see annotations for natural, State Capital) |
| Dwelling | County Seat |
| Row of Dwellings | Other Cities and Villages |
| Cemetery | Incorporated City or Village |
| Church or Other Religious Institution | Triangulation Station |
| Church with Cemetery Adjacent | Points Between Which Distances Are Measured Indicated Thus |
| Hospital | Latitude and Longitude |
| Business | Nebraska Coordinate System (in thousands of feet) |
| Industrial Plant | Universal Transverse Mercator Grid (in meters of feet) |
| Filling Station | |
| Grain Elevator | |
| Aggregate Pit | |
| Agricultural Experiment Station | |
| Educational Institutions | |



LAMBERT CONFORMAL CONIC PROJECTION
1927 NORTH AMERICAN DATUM
NEBRASKA COORDINATE SYSTEM-NORTH ZONE



KEY TO COUNTIES