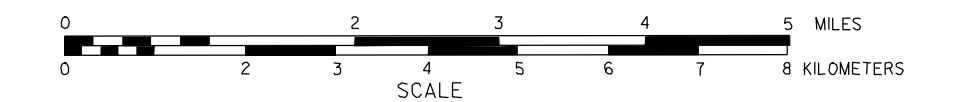


GENERAL HIGHWAY MAP CASS COUNTY NEBRASKA

PREPARED BY THE
DEPARTMENT OF ROADS
INFORMATION SYSTEMS DIVISION
IN COOPERATION WITH THE
U.S. DEPARTMENT OF TRANSPORTATION
FEDERAL HIGHWAY ADMINISTRATION

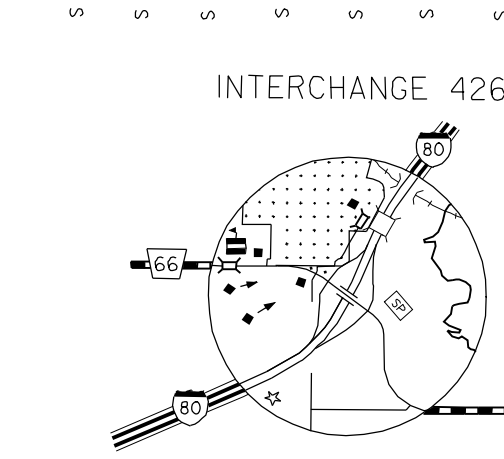
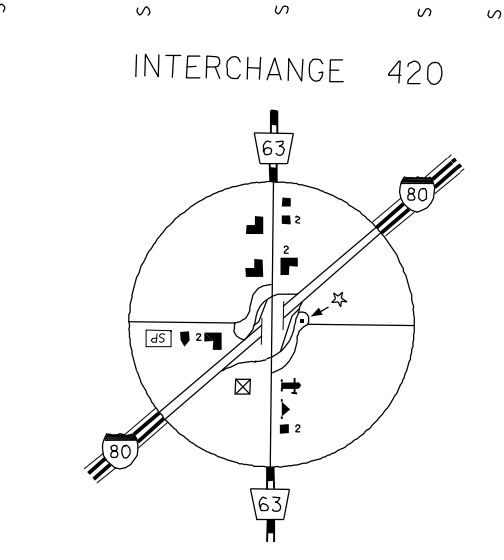
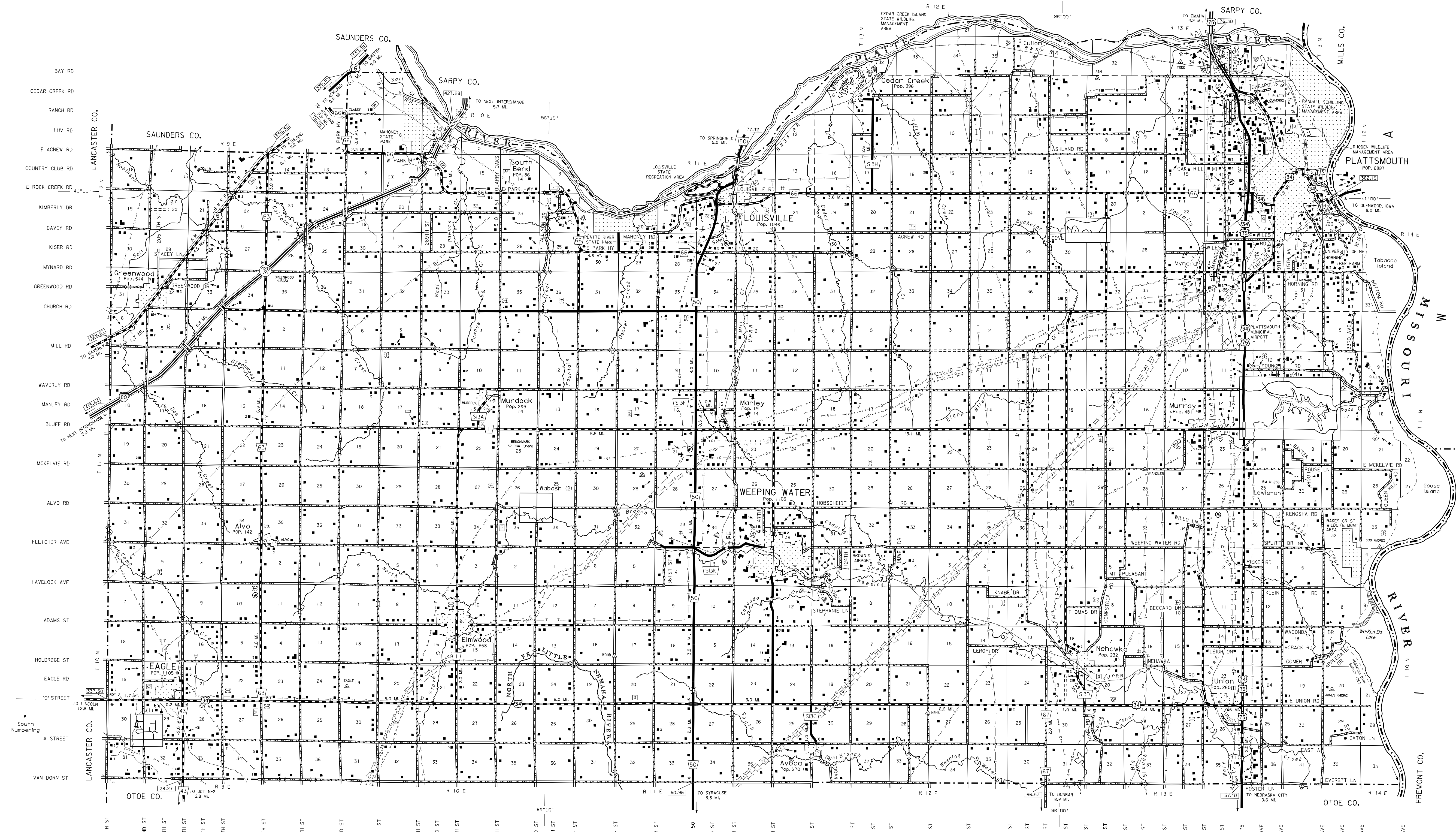
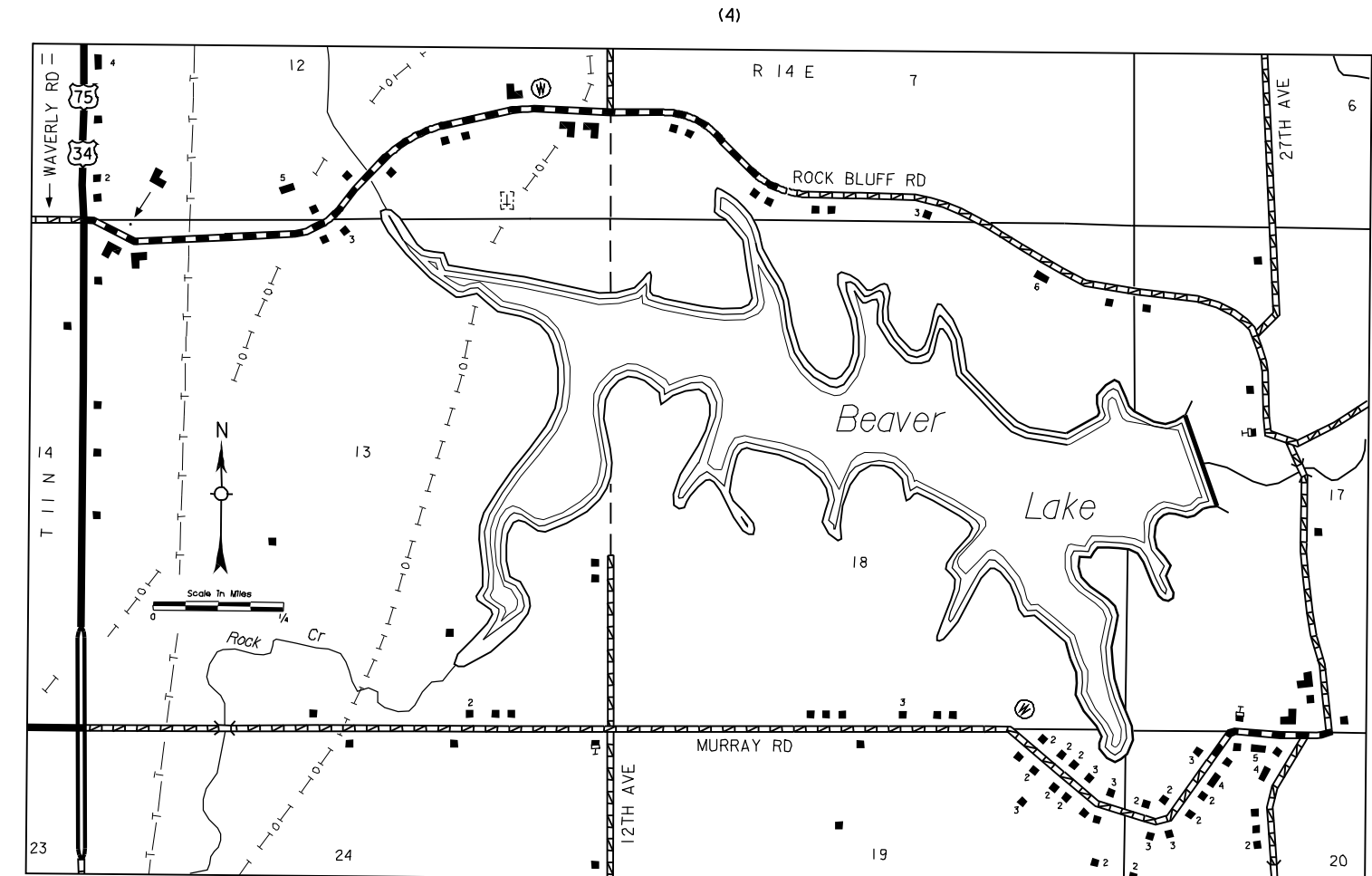
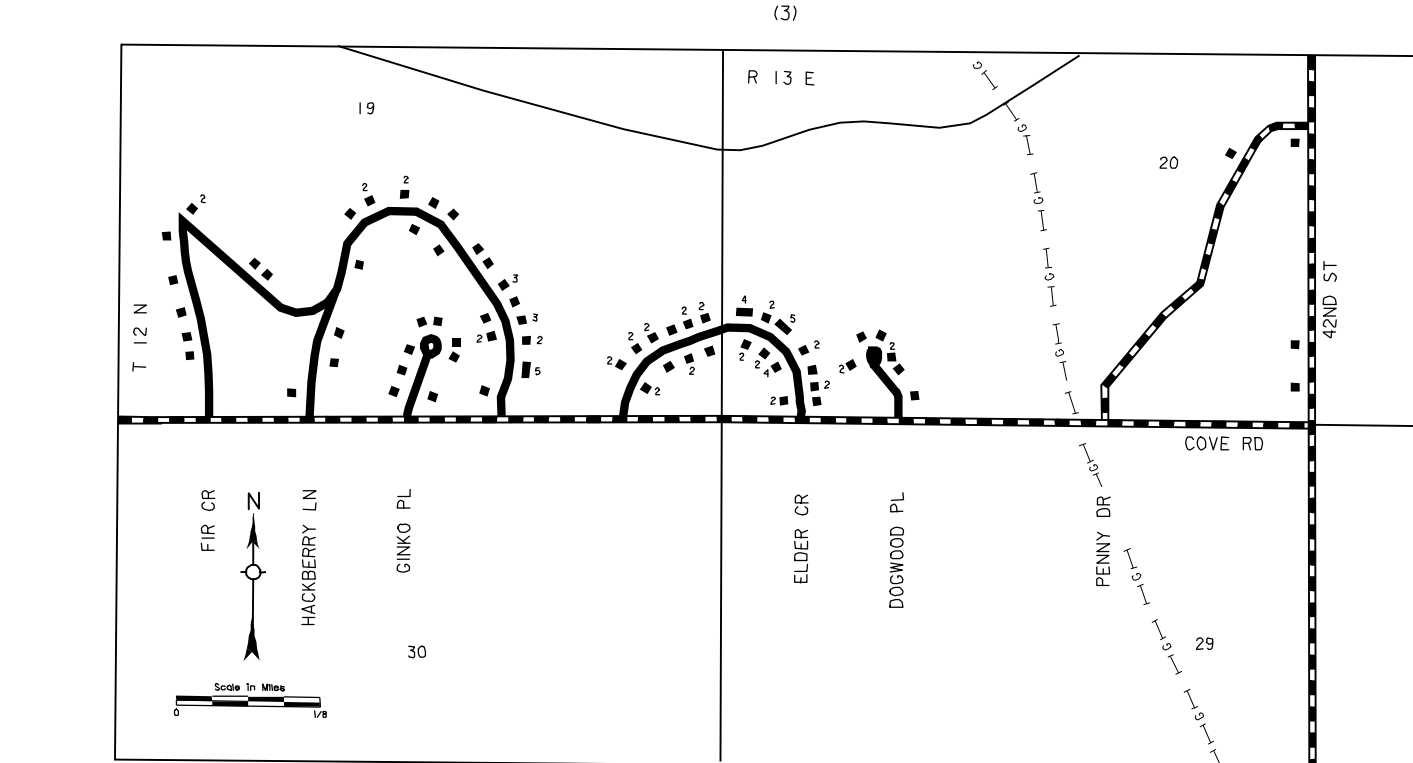
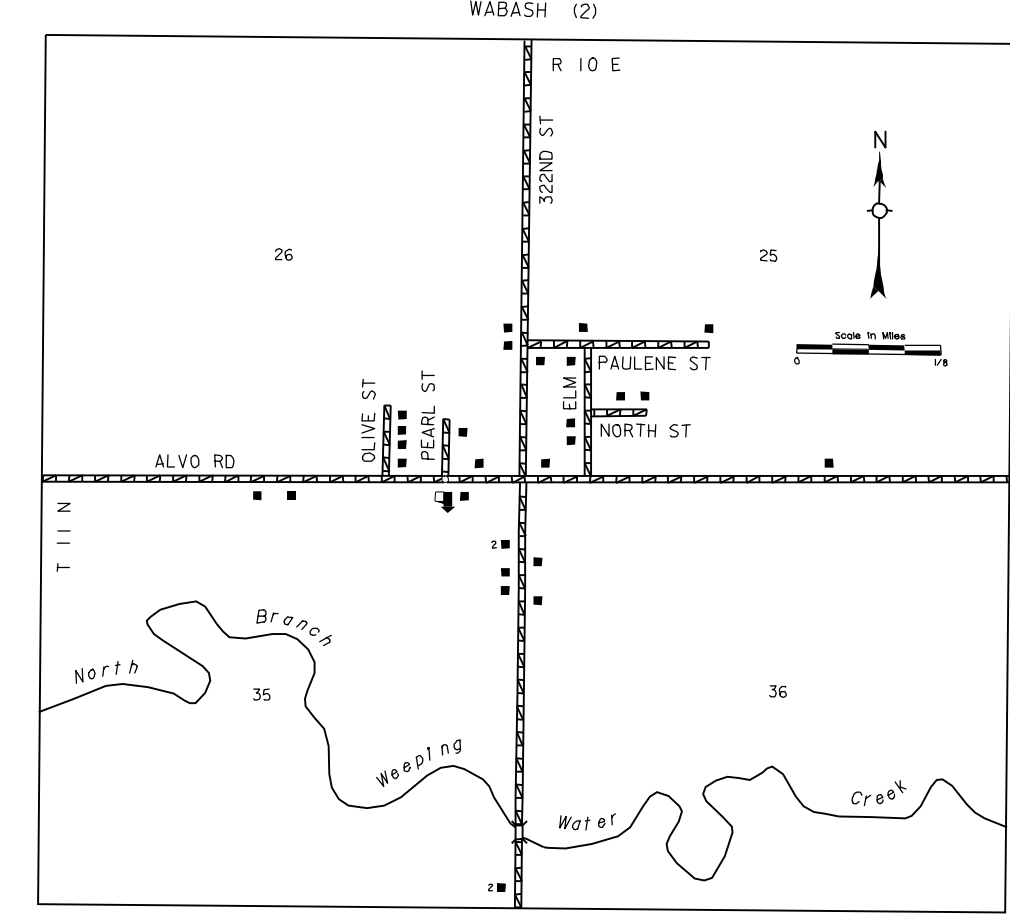
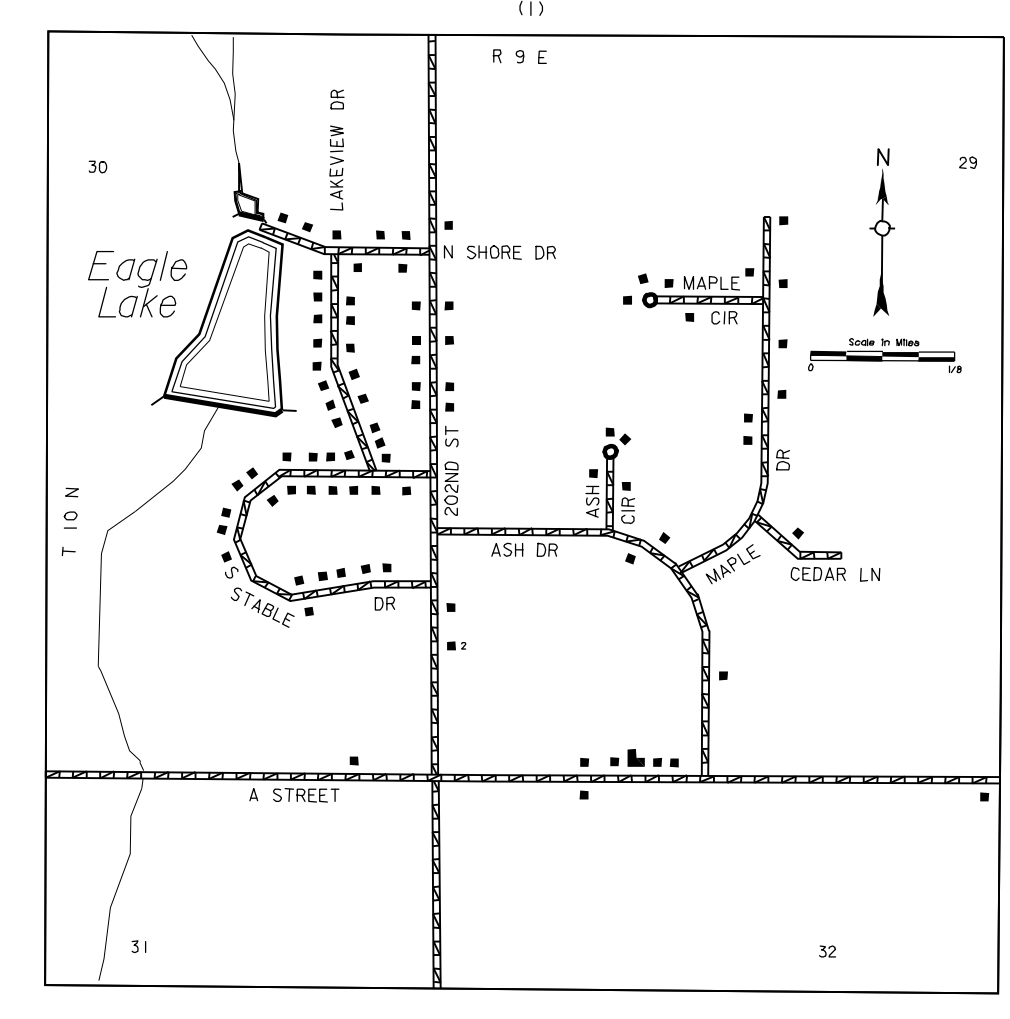


INVENTORY DATE:
1999

NAME	REVISION HISTORY	DATE	REVISION
G. WILLIAMS	ADAMS ROAD	JUNE 2000	911 SYSTEM
G. WILLIAMS	ADAMS ROAD	JUNE 2000	911 SYSTEM
G. WILLIAMS	ADAMS ROAD	APRIL 2001	361st ST VACATED
R. BRAIN	ADAMS ROAD	APRIL 2004	361st ST VACATED

LEGEND

- Primitive Road
- Underpass Road
- Gravel or Crushed Rock
- Asphalt/Bituminous Surface
- Concrete/Brick Surface
- Multiple Lane Undivided Highway
- Divided Highway
- Interstate Highway with Full Control of Access
- State Roads and Streets
- 911 NAMED/Numbered Roads
- Interstate-Numbered Highway
- US-Numbered Highway
- State-Numbered Highway
- State-Numbered Highway Spur
- State-Numbered Highway Link
- Highway Reference Post Number
- Interstate Exit Number
- Wide Stream
- Narrow Stream
- Irrigation Ditch
- Reservoir, Pond or Lake
- Reservoir, With Dam
- Highway Bridge-Any Type
- Small Bridges-Closely Spaced
- General Bridge
- Arch Bridge
- Truss Bridge
- Pedestrian Underpass
- Railroad Overpass
- Railroad Underpass
- Dam with Road on Top
- Cattle Guard
- Dwelling
- Row of Dwellings
- Cemetery
- Church or Other Religious Institution
- Church with Cemetery Adjacent
- Hospital
- Business
- Industrial Plant
- Filling Station
- Crane Elevator
- Aggregate Pit
- Agricultural Experimental Station
- Educational Institution
- Public Use Area
- Recreational Facility
- Rest Area
- Flower Station
- Community Hall
- Correctional Institution
- Tourist Court or Motel
- Monument-Small
- Museum
- Firestation
- Courthouse
- Post Office
- Highway Maintenance Yard
- Dump Area
- Sewage Disposal Plant
- Water Supply Stand Pipe
- Pipe Line
- Transmission Line
- Power Plant
- Power Substation
- Radiotv Station
- Pumping Station
- Weight Station or Port of Entry
- Commercial or Municipal Airport
- Airport with Paved Runways
- State Boundary
- County Boundary
- Section Line
- Corporate Limit Lines
- Parks and Other Reservations
- Boundary Limits of Area Shown in Enlargements
- State Capitol
- County Seat
- Other Cities and Villages
- Incorporated City or Village
- Triangulation Station
- Points Between Which Distances Are Measured Indicated Thus
- Latitude and Longitude



LAMBERT CONFORMAL CONIC PROJECTION
1983 NORTH AMERICAN DATUM
NEBRASKA COORDINATE SYSTEM

