

GENERAL HIGHWAY MAP
BUTLER COUNTY
 NEBRASKA

PREPARED BY THE
 DEPARTMENT OF ROADS
 TRANSPORTATION PLANNING DIVISION

IN COOPERATION WITH THE
 U.S. DEPARTMENT OF TRANSPORTATION
 FEDERAL HIGHWAY ADMINISTRATION

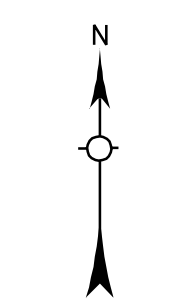
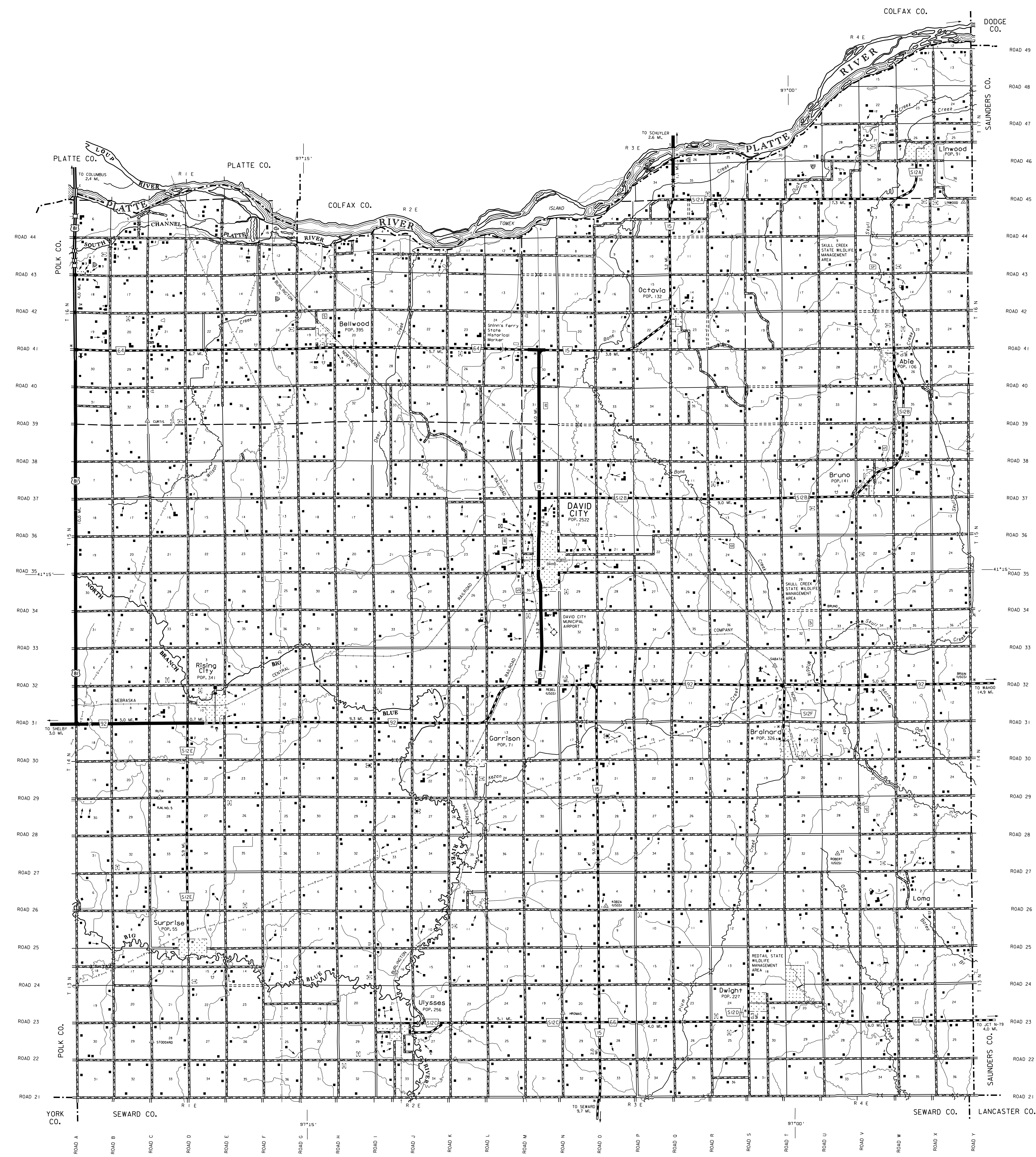
1995



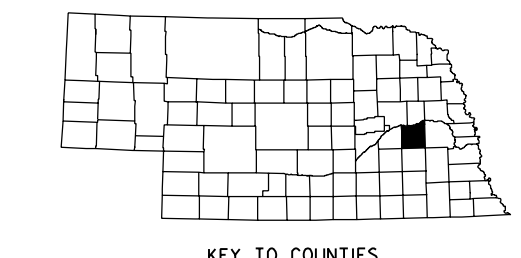
REVISION HISTORY		
NAME	DATE	REVISION
L. GRIFFITH	NOV. 2000	911 SYSTEM

LEGEND

- Primitive Road
- Unimproved Road
- Gravel or Crushed Rock
- Asphalt/Bituminous Surface
- Concrete/Brick Surface
- Multiple Lane Undivided Highway
- Divided Highway
- Interstate Highway with Full Control of Access
- Side Roads and Streets
- Interstate-Numbered Highway
- US-Numbered Highway
- State-Numbered Highway
- State-Numbered Highway Spur
- State-Numbered Highway Link
- Interstate Exit Number
- Wide Stream
- Narrow Stream
- Irrigation Ditch
- Reservoir, Pond or Lake
- Reservoir, With Dam
- Highway Bridge-Any Type, over 200' span
- Small Bridges-Closely Spaced, numbers indicate spans within bridges are grouped
- General Bridge (wood, steel, concrete)
- Arch Bridge
- Truss Bridge
- Pedestrian Overpass
- Railroad Overpass
- Railroad Underpass
- Railroad
- Dam with Road on Top
- Cattle Guard
- Dwelling
- Row of Dwellings
- Cemetery
- Church or Other Religious Institution
- Church with Cemetery Adjacent
- Hospital
- Business
- Industrial Plant
- Filling Station
- Grain Elevator
- Aggregate PIT
- Agricultural Experimental Station
- Educational Institutions
- Public Use Area
- Recreational Facilities
- Rest Area
- Ranger Station
- Sign Highway
- Community Hall
- Correctional Institution
- Tourist Court or Motel
- Monument-Small
- Museum
- Firestation
- Courthouse
- Armory
- Post Office
- Highway Maintenance Yard
- Dump Area
- Sewage Disposal Plant
- Water Supply Stand Pipe
- Pipe Line
- Transmission Line
- Power Plant
- Power Substation
- Radio or TV Station
- Pumping Station
- Right Station or Part of Entry, Commercial or Municipal Airport
- Commercial or Municipal Airport
- Airport with Paved Runways
- State Boundary
- County Boundary
- Township Line
- Section Line
- Corporate Limit Lines
- Parks and Other Reservations
- Boundary Limits of Area Shown in Enlargements (see enlargements for culture)
- State Capital
- County Seat
- Other Cities and Villages
- Incorporated City or Village
- Triangulation Station
- Points Between Which Distances Are Measured Indicated Thus
- Latitude and Longitude
- Nebraska Coordinate System (in thousands of feet)
- Universal Transverse Mercator Grid (in thousands of feet)



LAMBERT CONFORMAL CONIC PROJECTION
 1927 NORTH AMERICAN DATUM
 NEBRASKA COORDINATE SYSTEM-SOUTH ZONE



KEY TO COUNTIES