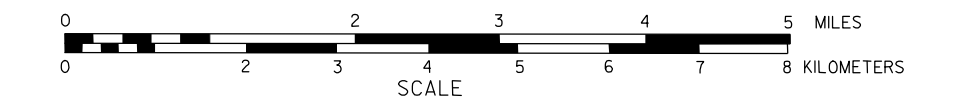


GENERAL HIGHWAY MAP ADAMS COUNTY NEBRASKA

PREPARED BY THE
DEPARTMENT OF ROADS
INFORMATION SYSTEMS DIVISION

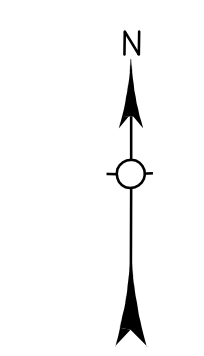
IN COOPERATION WITH THE
U.S. DEPARTMENT OF TRANSPORTATION
FEDERAL HIGHWAY ADMINISTRATION
2000



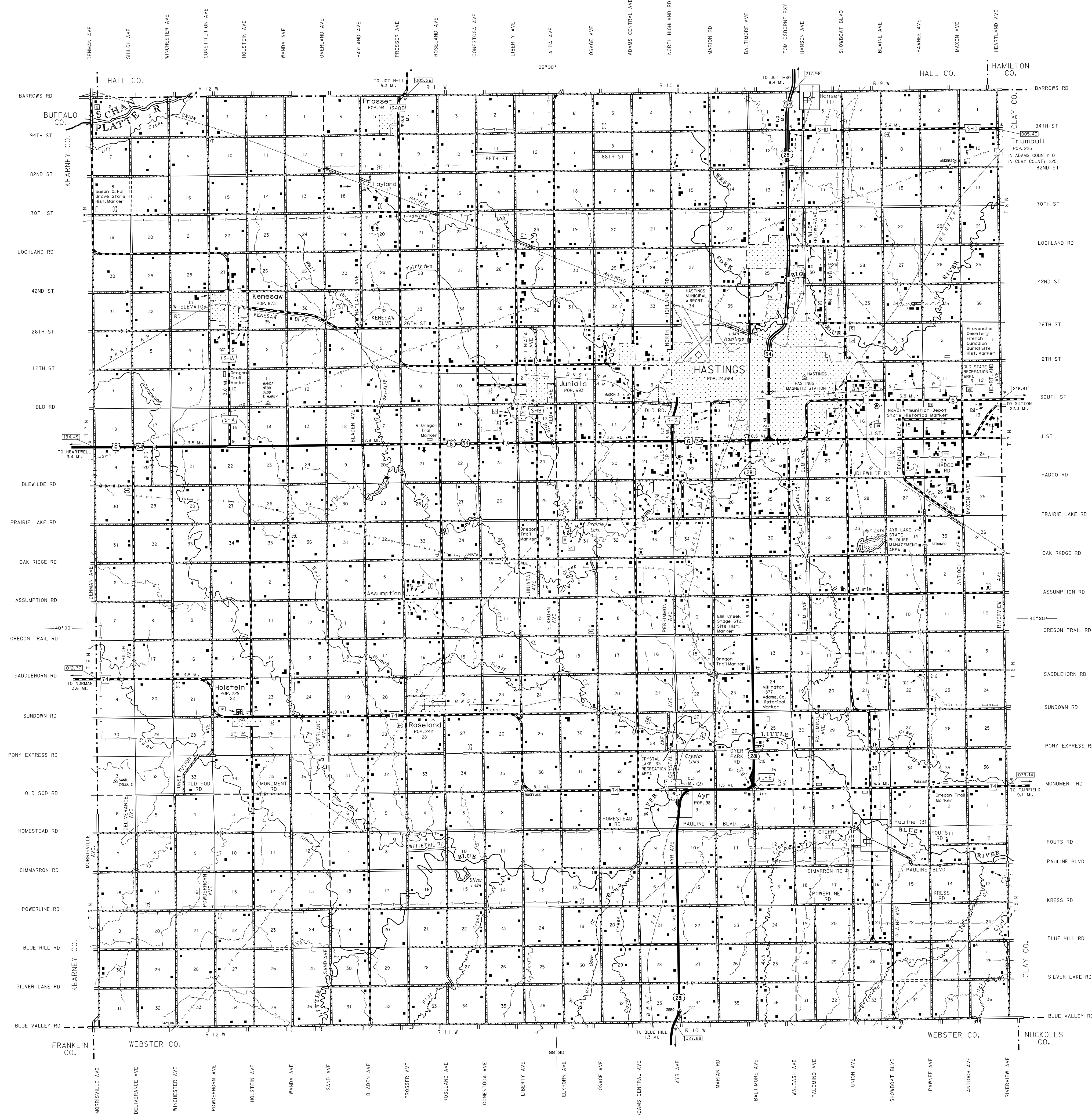
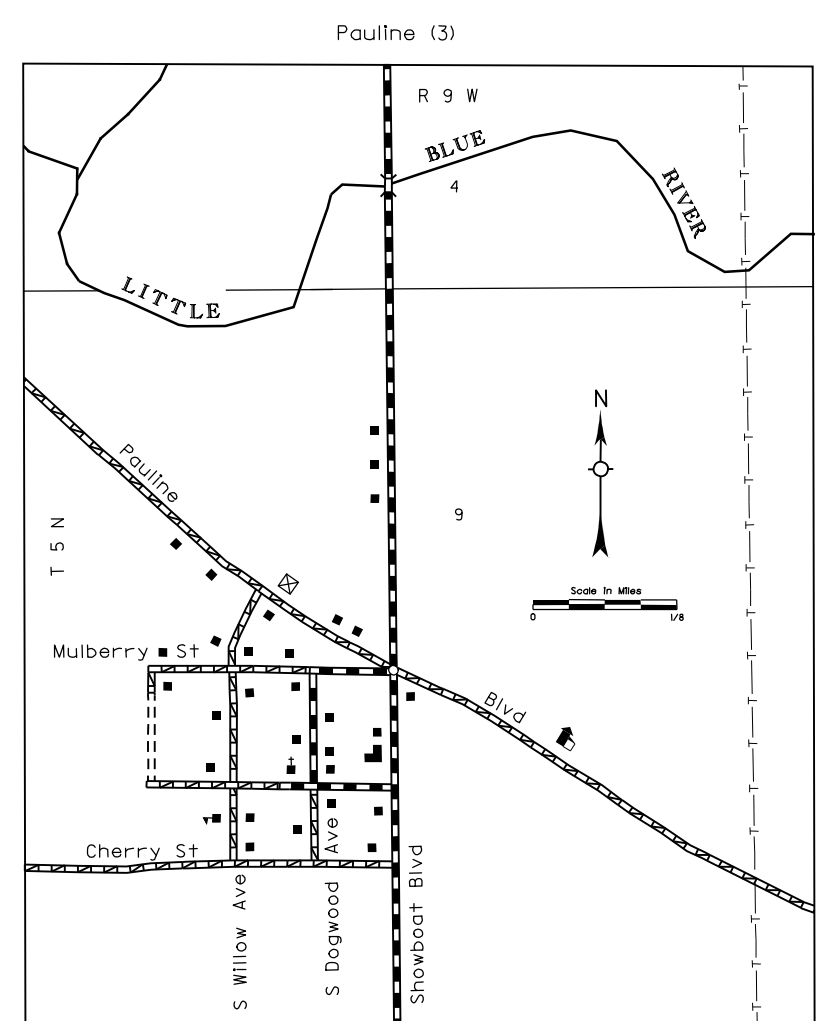
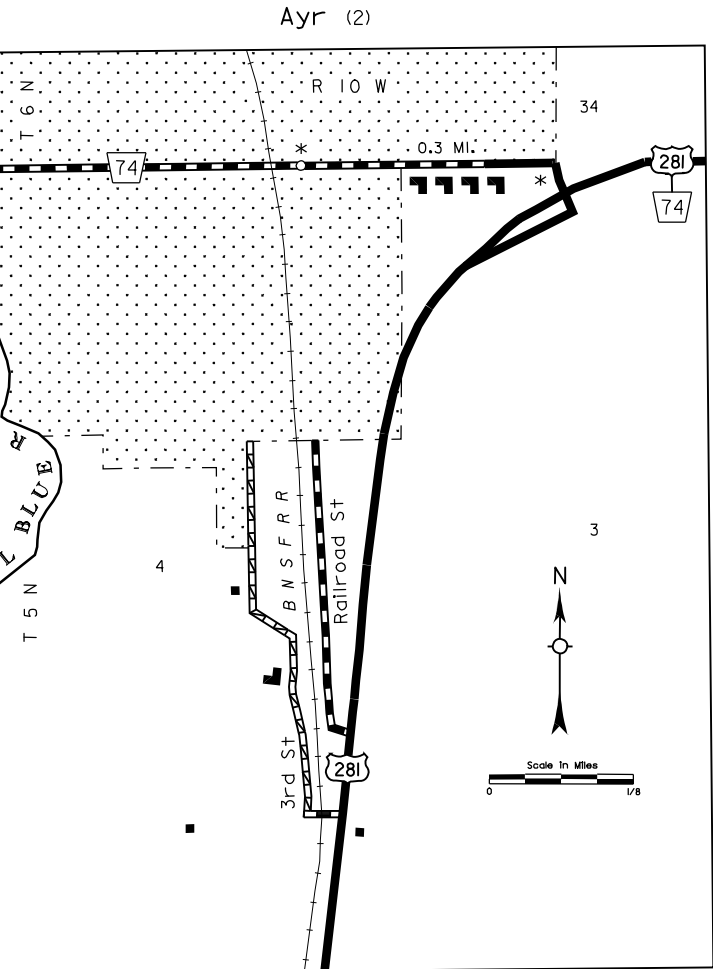
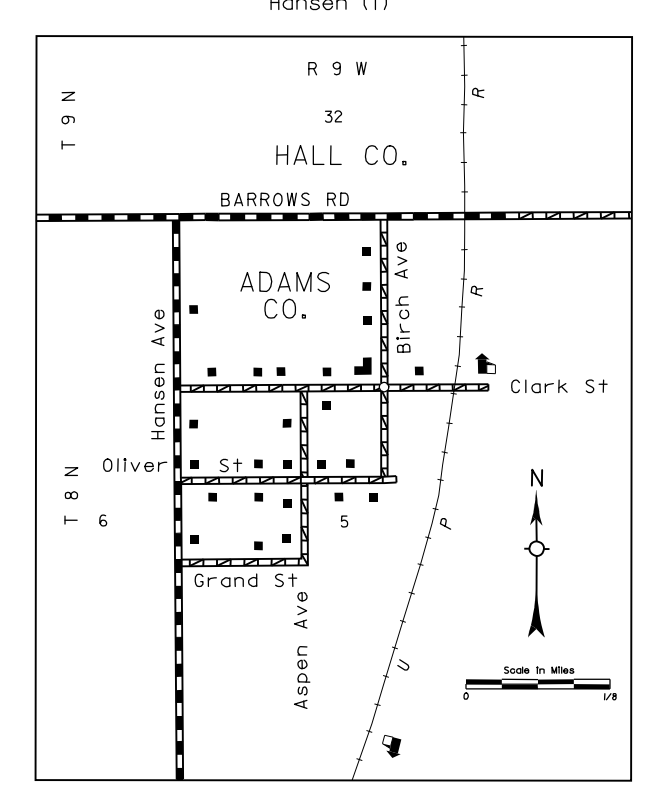
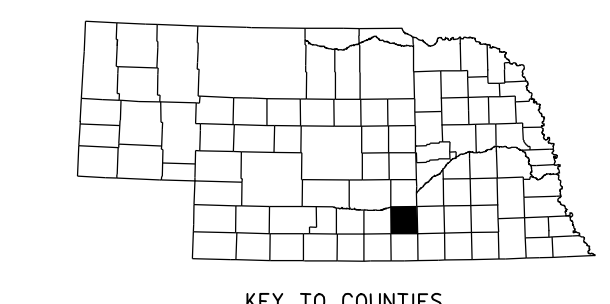
REVISION HISTORY		
NAME	DATE	REVISION
LAGOLD SMITH	OCT. 2000	811 SYSTEM
CUESMENA	JUNE 2003	COUNTY

LEGEND

- | | |
|--|--|
| Primitive Road..... | Aggregate Pfl..... |
| Unimproved Road..... | Agricultural Experimental Station..... |
| Gravel or Crushed Rock..... | Educational Institutions..... |
| Asphalt/Bituminous Surface..... | Public Use Area..... |
| Multiple Lane Undivided Highway..... | Low, 4th, 5th, 6th, 7th, 8th, 9th, 10th, 11th, 12th, 13th, 14th, 15th, 16th, 17th, 18th, 19th, 20th, 21st, 22nd, 23rd, 24th, 25th, 26th, 27th, 28th, 29th, 30th, 31st, 32nd, 33rd, 34th, 35th, 36th, 37th, 38th, 39th, 40th, 41st, 42nd, 43rd, 44th, 45th, 46th, 47th, 48th, 49th, 50th, 51st, 52nd, 53rd, 54th, 55th, 56th, 57th, 58th, 59th, 60th, 61st, 62nd, 63rd, 64th, 65th, 66th, 67th, 68th, 69th, 70th, 71st, 72nd, 73rd, 74th, 75th, 76th, 77th, 78th, 79th, 80th, 81st, 82nd, 83rd, 84th, 85th, 86th, 87th, 88th, 89th, 90th, 91st, 92nd, 93rd, 94th, 95th, 96th, 97th, 98th, 99th, 100th |
| Asphalt/Bituminous Surface..... | Recreational Facilities..... |
| Concrete/Brick Surface..... | Rest Area..... |
| Multiple Lane Undivided Highway..... | Ranger Station..... |
| Concrete/Brick Surface..... | Fish Hatchery..... |
| Divided Highway..... | Community Hall..... |
| Interstate Highway with Full Control of Access..... | Correctional Institution..... |
| State Roads and Streets..... | Tourist Court or Motel..... |
| 911 Numbered Roads..... | Monument-Small..... |
| Interstate-Numbered Highway..... | Museum..... |
| US-Numbered Highway..... | Firestation..... |
| State-Numbered Highway..... | Courthouse..... |
| State-Numbered Highway Spur..... | Armory..... |
| State-Numbered Highway Link..... | Post Office..... |
| Highway Reference Post Number..... | Highway Maintenance Yard..... |
| Interstate Exit Number..... | Dump Area..... |
| Wide Stream..... | Sewage Disposal Plant..... |
| Narrow Stream..... | Water Supply Stand Pipe..... |
| Irrigation Ditch..... | Pipe Line..... |
| Reservoir, Pond or Lake..... | Transmission Line..... |
| Reservoir, With Dam..... | Power Plant..... |
| Highway Bridge-Any Type (over 20' span)..... | Power Substation..... |
| Small Bridges-Closely Spaced (measurements indicate limits within which bridges are placed)..... | Radio or TV Station..... |
| General Bridge (wood, steel, concrete)..... | Pumping Station..... |
| Arch Bridge..... | Weight Station or Part of Entry..... |
| Truss Bridge..... | Commercial or Municipal Airport..... |
| Footbridge..... | Airport with Paved Runways..... |
| Pedestrian Overpass..... | State Boundary..... |
| Railroad Overpass..... | County Boundary..... |
| Railroad Underpass..... | Township Line..... |
| Railroad..... | Section Line..... |
| Dam with Road on Top..... | Corporate Limit Lines..... |
| Coffee Guard..... | Parks and Other Reservations..... |
| Dwelling..... | Boundary Limits of Area Shown in Enclosures (see enclosures for details)..... |
| Row of Dwellings..... | State Capital..... |
| Cemetery..... | County Seat..... |
| Church or Other Religious Institution..... | Other Cities and Villages..... |
| Church with Cemetery adjacent..... | Incorporated City or Village..... |
| Hospital..... | Triangulation Station..... |
| Business..... | Points Between Which Distances Are Measured Indicated Thus..... |
| Filling Station..... | Grain Elevator..... |
| Grain Elevator..... | Latitude and Longitude..... |



LAMBERT CONFORMAL CONIC PROJECTION
1983 NORTH AMERICAN DATUM
NEBRASKA COORDINATE SYSTEM



POPULATION AS OF 2000 CENSUS
STATE HIGHWAYS CORRECTED TO 2004