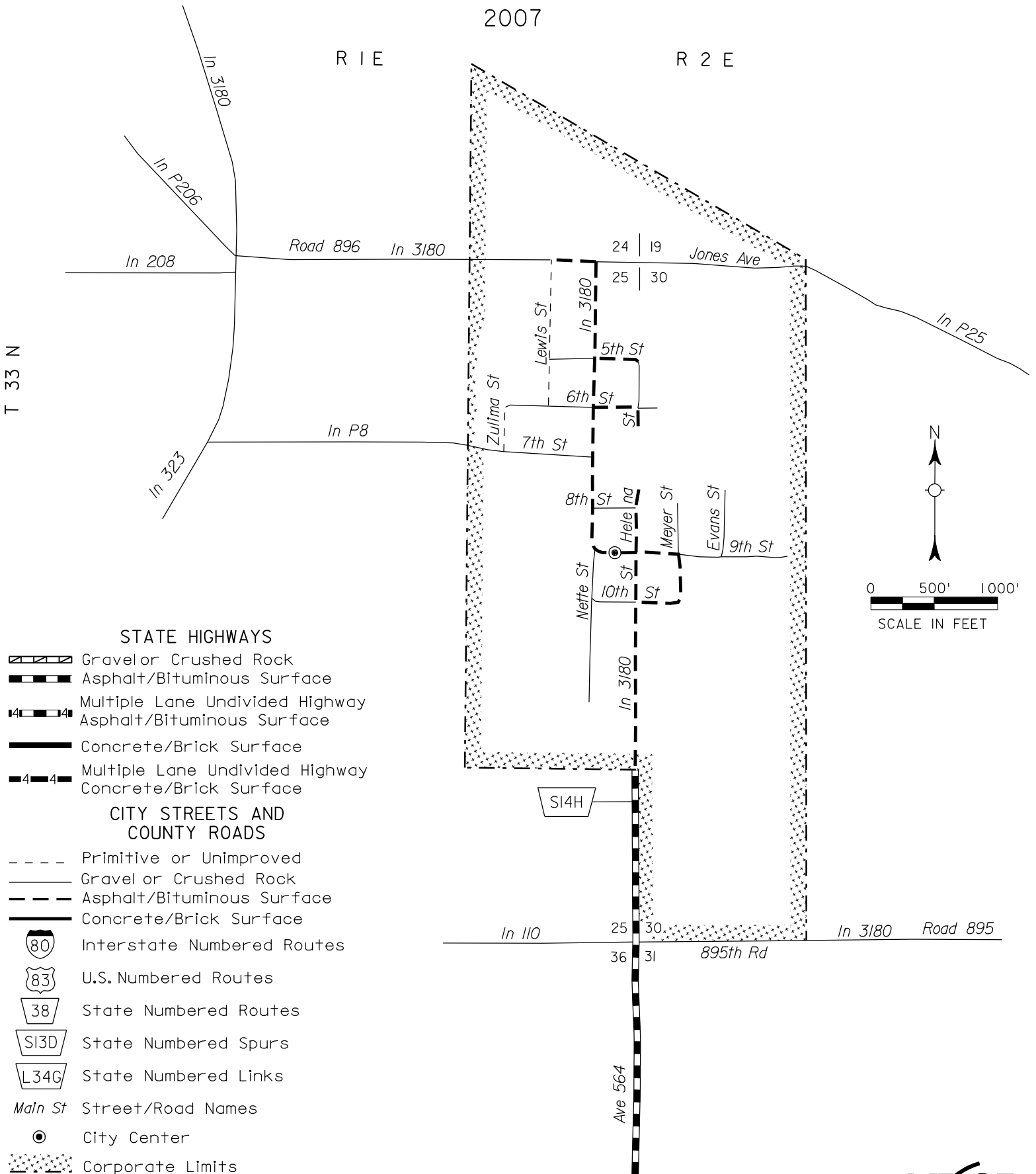


# SAINT HELENA

CEDAR COUNTY  
NEBRASKA

POPULATION 86 (2000 CENSUS)  
2007



### STATE HIGHWAYS

- Gravel or Crushed Rock
- Asphalt/Bituminous Surface
- Multiple Lane Undivided Highway Asphalt/Bituminous Surface
- Concrete/Brick Surface
- Multiple Lane Undivided Highway Concrete/Brick Surface

### CITY STREETS AND COUNTY ROADS

- Primitive or Unimproved
- Gravel or Crushed Rock
- Asphalt/Bituminous Surface
- Concrete/Brick Surface
- Interstate Numbered Routes
- U.S. Numbered Routes
- State Numbered Routes
- State Numbered Spurs
- State Numbered Links
- Main St* Street/Road Names
- City Center
- Corporate Limits

CORPORATE LIMITS AS OF 2007  
STATE HIGHWAYS CORRECTED TO 2007

NDOR makes no warranties, guarantees, or representations for accuracy of this information and assumes no liability for errors or omissions. Please notify the Department of any errors or omissions identified in this data.

