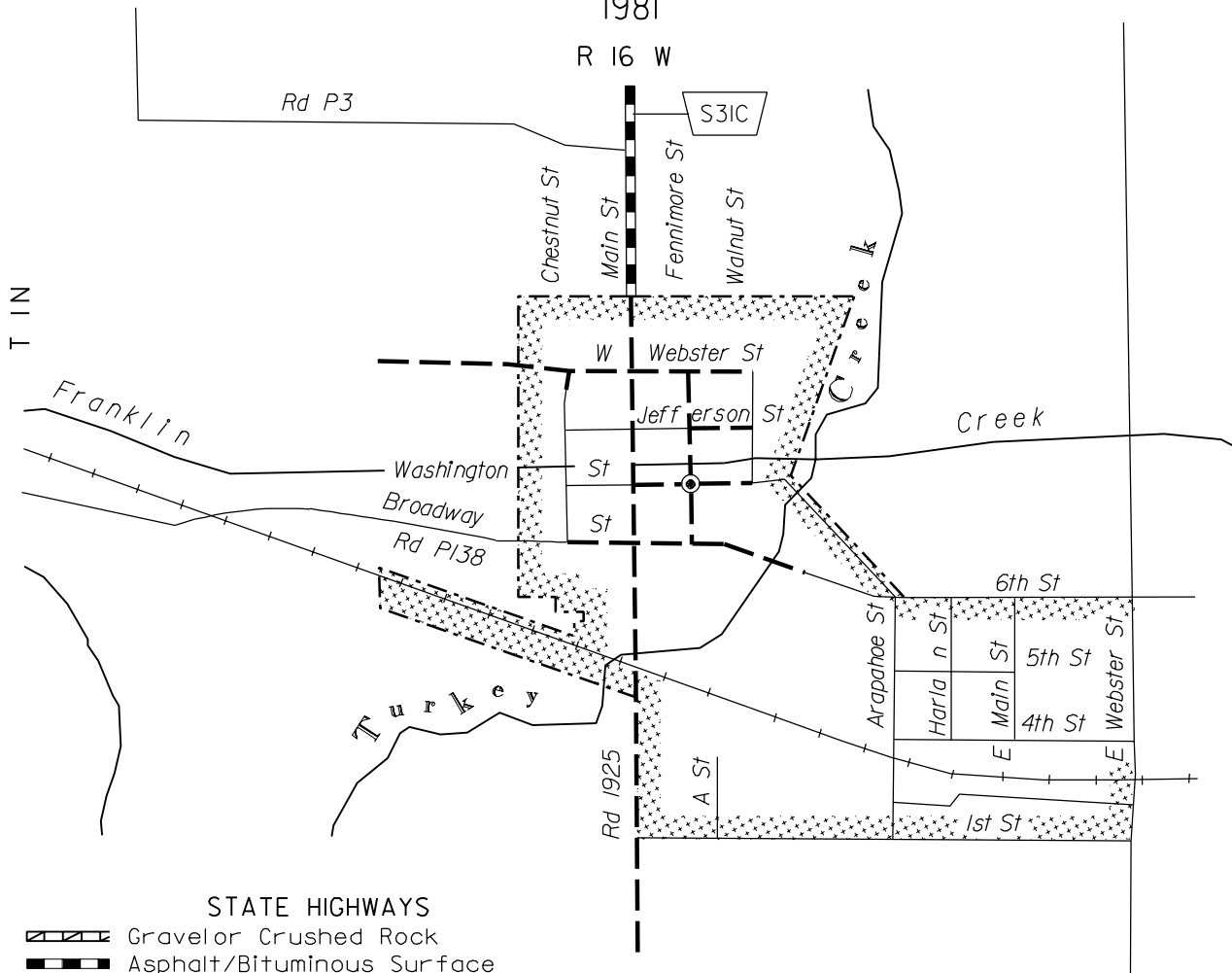


# NAPONEE

FRANKLIN COUNTY  
NEBRASKA

POPULATION 132 (2000 CENSUS)

1981



## STATE HIGHWAYS

- Gravel or Crushed Rock
- Asphalt/Bituminous Surface
- Concrete/Brick Surface

## CITY STREETS AND COUNTY ROADS

- Primitive or Unimproved
- Gravel or Crushed Rock
- Non-Rigid Pavement (BM or ACSC)
- Rigid Pavement (PCC, ACSC or Brick)

Interstate Numbered Routes

U.S. Numbered Routes

State Numbered Routes

State Numbered Spurs

State Numbered Links

*In 116* Inventoried Numbered Routes

*Ma 1480* Major Collector Routes

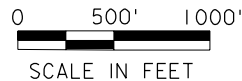
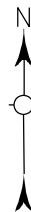
*Mi 7100* Minor Collector Routes

*Ur 5092* Urban Routes

*RD 767* 911 NAMED/Numbered Routes

City Center

Corporate Limits



CORPORATE LIMITS AS OF 1981  
STATE HIGHWAYS CORRECTED TO 1982

