

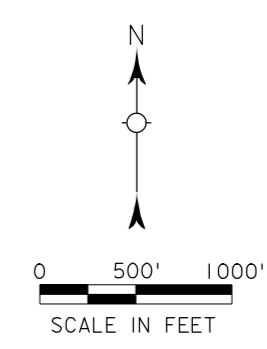
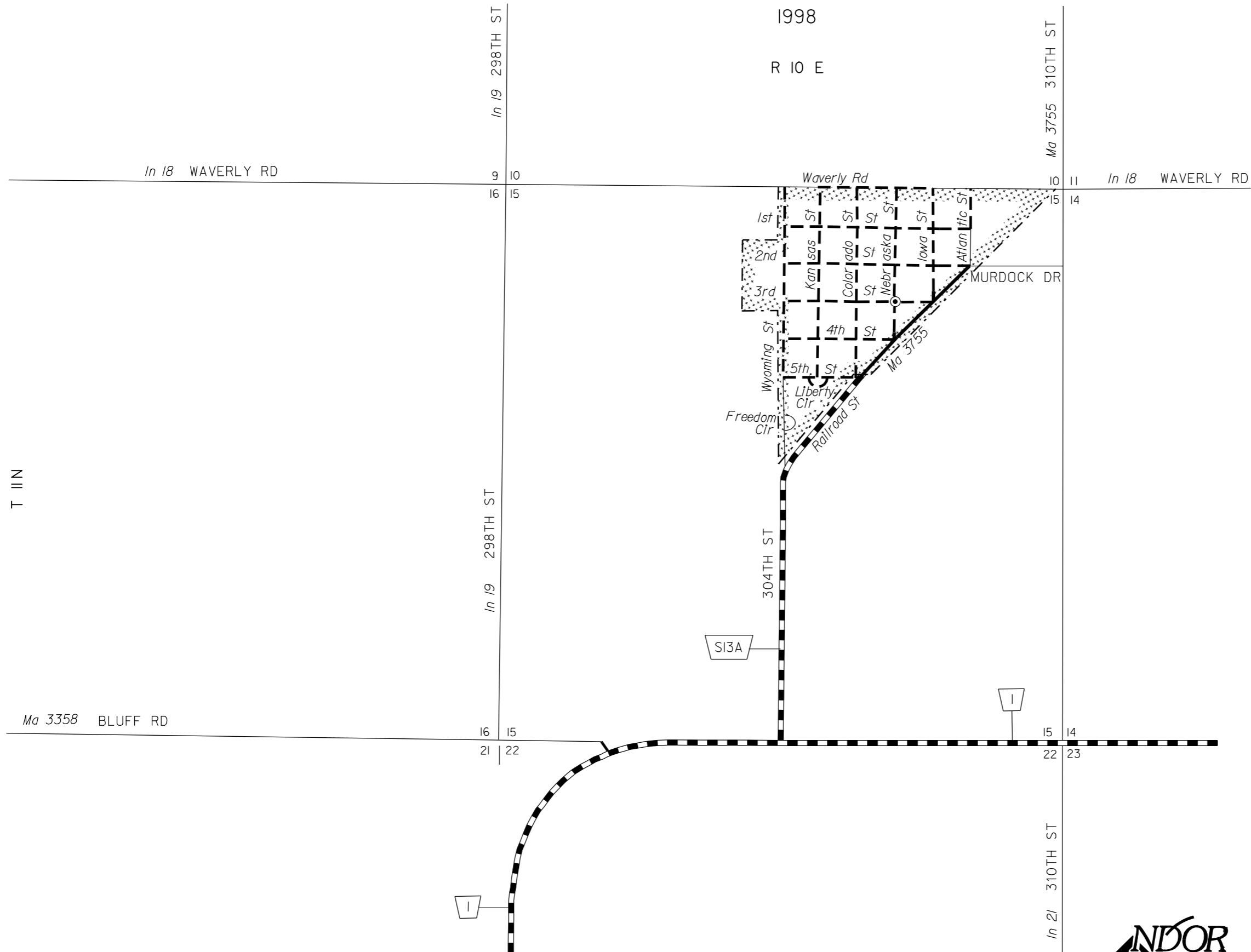
# MURDOCK

CASS COUNTY  
NEBRASKA

POPULATION 269 (2000 CENSUS)

1998

R 10 E



- STATE HIGHWAYS**
- Gravel or Crushed Rock
  - Asphalt/Bituminous Surface
  - Multiple Lane Undivided Highway Asphalt/Bituminous Surface
  - Concrete/Brick Surface
  - Multiple Lane Undivided Highway Concrete/Brick Surface
- CITY STREETS AND COUNTY ROADS**
- Primitive or Unimproved
  - Gravel or Crushed Rock
  - Asphalt/Bituminous Surface
  - Concrete/Brick Surface
  - Interstate Numbered Routes
  - U.S. Numbered Routes
  - State Numbered Routes
  - State Numbered Spurs
  - State Numbered Links
  - AA St* Unnamed Routes
  - In 116* Inventoried Numbered Routes
  - RD 767* 911 NAMED/Numbered Routes
  - City Center
  - Corporate Limits



CORPORATE LIMITS AS OF 2004  
STATE HIGHWAYS CORRECTED TO 2004

T 11 N