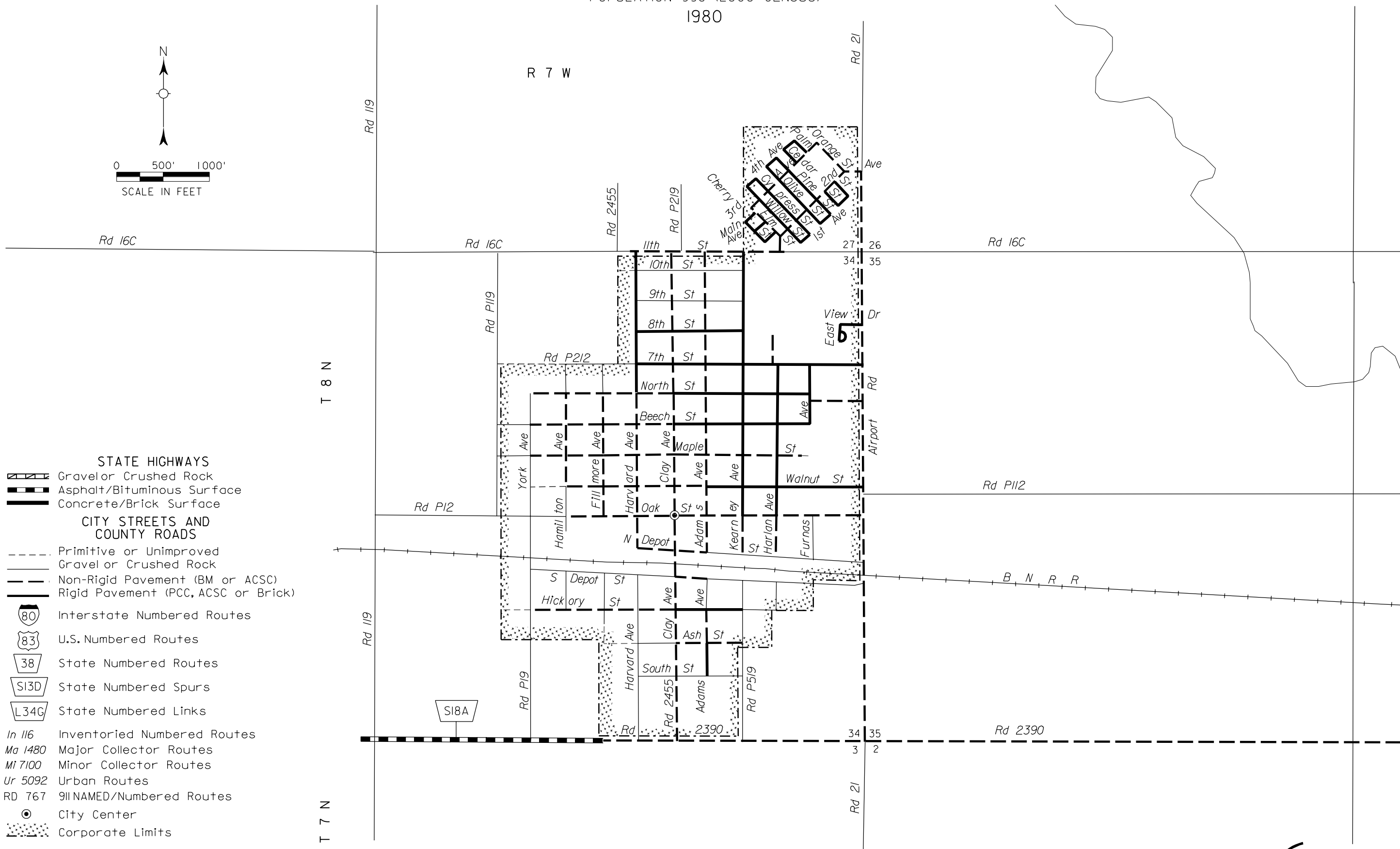
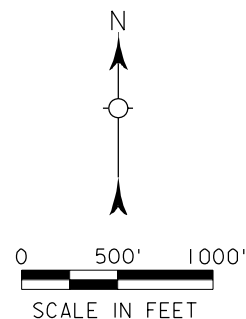


HARVARD

CLAY COUNTY
NEBRASKA

POPULATION 998 (2000 CENSUS)
1980



- STATE HIGHWAYS**
- Gravel or Crushed Rock
 - Asphalt/Bituminous Surface
 - Concrete/Brick Surface
- CITY STREETS AND COUNTY ROADS**
- Primitive or Unimproved
 - Gravel or Crushed Rock
 - Non-Rigid Pavement (BM or ACSC)
 - Rigid Pavement (PCC, ACSC or Brick)
- ROUTE MARKERS**
- Interstate Numbered Routes
 - U.S. Numbered Routes
 - State Numbered Routes
 - State Numbered Spurs
 - State Numbered Links
- INVENTORY ROUTES**
- In 116* Inventoried Numbered Routes
 - Ma 1480* Major Collector Routes
 - Mi 7100* Minor Collector Routes
 - Ur 5092* Urban Routes
 - RD 767* 911 NAMED/Numbered Routes
- OTHER**
- City Center
 - Corporate Limits

CORPORATE LIMITS AS OF 1997
STATE HIGHWAYS CORRECTED TO 1997

