

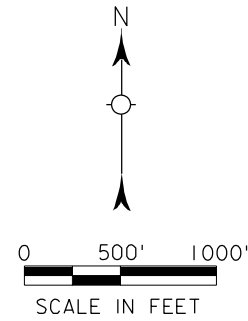
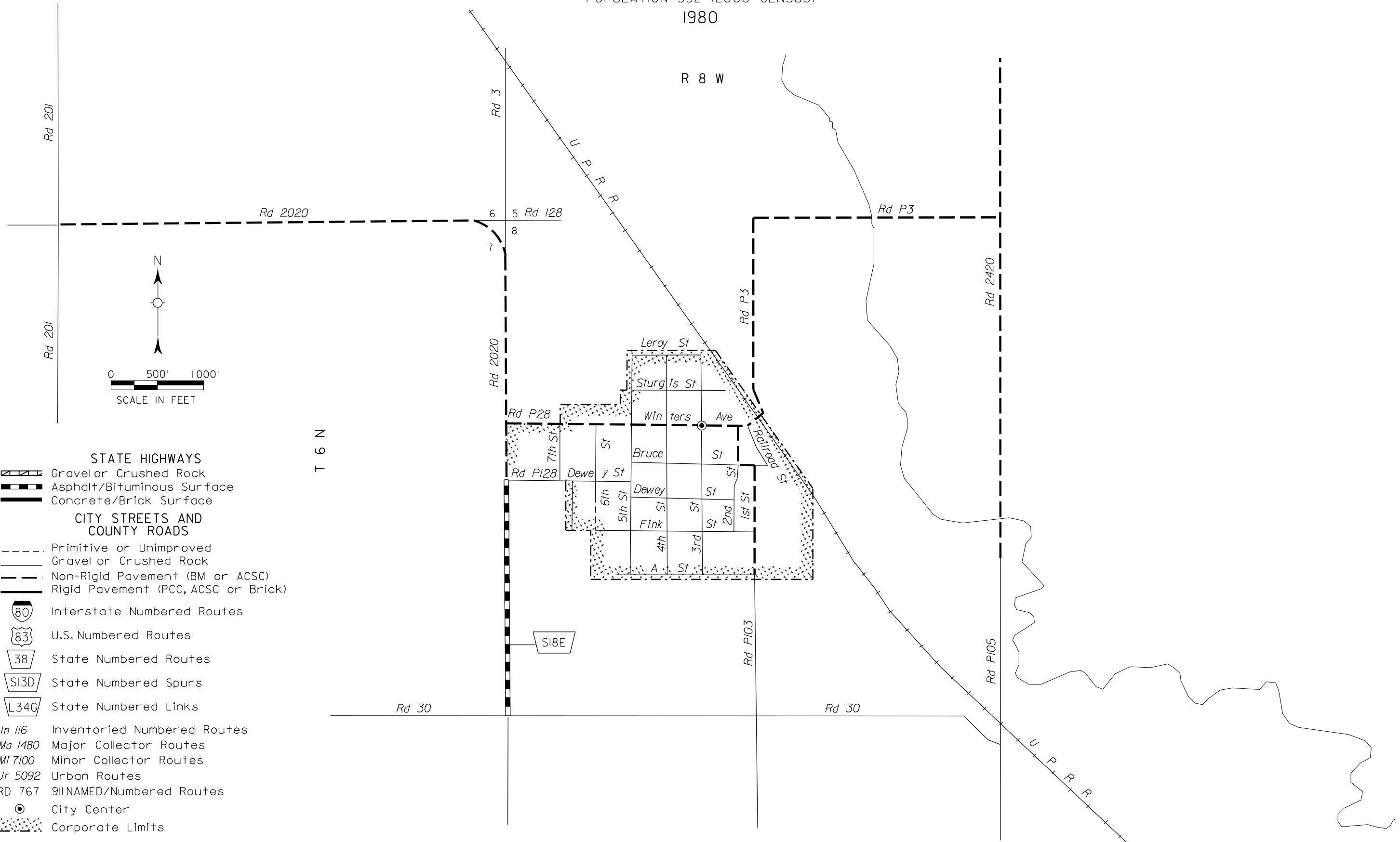
# GLENVIL

CLAY COUNTY  
NEBRASKA

POPULATION 332 (2000 CENSUS)  
1980

R 8 W

T 6 N



### STATE HIGHWAYS

- Gravel or Crushed Rock
- Asphalt/Bituminous Surface
- Concrete/Brick Surface

### CITY STREETS AND COUNTY ROADS

- Primitive or Unimproved
- Gravel or Crushed Rock
- Non-Rigid Pavement (BM or ACSC)
- Rigid Pavement (PCC, ACSC or Brick)

- Interstate Numbered Routes
- U.S. Numbered Routes
- State Numbered Routes
- State Numbered Spurs
- State Numbered Links

- In 116* Inventoried Numbered Routes
- Ma 1480* Major Collector Routes
- Mi 7100* Minor Collector Routes
- Ur 5092* Urban Routes
- RD 767 911NAMED/Numbered Routes

- City Center
- Corporate Limits

CORPORATE LIMITS AS OF 1997  
STATE HIGHWAYS CORRECTED TO 1997

