

# DUNCAN

PLATTE COUNTY  
NEBRASKA

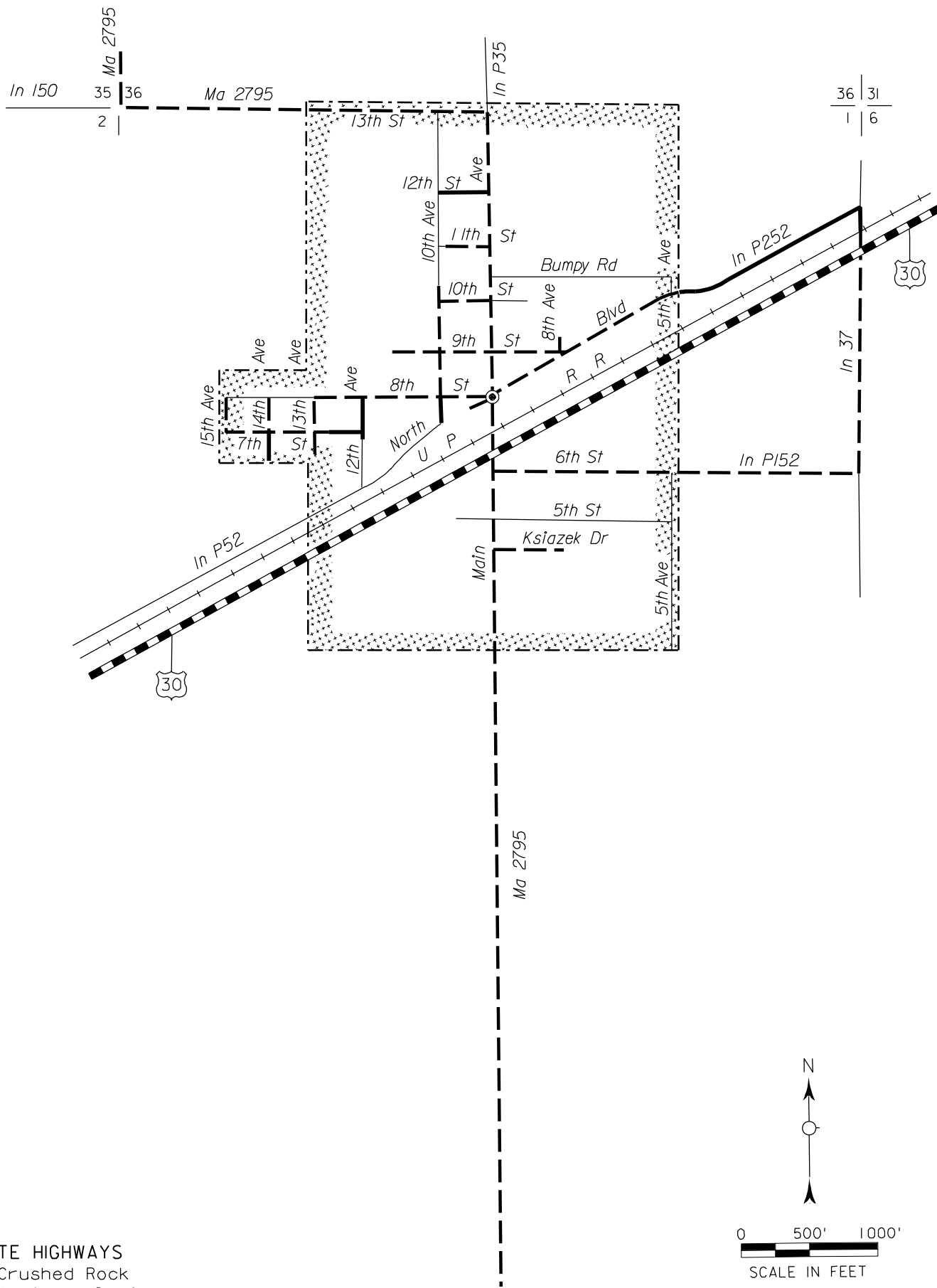
POPULATION 359 (2000 CENSUS)  
1998

R 2 W

R 1 W

T 17 N

T 16 N



## STATE HIGHWAYS

- Gravel or Crushed Rock
- Asphalt/Bituminous Surface
- Concrete/Brick Surface

## CITY STREETS AND COUNTY ROADS

- Primitive or Unimproved
- Gravel or Crushed Rock
- Non-Rigid Pavement (BM or ACSC)
- Rigid Pavement (PCC, ACSC or Brick)

- Interstate Numbered Routes
- U.S. Numbered Routes
- State Numbered Routes
- State Numbered Spurs
- State Numbered Links

- In 116 Inventoried Numbered Routes
- Ma 1480 Major Collector Routes
- MI 7100 Minor Collector Routes
- Ur 5092 Urban Routes
- RD 767 911NAMED/Numbered Routes

- City Center
- Corporate Limits

CORPORATE LIMITS AS OF 1999  
STATE HIGHWAYS CORRECTED TO 1999

