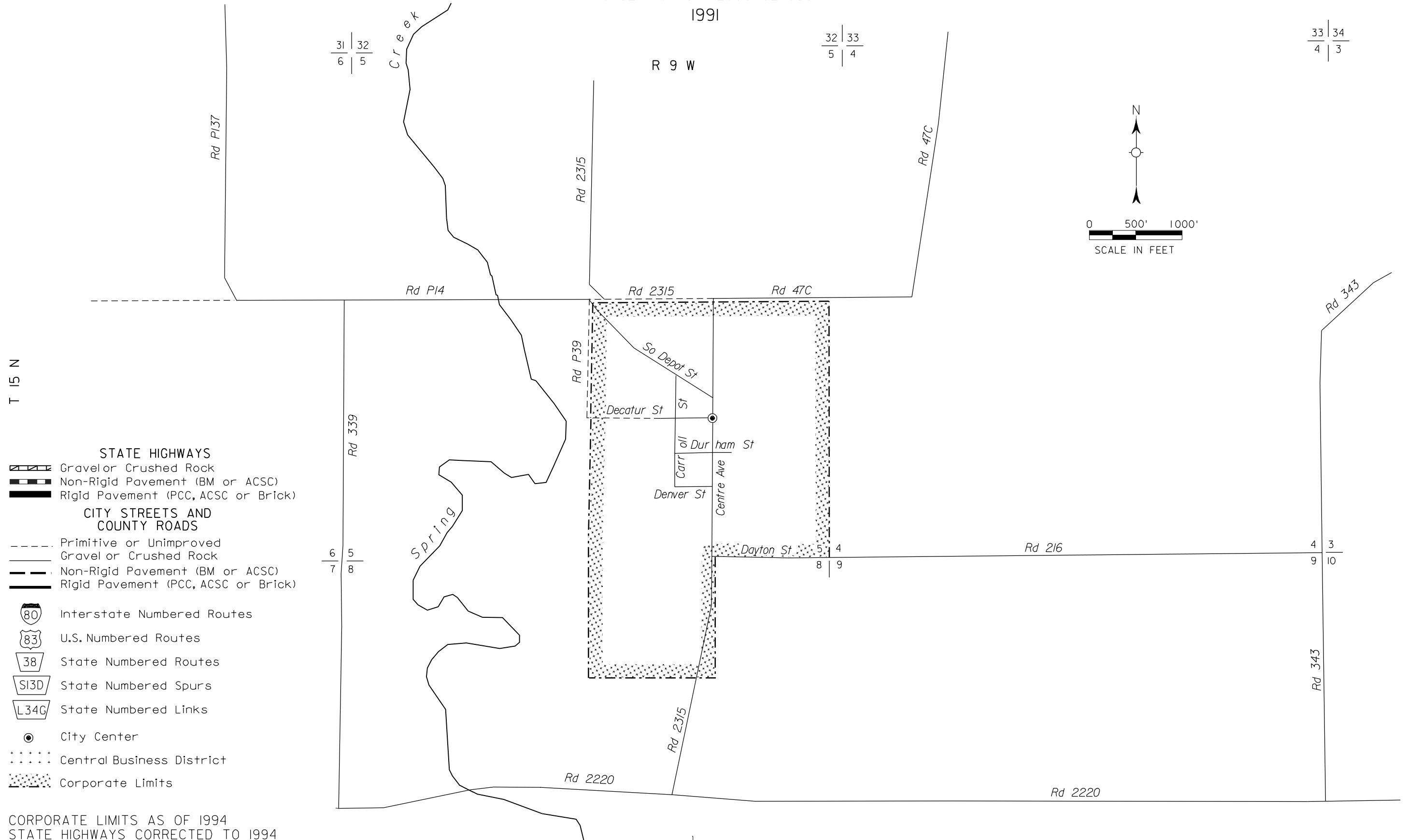


# CUSHING

HOWARD COUNTY  
NEBRASKA

POPULATION 31 (2000 CENSUS)  
1991



- STATE HIGHWAYS**
- Gravel or Crushed Rock
  - Non-Rigid Pavement (BM or ACSC)
  - Rigid Pavement (PCC, ACSC or Brick)
- CITY STREETS AND COUNTY ROADS**
- Primitive or Unimproved
  - Gravel or Crushed Rock
  - Non-Rigid Pavement (BM or ACSC)
  - Rigid Pavement (PCC, ACSC or Brick)
- Interstate Numbered Routes
  - U.S. Numbered Routes
  - State Numbered Routes
  - State Numbered Spurs
  - State Numbered Links
  - City Center
  - Central Business District
  - Corporate Limits

CORPORATE LIMITS AS OF 1994  
STATE HIGHWAYS CORRECTED TO 1994

