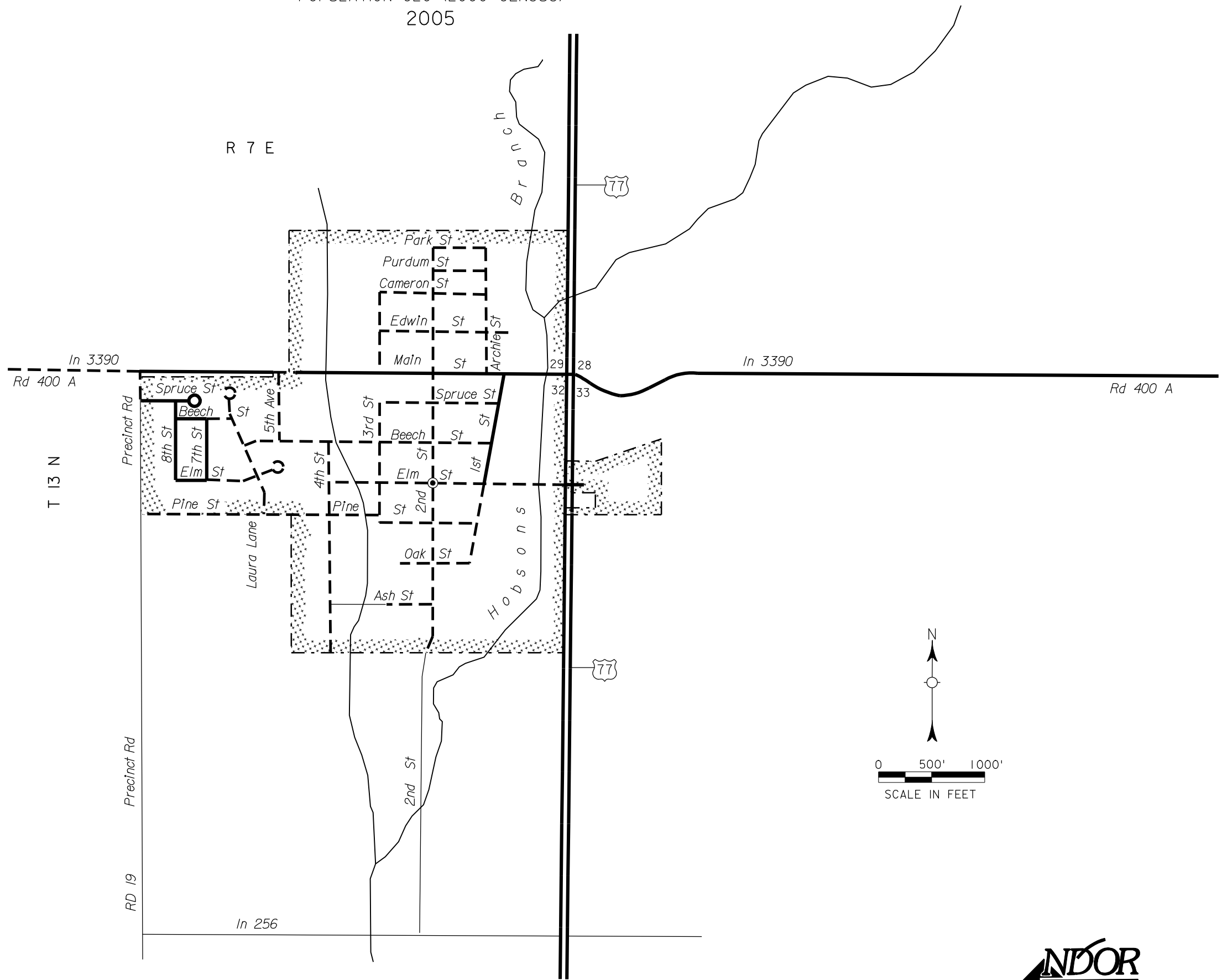


CERESCO

SAUNDERS COUNTY
NEBRASKA

POPULATION 920 (2000 CENSUS)
2005



STATE HIGHWAYS

- Gravel or Crushed Rock
- Asphalt/Bituminous Surface
- Multiple Lane Undivided Highway Asphalt/Bituminous Surface
- Concrete/Brick Surface
- Multiple Lane Undivided Highway Concrete/Brick Surface

CITY STREETS AND COUNTY ROADS

- Primitive or Unimproved
- Gravel or Crushed Rock
- Asphalt/Bituminous Surface
- Concrete/Brick Surface
- Interstate Numbered Routes
- U.S. Numbered Routes
- State Numbered Routes
- State Numbered Spurs
- State Numbered Links

Main St Street/Road Names

City Center

Corporate Limits

CORPORATE LIMITS AS OF 2005
STATE HIGHWAYS CORRECTED TO 2005

NDOR makes no warranties, guarantees, or representations for accuracy of this information and assumes no liability for errors or omissions. Please notify the Department of any errors or omissions identified in this data.

