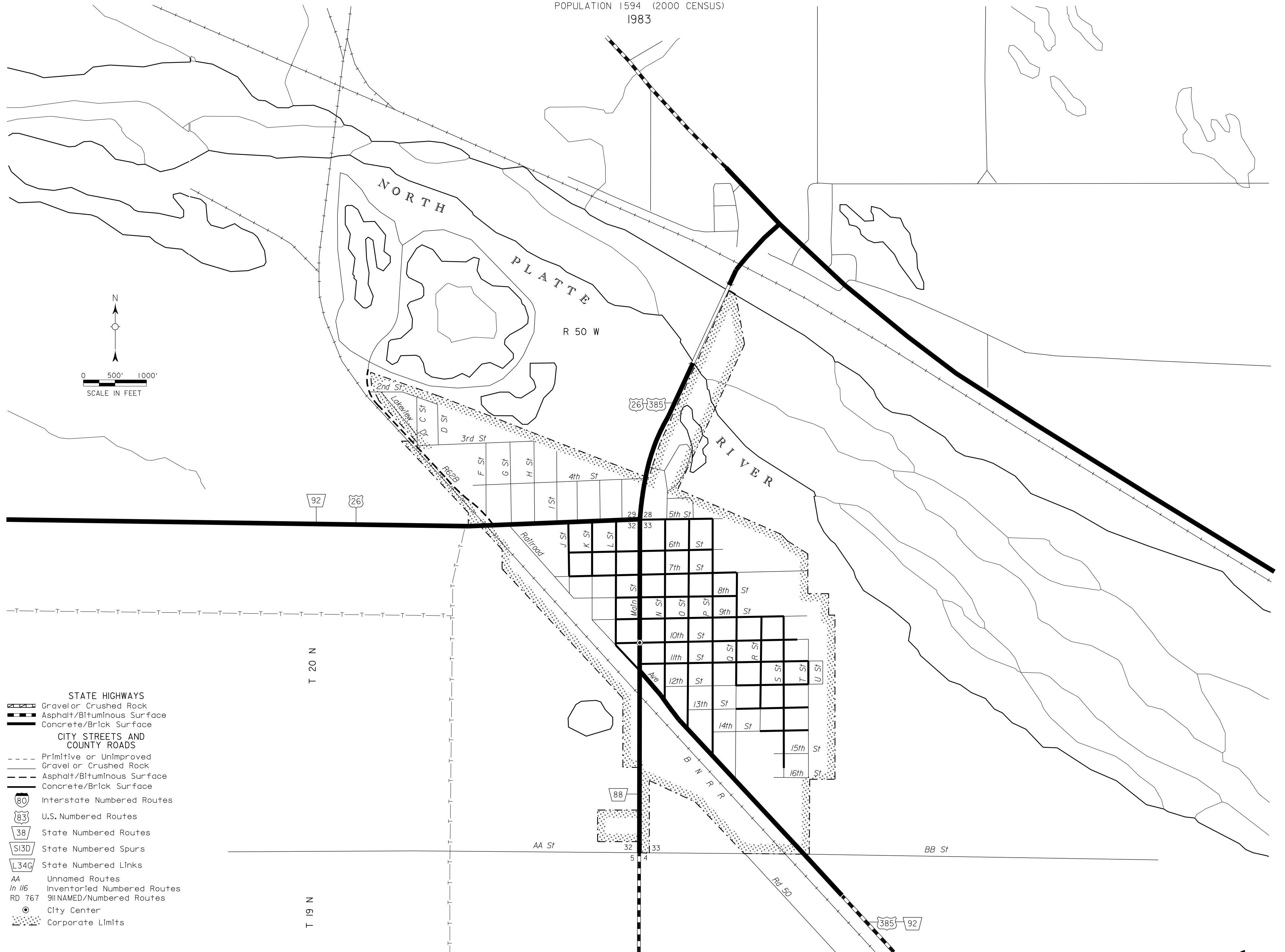


# BRIDGEPORT

MORRILL COUNTY  
NEBRASKA  
POPULATION 1594 (2000 CENSUS)  
1983



- STATE HIGHWAYS**
- Gravel or Crushed Rock
  - Asphalt/Bituminous Surface
  - Concrete/Brick Surface
- CITY STREETS AND COUNTY ROADS**
- Primitive or Unimproved
  - Gravel or Crushed Rock
  - Asphalt/Bituminous Surface
  - Concrete/Brick Surface
- Interstate Numbered Routes**
- U.S. Numbered Routes
  - State Numbered Routes
  - State Numbered Spurs
  - State Numbered Links
- AA** Unnamed Routes  
**In 116** Inventoried Numbered Routes  
**RD 767** 911 NAMED/Numbered Routes
- City Center**
- Corporate Limits**

CORPORATE LIMITS AS OF 1999  
STATE HIGHWAYS CORRECTED TO 1999

