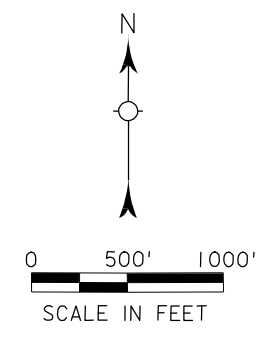


# BOELUS

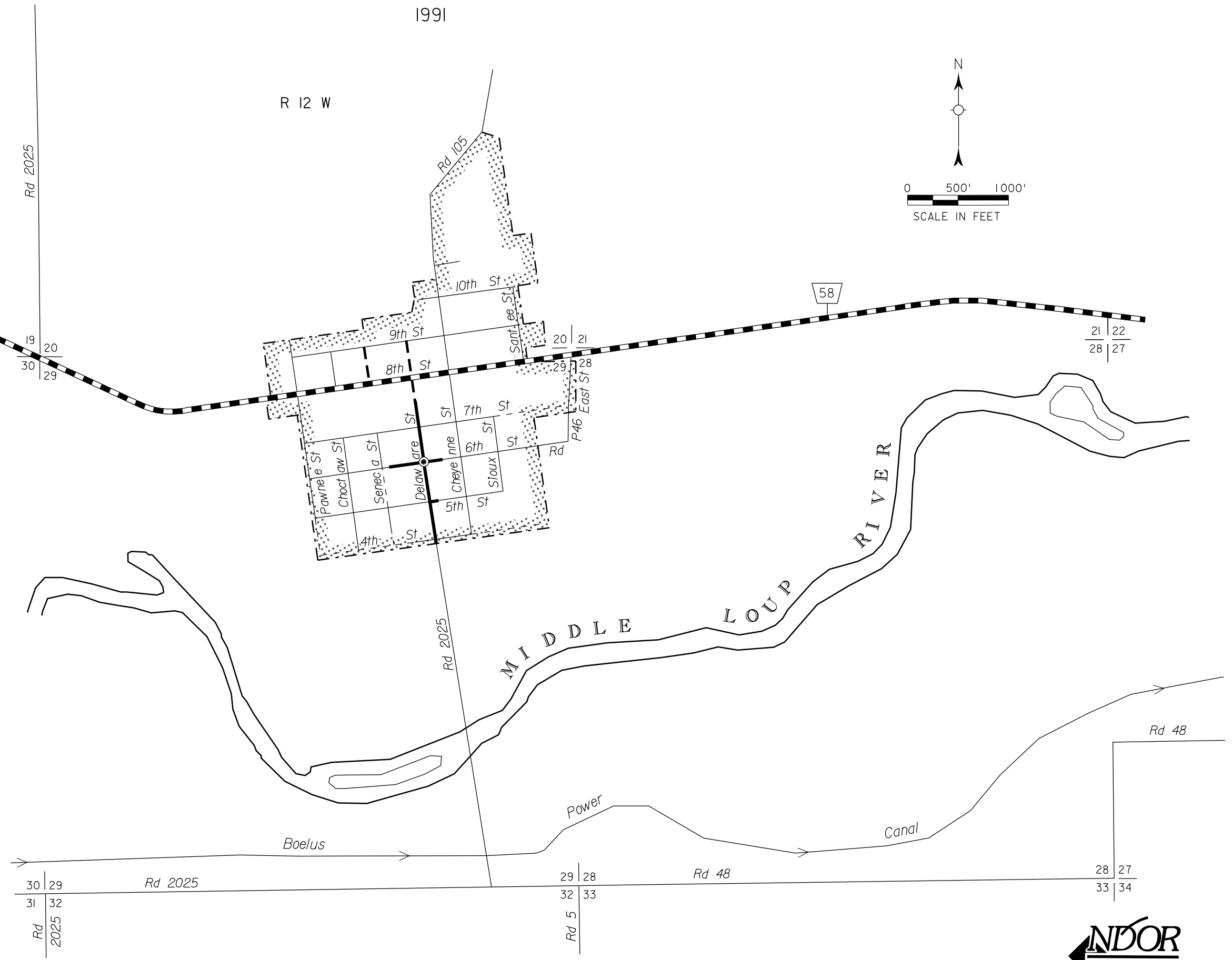
HOWARD COUNTY  
NEBRASKA  
POPULATION 203 (1990 CENSUS)  
1991

R 12 W



T 13 N

- STATE HIGHWAYS**
- Gravel or Crushed Rock
  - Asphalt/Bituminous Surface
  - Multiple Lane Undivided Highway  
Asphalt/Bituminous Surface
  - Concrete/Brick Surface
  - Multiple Lane Undivided Highway  
Concrete/Brick Surface
- CITY STREETS AND COUNTY ROADS**
- Primitive or Unimproved
  - Gravel or Crushed Rock
  - Asphalt/Bituminous Surface
  - Concrete/Brick Surface
  - Interstate Numbered Routes
  - U.S. Numbered Routes
  - State Numbered Routes
  - State Numbered Spurs
  - State Numbered Links
  - AA St Unnamed Routes
  - In 116 Inventoried Numbered Routes
  - RD 767 911 NAMED/Numbered Routes
  - City Center
  - Corporate Limits



CORPORATE LIMITS AS OF 2005  
STATE HIGHWAYS CORRECTED TO 2005

