

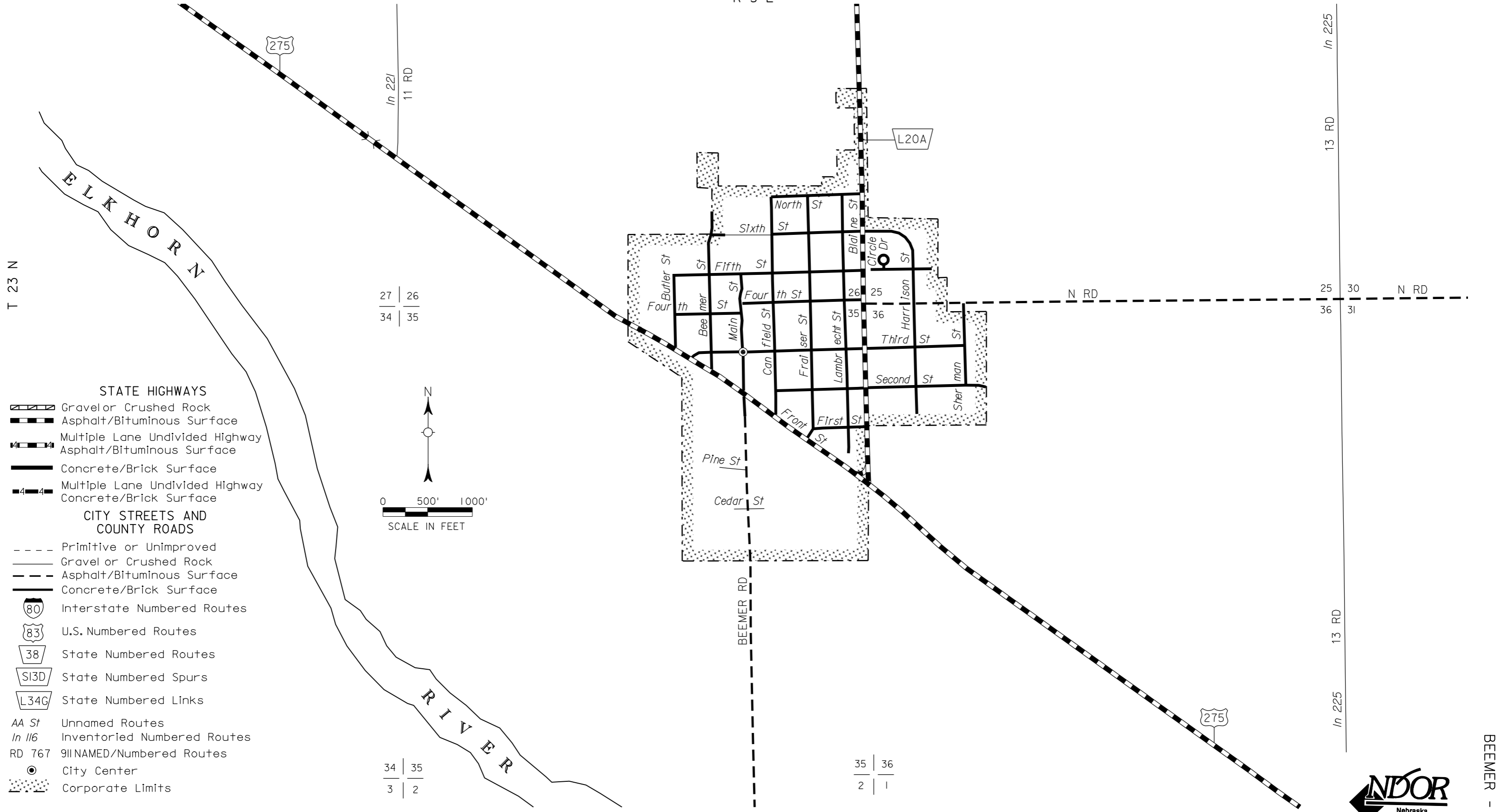
BEEMER

CUMING COUNTY
NEBRASKA

POPULATION 773 (2000 CENSUS)

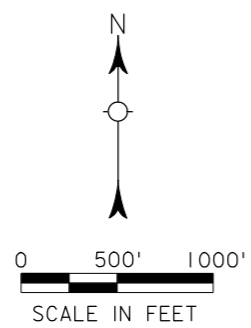
2008

R 5 E



- STATE HIGHWAYS**
- Gravel or Crushed Rock
 - Asphalt/Bituminous Surface
 - Multiple Lane Undivided Highway Asphalt/Bituminous Surface
 - Concrete/Brick Surface
 - Multiple Lane Undivided Highway Concrete/Brick Surface
- CITY STREETS AND COUNTY ROADS**
- Primitive or Unimproved
 - Gravel or Crushed Rock
 - Asphalt/Bituminous Surface
 - Concrete/Brick Surface
 - Interstate Numbered Routes
 - U.S. Numbered Routes
 - State Numbered Routes
 - State Numbered Spurs
 - State Numbered Links
 - AA St Unnamed Routes
 - In 116 Inventoried Numbered Routes
 - RD 767 911 NAMED/Numbered Routes
 - City Center
 - Corporate Limits

27 | 26
34 | 35



34 | 35
3 | 2

35 | 36
2 | 1

CORPORATE LIMITS AS OF 2008
STATE HIGHWAYS CORRECTED TO 2008

NDOR makes no warranties, guarantees, or representations for accuracy of this information and assumes no liability for errors or omissions. Please notify the Department of any errors or omissions identified in this data.

