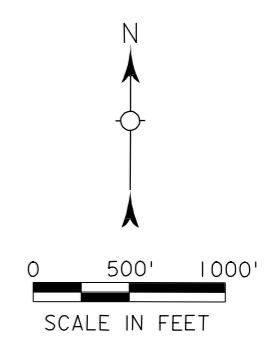
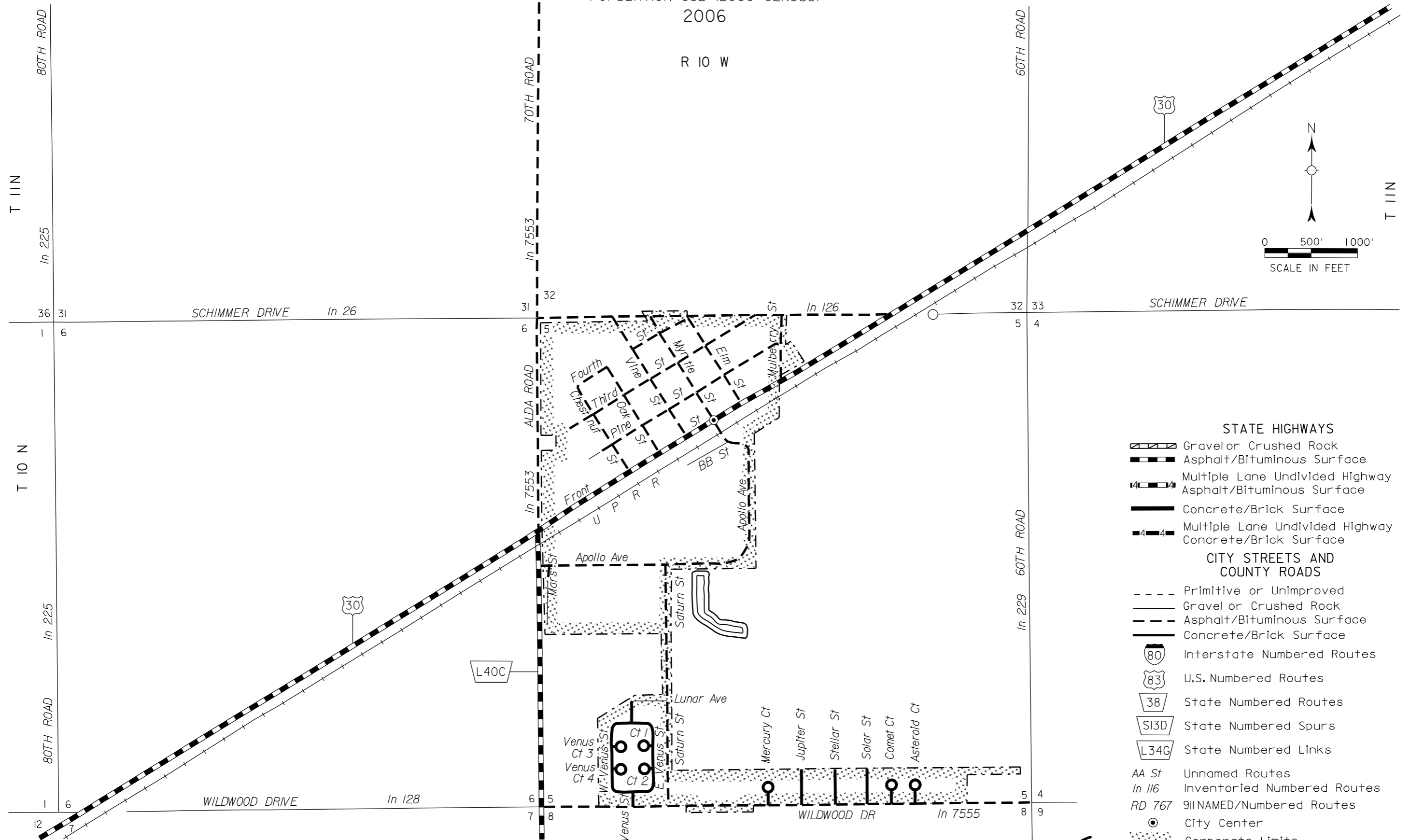


ALDA

HALL COUNTY
NEBRASKA

POPULATION 652 (2000 CENSUS)
2006

R 10 W



- STATE HIGHWAYS**
- Gravel or Crushed Rock
 - Asphalt/Bituminous Surface
 - Multiple Lane Undivided Highway Asphalt/Bituminous Surface
 - Concrete/Brick Surface
 - Multiple Lane Undivided Highway Concrete/Brick Surface
- CITY STREETS AND COUNTY ROADS**
- Primitive or Unimproved
 - Gravel or Crushed Rock
 - Asphalt/Bituminous Surface
 - Concrete/Brick Surface
 - Interstate Numbered Routes
 - U.S. Numbered Routes
 - State Numbered Routes
 - State Numbered Spurs
 - State Numbered Links
 - Unnamed Routes
 - Inventoried Numbered Routes
 - 911 NAMED/Numbered Routes
 - City Center
 - Corporate Limits



CORPORATE LIMITS AS OF 2006
STATE HIGHWAYS CORRECTED TO 2006