

# INFORMATIONAL PROPOSAL

FOR INFORMATION ONLY, NOT TO BE USED FOR BIDDING

NEBRASKA DEPARTMENT OF ROADS  
LETTING DATE : May 23, 2002

CALL ORDER: F05                      CONTRACT ID: 2045

CONTROL NO./SEQ. NO.: 22045    /000 PROJECT NO.: STPP-275-7(183)

TENTATIVE START DATE: 10/07/02              CONTRACT TIME:    25 WORKING DAYS

LOCATION: US-275/N-92 ("L" STREET) AT 60TH, OMAHA.  
IN COUNTY: DOUGLAS

BIDDER

GROUP 1 GRADING  
GROUP 3 CONCRETE PAVEMENT  
GROUP 4 CULVERTS  
GROUP 8B ELECTRIC  
GROUP 10 GENERAL ITEMS

SEE SPECIAL PROVISIONS FOR GROUP TIES

## NOTES

THE TOTAL AMOUNT OF WORK WHICH WILL BE ACCEPTED IN THIS LETTING IS LIMITED TO \$\_\_\_\_\_.

THE NUMBER OF \_\_\_\_\_ CONTRACTS WHICH WILL BE ACCEPTED IN THIS LETTING IS LIMITED TO \_\_\_\_\_.

### **NOTICE TO ALL BIDDERS**

To report bid rigging activities, call: 1-800-424-9071

The U.S. Department of Transportation (DOT) operates the above toll-free "hotline" Monday through Friday, 8:00 a.m. to 5:00 p.m. eastern time. Anyone with knowledge of possible bid rigging, bidder collusion, or other fraudulent activities should use the "hotline" to report such activities.

The "hotline" is part of the DOT's continuing effort to identify and investigate highway construction contract fraud and abuse and is operated under the direction of the DOT Inspector General. All information will be treated confidentially and caller anonymity will be respected.

### **LETTING QUESTIONS**

Prior to the letting, any questions pertaining to the Special Provisions or the plans for this project should be directed to Construction Division personnel at (402) 479-4568 or (402) 479-4529.

**REQUIRED CONTRACT PROVISIONS  
FEDERAL-AID CONSTRUCTION CONTRACTS**

	Page
I. General .....	1
II. Nondiscrimination .....	1
III. Nonsegregated Facilities .....	3
IV. Payment of Predetermined Minimum Wage .....	3
V. Statements and Payrolls .....	6
VI. Record of Materials, Supplies, and Labor .....	6
VII. Subletting or Assigning the Contract .....	7
VIII. Safety: Accident Prevention .....	7
IX. False Statements Concerning Highway Projects .....	7
X. Implementation of Clean Air Act and Federal Water Pollution Control Act .....	8
XI. Certification Regarding Debarment, Suspension, Ineligibility, and Voluntary Exclusion .....	8
XII. Certification Regarding Use of Contract Funds for Lobbying .....	9

**ATTACHMENTS**

- A. Employment Preference for Appalachian Contracts  
(included in Appalachian contracts only)

**I. GENERAL**

1. These contract provisions shall apply to all work performed on the contract by the contractor's own organization and with the assistance of workers under the contractor's immediate superintendence and to all work performed on the contract by piece-work, station work, or by subcontract.

2. Except as otherwise provided for in each section, the contractor shall insert in each subcontract all of the stipulations contained in these Required Contract Provisions, and further require their inclusion in any lower tier subcontract or purchase order that may in turn be made. The Required Contract Provisions shall not be incorporated by reference in any case. The prime contractor shall be responsible for compliance by any subcontractor or lower tier subcontractor with these Required Contract Provisions.

3. A breach of any of the stipulations contained in these Required Contract Provisions shall be sufficient grounds for termination of the contract.

4. A breach of the following clauses of the Required Contract Provisions may also be grounds for debarment as provided in 29 CFR 5.12:

Section I, paragraph 2;  
Section IV, paragraphs 1, 2, 3, 4, and 7;  
Section V, paragraphs 1 and 2a through 2g.

5. Disputes arising out of the labor standards provisions of Section IV (except paragraph 5) and Section V of these Required Contract Provisions shall not be subject to the general disputes clause of this contract. Such disputes shall be resolved in accordance with the procedures of the U.S. Department of Labor (DOL) as set forth in 29 CFR 5, 6, and 7. Disputes within the meaning of this clause include disputes between the contractor (or any of its subcontractors) and the contracting agency, the DOL, or the contractor's employees or their representatives.

6. **Selection of Labor:** During the performance of this contract, the contractor shall not:

- a. discriminate against labor from any other State, possession, or territory of the United States (except for employment

preference for Appalachian contracts, when applicable, as specified in Attachment A), or

- b. employ convict labor for any purpose within the limits of the project unless it is labor performed by convicts who are on parole, supervised release, or probation.

**II. NONDISCRIMINATION**

(Applicable to all Federal-aid construction contracts and to all related subcontracts of \$10,000 or more.)

1. **Equal Employment Opportunity:** Equal employment opportunity (EEO) requirements not to discriminate and to take affirmative action to assure equal opportunity as set forth under laws, executive orders, rules, regulations (28 CFR 35, 29 CFR 1630 and 41 CFR 60) and orders of the Secretary of Labor as modified by the provisions prescribed herein, and imposed pursuant to 23 U.S.C. 140 shall constitute the EEO and specific affirmative action standards for the contractor's project activities under this contract. The Equal Opportunity Construction Contract Specifications set forth under 41 CFR 60-4.3 and the provisions of the American Disabilities Act of 1990 (42 U.S.C. 12101 et seq.) set forth under 28 CFR 35 and 29 CFR 1630 are incorporated by reference in this contract. In the execution of this contract, the contractor agrees to comply with the following minimum specific requirement activities of EEO:

- a. The contractor will work with the State highway agency (SHA) and the Federal Government in carrying out EEO obligations and in their review of his/her activities under the contract.

- b. The contractor will accept as his operating policy the following statement:

"It is the policy of this Company to assure that applicants are employed, and that employees are treated during employment, without regard to their race, religion, sex, color, national origin, age or disability. Such action shall include: employment, upgrading, demotion, or transfer; recruitment or recruitment advertising; layoff or termination; rates of pay or other forms of compensation; and selection for training, including apprenticeship, preapprenticeship, and/or on-the-job training."

2. **EEO Officer:** The contractor will designate and make known to the SHA contracting officers an EEO Officer who will have the responsibility for and must be capable of effectively administering and promoting an active contractor program of EEO and who must be assigned adequate authority and responsibility to do so.

3. **Dissemination of Policy:** All members of the contractor's staff who are authorized to hire, supervise, promote, and discharge employees, or who recommend such action, or who are substantially involved in such action, will be made fully cognizant of, and will implement, the contractor's EEO policy and contractual responsibilities to provide EEO in each grade and classification of employment. To ensure that the above agreement will be met, the following actions will be taken as a minimum:

- a. Periodic meetings of supervisory and personnel office employees will be conducted before the start of work and then not less often than once every six months, at which time the contractor's EEO policy and its implementation will be reviewed and explained. The meetings will be conducted by the EEO Officer.

b. All new supervisory or personnel office employees will be given a thorough indoctrination by the EEO Officer, covering all major aspects of the contractor's EEO obligations within thirty days following their reporting for duty with the contractor.

c. All personnel who are engaged in direct recruitment for the project will be instructed by the EEO Officer in the contractor's procedures for locating and hiring minority group employees.

d. Notices and posters setting forth the contractor's EEO policy will be placed in areas readily accessible to employees, applicants for employment and potential employees.

e. The contractor's EEO policy and the procedures to implement such policy will be brought to the attention of employees by means of meetings, employee handbooks, or other appropriate means.

4. **Recruitment:** When advertising for employees, the contractor will include in all advertisements for employees the notation: "An Equal Opportunity Employer." All such advertisements will be placed in publications having a large circulation among minority groups in the area from which the project work force would normally be derived.

a. The contractor will, unless precluded by a valid bargaining agreement, conduct systematic and direct recruitment through public and private employee referral sources likely to yield qualified minority group applicants. To meet this requirement, the contractor will identify sources of potential minority group employees, and establish with such identified sources procedures whereby minority group applicants may be referred to the contractor for employment consideration.

b. In the event the contractor has a valid bargaining agreement providing for exclusive hiring hall referrals, he is expected to observe the provisions of that agreement to the extent that the system permits the contractor's compliance with EEO contract provisions. (The DOL has held that where implementation of such agreements have the effect of discriminating against minorities or women, or obligates the contractor to do the same, such implementation violates Executive Order 11246, as amended.)

c. The contractor will encourage his present employees to refer minority group applicants for employment. Information and procedures with regard to referring minority group applicants will be discussed with employees.

5. **Personnel Actions:** Wages, working conditions, and employee benefits shall be established and administered, and personnel actions of every type, including hiring, upgrading, promotion, transfer, demotion, layoff, and termination, shall be taken without regard to race, color, religion, sex, national origin, age or disability. The following procedures shall be followed:

a. The contractor will conduct periodic inspections of project sites to insure that working conditions and employee facilities do not indicate discriminatory treatment of project site personnel.

b. The contractor will periodically evaluate the spread of wages paid within each classification to determine any evidence of discriminatory wage practices.

c. The contractor will periodically review selected personnel actions in depth to determine whether there is evidence of discrimination. Where evidence is found, the contractor will promptly take corrective action. If the review indicates that the discrimination may extend beyond the actions reviewed, such corrective action shall include all affected persons.

d. The contractor will promptly investigate all complaints of alleged discrimination made to the contractor in connection with his obligations under this contract, will attempt to resolve

such complaints, and will take appropriate corrective action within a reasonable time. If the investigation indicates that the discrimination may affect persons other than the complainant, such corrective action shall include such other persons. Upon completion of each investigation, the contractor will inform every complainant of all of his avenues of appeal.

#### 6. Training and Promotion:

a. The contractor will assist in locating, qualifying, and increasing the skills of minority group and women employees, and applicants for employment.

b. Consistent with the contractor's work force requirements and as permissible under Federal and State regulations, the contractor shall make full use of training programs, i.e., apprenticeship, and on-the-job training programs for the geographical area of contract performance. Where feasible, 25 percent of apprentices or trainees in each occupation shall be in their first year of apprenticeship or training. In the event a special provision for training is provided under this contract, this subparagraph will be superseded as indicated in the special provision.

c. The contractor will advise employees and applicants for employment of available training programs and entrance requirements for each.

d. The contractor will periodically review the training and promotion potential of minority group and women employees and will encourage eligible employees to apply for such training and promotion.

7. **Unions:** If the contractor relies in whole or in part upon unions as a source of employees, the contractor will use his/her best efforts to obtain the cooperation of such unions to increase opportunities for minority groups and women within the unions, and to effect referrals by such unions of minority and female employees. Actions by the contractor either directly or through a contractor's association acting as agent will include the procedures set forth below:

a. The contractor will use best efforts to develop, in cooperation with the unions, joint training programs aimed toward qualifying more minority group members and women for membership in the unions and increasing the skills of minority group employees and women so that they may qualify for higher paying employment.

b. The contractor will use best efforts to incorporate an EEO clause into each union agreement to the end that such union will be contractually bound to refer applicants without regard to their race, color, religion, sex, national origin, age or disability.

c. The contractor is to obtain information as to the referral practices and policies of the labor union except that to the extent such information is within the exclusive possession of the labor union and such labor union refuses to furnish such information to the contractor, the contractor shall so certify to the SHA and shall set forth what efforts have been made to obtain such information.

d. In the event the union is unable to provide the contractor with a reasonable flow of minority and women referrals within the time limit set forth in the collective bargaining agreement, the contractor will, through independent recruitment efforts, fill the employment vacancies without regard to race, color, religion, sex, national origin, age or disability; making full efforts to obtain qualified and/or qualifiable minority group persons and women. (The DOL has held that it shall be no excuse that the union with which the contractor has a collective bargaining agreement providing for exclusive referral failed to refer minority employees.) In the event the union referral practice prevents the contractor from meeting the obligations pursuant to Executive Order 11246 (Rev. 3-94)

tive Order 11246, as amended, and these special provisions, such contractor shall immediately notify the SHA.

**8. Selection of Subcontractors, Procurement of Materials and Leasing of Equipment:** The contractor shall not discriminate on the grounds of race, color, religion, sex, national origin, age or disability in the selection and retention of subcontractors, including procurement of materials and leases of equipment.

a. The contractor shall notify all potential subcontractors and suppliers of his/her EEO obligations under this contract.

b. Disadvantaged business enterprises (DBE), as defined in 49 CFR 23, shall have equal opportunity to compete for and perform subcontracts which the contractor enters into pursuant to this contract. The contractor will use his best efforts to solicit bids from and to utilize DBE subcontractors or subcontractors with meaningful minority group and female representation among their employees. Contractors shall obtain lists of DBE construction firms from SHA personnel.

c. The contractor will use his best efforts to ensure subcontractor compliance with their EEO obligations.

**9. Records and Reports:** The contractor shall keep such records as necessary to document compliance with the EEO requirements. Such records shall be retained for a period of three years following completion of the contract work and shall be available at reasonable times and places for inspection by authorized representatives of the SHA and the FHWA.

a. The records kept by the contractor shall document the following:

(1) The number of minority and non-minority group members and women employed in each work classification on the project;

(2) The progress and efforts being made in cooperation with unions, when applicable, to increase employment opportunities for minorities and women;

(3) The progress and efforts being made in locating, hiring, training, qualifying, and upgrading minority and female employees; and

(4) The progress and efforts being made in securing the services of DBE subcontractors or subcontractors with meaningful minority and female representation among their employees.

b. The contractors will submit an annual report to the SHA each July for the duration of the project, indicating the number of minority, women, and non-minority group employees currently engaged in each work classification required by the contract work. This information is to be reported on Form FHWA-1391. If on-the-job training is being required by special provision, the contractor will be required to collect and report training data.

### III. NONSEGREGATED FACILITIES

(Applicable to all Federal-aid construction contracts and to all related subcontracts of \$10,000 or more.)

a. By submission of this bid, the execution of this contract or subcontract, or the consummation of this material supply agreement or purchase order, as appropriate, the bidder, Federal-aid construction contractor, subcontractor, material supplier, or vendor, as appropriate, certifies that the firm does not maintain or provide for its employees any segregated facilities at any of its establishments, and that the firm does not permit its employees to perform their services at any location, under its control, where segregated facilities are maintained. The firm agrees that a breach of this certification is a violation of the EEO provisions of this contract. The firm further certifies that no employee will be denied access to adequate facilities on the basis of sex or disability.

b. As used in this certification, the term "segregated facilities" means any waiting rooms, work areas, restrooms and washrooms, restaurants and other eating areas, timeclocks, locker rooms, and other storage or dressing areas, parking lots, drinking fountains, recreation or entertainment areas, transportation, and housing facilities provided for employees which are segregated by explicit directive, or are, in fact, segregated on the basis of race, color, religion, national origin, age or disability, because of habit, local custom, or otherwise. The only exception will be for the disabled when the demands for accessibility override (e.g. disabled parking).

c. The contractor agrees that it has obtained or will obtain identical certification from proposed subcontractors or material suppliers prior to award of subcontracts or consummation of material supply agreements of \$10,000 or more and that it will retain such certifications in its files.

### IV. PAYMENT OF PREDETERMINED MINIMUM WAGE

(Applicable to all Federal-aid construction contracts exceeding \$2,000 and to all related subcontracts, except for projects located on roadways classified as local roads or rural minor collectors, which are exempt.)

#### 1. General:

a. All mechanics and laborers employed or working upon the site of the work will be paid unconditionally and not less often than once a week and without subsequent deduction or rebate on any account [except such payroll deductions as are permitted by regulations (29 CFR 3) issued by the Secretary of Labor under the Copeland Act (40 U.S.C. 276c)] the full amounts of wages and bona fide fringe benefits (or cash equivalents thereof) due at time of payment. The payment shall be computed at wage rates not less than those contained in the wage determination of the Secretary of Labor (hereinafter "the wage determination") which is attached hereto and made a part hereof, regardless of any contractual relationship which may be alleged to exist between the contractor or its subcontractors and such laborers and mechanics. The wage determination (including any additional classifications and wage rates conformed under paragraph 2 of this Section IV and the DOL poster (WH-1321) or Form FHWA-1495) shall be posted at all times by the contractor and its subcontractors at the site of the work in a prominent and accessible place where it can be easily seen by the workers. For the purpose of this Section, contributions made or costs reasonably anticipated for bona fide fringe benefits under Section 1(b)(2) of the Davis-Bacon Act (40 U.S.C. 276a) on behalf of laborers or mechanics are considered wages paid to such laborers or mechanics, subject to the provisions of Section IV, paragraph 3b, hereof. Also, for the purpose of this Section, regular contributions made or costs incurred for more

than a weekly period (but not less often than quarterly) under plans, funds, or programs, which cover the particular weekly period, are deemed to be constructively made or incurred during such weekly period. Such laborers and mechanics shall be paid the appropriate wage rate and fringe benefits on the wage determination for the classification of work actually performed, without regard to skill, except as provided in paragraphs 4 and 5 of this Section IV.

b. Laborers or mechanics performing work in more than one classification may be compensated at the rate specified for each classification for the time actually worked therein, provided, that the employer's payroll records accurately set forth the time spent in each classification in which work is performed.

c. All rulings and interpretations of the Davis-Bacon Act and related acts contained in 29 CFR 1, 3, and 5 are herein incorporated by reference in this contract.

## 2. Classification:

a. The SHA contracting officer shall require that any class of laborers or mechanics employed under the contract, which is not listed in the wage determination, shall be classified in conformance with the wage determination.

b. The contracting officer shall approve an additional classification, wage rate and fringe benefits only when the following criteria have been met:

(1) the work to be performed by the additional classification requested is not performed by a classification in the wage determination;

(2) the additional classification is utilized in the area by the construction industry;

(3) the proposed wage rate, including any bona fide fringe benefits, bears a reasonable relationship to the wage rates contained in the wage determination; and

(4) with respect to helpers, when such a classification prevails in the area in which the work is performed.

c. If the contractor or subcontractors, as appropriate, the laborers and mechanics (if known) to be employed in the additional classification or their representatives, and the contracting officer agree on the classification and wage rate (including the amount designated for fringe benefits where appropriate), a report of the action taken shall be sent by the contracting officer to the DOL, Administrator of the Wage and Hour Division, Employment Standards Administration, Washington, D.C. 20210. The Wage and Hour Administrator, or an authorized representative, will approve, modify, or disapprove every additional classification action within 30 days of receipt and so advise the contracting officer or will notify the contracting officer within the 30-day period that additional time is necessary.

d. In the event the contractor or subcontractors, as appropriate, the laborers or mechanics to be employed in the additional classification or their representatives, and the contracting officer do not agree on the proposed classification and wage rate (including the amount designated for fringe benefits, where appropriate), the contracting officer shall refer the questions, including the views of all interested parties and the recommendation of the contracting officer, to the Wage and Hour Administrator for determination. Said Administrator, or an authorized representative, will issue a determination within 30 days of receipt and so advise the contracting officer or will notify the contracting officer within the 30-day period that additional time is necessary.

e. The wage rate (including fringe benefits where appropriate) determined pursuant to paragraph 2c or 2d of this Section IV shall be paid to all workers performing work in the additional classification from the first day on which work is performed in the classification.

## 3. Payment of Fringe Benefits:

a. Whenever the minimum wage rate prescribed in the contract for a class of laborers or mechanics includes a fringe benefit which is not expressed as an hourly rate, the contractor or subcontractors, as appropriate, shall either pay the benefit as stated in the wage determination or shall pay another bona fide fringe benefit or an hourly case equivalent thereof.

b. If the contractor or subcontractor, as appropriate, does not make payments to a trustee or other third person, he/she may consider as a part of the wages of any laborer or mechanic the amount of any costs reasonably anticipated in providing bona fide fringe benefits under a plan or program, provided, that the Secretary of Labor has found, upon the written request of the contractor, that the applicable standards of the Davis-Bacon Act have been met. The Secretary of Labor may require the contractor to set aside in a separate account assets for the meeting of obligations under the plan or program.

## 4. Apprentices and Trainees (Programs of the U.S. DOL) and Helpers:

### a. Apprentices:

(1) Apprentices will be permitted to work at less than the predetermined rate for the work they performed when they are employed pursuant to and individually registered in a bona fide apprenticeship program registered with the DOL, Employment and Training Administration, Bureau of Apprenticeship and Training, or with a State apprenticeship agency recognized by the Bureau, or if a person is employed in his/her first 90 days of probationary employment as an apprentice in such an apprenticeship program, who is not individually registered in the program, but who has been certified by the Bureau of Apprenticeship and Training or a State apprenticeship agency (where appropriate) to be eligible for probationary employment as an apprentice.

(2) The allowable ratio of apprentices to journeyman-level employees on the job site in any craft classification shall not be greater than the ratio permitted to the contractor as to the entire work force under the registered program. Any employee listed on a payroll at an apprentice wage rate, who is not registered or otherwise employed as stated above, shall be paid not less than the applicable wage rate listed in the wage determination for the classification of work actually performed. In addition, any apprentice performing work on the job site in excess of the ratio permitted under the registered program shall be paid not less than the applicable wage rate on the wage determination for the work actually performed. Where a contractor or subcontractor is performing construction on a project in a locality other than that in which its program is registered, the ratios and wage rates (expressed in percentages of the journeyman-level hourly rate) specified in the contractor's or subcontractor's registered program shall be observed.

(3) Every apprentice must be paid at not less than the rate specified in the registered program for the apprentice's level of progress, expressed as a percentage of the journeyman-level hourly rate specified in the applicable wage determination. Apprentices shall be paid fringe benefits in accordance with the provisions of the apprenticeship program. If the apprenticeship program does not specify fringe benefits, apprentices must be paid the full amount of fringe benefits listed on the wage determination for the applicable classification. If the Administrator for

the Wage and Hour Division determines that a different practice prevails for the applicable apprentice classification, fringes shall be paid in accordance with that determination

(4) In the event the Bureau of Apprenticeship and Training, or a State apprenticeship agency recognized by the Bureau, withdraws approval of an apprenticeship program, the contractor or subcontractor will no longer be permitted to utilize apprentices at less than the applicable predetermined rate for the comparable work performed by regular employees until an acceptable program is approved.

**b. Trainees:**

(1) Except as provided in 29 CFR 5.16, trainees will not be permitted to work at less than the predetermined rate for the work performed unless they are employed pursuant to and individually registered in a program which has received prior approval, evidenced by formal certification by the DOL, Employment and Training Administration.

(2) The ratio of trainees to journeyman-level employees on the job site shall not be greater than permitted under the plan approved by the Employment and Training Administration. Any employee listed on the payroll at a trainee rate who is not registered and participating in a training plan approved by the Employment and Training Administration shall be paid not less than the applicable wage rate on the wage determination for the classification of work actually performed. In addition, any trainee performing work on the job site in excess of the ratio permitted under the registered program shall be paid not less than the applicable wage rate on the wage determination for the work actually performed.

(3) Every trainee must be paid at not less than the rate specified in the approved program for his/her level of progress, expressed as a percentage of the journeyman-level hourly rate specified in the applicable wage determination. Trainees shall be paid fringe benefits in accordance with the provisions of the trainee program. If the trainee program does not mention fringe benefits, trainees shall be paid the full amount of fringe benefits listed on the wage determination unless the Administrator of the Wage and Hour Division determines that there is an apprenticeship program associated with the corresponding journeyman-level wage rate on the wage determination which provides for less than full fringe benefits for apprentices, in which case such trainees shall receive the same fringe benefits as apprentices.

(4) In the event the Employment and Training Administration withdraws approval of a training program, the contractor or subcontractor will no longer be permitted to utilize trainees at less than the applicable predetermined rate for the work performed until an acceptable program is approved.

**c. Helpers:**

Helpers will be permitted to work on a project if the helper classification is specified and defined on the applicable wage determination or is approved pursuant to the conformance procedure set forth in Section IV.2. Any worker listed on a payroll at a helper wage rate, who is not a helper under a approved definition, shall be paid not less than the applicable wage rate on the wage determination for the classification of work actually performed.

**5. Apprentices and Trainees (Programs of the U.S. DOT):**

Apprentices and trainees working under apprenticeship and skill training programs which have been certified by the Secretary of Transportation as promoting EEO in connection with Federal-aid highway construction programs are not subject to the requirements of paragraph 4 of this Section IV. The straight time hourly wage rates for apprentices and trainees under such programs will be established by the particular programs. The ratio of apprentices and trainees to journeymen shall not be greater than permitted by the terms of the particular program.

**6. Withholding:**

The SHA shall upon its own action or upon written request of an authorized representative of the DOL withhold, or cause to be withheld, from the contractor or subcontractor under this contract or any other Federal contract with the same prime contractor, or any other Federally-assisted contract subject to Davis-Bacon prevailing wage requirements which is held by the same prime contractor, as much of the accrued payments or advances as may be considered necessary to pay laborers and mechanics, including apprentices, trainees, and helpers, employed by the contractor or any subcontractor the full amount of wages required by the contract. In the event of failure to pay any laborer or mechanic, including any apprentice, trainee, or helper, employed or working on the site of the work, all or part of the wages required by the contract, the SHA contracting officer may, after written notice to the contractor, take such action as may be necessary to cause the suspension of any further payment, advance, or guarantee of funds until such violations have ceased.

**7. Overtime Requirements:**

No contractor or subcontractor contracting for any part of the contract work which may require or involve the employment of laborers, mechanics, watchmen, or guards (including apprentices, trainees, and helpers described in paragraphs 4 and 5 above) shall require or permit any laborer, mechanic, watchman, or guard in any workweek in which he/she is employed on such work, to work in excess of 40 hours in such workweek unless such laborer, mechanic, watchman, or guard receives compensation at a rate not less than one-and-one-half times his/her basic rate of pay for all hours worked in excess of 40 hours in such workweek.

**8. Violation:**

**Liability for Unpaid Wages; Liquidated Damages:**  
In the event of any violation of the clause set forth in paragraph 7 above, the contractor and any subcontractor responsible thereof shall be liable to the affected employee for his/her unpaid wages. In addition, such contractor and subcontractor shall be liable to the United States (in the case of work done under contract for the District of Columbia or a territory, to such District or to such territory) for liquidated damages. Such liquidated damages shall be computed with respect to each individual laborer, mechanic, watchman, or guard employed in violation of the clause set forth in paragraph 7, in the sum of \$10 for each calendar day on which such employee was required or permitted to work in excess of the standard work week of 40 hours without payment of the overtime wages required by the clause set forth in paragraph 7.

#### 9. Withholding for Unpaid Wages and Liquidated Damages:

The SHA shall upon its own action or upon written request of any authorized representative of the DOL withhold, or cause to be withheld, from any monies payable on account of work performed by the contractor or subcontractor under any such contract or any other Federal contract with the same prime contractor, or any other Federally-assisted contract subject to the Contract Work Hours and Safety Standards Act, which is held by the same prime contractor, such sums as may be determined to be necessary to satisfy any liabilities of such contractor or subcontractor for unpaid wages and liquidated damages as provided in the clause set forth in paragraph 8 above.

#### V. STATEMENTS AND PAYROLLS

(Applicable to all Federal-aid construction contracts exceeding \$2,000 and to all related subcontracts, except for projects located on roadways classified as local roads or rural collectors, which are exempt.)

##### 1. Compliance with Copeland Regulations (29 CFR 3):

The contractor shall comply with the Copeland Regulations of the Secretary of Labor which are herein incorporated by reference.

##### 2. Payrolls and Payroll Records:

a. Payrolls and basic records relating thereto shall be maintained by the contractor and each subcontractor during the course of the work and preserved for a period of 3 years from the date of completion of the contract for all laborers, mechanics, apprentices, trainees, watchmen, helpers, and guards working at the site of the work.

b. The payroll records shall contain the name, social security number, and address of each such employee; his or her correct classification; hourly rates of wages paid (including rates of contributions or costs anticipated for bona fide fringe benefits or cash equivalent thereof the types described in Section 1(b)(2)(B) of the Davis Bacon Act); daily and weekly number of hours worked; deductions made; and actual wages paid. In addition, for Appalachian contracts, the payroll records shall contain a notation indicating whether the employee does, or does not, normally reside in the labor area as defined in Attachment A, paragraph 1. Whenever the Secretary of Labor, pursuant to Section IV, paragraph 3b, has found that the wages of any laborer or mechanic include the amount of any costs reasonably anticipated in providing benefits under a plan or program described in Section 1(b)(2)(B) of the Davis Bacon Act, the contractor and each subcontractor shall maintain records which show that the commitment to provide such benefits is enforceable, that the plan or program is financially responsible, that the plan or program has been communicated in writing to the laborers or mechanics affected, and show the cost anticipated or the actual cost incurred in providing benefits. Contractors or subcontractors employing apprentices or trainees under approved programs shall maintain written evidence of the registration of apprentices and trainees, and ratios and wage rates prescribed in the applicable programs.

c. Each contractor and subcontractor shall furnish, each week in which any contract work is performed, to the SHA resident engineer a payroll of wages paid each of its employees (including apprentices, trainees, and helpers, described in Section IV, paragraphs 4 and 5, and watchmen and guards engaged on work during the preceding weekly payroll period). The payroll submitted shall set out accurately and completely all of the information required to be maintained under paragraph 2b of this Section V. This information may be submitted in any form

desired. Optional Form WH-347 is available for this purpose and may be purchased from the Superintendent of Documents (Federal stock number 029-005-0014-1), U.S. Government Printing Office, Washington, D.C. 20402. The prime contractor is responsible for the submission of copies of payrolls by all subcontractors.

d. Each payroll submitted shall be accompanied by a "Statement of Compliance," signed by the contractor or subcontractor or his/her agent who pays or supervises the payment of the persons employed under the contract and shall certify the following:

(1) that the payroll for the payroll period contains the information required to be maintained under paragraph 2b of this Section V and that such information is correct and complete;

(2) that such laborer or mechanic (including each helper, apprentice, and trainee) employed on the contract during the payroll period has been paid the full weekly wages earned, without rebate, either directly or indirectly, and that no deductions have been made either directly or indirectly from the full wages earned, other than permissible deductions as set forth in the Regulations, 29 CFR 3;

(3) that each laborer or mechanic has been paid not less than the applicable wage rate and fringe benefits or cash equivalent for the classification of worked performed, as specified in the applicable wage determination incorporated into the contract.

e. The weekly submission of a properly executed certification set forth on the reverse side of Optional Form WH-347 shall satisfy the requirement for submission of the "Statement of Compliance" required by paragraph 2d of this Section V.

f. The falsification of any of the above certifications may subject the contractor to civil or criminal prosecution under 18 U.S.C. 1001 and 31 U.S.C. 231.

g. The contractor or subcontractor shall make the records required under paragraph 2b of this Section V available for inspection, copying, or transcription by authorized representatives of the SHA, the FHWA, or the DOL, and shall permit such representatives to interview employees during working hours on the job. If the contractor or subcontractor fails to submit the required records or to make them available, the SHA, the FHWA, the DOL, or all may, after written notice to the contractor, sponsor, applicant, or owner, take such actions as may be necessary to cause the suspension of any further payment, advance, or guarantee of funds. Furthermore, failure to submit the required records upon request or to make such records available may be grounds for debarment action pursuant to 29 CFR 5.12.

#### VI. RECORD OF MATERIALS, SUPPLIES, AND LABOR

1. On all Federal-aid contracts on the National Highway System, except those which provide solely for the installation of protective devices at railroad grade crossings, those which are constructed on a force account or direct labor basis, highway beautification contracts, and contracts for which the total final construction cost for roadway and bridge is less than \$1,000,000 (23 CFR 635) the contractor shall:

a. Become familiar with the list of specific materials and supplies contained in Form FHWA-47, "Statement of Materials and Labor Used by Contractor of Highway Construction Involving Federal Funds," prior to the commencement of work under this contract.

b. Maintain a record of the total cost of all materials and supplies purchased for and incorporated in the work, and also of

Form FHWA-1273 (Rev. 3-94)



the quantities of those specific materials and supplies listed on Form FHWA-47, and in the units shown on Form FHWA-47.

c. Furnish, upon the completion of the contract, to the SHA resident engineer on Form FHWA-47 together with the data required in paragraph 1b relative to materials and supplies, a final labor summary of all contract work indicating the total hours worked and the total amount earned.

2. At the prime contractor's option, either a single report covering all contract work or separate reports for the contractor and for each subcontract shall be submitted.

#### VII. SUBLETTING OR ASSIGNING THE CONTRACT

1. The contractor shall perform with its own organization contract work amounting to not less than 30 percent (or a greater percentage if specified elsewhere in the contract) of the total original contract price, excluding any specialty items designated by the State. Specialty items may be performed by subcontract and the amount of any such specialty items performed may be deducted from the total original contract price before computing the amount of work required to be performed by the contractor's own organization (23 CFR 635).

a. "Its own organization" shall be construed to include only workers employed and paid directly by the prime contractor and equipment owned or rented by the prime contractor, with or without operators. Such term does not include employees or equipment of a subcontractor, assignee, or agent of the prime contractor.

b. "Specialty Items" shall be construed to be limited to work that requires highly specialized knowledge, abilities, or equipment not ordinarily available in the type of contracting organizations qualified and expected to bid on the contract as a whole and in general are to be limited to minor components of the overall contract.

2. The contract amount upon which the requirements set forth in paragraph 1 of Section VII is computed includes the cost of material and manufactured products which are to be purchased or produced by the contractor under the contract provisions.

3. The contractor shall furnish (a) a competent superintendent or supervisor who is employed by the firm, has full authority to direct performance of the work in accordance with the contract requirements, and is in charge of all construction operations (regardless of who performs the work) and (b) such other of its own organizational resources (supervision, management, and engineering services) as the SHA contracting officer determines is necessary to assure the performance of the contract.

4. No portion of the contract shall be sublet, assigned or otherwise disposed of except with the written consent of the SHA contracting officer, or authorized representative, and such consent when given shall not be construed to relieve the contractor of any responsibility for the fulfillment of the contract. Written consent will be given only after the SHA has assured that each subcontract is evidenced in writing and that it contains all pertinent provisions and requirements of the prime contract.

#### VIII. SAFETY: ACCIDENT PREVENTION

1. In the performance of this contract the contractor shall comply with all applicable Federal, State, and local laws governing safety, health, and sanitation (23 CFR 635). The contractor shall provide all safeguards, safety devices and protective equipment and take any other needed actions as it determines, or as the SHA contracting officer may determine, to be reasonably necessary to protect the life and health of employees

on the job and the safety of the public and to protect property in connection with the performance of the work covered by the contract.

2. It is a condition of this contract, and shall be made a condition of each subcontract, which the contractor enters into pursuant to this contract, that the contractor and any subcontractor shall not permit any employee, in performance of the contract, to work in surroundings or under conditions which are unsanitary, hazardous or dangerous to his/her health or safety, as determined under construction safety and health standards (29 CFR 1926) promulgated by the Secretary of Labor, in accordance with Section 107 of the Contract Work Hours and Safety Standards Act (40 U.S.C. 333).

3. Pursuant to 29 CFR 1926.3, it is a condition of this contract that the Secretary of Labor or authorized representative thereof, shall have right of entry to any site of contract performance to inspect or investigate the matter of compliance with the construction safety and health standards and to carry out the duties of the Secretary under Section 107 of the Contract Work Hours and Safety Standards Act (40 U.S.C. 333).

#### IX. FALSE STATEMENTS CONCERNING HIGHWAY PROJECTS

In order to assure high quality and durable construction in conformity with approved plans and specifications and a high degree of reliability on statements and representations made by engineers, contractors, suppliers, and workers on Federal-aid highway projects, it is essential that all persons concerned with the project perform their functions as carefully, thoroughly, and honestly as possible. Willful falsification, distortion, or misrepresentation with respect to any facts related to the project is a violation of Federal law. To prevent any misunderstanding regarding the seriousness of these and similar acts, the following notice shall be posted on each Federal-aid highway project (23 CFR 635) in one or more places where it is readily available to all persons concerned with the project:

#### NOTICE TO ALL PERSONNEL ENGAGED ON FEDERAL-AID HIGHWAY PROJECTS

18 U.S.C. 1020 reads as follows:

*"Whoever, being an officer, agent, or employee of the United States, or of any State or Territory, or whoever, whether a person, association, firm, or corporation, knowingly makes any false statement, false representation, or false report as to the character, quality, quantity, or cost of the material used or to be used, or the quantity or quality of the work performed or to be performed, or the cost thereof in connection with the submission of plans, maps, specifications, contracts, or costs of construction on any highway or related project submitted for approval to the Secretary of Transportation; or*

*Whoever knowingly makes any false statement, false representation, false report or false claim with respect to the character, quality, quantity, or cost of any work performed or to be performed, or materials furnished or to be furnished, in connection with the construction of any highway or related project approved by the Secretary of Transportation; or*

*Whoever knowingly makes any false statement or false representation as to material fact in any statement, certificate, or report submitted pursuant to provisions of the Federal-aid Roads Act approved July 1, 1916, (39 Stat. 355), as amended and supplemented;*

*Shall be fined not more than \$10,000 or imprisoned not more than 5 years or both."*

**X. IMPLEMENTATION OF CLEAN AIR ACT AND FEDERAL WATER POLLUTION CONTROL ACT**

(Applicable to all Federal-aid construction contracts and to all related subcontracts of \$100,000 or more.)

By submission of this bid or the execution of this contract, or subcontract, as appropriate, the bidder, Federal-aid construction contractor, or subcontractor, as appropriate, will be deemed to have stipulated as follows:

1. That any facility that is or will be utilized in the performance of this contract, unless such contract is exempt under the Clean Air Act, as amended (42 U.S.C. 1857 *et seq.*, as amended by Pub.L. 91-604), and under the Federal Water Pollution Control Act, as amended (33 U.S.C. 1251 *et seq.*, as amended by Pub.L. 92-500), Executive Order 11738, and regulations in implementation thereof (40 CFR 15) is not listed, on the date of contract award, on the U.S. Environmental Protection Agency (EPA) List of Violating Facilities pursuant to 40 CFR 15.20.

2. That the firm agrees to comply and remain in compliance with all the requirements of Section 114 of the Clean Air Act and Section 308 of the Federal Water Pollution Control Act and all regulations and guidelines listed thereunder.

3. That the firm shall promptly notify the SHA of the receipt of any communication from the Director, Office of Federal Activities, EPA, indicating that a facility that is or will be utilized for the contract is under consideration to be listed on the EPA List of Violating Facilities.

4. That the firm agrees to include or cause to be included the requirements of paragraph 1 through 4 of this Section X in every nonexempt subcontract, and further agrees to take such action as the government may direct as a means of enforcing such requirements.

**XI. CERTIFICATION REGARDING DEBARMENT, SUSPENSION, INELIGIBILITY AND VOLUNTARY EXCLUSION****1. Instructions for Certification - Primary Covered Transactions:**

(Applicable to all Federal-aid contracts - 49 CFR 29)

a. By signing and submitting this proposal, the prospective primary participant is providing the certification set out below.

b. The inability of a person to provide the certification set out below will not necessarily result in denial of participation in this covered transaction. The prospective participant shall submit an explanation of why it cannot provide the certification set out below. The certification or explanation will be considered in connection with the department or agency's determination whether to enter into this transaction. However, failure of the prospective primary participant to furnish a certification or an explanation shall disqualify such a person from participation in this transaction.

c. The certification in this clause is a material representation of fact upon which reliance was placed when the department or agency determined to enter into this transaction. If it is later determined that the prospective primary participant know-

ingly rendered an erroneous certification, in addition to other remedies available to the Federal Government, the department or agency may terminate this transaction for cause of default.

d. The prospective primary participant shall provide immediate written notice to the department or agency to whom this proposal is submitted if any time the prospective primary participant learns that its certification was erroneous when submitted or has become erroneous by reason of changed circumstances.

e. The terms "covered transaction," "debarred," "suspended," "ineligible," "lower tier covered transaction," "participant," "person," "primary covered transaction," "principal," "proposal," and "voluntarily excluded," as used in this clause, have the meanings set out in the Definitions and Coverage sections of rules implementing Executive Order 12549. You may contact the department or agency to which this proposal is submitted for assistance in obtaining a copy of those regulations.

f. The prospective primary participant agrees by submitting this proposal that, should the proposed covered transaction be entered into, it shall not knowingly enter into any lower tier covered transaction with a person who is debarred, suspended, declared ineligible, or voluntarily excluded from participation in this covered transaction, unless authorized by the department or agency entering into this transaction.

g. The prospective primary participant further agrees by submitting this proposal that it will include the clause titled "Certification Regarding Debarment, Suspension, Ineligibility and Voluntary Exclusion-Lower Tier Covered Transaction," provided by the department or agency entering into this covered transaction, without modification, in all lower tier covered transactions and in all solicitations for lower tier covered transactions.

h. A participant in a covered transaction may rely upon a certification of a prospective participant in a lower tier covered transaction that is not debarred, suspended, ineligible, or voluntarily excluded from the covered transaction, unless it knows that the certification is erroneous. A participant may decide the method and frequency by which it determines the eligibility of its principals. Each participant may, but is not required to, check the nonprocurement portion of the "Lists of Parties Excluded From Federal Procurement or Nonprocurement Programs" (Nonprocurement List) which is compiled by the General Services Administration.

i. Nothing contained in the foregoing shall be construed to require establishment of a system of records in order to render in good faith the certification required by this clause. The knowledge and information of participant is not required to exceed that which is normally possessed by a prudent person in the ordinary course of business dealings.

j. Except for transactions authorized under paragraph f of these instructions, if a participant in a covered transaction knowingly enters into a lower tier covered transaction with a person who is suspended, debarred, ineligible, or voluntarily excluded from participation in this transaction, in addition to other remedies available to the Federal Government, the department or agency may terminate this transaction for cause or default.

\*\*\*\*\*

**Certification Regarding Debarment, Suspension, Ineligibility and Voluntary Exclusion--Primary Covered Transactions**

1. The prospective primary participant certifies to the best of its knowledge and belief, that it and its principals:

- a. Are not presently debarred, suspended, proposed for debarment, declared ineligible, or voluntarily excluded from covered transactions by any Federal department or agency;
- b. Have not within a 3-year period preceding this proposal been convicted of or had a civil judgement rendered against them for commission of fraud or a criminal offense in connection with obtaining, attempting to obtain, or performing a public (Federal, State or local) transaction or contract under a public transaction; violation of Federal or State antitrust statutes or commission of embezzlement, theft, forgery, bribery, falsification or destruction of records, making false statements, or receiving stolen property;
- c. Are not presently indicted for or otherwise criminally or civilly charged by a governmental entity (Federal, State or local) with commission of any of the offenses enumerated in paragraph 1b of this certification; and
- d. Have not within a 3-year period preceding this application/proposal had one or more public transactions (Federal, State or local) terminated for cause or default.

2. Where the prospective primary participant is unable to certify to any of the statements in this certification, such prospective participant shall attach an explanation to this proposal.

\*\*\*\*\*

## 2. Instructions for Certification - Lower Tier Covered Transactions:

(Applicable to all subcontracts, purchase orders and other lower tier transactions of \$25,000 or more - 49 CFR 29)

- a. By signing and submitting this proposal, the prospective lower tier is providing the certification set out below.
- b. The certification in this clause is a material representation of fact upon which reliance was placed when this transaction was entered into. If it is later determined that the prospective lower tier participant knowingly rendered an erroneous certification, in addition to other remedies available to the Federal Government, the department, or agency with which this transaction originated may pursue available remedies, including suspension and/or debarment.
- c. The prospective lower tier participant shall provide immediate written notice to the person to which this proposal is submitted if at any time the prospective lower tier participant learns that its certification was erroneous by reason of changed circumstances.
- d. The terms "covered transaction," "debarred," "suspended," "ineligible," "primary covered transaction," "participant," "person," "principal," "proposal," and "voluntarily excluded," as used in this clause, have the meanings set out in the Definitions and Coverage sections of rules implementing Executive Order 12549. You may contact the person to which this proposal is submitted for assistance in obtaining a copy of those regulations.
- e. The prospective lower tier participant agrees by submitting this proposal that, should the proposed covered transaction be entered into, it shall not knowingly enter into any lower tier covered transaction with a person who is debarred, suspended, declared ineligible, or voluntarily excluded from participation in this covered transaction, unless authorized by the department or agency with which this transaction originated.

f. The prospective lower tier participant further agrees by submitting this proposal that it will include this clause titled "Certification Regarding Debarment, Suspension, Ineligibility and Voluntary Exclusion-Lower Tier Covered Transaction," without modification, in all lower tier covered transactions and in all solicitations for lower tier covered transactions.

g. A participant in a covered transaction may rely upon a certification of a prospective participant in a lower tier covered transaction that is not debarred, suspended, ineligible, or voluntarily excluded from the covered transaction, unless it knows that the certification is erroneous. A participant may decide the method and frequency by which it determines the eligibility of its principals. Each participant may, but is not required to, check the Nonprocurement List.

h. Nothing contained in the foregoing shall be construed to require establishment of a system of records in order to render in good faith the certification required by this clause. The knowledge and information of participant is not required to exceed that which is normally possessed by a prudent person in the ordinary course of business dealings.

i. Except for transactions authorized under paragraph e of these instructions, if a participant in a covered transaction knowingly enters into a lower tier covered transaction with a person who is suspended, debarred, ineligible, or voluntarily excluded from participation in this transaction, in addition to other remedies available to the Federal Government, the department or agency with which this transaction originated may pursue available remedies, including suspension and/or debarment.

\*\*\*\*\*

## Certification Regarding Debarment, Suspension, Ineligibility and Voluntary Exclusion--Lower Tier Covered Transactions:

- 1. The prospective lower tier participant certifies, by submission of this proposal, that neither it nor its principals is presently debarred, suspended, proposed for debarment, declared ineligible, or voluntarily excluded from participation in this transaction by any Federal department or agency.
- 2. Where the prospective lower tier participant is unable to certify to any of the statements in this certification, such prospective participant shall attach an explanation to this proposal.

\*\*\*\*\*

## XII. CERTIFICATION REGARDING USE OF CONTRACT FUNDS FOR LOBBYING

(Applicable to all Federal-aid construction contracts and to all related subcontracts which exceed \$100,000 - 49 CFR 20)

- 1. The prospective participant certifies, by signing and submitting this bid or proposal, to the best of his or her knowledge and belief, that:
  - a. No Federal appropriated funds have been paid or will be paid, by or on behalf of the undersigned, to any person for influencing or attempting to influence an officer or employee of any Federal agency, a Member of Congress, an officer or employee of Congress, or an employee of a Member of Congress in connection with the awarding of any Federal contract, the making of any Federal grant, the making of any Federal loan, the entering into of any cooperative agreement, and the extension, continuation, renewal, amendment, or modification of any Federal contract, grant, loan, or cooperative agreement.

b. If any funds other than Federal appropriated funds have been paid or will be paid to any person for influencing or attempting to influence an officer or employee of any Federal agency, a Member of Congress, an officer or employee of Congress, or an employee of a Member of Congress in connection with this Federal contract, grant, loan, or cooperative agreement, the undersigned shall complete and submit Standard Form-LLL, "Disclosure Form to Report Lobbying," in accordance with its instructions.

2. This certification is a material representation of fact upon which reliance was placed when this transaction was made or entered into. Submission of this certification is a prerequisite for making or entering into this transaction imposed by 31 U.S.C. 1352. Any person who fails to file the required certification shall be subject to a civil penalty of not less than \$10,000 and not more than \$100,000 for each such failure.

3. The prospective participant also agrees by submitting his or her bid or proposal that he or she shall require that the language of this certification be included in all lower tier subcontracts, which exceed \$100,000 and that all such recipients shall certify and disclose accordingly.

**NOTICE OF REQUIREMENT FOR AFFIRMATIVE  
ACTION TO ENSURE EQUAL EMPLOYMENT  
OPPORTUNITY  
(EXECUTIVE ORDER 11246)**

1. The Offeror's or Bidder's attention is called to the "Equal Opportunity Clause" and the "Standard Federal Equal Employment Specifications" set forth herein.
2. The goals and timetables for minority and female participation, expressed in percentage terms for the Contractor's aggregate work force in each trade on all construction work in the covered area are as follows:

**GOALS FOR MINORITY PARTICIPATION IN EACH TRADE**

<b>Economic Area</b>	<b>Goal %</b>	<b>Economic Area</b>	<b>Goal %</b>
103 Sioux City, IA:		Non-SMSA Counties . . . . .	5.3
SMSA Counties:		IA Adams, IA Audubon, IA Cass,	
7720 Sioux City, IA-NE . . . . .	1.9	IA Fremont, IA Harrison, IA Mills,	
IA Woodbury, NE Dakota		IA Montgomery, IA Page, IA Shelby,	
Non-SMSA Counties . . . . .	1.2	IA Taylor, NE Burt, NE Cass, NE Colfax,	
IA Cherokee, IA Crawford, IA Ida,		NE Dodge, NE Platte, NE Saunders,	
IA Monona, IA O'Brien, IA Plymouth,		NE Washington	
IA Sioux, NE Antelope, NE Cedar,		144 Grand Island, NE:	
NE Cuming, NE Dixon, NE Knox,		Non-SMSA Counties . . . . .	1.4
NE Madison, NE Pierce, NE Stanton,		NE Adams, NE Arthur, NE Blaine,	
NE Thurston, NE Wayne, SD BonHomme,		NE Boone, NE Boyd, NE Brown,	
SD Clay, SD Union, SD Yankton		NE Buffalo, NE Chase, NE Cherry,	
142 Lincoln, NE:		NE Clay, NE Custer, NE Dawson,	
SMSA Counties:		NE Dundy, NE Franklin, NE Frontier,	
4360 Lincoln, NE . . . . .	2.8	NE Furnas, NE Garfield, NE Gosper,	
NE Lancaster		NE Grant, NE Greeley, NE Hall, NE	
Non-SMSA Counties . . . . .	1.9	Hamilton, NE Harlan, NE Hayes,	
NE Butler, NE Fillmore, NE Gage,		NE Hitchcock, NE Holt, NE Hooker,	
NE Jefferson, NE Johnson, NE Nemaha,		NE Howard, NE Kearney, NE Keith,	
NE Otoe, NE Pawnee, NE Polk, NE		NE Keya Paha, NE Lincoln, NE Logan,	
Richardson, NE Saline, NE Seward,		NE Loup, NE McPherson, NE Merrick,	
NE Thayer, NE York		NE Nance, NE Nuckolls, NE Perkins,	
143 Omaha, NE:		NE Phelps, NE Red Willow, NE Rock,	
SMSA Counties:		NE Sherman, NE Thomas, NE Valley,	
5920 Omaha, NE-IA . . . . .	7.6	NE Webster, NE Wheeler	
IA Pottawattamie, NE Douglas,		145 Scottsbluff, NE:	
NE Sarpy		Non-SMSA Counties . . . . .	5.3
		NE Banner, NE Box Butte, NE Chey-	
		enne, NE Dawes, NE Deuel, NE	
		Garden, NE Kimball, NE Morrill,	
		NE Scotts Bluff, NE Sheridan, NE	
		Sioux, WY Goshen	

**GOALS AND TIMETABLES FOR FEMALE PARTICIPATION IN EACH TRADE**

<b>Timetables</b>	<b>Goals (Percent)</b>
From April 1, 1980 until further notice	6.9

These goals are applicable to all the Contractor's construction work (whether or not it is Federal or federally assisted) performed in the covered area. If the contractor performs construction work in a geographical area located outside of the covered area, it shall apply the goals established for such geographical area where the work is actually performed. With regard to this second area, the contractor also is subject to the goals for both its federally involved and nonfederally involved construction.

The Contractor's compliance with the Executive Order and the regulations in 41 CFR Part 60-4 shall be based on its implementation of the Equal Opportunity Clause, specific affirmative action obligations required by the specifications set forth in 41 CFR 60-4.3(a), and its efforts to meet the goals. The hours of minority and female employment and training must be substantially uniform throughout the length of the contract, and in each trade, and the contractor shall make a good faith effort to employ minorities and women evenly on each of its projects. The transfer of minority or female employees or trainees from Contractor to Contractor or from project to project for the sole purpose of meeting the Contractor's goals shall be a violation of the contract, the Executive Order and the regulations in 41 CFR Part 60-4. Compliance with the goals will be measured against the total work hours performed.

3. The Contractor shall provide written notification to the Director of the Office of Federal Contract Compliance Programs within 10 working days of award of any construction subcontract in excess of \$10,000 at any tier for construction work under the contract resulting from this solicitation. The notification shall list the name, address and telephone number of the subcontractor; employer identification number of the subcontractor; estimated dollar amount of the subcontract; estimated starting and completion dates of the subcontract; and the geographical area in which the subcontract is to be performed.
4. As used in this Notice, and in the contract resulting from this solicitation, the "covered area" is by county.

November 3, 1980

**STANDARD FEDERAL EQUAL EMPLOYMENT OPPORTUNITY  
CONSTRUCTION CONTRACT SPECIFICATIONS  
(EXECUTIVE ORDER 11246)**

1. As used in these specifications:
  - a. "Covered area" means the geographical area described in the solicitation from which this contract resulted;
  - b. "Director" means Director, Office of Federal Contract Compliance Programs, United States Department of Labor, or any person to whom the Director delegates authority;
  - c. "Employer Identification Number" means the Federal Social Security number used on the Employer's Quarterly Federal Tax Return, U.S. Treasury Department Form 941.
  - d. "Minority" includes:
    - (i) Black (all persons having origins in any of the Black African racial groups not of Hispanic origin);
    - (ii) Hispanic (all persons of Mexican, Puerto Rican, Cuban, Central or South American or other Spanish Culture or origin, regardless of race);
    - (iii) Asian and Pacific Islander (all persons having origins in any of the original peoples of the Far East, Southeast Asia, the Indian Subcontinent, or the Pacific Islands); and
    - (iv) American Indian or Alaskan Native (all persons having origins in any of the original peoples of North America and maintaining identifiable tribal affiliations through membership and participation or community identification).
2. Whenever the Contractor, or any Subcontractor at any tier, subcontracts a portion of the work involving any construction trade, it shall physically include in each subcontract in excess of \$10,000 the provisions of these specifications and the Notice, which contains the applicable goals for minority and female participation and which is set forth in the solicitations from which this contract resulted.
3. If the Contractor is participating (pursuant to 41 CFR 60-4.5) in a Hometown Plan approved by the U.S. Department of Labor in the covered area either individually or through an association, its affirmative action obligations on all work in the Plan area (including goals and timetables) shall be in accordance with that Plan for those trades which have unions participating in the Plan. Contractors must be able to demonstrate their participation in and compliance with the provisions of any such Hometown Plan. Each Contractor or Subcontractor participating in an approved Plan is individually required to comply with its obligations under the EEO clause, and to make a good faith effort to achieve each goal under the Plan in each trade in which it has employees. The overall good faith performance by other Contractors or Subcontractors toward a goal in an approved Plan does not excuse any covered Contractor's or Subcontractor's failure to take good faith efforts to achieve the Plan goals and timetables.
4. The Contractor shall implement the specific affirmative action standards provided in paragraphs 7a through p of these specifications. The goals set forth in the solicitation from which this contract resulted are expressed as percentages of the total hours of employment and training of minority and female utilization the Contractor should reasonably be able to achieve in each construction trade in which it has employees in the covered area. Covered Construction contractors performing construction work in geographical areas where they do not have a Federal or federally assisted construction contract shall apply the minority and female goals established for the geographical area where the work is being performed. Goals are published periodically in the **Federal Register** in notice form, and such notices may be obtained from any Office of Federal Contract Compliance Programs office or from Federal procurement contracting officers. The Contractor is expected to make substantially uniform progress in meeting its goals in each craft during the period specified.
5. Neither the provisions of any collective bargaining agreement, nor the failure by a union with whom the Contractor has a collective bargaining agreement, to refer either minorities or women shall excuse the Contractor's obligations under these specifications, Executive Order 11246, or the regulations promulgated pursuant thereto.
6. In order for the nonworking training hours of apprentices and trainees to be counted in meeting the goals, such apprentices and trainees must be employed by the Contractor during the training period, and the Contractor must have made a commitment to employ the apprentices and trainees at the completion of their training, subject to the availability of employment opportunities. Trainees must be trained pursuant to training programs approved by the U.S. Department of Labor.

7. The Contractor shall take specific affirmative actions to ensure equal employment opportunity. The evaluation of the Contractor's compliance with these specifications shall be based upon its effort to achieve maximum results from its action. The Contractor shall document these efforts fully and shall implement affirmative action steps at least as extensive as the following:
  - a. Ensure and maintain a working environment free of harassment, intimidation, and coercion at all sites, and in all facilities at which the Contractor's employees are assigned to work. The Contractor, where possible, will assign two or more women to each construction project. The Contractor shall specifically ensure that all foremen, superintendents, and other on-site supervisory personnel are aware of and carry out the Contractor's obligation to maintain such a working environment, with specific attention to minority or female individuals working at such sites or in such facilities.
  - b. Establish and maintain a current list of minority and female recruitment sources, provide written notification to minority and female recruitment sources and to community organizations when the Contractor or its unions have employment opportunities available, and maintain a record of the organizations' responses.
  - c. Maintain a current file of the names, addresses and telephone numbers of each minority and female off-the-street applicant and minority or female referral from a union, a recruitment source or community organization and of what action was taken with respect to each such individual. If such individual was sent to the union hiring hall for referral and was not referred back to the Contractor by the union or, if referred, not employed by the Contractor, this shall be documented in the file with the reason therefor, along with whatever additional actions the Contractor may have taken.
  - d. Provide immediate written notification to the Director when the union or unions with which the Contractor has a collective bargaining agreement has not referred to the Contractor a minority person or woman sent by the Contractor, or when the Contractor has other information that the union referral process has impeded the Contractor's efforts to meet its obligations.
  - e. Develop on-the-job training opportunities and/or participate in training programs for the area which expressly include minorities and women, including upgrading programs and apprenticeship and trainee programs relevant to the Contractor's employment needs, especially those programs funded or approved by the Department of Labor. The Contractor shall provide notice of these programs to the sources compiled under 7b above.
  - f. Disseminate the Contractor's EEO policy by providing notice of the policy to unions and training programs and requesting their cooperation in assisting the Contractor in meeting its EEO obligations; by including it in any policy manual and collective bargaining agreement; by publicizing it in the company newspaper, annual report, etc.; by specific review of the policy with all management personnel and with all minority and female employees at least once a year; and by posting the company EEO policy on bulletin boards accessible to all employees at each location where construction work is performed.
  - g. Review, at least annually, the company's EEO policy and affirmative action obligations under these specifications with all employees having any responsibility for hiring, assignment, layoff, termination or other employment decisions including specific review of these items with on-site supervisory personnel such as Superintendents, General Foremen, etc., prior to the initiation of construction work at any job site. A written record shall be made and maintained identifying the time and place of these meetings, persons attending, subject matter discussed, and disposition of the subject matter.
  - h. Disseminate the Contractor's EEO policy externally by including it in any advertising in the news media, specifically including minority and female news media, and providing written notification to and discussing the Contractor's EEO policy with other Contractors and Subcontractors with whom the Contractor does or anticipates doing business.

Direct its recruitment efforts, both oral and written, to minority, female and community organizations, to schools with minority and female students and to minority and female recruitment and training organizations serving the Contractor's recruitment area and employment needs. Not later than one month prior to the date for the acceptance of applications for apprenticeship or other training by any recruitment source, the Contractor shall send written notification to organizations such as the above, describing the openings, screening procedures, and tests to be used in the selection process.

Encourage present minority and female employees to recruit other minority persons and women and, where reasonable, provide after school, summer and vacation employment to minority and female youth both on the site and in other areas of a Contractor's work force.

- k. Validate all tests and other selection requirements where there is an obligation to do so under 41 CFR Part 60-3.  
Conduct, at least annually, an inventory and evaluation at least of all minority and female personnel for promotional opportunities and encourage these employees to seek or to prepare for, through appropriate training, etc., such opportunities.
  - m. Ensure that seniority practices, job classifications, work assignments and other personnel practices, do not have a discriminatory effect by continually monitoring all personnel and employment related activities to ensure that the EEO policy and the Contractor's obligations under these specifications are being carried out.
  - n. Ensure that all facilities and company activities are nonsegregated except that separate or single-user toilet and necessary changing facilities shall be provided to assure privacy between the sexes.
  - o. Document and maintain a record of all solicitations of offers for subcontracts from minority and female construction contractors and suppliers, including circulation of solicitations to minority and female contractor associations and other business associations.
  - p. Conduct a review, at least annually, of all supervisors' adherence to and performance under the Contractor's EEO policies and affirmative action obligations.
8. Contractors are encouraged to participate in voluntary associations which assist in fulfilling one or more of their affirmative action obligations (7a through p). The efforts of a contractor association, joint contractor-union, contractor-community, or other similar group of which the contractor is a member and participant, may be asserted as fulfilling any one or more of its obligations under 7a through p of these Specifications provided that the contractor actively participates in the group, makes every effort to assure that the group has a positive impact on the employment of minorities and women in the industry, ensures that the concrete benefits of the program are reflected in the Contractor's minority and female work force participation, makes a good faith effort to meet its individual goals and timetables, and can provide access to documentation which demonstrates the effectiveness of actions taken on behalf of the Contractor. The obligation to comply, however, is the Contractor's and failure of such a group to fulfill an obligation shall not be a defense for the Contractor's noncompliance.
  9. A single goal for minorities and a separate single goal for women have been established. The Contractor, however, is required to provide equal employment opportunity and to take affirmative action for all minority groups, both male and female, and all women, both minority and non-minority. Consequently, the Contractor may be in violation of the Executive Order if a particular group is employed in a substantially disparate manner (for example, even though the Contractor has achieved its goals for women generally, the Contractor may be in violation of the Executive Order if a specific minority group of women is underutilized).
  10. The Contractor shall not use the goals and timetables or affirmative action standards to discriminate against any person because of race, color, religion, sex, or national origin.  
The contractor shall not enter into any Subcontract with any person or firm debarred from Government contracts pursuant to Executive Order 11246.
  12. The Contractor shall carry out such sanctions and penalties for violation of these specifications and of the Equal Opportunity Clause, including suspension, termination and cancellation of existing subcontracts as may be imposed or ordered pursuant to Executive Order 11246, as amended, and its implementing regulations, by the Office of Federal Contract Compliance Programs. Any Contractor who fails to carry out such sanctions and penalties shall be in violation of these specifications and Executive Order 11246, as amended.
  13. The Contractor, in fulfilling its obligations under these specifications, shall implement specific affirmative action steps, at least as extensive as those standards prescribed in paragraph 7 of these specifications, so as to achieve maximum results from its efforts to ensure equal employment opportunity. If the Contractor fails to comply with the requirements of the Executive Order, the implementing regulations, or these specifications, the Director shall proceed in accordance with 41 CFR 60-4.8.
  14. The Contractor shall designate a responsible official to monitor all employment related activity to ensure that the company EEO policy is being carried out, to submit reports relating to the provisions hereof as may be required by the Government and to keep records. Records shall at least include for each employee the name, address, telephone numbers, construction trade, union affiliation if any, employee identification number when assigned, social security number, race, sex, status (e.g., mechanic, apprentice, trainee, helper, or laborer), dates of changes in status, hours worked per week in the indicated trade, rate of pay, and locations at which the



work was performed. Records shall be maintained in an easily understandable and retrievable form; however, to the degree that existing records satisfy this requirement, contractors shall not be required to maintain separate records.

15. Nothing herein provided shall be construed as a limitation upon the application of other laws which establish different standards of compliance or upon the application of requirements for the hiring of local or other area residents (e.g., those under the Public Works Employment Act of 1977 and the Community Development Block Grant Program).

#### **Supplemental Reporting Requirements**

- A. The contractor will keep such records as are necessary to determine compliance with the contractor's equal employment opportunity obligations. The records kept by the contractor will be designed to indicate the number of minority and non-minority group members and women employed in each work classification on the project.
- B. All such records must be retained for a period of three years following completion of the contract work and shall be available at reasonable times and places for inspection by authorized representatives of the State Highway agency and the Federal Highway Administration.
- C. The Contractor and each covered subcontractor will submit to the State Highway agency, for the month of July, for the duration of the project, a report (Form PR-1391) "Federal-aid Highway Construction Contractors Annual EEO Report), indicating the number of minority, women, and non-minority group employees currently engaged in each work classification required by the contract work. If on-the-job training is being required by "Standard Federal Equal Employment Opportunity Specifications" the contractor will be required to furnish (Form FHWA 1409) "Federal-aid Highway Construction Contractor's Semi-Annual Training Report".

#### **Equal Employment Opportunity Policy**

The contractor will accept as his operating policy the following statement which is designed to further the provision of equal employment opportunity to all persons without regard to their race, color, religion, sex, or national origin, and to promote the full realization of equal employment opportunity through a positive continuing program:

It is the policy of this Company to assure that applicants are employed, and that employees are treated during employment, without regard to their race, religion, sex, color, or national origin. Such action shall include: employment, upgrading, demotion, or transfer; recruitment or recruitment advertising; layoff or termination; rates of pay or other forms of compensation; and selection for training, including apprenticeship, preapprenticeship, and/or on-the-job training.

GENERAL DECISION **NE020001** 03/08/02 NE1  
General Decision Number **NE020001**

Superseded General Decision No. NE010001

State: Nebraska

Construction Type:

HEAVY  
HIGHWAY

County(ies):

DOUGLAS                      SAUNDERS  
SARPY                         WASHINGTON

HEAVY CONSTRUCTION PROJECTS (does not include water well drilling); HIGHWAY CONSTRUCTION PROJECTS (excluding tunnels, building structures in rest area projects, and railroad construction; bascule, suspension & spandrel arch bridges; bridges designed for commercial navigation; bridges involving marine construction; other major bridges)

SAUNDERS COUNTY (EAST OF HWY. #109 EXTENDED NORTH AND SOUTH TO THE COUNTY LINE)

Modification Number	Publication Date
0	03/01/2002
1	03/08/2002

COUNTY(ies):

DOUGLAS                      SAUNDERS  
SARPY                         WASHINGTON

CARP0444B 10/01/2001

	Rates	Fringes
CARPENTER; PILEDRIVER	18.85	6.39

ELEC0022B 06/01/2001

	Rates	Fringes
DOUGLAS AND SARPY COUNTIES; SAUNDERS COUNTY (east of Hwy. #109 and north of U.S. Alternate Highway No. 30 (Route 92)); AND WASHINGTON COUNTY:		

ELECTRICIAN	24.25	3.75% + 7.57
-------------	-------	--------------

ELEC0265A 06/01/2001

	Rates	Fringes
SAUNDERS COUNTY (east of Hwy. #109 and south of U.S. Alternate Hwy. No. 30 (Route 92)):		

ELECTRICIAN:

Zone 1	19.97	4.5% + 5.64
Zone 2	20.27	4.5% + 5.64
Zone 3	20.57	4.5% + 5.64
Zone 4	20.97	4.5% + 5.64

FOOTNOTE:

Work on scaffolds, hanging scaffolds, boatswains chairs or ladders, etc., in any area where the worker is in a position to fall 40 ft. or more, or where objects above the worker can fall 40 ft. or more: to be paid one and one-half times the straight-time rate of pay.

## ZONE DEFINITIONS:

Zone 1: 0 to 35 miles from the main Post Office in Lincoln, NE  
 Zone 2: 36 to 50 miles from the main Post Office in Lincoln, NE  
 Zone 3: 51 to 75 miles from the main Post Office in Lincoln, NE  
 Zone 4: 76 miles and over from the main Post Office in Lincoln, NE

ELEC1525A 01/01/2002

	Rates	Fringes
LINE CONSTRUCTION:		
LINE TECHNICIANS:		
Line technician	22.87	27.75%+2.45
Cable splicer; Line welder	24.59	27.75%+2.45
Line equipment operator	20.53	27.75%+2.45
Truck driver	16.42	27.75%+2.45
Ground person	14.80	27.75%+2.45

ELEC1525C 09/01/2000

	Rates	Fringes
TRAFFIC SIGNAL, STREET LIGHT AND UNDERGROUND WORK:		
Line technician	21.99	27.75%+2.00
Cable splicer; Line welder	23.64	27.75%+2.00
Equipment operator	19.74	27.75%+2.00
Truck driver	15.79	27.75%+2.00
Ground person	14.23	27.75%+2.00

ENGI0571C 04/01/2001

	Rates	Fringes
POWER EQUIPMENT OPERATORS:		
Oiler, greaser, air compressor, welding machine, pump, roller, forklift, hydrohammer, pug mill, concrete pump, cure and tyne machine, rubber-tired farm tractor	14.04	3.85
Off-road heavy hauler, Rough Roller dozer, rough blade, Ferguson-type tractors (Workbull with high tecco), asphalt roller	17.71	3.85
One and two drum hoists, tugger, trencher, concrete spreader & finishing machine, dozer loader, spread oiler, bantam-type tamper, rubber-tired tractor backhoe, oil distributor-finish roller dozer	19.26	3.85
Trimmer, crane, backhoe, mechanic,		

slip form paver, asphalt plant- concrete plant, laydown machine, concrete pump truck, finish blade, scraper	19.98	3.85
--	-------	------

## FOOTNOTES:

Operation of an articulating, Pitman type boom truck with single axle truck and lift capacity of less than 5,000 lbs., used to put construction materials in place: 90% of the group 2 rate.

When two (2) scraper units or two push cat units capable of operating separately are hooked together in tandem for single operation, the operator shall receive twenty-five cents (\$0.25) over the classification worked.

When air compressors are used for operating the hammer when pulling or driving pile and the compressor operator is required to operate the air valve for such hammer, such compressor operator shall receive the top wage rate.

Operators working in tunnels and caverns under compressed or free air shall receive forty cents (\$0.40) above their classification.

Hazardous waste removal work requiring the wearing of personal protective equipment and/or suits, to be paid as follows:

Class A: \$3.00 additional per hour
Class B: 2.00 additional per hour
Class C: 1.00 additional per hour
Class D: no premium pay.

---

IRON0021C 06/01/2000		
	Rates	Fringes
IRONWORKER	20.01	5.91

---

LABO1140D 01/01/2002		
	Rates	Fringes
DOUGLAS AND SARPY COUNTIES; SAUNDERS COUNTY (east of Hwy. #109):		

## LABORERS:

## Sanitary improvement work:

General laborer	14.96	3.90
Mortar mixer, concrete saw operator, pipelayer and chain saw operator	15.25	3.90
Form setter, pre-cast manhole setter, inlet builder	15.69	3.90

## All other work:

General laborer	12.70	3.90
Mortar mixer, concrete saw operator, pipelayer and chain saw operator	12.99	3.90

Form setter, pre-cast manhole setter, inlet builder	13.45	3.90
--	-------	------

LABO1140G 01/01/2002

Rates

Fringes

WASHINGTON COUNTY:

LABORERS:

General laborer	11.70	3.90
-----------------	-------	------

Mortar mixer, concrete saw operator, pipelayer and chain saw operator	11.99	3.90
Form setter, pre-cast manhole setter, inlet builder	12.45	3.90

PAIN0081J 06/01/2001

Rates

Fringes

PAINTER

18.71

3.77

FOOTNOTES:

Work performed above 75 ft. on suspended staging: \$.50 per hour additional.

Spray machine operator: \$.50 per hour additional.

Nozzle operator for sandblasting and waterblasting (waterblasting more than 10,000 PSI) (including all side arm grinder operators engaged in removing paint or preparing for painting): \$.50 per hour additional.

SUNE2001A 12/20/1988

Rates

Fringes

CEMENT MASON

13.62

3.00

SUNE2005A 08/05/1993

Rates

Fringes

SPRINKLER INSTALLER (LAWN)

5.15

\* TEAM0554A 01/01/2002

Rates

Fringes

TRUCK DRIVERS:

Low boy driver	16.82	4.30
All other work	15.57	4.30

WELDERS - Receive rate prescribed for craft performing operation to which welding is incidental.

Unlisted classifications needed for work not included within the scope of the classifications listed may be added after award only as provided in the labor standards contract clauses

(29 CFR 5.5(a)(1)(v)).

-----

In the listing above, the "SU" designation means that rates listed under that identifier do not reflect collectively bargained wage and fringe benefit rates. Other designations indicate unions whose rates have been determined to be prevailing.

#### WAGE DETERMINATION APPEALS PROCESS

1.) Has there been an initial decision in the matter? This can be:

- \* an existing published wage determination
- \* a survey underlying a wage determination
- \* a Wage and Hour Division letter setting forth a position on a wage determination matter
- \* a conformance (additional classification and rate) ruling

On survey related matters, initial contact, including requests for summaries of surveys, should be with the Wage and Hour Regional Office for the area in which the survey was conducted because those Regional Offices have responsibility for the Davis-Bacon survey program. If the response from this initial contact is not satisfactory, then the process described in 2.) and 3.) should be followed.

With regard to any other matter not yet ripe for the formal process described here, initial contact should be with the Branch of Construction Wage Determinations. Write to:

Branch of Construction Wage Determinations  
Wage and Hour Division  
U. S. Department of Labor  
200 Constitution Avenue, N. W.  
Washington, D. C. 20210

2.) If the answer to the question in 1.) is yes, then an interested party (those affected by the action) can request review and reconsideration from the Wage and Hour Administrator (See 29 CFR Part 1.8 and 29 CFR Part 7). Write to:

Wage and Hour Administrator  
U.S. Department of Labor  
200 Constitution Avenue, N. W.  
Washington, D. C. 20210

The request should be accompanied by a full statement of the interested party's position and by any information (wage payment data, project description, area practice material, etc.) that the requestor considers relevant to the issue.

3.) If the decision of the Administrator is not favorable, an interested party may appeal directly to the Administrative Review Board (formerly the Wage Appeals Board). Write to:

Administrative Review Board  
U. S. Department of Labor

200 Constitution Avenue, N. W.  
Washington, D. C. 20210

- 4.) All decisions by the Administrative Review Board are final.  
END OF GENERAL DECISION

**SPECIAL PROVISIONS  
FOR  
FEDERAL AID  
PROJECT NO. STPP-275-7(183)**

**GENERAL CONDITIONS**

Sealed bids for the work contemplated in this proposal form will be received at the office of the Nebraska Department of Roads in Room 104 of the Central Office Building at 1500 Highway 2 at Lincoln, Nebraska, on May 23, 2002, until 1:30 P.M.

Bids submitted by mail should be addressed to the Nebraska Department of Roads, c/o Contract Lettings Section, P.O. Box 94759, Lincoln, NE 68509-4759.

The 1997 English Edition of the Standard Specifications for Highway Construction, including all amendments and additions thereto effective at the date of the contract, are made a part of these Special Provisions, through reference.

The Supplemental Specifications to the 1997 English Edition of the Standard Specifications for Highway Construction dated July 12, 2001, including all amendments and additions thereto effective at the date of the contract, are made part of these Special Provisions, through reference.

The Required Contract Provisions, Form FHWA 1273, (Rev. 4-93), and the Notice of Requirement for Affirmative Action to Ensure Equal Employment Opportunity and Standard Federal Equal Employment Opportunity Construction Contract Specifications dated November 3, 1980, are attached to and are a part of this proposal form.

The General Wage Decision issued under the Davis-Bacon and Related Acts is attached to and is a part of this proposal form.

The attention of bidders is directed to the Required Contract Provisions covering subletting or assigning the contract.

GROUPS 1, 3, 4, 8B AND 10 ARE TIED TOGETHER AND BIDDING PROPOSAL FORMS FOR THIS WORK WILL BE ISSUED AND A CONTRACT AWARDED TO A CONTRACTOR WHO IS QUALIFIED FOR CONCRETE PAVEMENT OR ELECTRICAL.

**DISADVANTAGED BUSINESS ENTERPRISES  
(S1-8-0801)**

A. Policy

The Contractor agrees to ensure that disadvantaged business enterprises as defined in 49 CFR Part 26 shall have a "level playing field" and equal opportunity to participate in the performance of contracts financed in whole or in part with Federal funds under this contract. Consequently, the disadvantaged business requirements of 49 CFR Part 26 are hereby made a part of and incorporated by this reference into this contract.



**B. Disadvantaged Business Enterprises Obligation**

The Contractor agrees to ensure that disadvantaged business enterprises as defined in 49 CFR Part 26 have a "level playing field" and equal opportunity to participate in the performance of contracts and subcontracts financed in whole or in part with Federal funds provided under this agreement. In this regard, the Contractor shall take all necessary and reasonable steps in accordance with 49 CFR Part 26 to ensure that disadvantaged business enterprises have a "level playing field" and equal opportunity to compete for and perform contracts. The Contractor shall not discriminate on the basis of race, color, national origin, or sex in the award and performance of FHWA assisted contracts.

Failure of the Contractor to carry out the requirements set forth above shall constitute breach of contract and, after the notification of the FHWA, may result in termination of the agreement or contract by the State or such remedy as the State deems appropriate.

**CERTIFICATION FOR FEDERAL-AID CONTRACTS  
(S1-11-0801)**

The prospective participant certifies, by signing and submitting this bid or proposal, to the best of his or her knowledge and belief, that:

- (1) No Federal appropriated funds have been paid or will be paid, by or on behalf of the undersigned, to any person for influencing or attempting to influence an officer or employee of any Federal agency, a Member of Congress, an officer or employee of Congress, or an employee of a Member of Congress in connection with the awarding of any Federal contract, the making of any Federal grant, the making of any Federal loan, the entering into of any cooperative agreement, and the extension, continuation, renewal, amendment, or modification of any Federal contract, grant, loan, or cooperative agreement.
- (2) If any funds other than Federal appropriated funds have been paid or will be paid to any person for influencing or attempting to influence an officer or employee of any Federal agency, a Member of Congress, an officer or employee of Congress, or an employee of a Member of Congress in connection with this Federal contract, grant, loan, or cooperative agreement, the undersigned shall complete and submit Standard Form-LLL, "Disclosure Form to Report Lobbying," in accordance with its instructions.

This certification is a material representation of fact upon which reliance was placed when this transaction was made or entered into. Submission of this certification is a prerequisite for making or entering into this transaction imposed by Section 1352, Title 31, U.S. Code. Any person who fails to file the required certification shall be subject to a civil penalty of not less than \$10,000 and not more than \$100,000 for each such failure.

The prospective participant also agrees by submitting his or her bid or proposal that he or she shall require that the language of this certification be included in all lower tier subcontracts, which exceed \$100,000 and that all such subrecipients shall certify and disclose accordingly.

## **STATUS OF UTILITIES**

The following information is current as of March 29, 2002.

Utility facilities, aerial and/or underground may exist within this project. The contractor shall determine to his satisfaction the extent of utility occupancy and utility conflict for facilities located within the construction areas.

At this time, no utilities have been required to relocate their facilities.

Any utility adjustments or interruption of service for the convenience of the Contractor shall be the sole responsibility of the Contractor.

To arrange for utilities to locate and flag their underground facilities, contact The Diggers Hotline of Nebraska at 1-800-331-5666.

Utilities known to be in the vicinity of this project.

Qwest Communications  
Cox Communications

Any work necessary will be concurrent with construction.

## **STATUS OF RIGHT-OF-WAY (S1-16-0801)**

According to the best information available, all necessary right-of-way has been acquired.

## **SUBCONTRACTOR BIDDERS LIST INFORMATION (S1-43-0801)**

All bidders must complete and submit with the bidding proposal, the "Subcontractor Bidders List" form provided by the NDR Contracts office.

Bidders must identify all firms who bid or quote subcontracts on all projects. If no bids or subcontractor quotations are received, the "Subcontractor Bidders List" must be submitted with the bidding documents and the bidder must indicate on the face of the "Subcontractor Bidders List" that no bids or subcontractor quotations were received.

**CONTROL OF WORK  
(S1-43-0901)**

Subsection 105.08 in the 1997 Standard Specifications is void and replaced by the following:

**105.08 - Authority and Duty of the Inspector**

Department inspectors are authorized to inspect all work performed and all materials furnished. Such inspection may extend to the preparation, fabrication, or manufacture of the materials. The inspector has the authority to reject work or materials until any issues can be decided, including the right to suspend work. The inspector is not authorized to alter or waive the provisions of the contract or act as a supervisor for the Contractor.

**105.13 – Tentative Acceptance of Portions of the Project**

Paragraph 3.a. of Subsection 105.13 is amended by deleting the word “normal”.

**LEGAL RELATIONS AND RESPONSIBILITY TO THE PUBLIC  
(S1-43-1001)**

**107.14 – Opening of Sections of the Project to Traffic**

Subsection 107.14 Paragraphs 2.b.(1) and (2) are void and replaced by the following:

- 2.b. (1) Whenever the Department permits the public use of a highway undergoing construction, repair, or maintenance in lieu of a detour route, the Contractor shall not be held responsible for damages to those portions of the project upon which the Department permitted public use, when such damages are the result of no proximate act or failure to act on the part of the Contractor.
- (2) If the traveling public should cause damage to the roadway, the Contractor shall assist the State in identifying the responsible party and the Contractor shall as a minimum if present at the time of the damage record pertinent information regarding the accident. (Who caused the damage; when the damage occurred; and how the damage was resulted.)

**107.15 – Contractor’s Responsibility for Work**

Subsection 107.15 is amended by adding Paragraph 1.b.(3) as follows:

- (3) The Contractor shall not be held responsible for damage caused by the traveling public on those portions of the project where the Department has permitted public use of the road in lieu of using a detour route and the damage as not the result of any proximate act or failure to act on the part of the Contractor.

**MEASUREMENT AND PAYMENT  
(S1-43-0901)**

109.08 – Acceptance, Final Payment, and Termination of Contractor's Responsibility

Subsection 109.08 Paragraph c. amended by deleting the word “normal”.

Subsection 109.08 Paragraph d. is void and replaced by the following:

d. If the traveling public should cause damage to the roadway the Contractor shall assist the State in identifying the responsible party and the Contractor shall as a minimum if present at the time of the damage record pertinent information regarding the accident. (Who caused the damage; when the damage occurred; and how are damage was resulted.)

**CONSTRUCTION DETAILS**

**FUEL COST ADJUSTMENT PAYMENT  
(S2-1-0801)**

Section 205 in the Standard Specifications and Supplemental Specifications is amended to include the following:

Payment will be made to the contractor for monthly fluctuations in the cost of diesel fuel used in performing the items of work, "Excavation", "Excavation, Borrow", "Excavation, Established Quantity", and/or "Earthwork Measured in Embankment" when the fuel cost fluctuates by more than 10% from the base price defined below. Payments may be positive, negative, or nonexistent depending on the circumstances. Payments or deductions will only be calculated on that portion of the fuel cost fluctuation that exceeds the 10% specified above.

Payments or deductions for the fuel cost adjustment will be included in the contractor's progress estimates; and the payment or deduction authorized for each estimate will be based upon the algebraic difference between the quantities for "Excavation", "Excavation, Borrow", "Excavation, Established Quantity", and/or "Earthwork Measured in Embankment" on the current estimate and the quantities shown on the previous estimate.

The fuel cost adjustment for the current estimate will be computed according to the following formula:

$FCA = QFD$  where

FCA = Fuel cost adjustment, in dollars;

Q = The algebraic difference between the quantities (in cubic yards or cubic meters) for "Excavation", "Excavation, Borrow", "Excavation, Established Quantity", and/or "Earthwork Measured in Embankment" on the current estimate and the quantities shown on the previous estimate;

F = English  
The fuel use factor for diesel fuel, in gallons per cubic yard. For the items of work "Excavation", "Excavation, Borrow", and "Excavation, Established Quantity", "F" shall be equal to .15. For the item of work "Earthwork Measured in Embankment", "F" shall be equal to .20.

Metric

The fuel use factor for diesel fuel, in liters per cubic meter. For the items of work "Excavation", "Excavation, Borrow", and "Excavation, Established Quantity", "F" shall be equal to .74. For the item of work "Earthwork Measured in Embankment", "F" shall be equal to 1.00.

D = Allowable price differential.

The allowable price differential, "D", for the current estimate will be computed according to the following formula:

When the current price, P, is greater than the base price, P(b).

$$D = P - 1.10P(b), \text{ but not less than zero.}$$

When the current price, P, is less than the base price, P(b).

$$D = P - .90P(b), \text{ but not greater than zero.}$$

In either case, P(b) shall be the base diesel price, in dollars per gallon (liter), defined as the average of the minimum and maximum prices for No. 2 Diesel Fuel (Oklahoma) published in the first issue of "*Platt's Oilgram Price Report*" for the month in which bids for the work were received.

In either case, P, shall be the current diesel price, in dollars per gallon (liter), defined as the average of the minimum and maximum prices for No. 2 Diesel Fuel (Oklahoma) published in the first issue of "*Platt's Oilgram Price Report*" for the month in which the progress estimate is generated.

## **GENERAL CLEARING AND GRUBBING (S2-2-0801)**

Paragraph 1. of Subsection 202.03 in the Supplemental Specifications is amended to provide that General Clearing and Grubbing shall include all tree removal.

Paragraphs 2.a., b., and c. of Subsection 202.03 in the Supplemental Specifications are void.

Paragraph 3. of Subsection 202.04 in the Supplemental Specifications is void and superseded by the following:

3. All tree removal is subsidiary to the pay item "General Clearing and Grubbing".

## **REMOVE LIGHTING UNIT**

Existing lighting units as indicated on the plans shall be removed. The lighting units to be removed are type SL-BT-30-15-8-0.20. The Contractor will remove the three lighting units by disassembling the luminaire from the mastarm, the mastarm from the pole and the pole from its concrete foundation.

The Contractor will remove the concrete pole foundation, including reinforced steel and anchor bolts, to a minimum of two feet below finished grade; backfill the excavation with clean soil and compact the soil to the density requirements of the project. The Contractor may, at his option, remove the foundation as an entire unit. Abandon existing unused conduit and cable in place.

All components of the existing lighting units will become the property of the Contractor and must be removed from the project.

### **Method of Measurement and Basis of Payment**

The item "Remove Lighting Unit" will be measured and paid for as a complete unit for each lighting unit removed and accepted by the engineer. This work shall include, but not limited to the following: Removing, salvaging, preparing, storing and transporting of the existing lighting units; removing existing concrete foundations; all necessary excavation, backfilling and disposal of surplus materials; for the termination and abandonment of existing underground feeders and for all materials, labor, equipment, tools and incidentals necessary to complete the work.

## **REMOVE MAST ARM SIGNAL POLE**

Section 203 in the 1997 English Edition of the Standard Specifications is amended to include the pay item REMOVE MAST ARM SIGNAL POLE. The pay unit for this item shall be Each (ea.).

Remove the combination mast arm signal pole designated on the plan. Remove the 3-section and 5-section traffic signal heads, the two pedestrian signals and the pedestrian pushbutton. Reinstallation of the 3-section heads, the two pedestrian signals, and the pedestrian pushbutton on the new pole at Sta. 325+63, Lt. 53' shall be under the pay item

“Install Traffic Signal, Type TS-1.” “Install Pedestrian Signal, Type PS-1”, and “Install Pedestrian Pushbutton.” Remove the foundation to a depth of two feet minimum or more if necessary to complete the construction of other items (i.e. conduit, pull box).

All other removed material shall become the property of the Contractor and shall be removed from the site.

### **EXCAVATION (ESTABLISHED QUANTITY)**

Subsections 205.04 and 205.05 in the 1997 English Edition of the Standard Specifications is amended as follows:

The water required for compaction will not be measured and paid for directly but shall be considered subsidiary to the item “Excavation (Established Quantity)”.

### **SUBGRADE PREPARATION (S3-1-0801)**

Paragraph 2.a. of Subsection 302.03 in the Standard Specifications is amended to include that trimming on narrow, irregular or roadway grading of 1/2 mile (0.8 km) or less may be accomplished using conventional methods.

### **AGGREGATE FOUNDATION COURSE-D**

Amend Section 307 of the 1997 English Edition of the Standard Specifications to include Aggregate Foundation Course-D. This specification applies to all depths of Aggregate Foundation Course-D shown on the plans.

1. Material Requirements
  - a. Foundation Course-D shall consist of mineral aggregate.
  - b. Aggregate shall conform to the quality requirements of Subsection 1033.02, Paragraphs 1., 2., and 9.
  - c. At least 14 days before beginning foundation course production, the Contractor shall submit a proposed mix design along with a 90 pound sample of each aggregate to the NDR Materials and Research laboratory for approval. The mix design will:
    1. Result in an aggregate mix that meets the gradation requirements of Table 1.
    2. Propose single defined values for the percentage passing each sieve on the gradations of Table 1.
    3. Include the average aggregate(s) gradations used to calculate the mix design.

4. Create a fine aggregate angularity value of 43.0 or greater according AASHTO T 304 Method A.
- d. The NDR Materials and Research laboratory will determine the specific moisture-density values for the proposed foundation course design.

Table 1

Aggregate Foundation Course-D Gradation Requirements		
Sieve Size	Target Value (Percent Passing)	Tolerance
1/2 in	100	0
3/8 in	100	-4
No. 4	93	±4
No. 10	60	±4
No. 30	28	±3
No. 40	20	±3
No. 200	3	±3

## 2. Construction Methods

- a. The Contractor shall place, compact and profile the foundation course as shown in the plans.
- b. The foundation course shall be spread in a uniform layer and compacted to at least 100 percent of the maximum density as determined by NDR T 99.
- c. After compaction the foundation course shall be trimmed such that the thickness will not vary from the plan thickness by more than ½ inch.

## 3. Method of Measurement

Aggregate Foundation Course-D shall be measured as prescribed in Paragraph 3. of Subsection 307.04.

## 4. Basis of Payment

Aggregate Foundation Course-D measured as provided herein shall be paid for at the contract unit price per square yard for the item, "Aggregate Foundation Course-D". This price shall be full compensation for all material, equipment, labor, tools and incidentals necessary to complete the work.



## **TEMPORARY TRAFFIC CONTROL DEVICES (S4-9-1201)**

Paragraphs 2.a. of Subsection 422.05 in the Standard Specifications is void and superseded by the following:

2.a. If signs are not returned or are returned damaged, and the damage is beyond reasonable "wear and tear" and the damage was caused by the Contractor, then the Contractor shall be charged the value of the missing or damaged items. These charges shall be deducted from monies due the Contractor upon final payment.

## **TEMPORARY TRAFFIC SIGNAL**

Section 422 in the 1997 English Edition of the Standard Specifications is amended to include the following:

### **TEMPORARY TRAFFIC SIGNAL AT 60<sup>th</sup> AND L STREET**

The Contractor shall furnish, construct, maintain and remove the temporary traffic signal as directed by the project manager. All equipment and material shall be furnished by the Contractor and will remain the Contractor's property.

The Contractor shall supply a solid state 170 style traffic signal controller capable of 8-phase operation. The Contractor shall program and maintain the controller. Contact Glen Hansen, City of Omaha, (402) 444-5253, for the phasing and timing data to program into the controller.

Wire the signal heads so that the heads for the left-turn lane and the heads for the through lanes can be operated independently. A minimum of three signal heads are required for each approach. The left-hand head on each approach shall be a 5-section left-turn head. Center the signal heads over the approach lanes. The signal heads for each approach shall have a minimum horizontal separation of 10 feet as viewed by the driver. The Contractor shall realign the signal heads as required for each phase of the project.

The Contractor shall maintain the entire temporary signal for the duration of the its use at no additional cost to the State.

Payment for the temporary traffic signal shall be full compensation for furnishing, installing, operating, maintaining and removing the temporary traffic signal and for all labor, equipment, tools, materials and incidentals required to complete the work.

## **LOCAL MATERIAL SOURCES (S5-1-0801)**

Information regarding possible sources of local materials is available at the Materials and Research Division of the Department of Roads, Lincoln, Nebraska.

## **SERVICE DISCONNECT PEDESTAL**

The service enclosure shall be fabricated by a manufacturer carrying a UL 508 listing, the dimensions of which shall be 12 inches wide, 43 inches high and 7.5 inches deep. The service enclosure shall be fabricated from 1/8 inches aluminum. The interior of the service enclosure shall be fabricated from 14 gauge cold rolled steel and painted white.

The service enclosure shall have continuous welded seams, a full length deadfront with stainless steel hinge and a pull section with a removable step.

The service enclosure shall have a fully framed side hinged outer door with swaged close tolerance sides for flush fit with top drip lip and closed cell neoprene flange compressed gaskets. The service enclosure shall have a hinged deadfront with a 1/4 turn latch & knurled knobs. The deadfront door shall be hinged on the same side as exterior door and open a minimum of 100°. The removable backpan shall be mounted on 4 welded 1/4" studs.

All circuit breakers shall be mounted in a vertical position, with the handle oriented up for "On" and down for "Off". The service enclosure shall consist of absolutely no "Bolt-On" or "Plug-In" circuit breakers. The service enclosure shall be completely prewired in the factory.

The wiring will be to NEMA IIB standards showing external connections and external equipment. All bussing shall be UL approved copper THHN cable bussing, fully rated. The function of all circuit breakers, switches and other components as required shall be identified by laminated engraved plastic nameplates with minimum 1/4" letters fastened with minimum of two #4-40 stainless steel machine screws.

The wiring schematics shall be produced with Computer Aided Drafting and include all external equipment and connections per NEMA IIB. As-built factory drawings shall be enclosed in clear plastic and held inside the outer door by welded hooks.

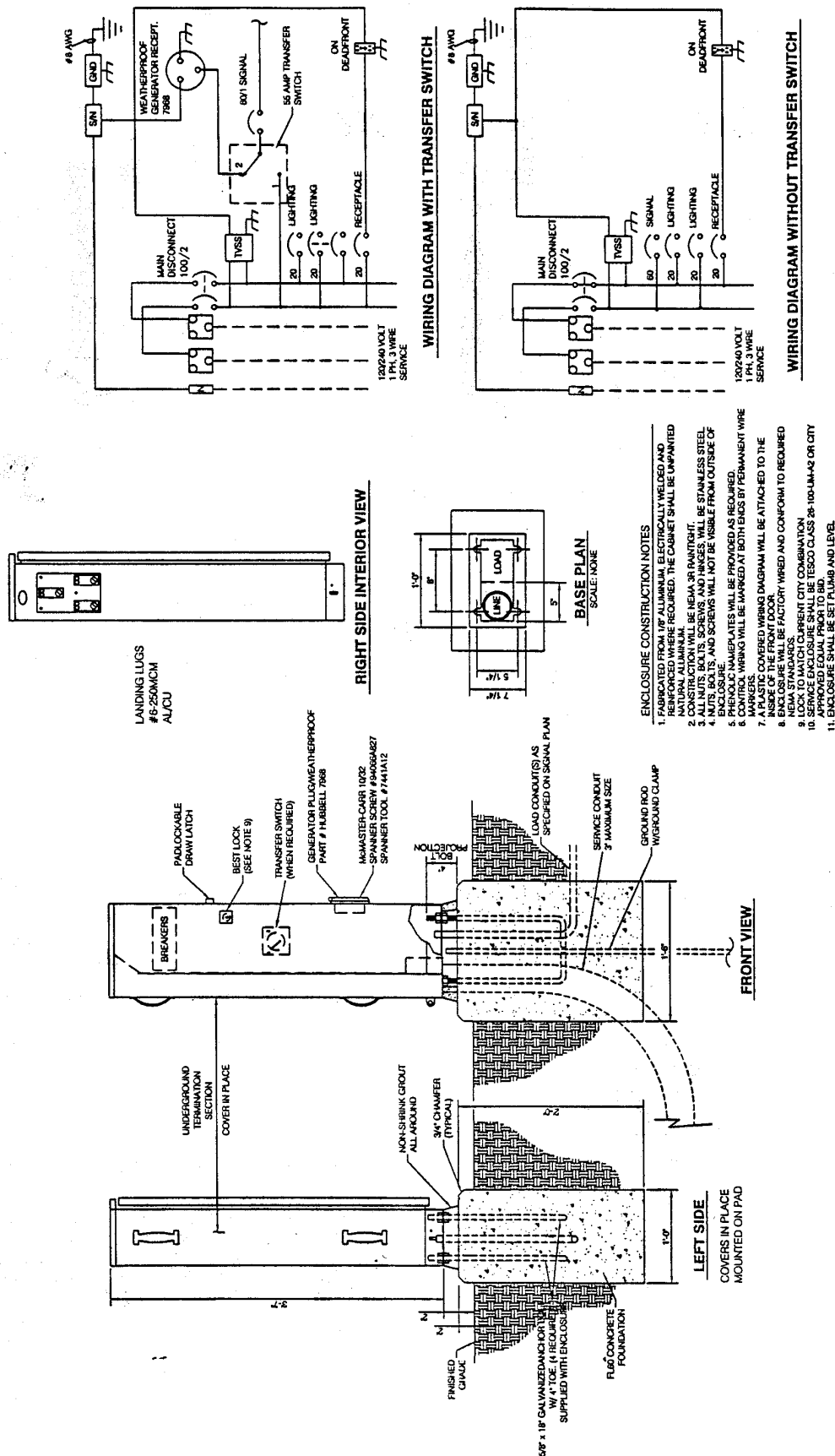
Manufacturers shall be required to furnish independent laboratory certification of metal preparation and finish and to confirm that the overall product meets these specifications. If the City wishes to witness this testing, all costs shall be paid by Contractor. The service enclosure shall be Tesco Class 26-100-UM-A or City approved equal prior to bid.

A generator transfer switch shall be provided with the service disconnect pedestal if it is so indicated on the plans.

If the location of the service disconnect pedestal is not indicated on the plans, it shall be field located within 50' to 100' of the traffic signal controller cabinet in line between the controller cabinet and power source. In order to arrange to have a representative from the City of Omaha come out to field locate the service disconnect pedestal, the Contractor shall contact the Construction Inspector (City of Omaha) at 444-5148 with two weeks notice prior to installing the service disconnect pedestal. The service disconnect pedestal shall be installed and connected to the power source as soon as possible after construction of the signal begins.

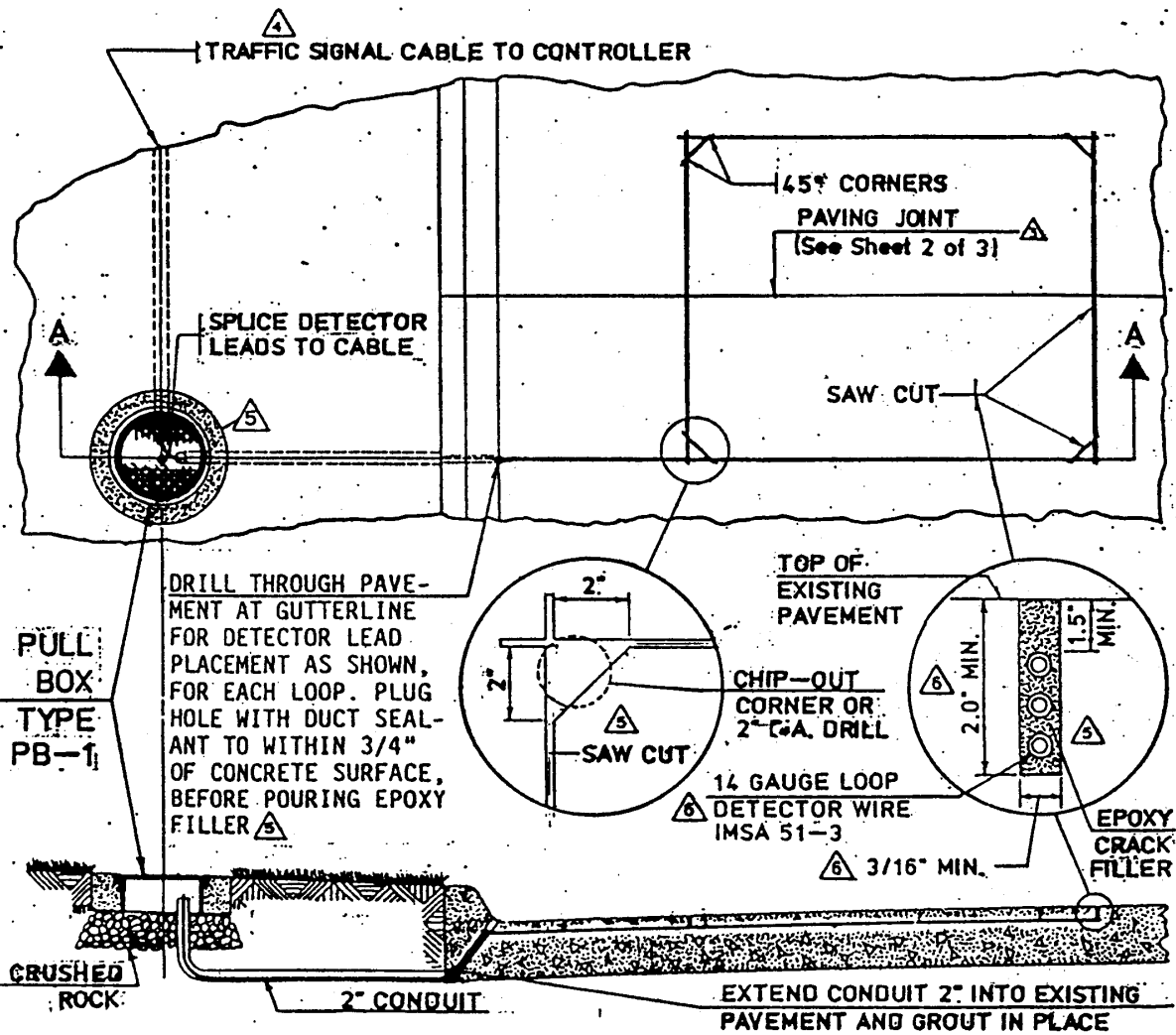
Note: This is a 100 AMP Service Rated Pedestal. Service conductors must be sized appropriately per section 230 of the National Electrical Code.

This work shall be measured and paid for on an each basis for the item "Service Disconnect Pedestal" and shall be considered full compensation for all work prescribed.



APPROVED: <i>[Signature]</i> 1/16/79 DESIGN ENGINEER DATE		CITY of OMAHA PUBLIC WORKS DEPARTMENT  <b>LOOP DETECTOR          INSTALLATION DETAIL</b>	REVISIONS 1. 1/16/79 4-2-75 2. 7-20-77 3. 6-13-78 4. 8-21-80 5. 11-4-88 6. 9-12-89	STANDARD PLATE NO.  <b>802</b> SHEET 1 OF 3
CITY ENGINEER DATE PUBLIC WORKS DIRECTOR DATE				

PLAN VIEW  
NO SCALE

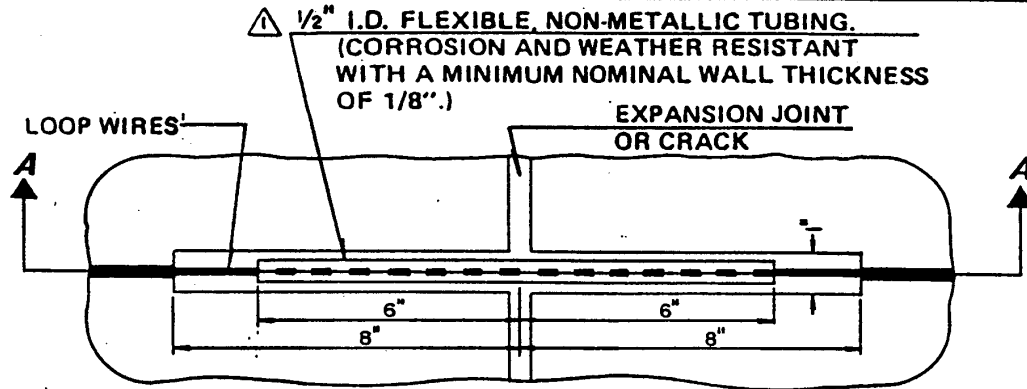


SECTION "AA"  
NO SCALE

NOTES

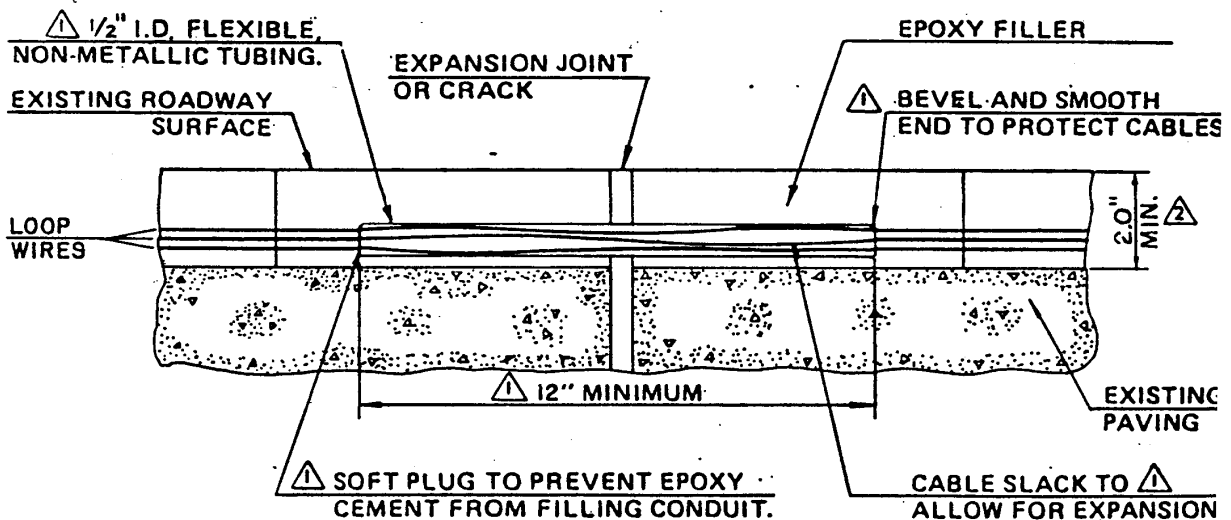
1. SAW CUT DEPTH AND WIDTH SHALL BE AS SHOWN ABOVE.
2. EPOXY CRACK FILLER (2.0" MINIMUM DEPTH) SHALL BE PLACED IN ALL SAW CUTS AND HOLES UPON COMPLETION OF DETECTOR INSTALLATION.
3. LOOP DETECTOR DIMENSIONS, THE NUMBER OF TURNS OF WIRE REQUIRED AND PULL BOX LOCATIONS SHALL BE AS SHOWN ON CONSTRUCTION PLANS.
4. EPOXY FILLER SHALL BE 3M LOOP SEALANT OR EQUIVALENT.
5. FINISHED LOOP SHALL SHOW NO SHORTED TURNS, NO BROKEN WIRE AND SHEG OHMS (MINIMUM) TO GROUND, MEASURED, WITH SIMPSON 260 VOLTMMETER OR EQUIVALENT.

<b>APPROVED:</b> <i>Michael J. ...</i> DATE <i>11-10-88</i> TRAFFIC ENGINEER <i>Ray P. ...</i> DATE <i>11-10-88</i> CITY ENGINEER		<b>CITY OF OMAHA</b> <b>PUBLIC WORKS DEPARTMENT</b> <b>LOOP DETECTOR</b> <b>PAVING JOINT DETAIL</b>		REVISION    DATE NEW    6-13-78 1    11-4-88 2    9-12-89	STANDARD PLATE NO. <b>802</b> SHEET 2 of 3
---	--	--	--	--	--



## PLAN VIEW

NO SCALE

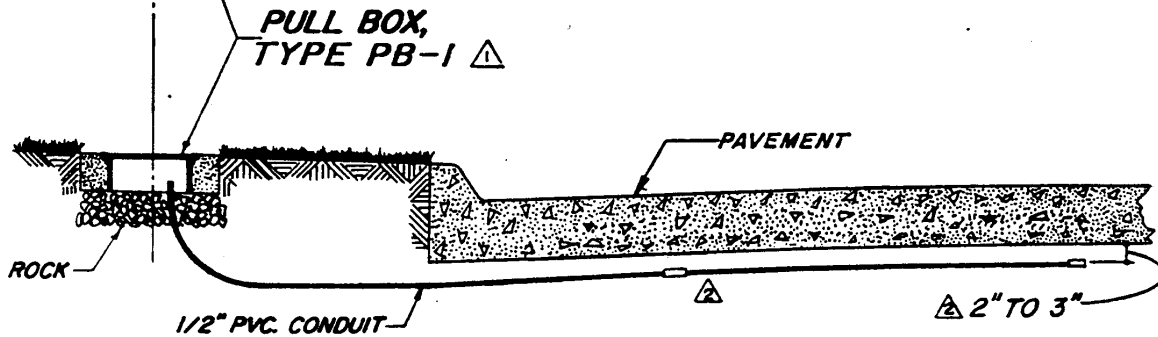
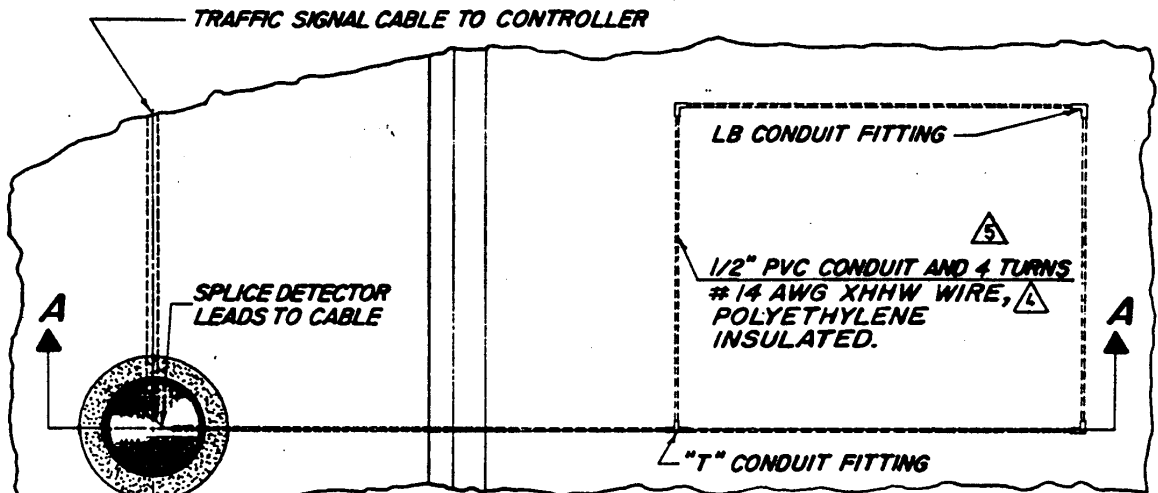


## SECTION "AA"

NO SCALE

<b>APPROVED:</b> <i>B. J. [Signature]</i> DATE <i>3-17-78</i> DESIGN ENGINEER <i>M. [Signature]</i> DATE <i>7-1-78</i> CITY ENGINEER DATE _____ PUBLIC WORKS DIRECTOR		<b>CITY OF OMAHA</b> <b>PUBLIC WORKS DEPARTMENT</b>		REVISION DATE 1 6-13-78 2 10-12-88 3 1-13-89 4 9-12-89 5 6-14-95	STANDARD PLATE NO. <b>802</b> SHEET 3 OF 3
<b>LOOP DETECTOR</b> <b>"CAST IN PLACE" DETAIL</b>					

**PLAN VIEW**  
NO SCALE



**SECTION 'AA'**  
NO SCALE

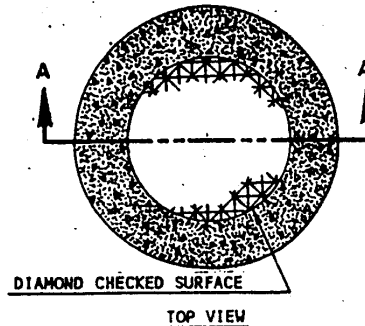
**NOTES:**

1. PVC CONDUIT SHALL BE SCHEDULE 40 PIPE SIZE. INSTALL COMPLETE LOOP (CONDUIT AND WIRE) JUST PRIOR TO POURING CONCRETE. USE EXTREME CARE DURING CONSTRUCTION TO ELIMINATE DAMAGE TO LOOP
2. FINISHED LOOP SHALL SHOW NO SHORTED TURNS, NO BROKEN WIRE AND 5 M OHMS (MINIMUM) TO GROUND, MEASURED WITH SIMPSON 260 VOLTOHMETER OR EQUIVALENT.

APPROVED: <i>Charlie Kopp</i> 7-18-94 TRAFFIC ENGINEER DATE <i>Randy A. Neumann</i> 7-27-94 CITY ENGINEER DATE	<b>CITY of OMAHA</b> <b>PUBLIC WORKS DEPARTMENT</b>  <b>PULL BOX</b> <b>TYPE PB-1 AND PB-1A</b>	REVISIONS <table border="1" style="width: 100%; border-collapse: collapse;"> <tr> <td style="width: 10px; text-align: center;">▲</td> <td style="width: 50px;">4-27-94</td> </tr> <tr><td> </td><td> </td></tr> <tr><td> </td><td> </td></tr> <tr><td> </td><td> </td></tr> <tr><td> </td><td> </td></tr> <tr><td> </td><td> </td></tr> </table>	▲	4-27-94											STANDARD PLATE NO.  <b>803</b> Sheet 1 of 2
▲	4-27-94														

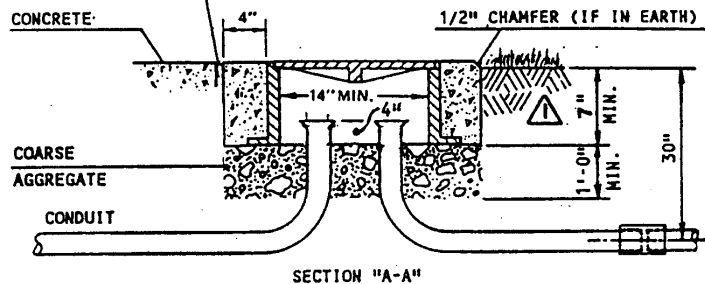
## NOTES

1. PULL BOXES, TYPE PB-1, SHALL HAVE ONE SPARE BEND INSTALLED AND CAPPED OR PLUGGED AT BOTH ENDS WITH THE CORRECT SIZE AND TYPE OF FITTINGS FOR THE TYPE OF CONDUIT FURNISHED.
2. ACCESS DUCTS, BENDS AND/OR SWEEPS ARE SUBSIDIARY TO THE ITEM "PULL BOX, TYPE PB-1" OR "PULL BOX, TYPE PB-1A".
3. COARSE AGGREGATE FOR FILL MATERIAL SHALL BE GRAVEL COMPOSED OF CLEAN, HARD DURABLE AND UNCOATED PARTICLES.
4. PROLONGED EXPOSURE OF THE PULL BOX AND COVER TO SUNLIGHT, COMMON ICE MELTING CHEMICALS, OR FERTILIZERS SHALL NOT CAUSE SIGNIFICANT DAMAGE TO THE PULL BOX OR COVER, OR IMPAIR ITS FUNCTION.
5. PULL BOXES WHICH ARE INTENDED FOR INSTALLATION IN SURFACED AREAS, SUCH AS SIDEWALKS OR SURFACED MEDIANS, SHALL HAVE A LIP OR FLANGED EDGE FRAMING THE COVER OPENING TO PROVIDE A FLUSH, FRAMED SEPARATION BETWEEN THE SURFACING MATERIAL AND THE EDGES OF THE COVER.
6. PULL BOX COVERS SHALL BE EMBOSSED WITH AN ANTI-SLIP SURFACE PATTERN, AND SHALL FIT SUFFICIENTLY TIGHT TO PREVENT ENTRANCE OF RUN-OFF WATER.
7. PULL BOXES SHALL BE CAPABLE OF SUPPORTING VEHICULAR TRAFFIC IN ACCORDANCE WITH AASHTO SPECIFICATION H-20 LOADING.
8. TYPE PB-1 PULL BOXES HAVE GROUNDED LIDS AND TYPE PB-1A PULL BOXES HAVE UNGROUNDED LIDS.

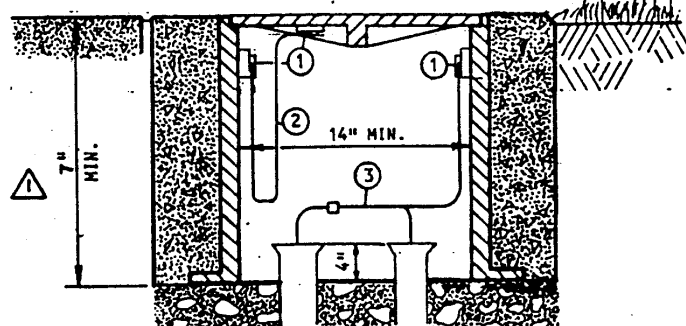


1/2" PREFORMED EXPANSION  
JOINT FILLER TO DEPTH OF  
ABUTTING CONCRETE

NOTE: SEATING SURFACES OF FRAME  
AND COVER SHALL BE MACHINED  
TO FIT. FRAME AND COVER TO  
BE CAST IRON.



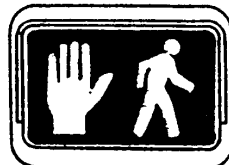
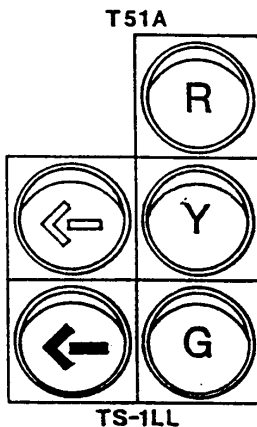
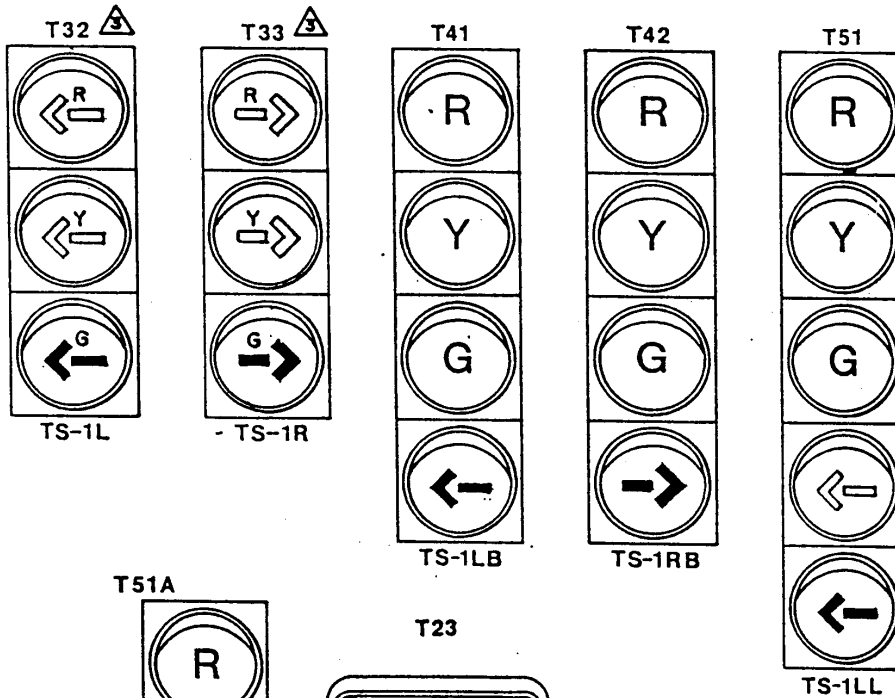
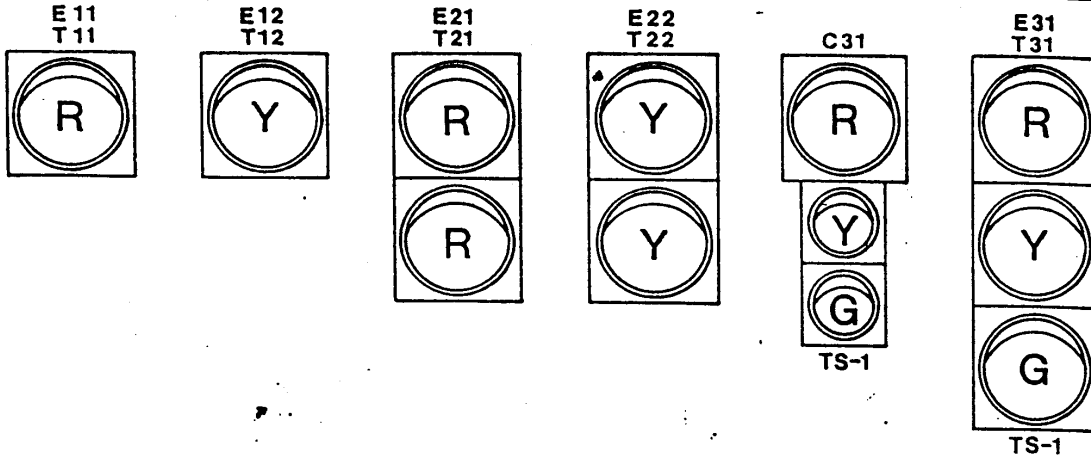
- ① BRONZE GROUNDING LUG. (MAY BE BOLTED OR BRAZED TO RING AND COVER)
- ② FLEXIBLE GROUNDING CONDUCTOR: 24", NO 6 THHN STRANDED COPPER, GREEN.
- ③ NO. 6 GROUNDING CONDUCTOR



<b>APPROVED:</b> <i>Charles Kuykendall</i> DATE <u>11/16/84</u> TRAFFIC ENGINEER <i>Barry L. Johnson</i> DATE <u>11/16/84</u> CITY ENGINEER <i>James F. Little</i> DATE <u>11/16/84</u> PUBLIC WORKS DIRECTOR	<b>CITY OF OMAHA</b> <b>PUBLIC WORKS DEPARTMENT</b>	<table border="1" style="width: 100%; border-collapse: collapse;"> <tr> <th>REVISION</th> <th>DATE</th> </tr> <tr> <td>1</td> <td>6-4-87</td> </tr> <tr> <td>2</td> <td>1-22-88</td> </tr> <tr> <td>3</td> <td>2-8-88</td> </tr> <tr> <td> </td> <td> </td> </tr> <tr> <td> </td> <td> </td> </tr> </table>	REVISION	DATE	1	6-4-87	2	1-22-88	3	2-8-88					<b>STANDARD PLATE NO.</b>  <div style="font-size: 2em; font-weight: bold;">807</div>
REVISION	DATE														
1	6-4-87														
2	1-22-88														
3	2-8-88														

## STANDARD SIGNAL FACE ARRANGEMENTS

### VERTICAL SIGNAL HEADS



T23

PS-1

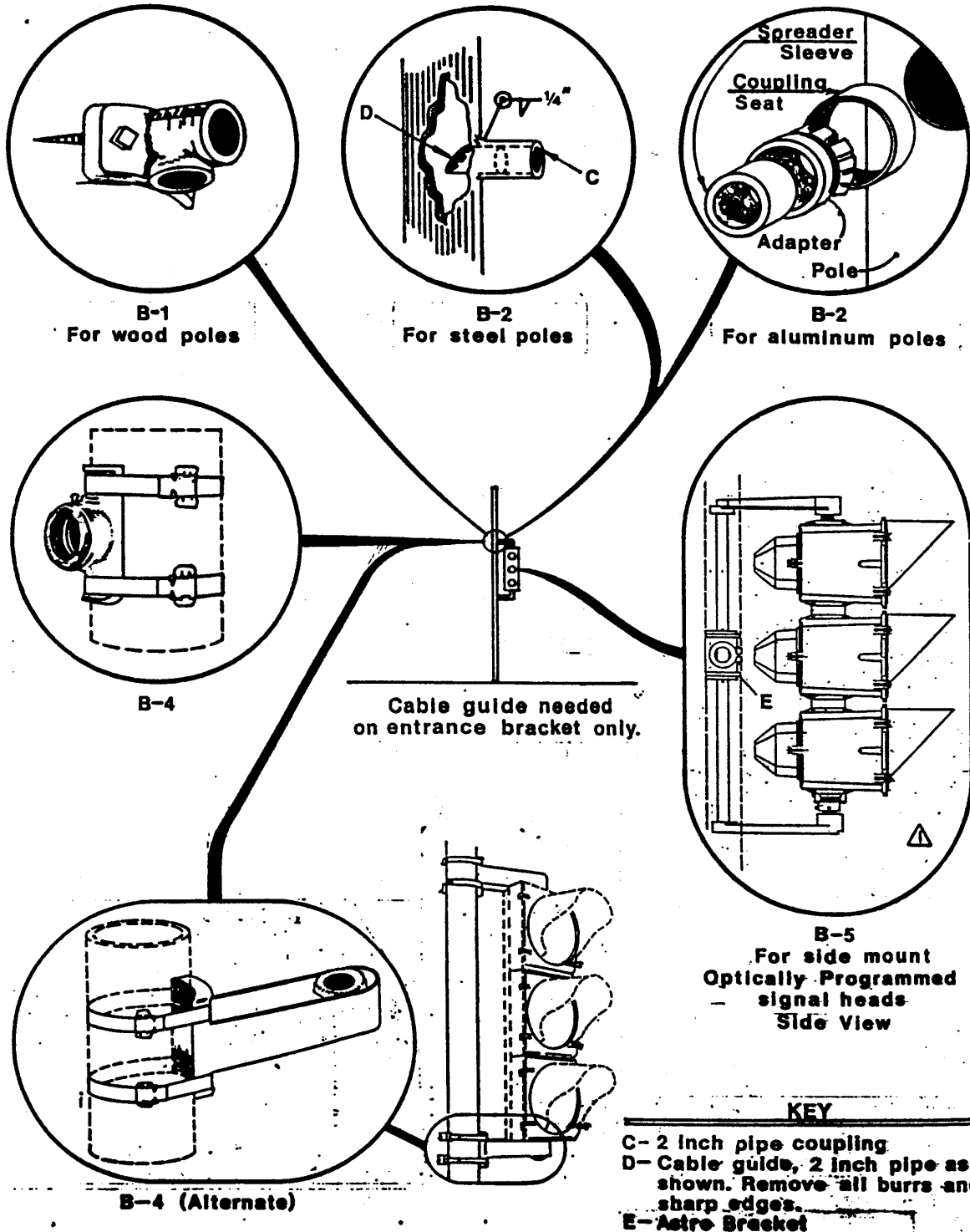
PS-1

### SIGNAL FACE NOTATION KEY

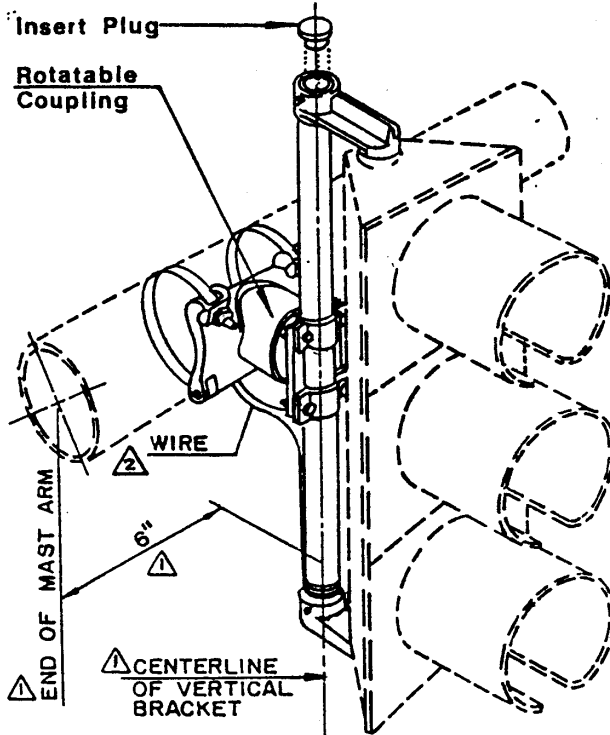
- |   |     |
|---|-----|
| E- All 8" Signal Lenses                   | X00 |
| T- All 12" Signal Lenses                  |     |
| C- Combination of 8" & 12" Signal Lenses. |     |
| Number of Lenses in Signal Face.          |     |
| Signal Face Arrangement                   |     |



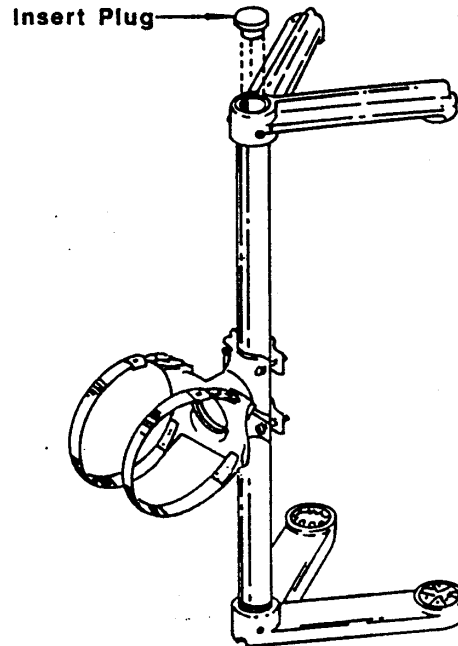
<b>APPROVED:</b> <i>Charles Krug</i> DATE 11/16/89 TRAFFIC ENGINEER <i>Ray P. Hansen</i> DATE 11/16/89 CITY ENGINEER <i>James H. Smith</i> DATE 11/16/89 PUBLIC WORKS DIRECTOR	<b>CITY OF OMAHA</b> <b>PUBLIC WORKS DEPARTMENT</b> <b>POLE BRACKET</b> <b>INSTALLATION DETAILS</b>	REVISION DATE 4-8-93	<b>STANDARD</b> <b>PLATE</b> <b>NO.</b> <b>809</b>
		(Empty revision table)	



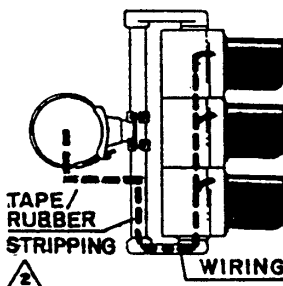
APPROVED		CITY OF OMAHA		TRAFFIC ENGINEER		DATE 11/16/87	
Charles Kasper		PUBLIC WORKS DEPARTMENT		CITY ENGINEER		DATE 11/16/87	
James H. Smith		MAST ARM		PUBLIC WORKS DIRECTOR		DATE 11/16/87	
		MOUNTING DETAILS				PLATE NO. 813	



MA 5 ADJUSTABLE  
MAST ARM MOUNTING  
HORIZONTAL OR VERTICAL  
INSTALLATION



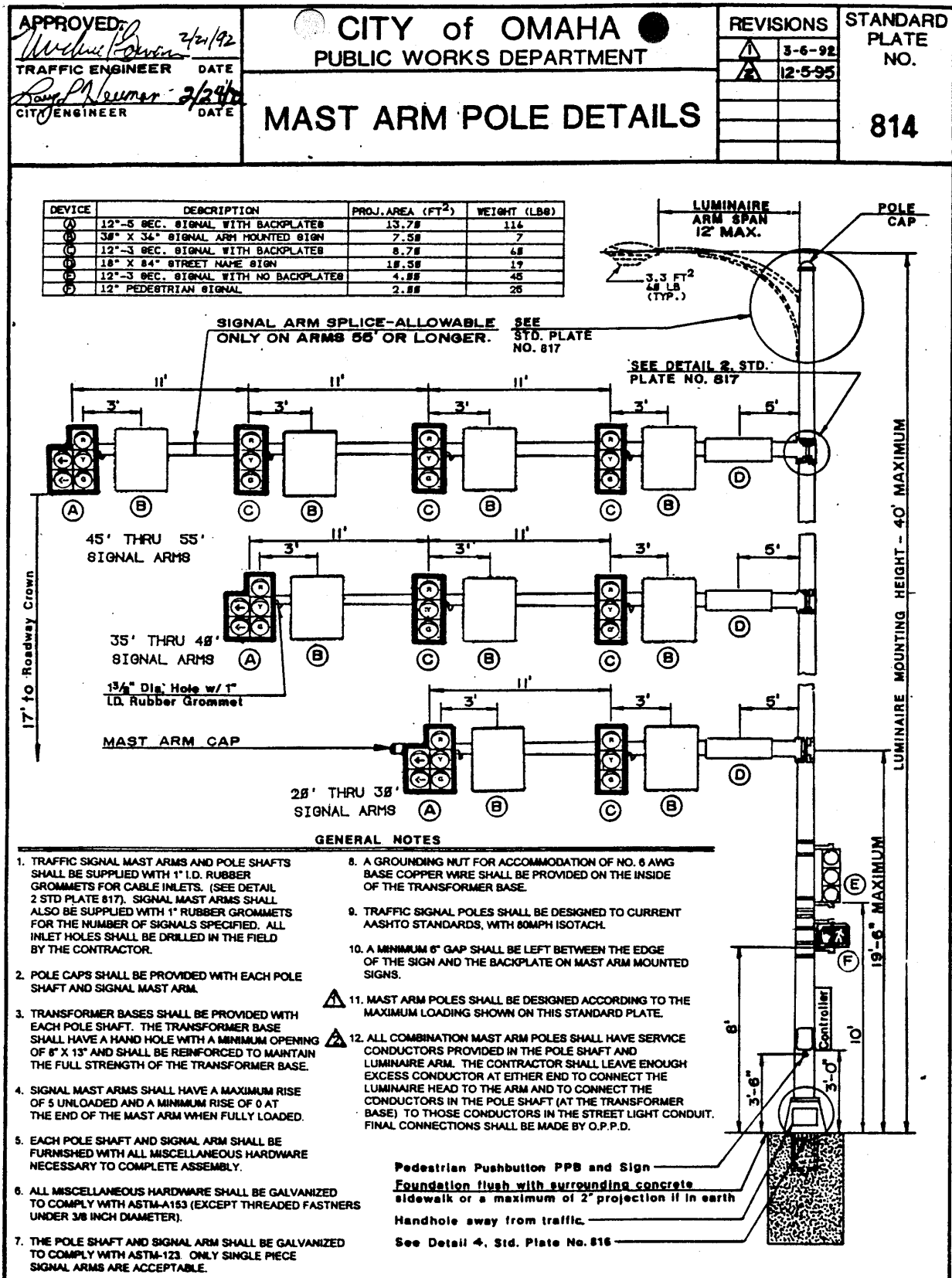
MA 5-1  
MOUNTING  
HARDWARE



Wiring  
Diagram

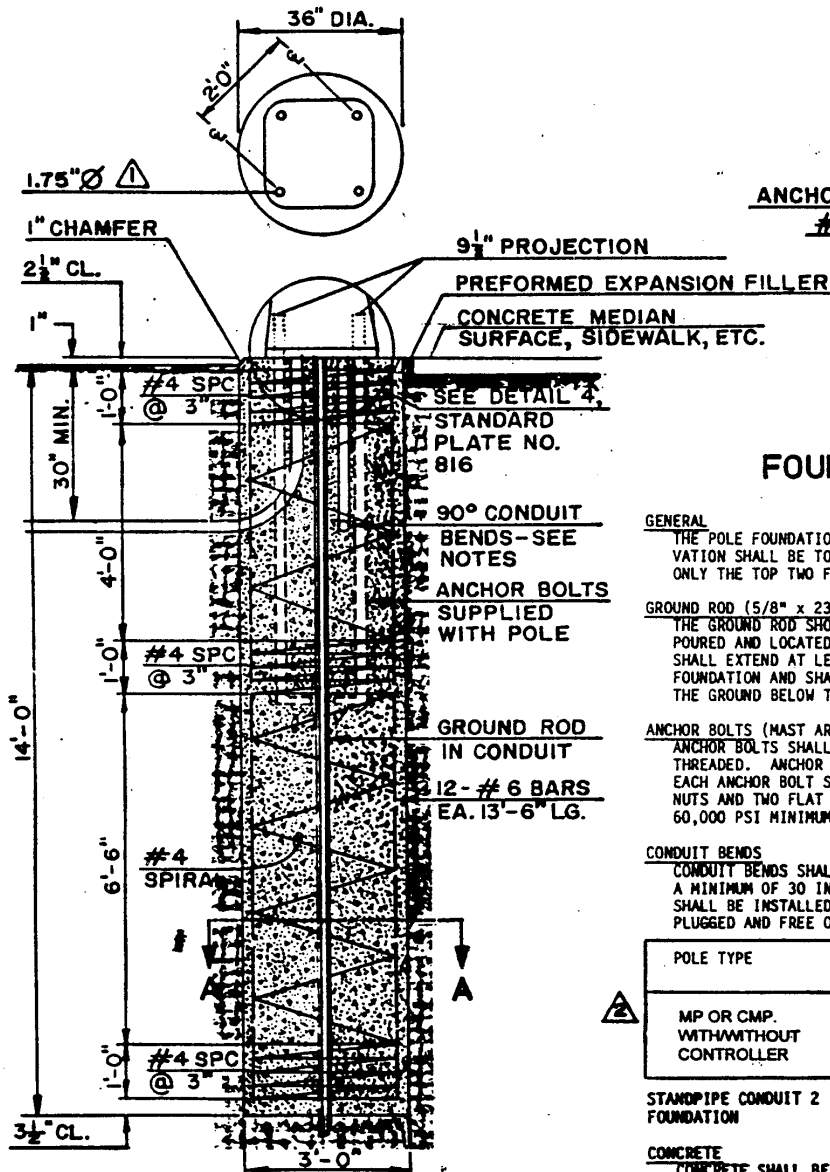
#### GENERAL NOTES

- 1.) PIPE COUPLINGS FOR SIGNAL BRACKETS SHALL BE EITHER 1 1/4 INCH OR 2 INCH DEPENDING UPON THE SIGNAL HEAD TO BE INSTALLED. SIGNAL BRACKETS SHALL BE FURNISHED BY THE MANUFACTURER OF THE SIGNAL HEADS.
- 2.) UNLESS OTHERWISE SPECIFIED IN THE PLANS, ALL TRAFFIC SIGNALS MOUNTED ABOVE THE ROADWAY SHALL HAVE A HEIGHT OF 17' 6", ALL SIDE MOUNTED TRAFFIC SIGNAL A HEIGHT OF 10' AND PEDESTRIAN SIGNALS AT A HEIGHT OF 8' AS MEASURED TO THE BOTTOM OF THE SIGNAL HEAD HOUSING OR BACKPLATE.
- 3.) ALL SIGNAL HEADS SHALL BE MOUNTED IN SUCH A MANNER AS TO BE EASILY REMOVED FROM THEIR SUPPORTING STRUCTURE.
- 4.) GASKET SEALING COMPOUND SHALL BE USED IN ADDITION TO ANY LEAD WASHERS REQUIRED FOR CREATING A WATER-TIGHT CONNECTION BETWEEN THE SIGNAL HEAD AND MOUNTING BRACKET.
- 5.) SIGNAL HEADS SHALL BE SECURELY AFFIXED TO THEIR RESPECTIVE POSITIONS BY USE OF SERRATED COUPLING OR OTHER ACCESSORIES RECOMMENDED BY THE SIGNAL MANUFACTURER.
- 6.) WIRING FROM INSIDE MAST ARM THROUGH 1" FIELD DRILLED HOLE IN ARM, SHALL BE BROUGHT THROUGH MA-5 SUPPORT TUBE AND LOWER ARM (AS SHOWN). FIELD DRILLED HOLES SHALL HAVE RUBBER GROMMETS INSTALLED.



APPROVED: <i>Michael J. ...</i> 3/2/12 TRAFFIC ENGINEER DATE <i>James P. ...</i> 2/24/12 CITY ENGINEER DATE		CITY of OMAHA PUBLIC WORKS DEPARTMENT <b>MAST ARM POLE          FOUNDATION DETAILS          FOR MAST ARMS BETWEEN 45' AND 61'</b>		REVISIONS 4-23-92 12-5-96 12-31-96	STANDARD PLATE NO. <b>815</b> Sheet 2 of 2
---	--	---	--	---	--

## POLE FOUNDATION



## SECTION A-A

## FOUNDATION NOTES

## GENERAL

THE POLE FOUNDATION SHALL BE ROUND. THE EXCAVATION SHALL BE TO THE NEAT LINES OF THE FOUNDATION. ONLY THE TOP TWO FEET MAY BE FORMED.

## GROUND ROD (5/8" x 23') AND CLAMP

THE GROUND ROD SHOULD BE PLACED BEFORE THE CONCRETE IS POURED AND LOCATED AS SHOWN IN FOUNDATION DETAIL. IT SHALL EXTEND AT LEAST EIGHT INCHES ABOVE TOP OF FINISHED FOUNDATION AND SHALL EXTEND A MINIMUM OF EIGHT FEET INTO THE GROUND BELOW THE FOUNDATION.

## ANCHOR BOLTS (MAST ARM FOUNDATION ONLY)

ANCHOR BOLTS SHALL BE 1.75" DIA. x 84" x 6" AND SHALL BE THREADED. ANCHOR BOLT CIRCLE SHALL BE 24" IN DIAMETER. EACH ANCHOR BOLT SHALL BE SUPPLIED WITH TWO HEXAGONAL NUTS AND TWO FLAT WASHERS. ANCHOR BOLTS SHALL BE 60,000 PSI MINIMUM YIELD STRENGTH.

## CONDUIT BENDS

CONDUIT BENDS SHALL BE 90 DEGREES. THEY SHALL BE LOCATED A MINIMUM OF 30 INCHES BELOW GROUND LEVEL. SPARE CONDUITS SHALL BE INSTALLED IN EACH FOUNDATION WITH BOTH ENDS PLUGGED AND FREE OF MOISTURE ACCORDING TO THE FOLLOWING:

POLE TYPE	# OF SPARE CONDUIT BENDS	SIZE OF CONDUIT
MP OR CMP. WITH/WITHOUT CONTROLLER	3 * 3	3 * 3-2"

STANDPIPE CONDUIT 2 INCH MINIMUM ABOVE TOP OF FINISHED FOUNDATION

## CONCRETE

CONCRETE SHALL BE CLASS FL60 OR SG65 WITH A COMPRESSIVE STRENGTH OF 3000 PSI.

## REINFORCING STEEL

REINFORCING STEEL SHALL BE GRADE 60 (60,000 PSI) DEFORMED BARS.

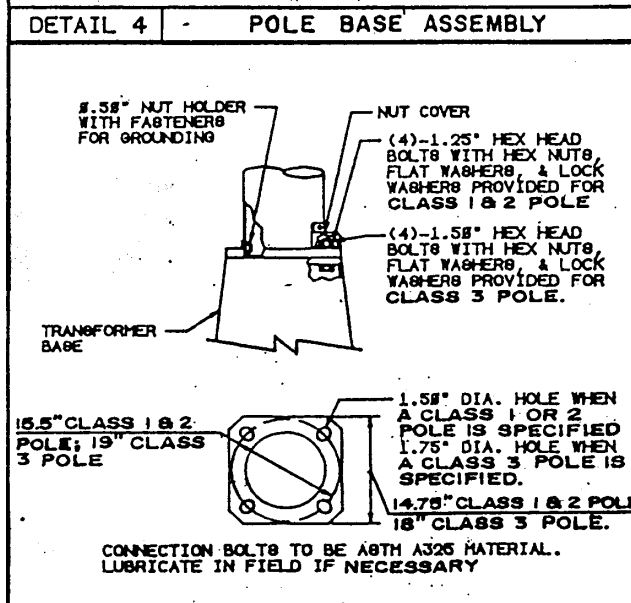
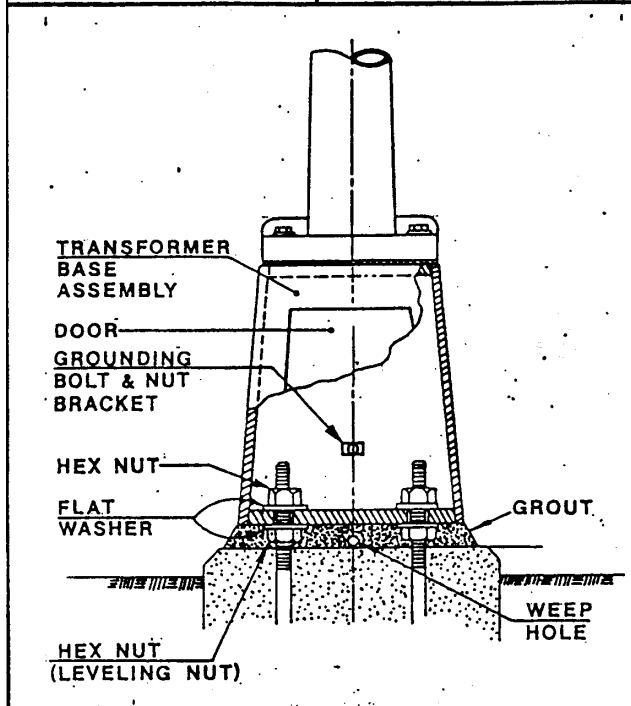
\* IF CONDUIT FOR STREET LIGHTS IS SHOWN (PART OF THE PLANS), THIS QUANTITY CAN BE REDUCED TO 1 (ONE).

## ALTERNATE CONCRETE BASE

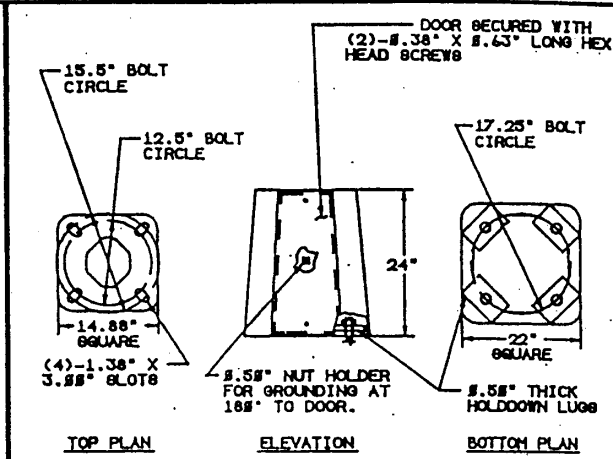
KEEPING THE SAME DIMENSIONS (3' DIAMETER AND 14' DEPTH), CONCRETE AND TYPE REINFORCING STEEL SHOWN ON STANDARD PLATE 815 SHEET 2 OF 2, THE REINFORCING STEEL LAYOUT INDICATED ON STANDARD PLATE 815 SHEET 1 OF 2 CAN BE USED INSTEAD OF THE SPIRAL.

THE 2'-4" DIAMETER HOOPS SHALL BE MADE USING #4 REBAR, SPACED ON 8" INTERVALS, 20 PER FOUNDATION. THE 13'-6" LONG #6 REBAR SHALL BE PLACED AS SHOWN, 12 PER FOUNDATION.

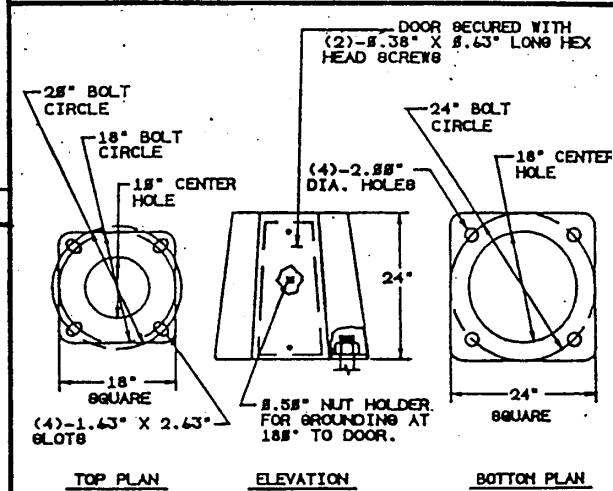
<p>APPROVED: <i>[Signature]</i> 2/21/92          TRAFFIC ENGINEER DATE</p> <p><i>[Signature]</i> 2/21/92          CITY ENGINEER DATE</p>	<p><b>CITY of OMAHA</b>          PUBLIC WORKS DEPARTMENT</p> <p><b>TRANSFORMER BASE          DETAILS</b></p>	<p>REVISIONS</p> <table border="1" style="width: 100%; border-collapse: collapse;"> <tr> <td style="width: 10px;">A</td> <td style="width: 100px;">4-27-94</td> </tr> <tr><td> </td><td> </td></tr> <tr><td> </td><td> </td></tr> <tr><td> </td><td> </td></tr> <tr><td> </td><td> </td></tr> </table>	A	4-27-94									<p>STANDARD          PLATE          NO.</p> <p style="font-size: 24pt;"><b>816</b></p>
A	4-27-94												



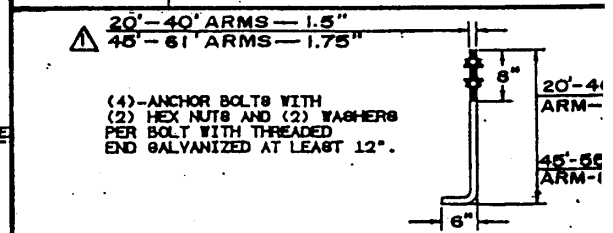
**DETAIL 5 - POLE BASE**



**DETAIL 6 - CLASSES 1 & 2 POLE BASE**



**DETAIL 7 - CLASS 3 POLE BASE**



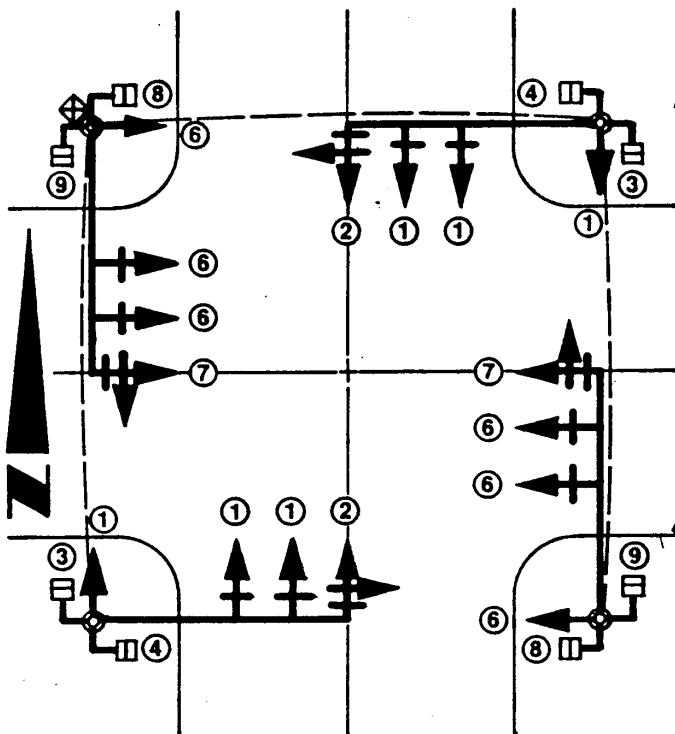
**DETAIL 8 - ANCHOR BOLT**

**CLASS 1 POLES: 20' TO 30' ARM LENGTH**  
**CLASS 2 POLES: 35' TO 40' ARM LENGTH**  
**CLASS 3 POLES: 45' TO 55' ARM LENGTH**

APPROVED: <i>Michael J. Brown</i> 2/21/92 TRAFFIC ENGINEER DATE <i>Randy Neumann</i> 2/24/92 CITY ENGINEER DATE	CITY of OMAHA PUBLIC WORKS DEPARTMENT <b>LUMINAIRE ARM DETAILS</b>	REVISIONS <table border="1" style="width: 100%; height: 100px;"> <tr><td> </td><td> </td></tr> <tr><td> </td><td> </td></tr> <tr><td> </td><td> </td></tr> <tr><td> </td><td> </td></tr> <tr><td> </td><td> </td></tr> <tr><td> </td><td> </td></tr> <tr><td> </td><td> </td></tr> <tr><td> </td><td> </td></tr> </table>																	STANDARD PLATE NO. <b>817</b>
<div style="display: flex; justify-content: space-between;"> <div style="width: 30%;"> <p><b>LUMINAIRE MOUNTING HEIGHT</b></p> <p>PLAIN TOP DRILLING PATTERN TO BE FIELD DRILLED</p> </div> <div style="width: 65%;"> </div> </div> <p>A- MATING ARM &amp; POLE STEEL SIMPLEX ATTACHMENTS WITH WIRING RACEWAY CONFORMING TO ASTM DESIGNATION A27 GRADE 65 - 35; SECURED IN PLACE WITH (2)-0.5" x 1.25" CAP SCREWS</p> <p>B- 2" STD. SCHED. 40 PIPE ASTM, A53A</p> <p>C- 1/2" SQ. NUT SCROLL FASTENER</p> <p>D- SINGLE BOLT ARM ATTACHMENT, FASTENED W/1/2" x 3/4" S.B. N.C.R. (TAPERED BOLT HEAD)</p> <p>E- 1 1/2" x 1/2" x 1/8" COMMERCIAL GRADE STEEL CHANNEL SCROLL</p> <p>F- 2" STANDARD GRADE A PIPE AS GIVEN IN ASTM - A53</p>																			
<p>DETAIL 1 POLE EXTENSION FOR 19'-8" POLES</p>		<p>DETAIL 2 SIGNAL ARM ATTACHMENT</p>																	
<div style="border: 1px solid black; padding: 5px; margin-bottom: 10px;">             MFR DATE              OMA-1           </div> <p>POLE CLA88 (1, 2 OR 3)</p> <p>OMAHA POLE SERIES</p> <p>NOTE: TAG LOCATED 6" FROM BASE OF POLE.</p> <p style="text-align: center;">POLE</p>	<div style="border: 1px solid black; padding: 5px; margin-bottom: 10px;">             MFR DATE              OMA-1-28           </div> <p>ARM SPAN (28 THRU 55)</p> <p>POLE CLA88 (1, 2 OR 3)</p> <p>OMAHA POLE SERIES</p> <p>NOTE: TAG LOCATED ON BOTTOM SIDE OF ARM.</p> <p style="text-align: center;">SIGNAL ARM</p>	<div style="border: 1px solid black; padding: 5px; margin-bottom: 10px;">             MFR DATE              OMA-EXT-38-6           </div> <p>LUM. ARM SPAN (8, 6, 12)</p> <p>MTG. HTG (38" OR 48")</p> <p>POLE EXTENSION</p> <p>OMAHA POLE SERIES</p> <p>NOTE: TAG LOCATED 6" FROM EXT. BASE, AND 188" FROM HANDHOLE.</p> <p style="text-align: center;">POLE EXTENSION</p>	<div style="border: 1px solid black; padding: 5px; margin-bottom: 10px;">             MFR DATE              XXX           </div> <p>TRANSFORMER BASE TYPE</p> <p>NOTE: TAG LOCATED 188" FROM DOOR OPENING.</p> <p style="text-align: center;">TRANSFORMER BASE</p>																
DETAIL 3 ID TAGS																			

<b>APPROVED:</b> <i>Charles K. King</i> DATE <i>12/6/94</i> TRAFFIC ENGINEER <i>David P. Johnson</i> DATE <i>12/6/94</i> CITY ENGINEER <i>James H. Little</i> DATE <i>12/6/94</i> PUBLIC WORKS DIRECTOR	<b>CITY OF OMAHA</b> <b>PUBLIC WORKS DEPARTMENT</b> <b>STANDARD</b> <b>TRAFFIC SIGNAL</b> <b>WIRING CODE</b>	<table border="1" style="width: 100%; border-collapse: collapse;"> <tr> <th>REVISION</th> <th>DATE</th> </tr> <tr> <td>1</td> <td>12-8-88</td> </tr> <tr> <td>2</td> <td>4-22-96</td> </tr> <tr><td> </td><td> </td></tr> <tr><td> </td><td> </td></tr> <tr><td> </td><td> </td></tr> <tr><td> </td><td> </td></tr> </table> <div style="text-align: center;"> <b>STANDARD</b>  <b>PLATE</b>  <b>NO.</b>  <span style="font-size: 1.5em; font-weight: bold;">822</span> </div>	REVISION	DATE	1	12-8-88	2	4-22-96								
REVISION	DATE															
1	12-8-88															
2	4-22-96															

### 3 TO 8 PHASE INSTALLATIONS



#### MAST ARM POLES ON THE NE & SW CORNERS

WIRE COLOR	TRACER	SIGNAL NO.	FUNCTION
Green		1 & 2	Green
Orange		1 & 2	Yellow
Red		1 & 2	Red
Green	Black	2	Green Arrow
Orange	Black	2	Yellow Arrow
Red	Black	2	Red Arrow
Green	White	3	Walk
Red	White	3	Don't Walk
Blue	White	4	Walk
Black	White	4	Don't Walk
Blue	Black		Spare
White	Black		Spare
Black	Black		Spare
Blue	Black		Spare
Black	Red		Common White Tag
White			Common

#### MAST ARM POLES ON THE NW & SE CORNERS

WIRE COLOR	TRACER	SIGNAL NO.	FUNCTION
Green			Spare
Orange			Spare
Red			Spare
Green	Black	7	Green Arrow
Orange	Black	7	Yellow Arrow
Red	Black	7	Red Arrow
Green	White	9	Walk
Red	White	9	Don't Walk
Blue	White	8	Walk
Black	White	8	Don't Walk
Blue		6 & 7	Green
White	Black	6 & 7	Yellow
Black		6 & 7	Red
Blue	Black		Spare
Black	Red		Common White Tag
White			Common

**Install 1-16 conductor, No. 14 A.W.G. cable, to each pole.**

#### NOTES

1. A separate multiple-conductor (14AWG) cable shall be installed from the controller cabinet to each signal pole base in the intersection.
2. Each cable shall be identified with an indelibly marked plastic tag when it comes into the controller cabinet. The identification shall denote the final destination of each cable. (i.e. N.E., S.W., N.C. Island, S.C. Island).
3. No breaks or splices shall be made between the controller cabinet and the cables final destination, unless approved by the Engineer. Where possible, splices shall be in pole bases rather than pull-boxes, and shall be completely encapsulated in scotch-cast or other similar encapsulant.
4. Splices at the final destination shall not be encapsulated.
5. At each pole, a separate 5-conductor cable shall be installed from each two or three-section signal head assembly to the signal pole base. A seven conductor cable shall be installed from a five-section signal head assembly to the signal pole base.
6. Each signal pole assembly shall be wired in accordance with the appropriate signal wiring code outline.
7. A 7-conductor cable shall be installed from a center island or otherwise isolated pedestal pole to the nearest mast arm pole base. At the mast arm pole base, the wiring from the pedestal pole shall be spliced into the 16-conductor in accordance with the normal wiring code.

#### COMMON CABLE

WIRE COLOR	FUNCTION
Red	Transmit
Blue	Transmit
Green	Receive
White	Receive
Orange	Spares
White	Spares
Grey	Spares
White	Spares
Blue	Spares
White	Spares
Brown	Spares
White	Spares

## EROSION CONTROL

Subsection 807.02 in the 1997 English Edition of the Standard Specifications is amended to include the following:

	Minimum Purity (%)	Application rate in lb. of Pure Live Seed/1000 yd. <sup>2</sup>
Perennial Ryegrass – Linn	85	4
K-31 Fescue	85	25
Sheeps Fescue	85	5
Buffalograss – Sharps 2, Cody	80	5
Blue Grama – NE, KS, CO	35	3
Birdsfoot Trefoil – Empire – 5X Inoculation	90	4
Oats	90	6

All seeds shall be origin Nebraska, adjoining states, or as specified. A contractor proposing to use a substitute variety or origin shall submit for the engineers consideration a seed tag representing the seed, which shows the variety, origin and analysis of the seed.

Rate of application of inorganic fertilizer shall be:

	Rate of Application Per 1000 yd. <sup>2</sup> (Min.)
Available Nitrogen (N <sub>2</sub> ) -----	8 or 9 lb.
Available Phosphoric Acid (P <sub>2</sub> O <sub>5</sub> ) -----	23 or 24 lb.

Rate of application of granular sulphur coated urea fertilizer or urea-formaldehyde fertilizer shall be:

	Rate of Application Per 1000 yd. <sup>2</sup> (Min.)
Nitrogen (Total Available) -----	18 lb.

## EROSION CONTROL (S8-14-0202)

Subsection 807.02 in the Supplemental Specifications is void.

Paragraph 6.b. of Subsection 807.03 in the Standard Specifications is amended to include the following:

The soil retention blanket for Erosion Control Type B, Type B-1, and Type B-2 shall be placed longitudinally next to the shoulder of the roadway. The soil retention blanket shall be placed after the area is seeded and before the area is mulched. One-third more staples are required than shown in the plans.



**47B CONCRETE PAVEMENTS AND  
47BD CONCRETE FOR BRIDGES  
(S10-4-0302)**

**General**

Section 1002 in the 1997 Standard Specifications and Supplemental Specifications is amended to include the following:

For the purpose of this Special Provision, Type IPN shall mean Type IP cement made with 15 to 25 percent natural pozzolan and Type IPF shall mean Type IP cement made with 15 to 25 percent Class F fly ash. All cements must conform to the requirements of Section 1004 in the 1997 Standard Specifications and Supplemental Specifications.

**47BD Concrete for Bridges and Barriers**

The 47BD concrete used in bridge decks, approach slabs, bridge rails, and barriers shall be proportioned using one of the alternates shown in Table I.

TABLE I (ENGLISH)  
CLASS 47BD CONCRETE PROPORTIONS

Alt.	Cement Type	Pounds of Cement per Cu.Yd.	Pounds of Class F Fly Ash	Air Content Percent		Pounds of Total Agg. per Cu.Yd.		Ratio of Total Agg. Percent	Type of Coarse Agg.
				Min.	Max.	Min.	Max.		
1	I or II	590	130 Min.	5.0	7.5	2530	2950	30±3	Limestone
2	IPN	658	0*	5.0	7.5	2530	2950	30±3	Limestone
3	IPF	658	0**	5.0	7.5	2530	2950	30±3	Limestone
4	I or II	658***	0***	5.0	7.5	2530	2950	30±3	Limestone

TABLE I (METRIC)  
CLASS 47BD CONCRETE PROPORTIONS

Alt.	Cement Type	Kg of Cement per Cu. Meter	Kg of Class F Fly Ash	Air Content Percent		Kg of Total Agg. per Cu.Meter		Ratio of Total Agg. Percent	Type of Coarse Agg.
				Min.	Max.	Min.	Max.		
1	I or II	350	77 Min.	5.0	7.5	1500	1750	30±3	Limestone
2	IPN	390	0*	5.0	7.5	1500	1750	30±3	Limestone
3	IPF	390	0**	5.0	7.5	1500	1750	30±3	Limestone
4	I or II	390***	0***	5.0	7.5	1500	1750	30±3	Limestone

\* Class C or F fly ash may be substituted in the mix design provided the total pozzolan content does not exceed 25 percent. The mix may be modified by substituting an amount of fly ash equal to the weight of cement removed.

\*\* No additional fly ash substitution is allowed.

\*\*\* Total alkali content shall not exceed 3 lbs./yd.<sup>3</sup> (1.8 Kg/m<sup>3</sup>)

Water reducing and set retarding admixtures shall be used in accordance with the manufacturer's recommendations of dosage rates.

#### 47B Concrete Pavements

The 47B concrete used in concrete pavements shall be proportioned using one of the alternates shown in Table II.

TABLE II (ENGLISH)  
CLASS 47B CONCRETE PAVEMENT PROPORTIONS

Alt.	Cement Type	Pounds of Cement per Cu.Yd.	Pounds of Class F Fly Ash	Air Content Percent		Pounds of Total Agg. per Cu.Yd.		Ratio of Total Agg. Percent	Type of Coarse Agg.
				Min.	Max.	Min.	Max.		
1	I or II	510	110 Min.	5.0	7.5	2876	3130	30±3	Limestone
2	IPN	564*	0*	5.0	7.5	2876	3130	30±3	Limestone
3	IPF	564**	0**	5.0	7.5	2876	3130	30±3	Limestone
4	I or II	564***	0***	5.0	7.5	2876	3130	30±3	Limestone

TABLE II (METRIC)  
CLASS 47B CONCRETE PAVEMENT PROPORTIONS

Alt.	Cement Type	Kg of Cement per Cu. Meter	Kg of Class F Fly Ash	Air Content Percent		Kg of Total Agg. per Cu.Meter		Ratio of Total Agg. Percent	Type of Coarse Agg.
				Min.	Max.	Min.	Max.		
1	I or II	303	65 Min.	5.0	7.5	1706	1857	30±3	Limestone
2	IPN	335*	0*	5.0	7.5	1706	1857	30±3	Limestone
3	IPF	335**	0**	5.0	7.5	1706	1857	30±3	Limestone
4	I or II	335***	0***	5.0	7.5	1706	1857	30±3	Limestone

\* Class C or F fly ash may be substituted in the mix design provided the total pozzolan content does not exceed 25 percent. The mix may be modified by substituting an amount of fly ash equal to the weight of cement removed.

\*\* No additional fly ash substitution is allowed.

\*\*\* Total alkali content shall not exceed 3 lbs./yd.<sup>3</sup> (1.8 Kg/m<sup>3</sup>)

Water reducing admixtures shall be used in accordance with the manufacturer's recommendations of dosage rates.

**FLY ASH  
(S10-5-0801)**

Subsection 1008.01 in the Standard Specifications is void and superseded by the following:

Fly ash shall be Class C or F meeting the requirements of ASTM C 618.

**STRUCTURAL STEEL  
(S10-5-0801)**

Section 1045 of the Standard Specifications is amended to include the following:

1045.03 -- Steel Plate Substitution

The Contractor may use either English or Metric steel plates in accordance with Table 1045.01.

<b>Table 1045.01</b>			
<b>English-Metric Steel Plate Substitution Table</b>			
<b>Metric (millimeters)</b>	<b>English (inches)</b>	<b>Metric (millimeters)</b>	<b>English (inches)</b>
9	3/8	32	1 1/4
10	3/8	35	1 3/8
11	7/16	38	1 1/2
12	1/2	40	1 5/8
14	9/16	45	1 3/4
16	11/16	50	2
18	3/4	55	2 1/4
20	13/16	60	2 3/8
22	7/8	70	2 3/4
25	1	80	3 1/4
28	1 1/8	90	3 1/2
30	1 1/4		

**REPAIR OF DAMAGED METALLIC COATINGS  
(S10-5-0801)**

Paragraph 2. of Subsection 1061.01 in the Standard Specifications is void and superseded by the following:

2. The material used for repair shall provide a minimum coating thickness of at least 50 µm with one application.

**DOWEL BARS  
(S10-5-0801)**

Subsection 1022.02 in the Standard Specifications is amended to include the following:

In addition to these certificates, two 1.8 meter samples of the coated bar (for tension testing and bend testing) of each size bar and each heat number shall be sent to the NDR Materials and Research Laboratory, Lincoln, Nebraska. These bars will be properly identified with tags showing the size and heat number.

**CORRUGATED METAL PIPE  
(S10-5-0801)**

Table 1035.01 in Section 1035 of the Supplemental Specifications is amended by deleting the title "Steel and Aluminum Culvert Thickness".

**METAL FLARED-END SECTIONS  
(S10-5-0801)**

Table 1036.01 in Section 1036 of the Supplemental Specifications is amended by deleting the title "Steel and Aluminum Flared-End Thickness".

**REINFORCED CONCRETE PIPE, MANHOLE RISERS,  
AND FLARED-END SECTIONS  
(S10-5-0801)**

Paragraph 3.a. of Subsection 1037.02 in the Supplemental Specifications is void and superseded by the following:

3.a. Round reinforced concrete pipe shall conform to the requirements of AASHTO M 170-95 with the exception of the minimum circumferential reinforcing (in<sup>2</sup>/ft. (mm<sup>2</sup>/m) of pipe wall) for 15, 21, and 24 inch (380, 460, 600 mm) Class III pipe, as shown below:

Paragraph 3.b. of Subsection 1037.02 is void and superseded by the following:

b. AASHTO M 170-95 Specifications are modified as follows:

Paragraph 4. of Subsection 1037.02 is void and superseded by the following:

4. Reinforced concrete arch pipe shall conform to the requirements of AASHTO M 206-95.

Paragraph 5. of Subsection 1037.02 is void and superseded by the following:

5. Reinforced concrete elliptical pipe shall conform to the requirements of AASHTO M 207-95.

Paragraph 7. of Subsection 1037.02 is void and superseded by the following:

7. Concrete flared-end sections shall be of the design shown in the plans and in conformance with the applicable requirements of AASHTO M 170-95, Class II pipe, AASHTO M 206-95, Class A-II pipe, or AASHTO M 207-95, Class HE-II pipe for the diameter of pipe which it is to be installed.

### **HIGH TENSILE BOLTS, NUTS, AND WASHERS (S10-5-1001)**

Subsection 1058.02 in the Supplemental Specifications is void.

Paragraph 4.b.(5) in the Standard Specifications is void and superseded by the following:

- (5) The bolt, nut, and washer assembly shall be assembled in a Skidmore-Wilhelm calibrator or an acceptable equivalent device. For bolts that are too short to be assembled in the calibrator, see Subsection 1058.03, Paragraph 4.b.(9).

### **ELASTOMERIC BEARINGS AND LAMINATED BEARING PADS (S10-5-0202)**

Paragraph 2. of Subsection 1068.02 in the Standard Specifications is void and superseded by the following:

2. Certification shall be furnished in accordance with NDR's *Materials Sampling Guide*.

Paragraph 3. of Subsection 1068.02 is void.

## **STEEL BARS FOR CONCRETE REINFORCEMENT (S10-5-1201)**

Section 1020 in the Standard Specifications is void and superseded by the following:

### 1020.01 - Description

Steel tie bars for longitudinal joint reinforcement in concrete pavements shall be epoxy coated and deformed Grade 40 or 60 billet steel as shown in the plans, specifications or Special Provisions.

### 1020.02 - Material Characteristics

1. Billet-steel bars shall conform to the requirements of ASTM A 615/A 615M.
2. Epoxy coatings shall conform to the requirements in Section 1021 of the Standard Specifications and Supplemental Specifications.

### 1020.03 - Acceptance Requirements

Acceptance shall be based on sampling, testing, and certification requirements in accordance with the NDR *Materials Sampling Guide*.

## **PROPOSAL GUARANTY (S1-38-0801)**

As an evidence of good faith in submitting a proposal for this work or for any portion thereof as provided in the proposal form, the bidder must file with his proposal a bid bond, which must be executed on the Department of Roads' Bid Bond form, in the amount of 5 percent of the amount bid for any group of items or collection of groups for which the bid is submitted. Any alterations, conditions or limitations added to the Department of Roads' Bid Bond form will be unacceptable and cause the bid not to be opened and read.

\* \* \* \* \*

F05INFMAY02

47B CONCRETE PAVEMENTS AND 47BD CONCRETE FOR BRIDGES.....	49
AGGREGATE FOUNDATION COURSE-D.....	31
CERTIFICATION FOR FEDERAL -AID CONTRACTS.....	25
CONSTRUCTION DETAILS .....	28
CONTROL OF WORK.....	27
CORRUGATED METAL PIPE .....	52
DISADVANTAGED BUSINESS ENTERPRISES.....	24
DOWEL BARS.....	52
ELASTOMERIC BEARINGS AND LAMINATED BEARING PADS.....	53
EROSION CONTROL.....	48
EXCAVATION (ESTABLISHED QUANTITY) .....	31
FLY ASH.....	51
FUEL COST ADJUSTMENT PAYMENT .....	28
GENERAL CLEARING AND GRUBBING.....	30
GENERAL CONDITIONS.....	24
HIGH TENSILE BOLTS, NUTS, AND WASHERS.....	53
LEGAL RELATIONS AND RESPONSIBILITY TO THE PUBLIC .....	27
LOCAL MATERIAL SOURCES.....	33
MEASUREMENT AND PAYMENT.....	28
METAL FLARED-END SECTIONS.....	52
PROPOSAL GUARANTY .....	54
REINFORCED CONCRETE PIPE, MANHOLE RISERS, AND FLARED-END SECTIONS.....	52
REMOVE LIGHTING UNIT.....	30
REMOVE MAST ARM SIGNAL POLE.....	30
REPAIR OF DAMAGED METALLIC COATINGS.....	52
SERVICE DISCONNECT PEDESTAL .....	34
STATUS OF RIGHT-OF-WAY .....	26
STATUS OF UTILITIES.....	26
STEEL BARS FOR CONCRETE REINFORCEMENT .....	54
STRUCTURAL STEEL.....	51
SUBCONTRACTOR BIDDERS LIST INFORMATION .....	26
SUBGRADE PREPARATION.....	31
TEMPORARY TRAFFIC CONTROL DEVICES.....	33
TEMPORARY TRAFFIC SIGNAL .....	33